

# Surge Information Management Support (SIMS)

Paul Knight, Rachel Yales, Maarten van der Veen



The Netherlands  
Red Cross



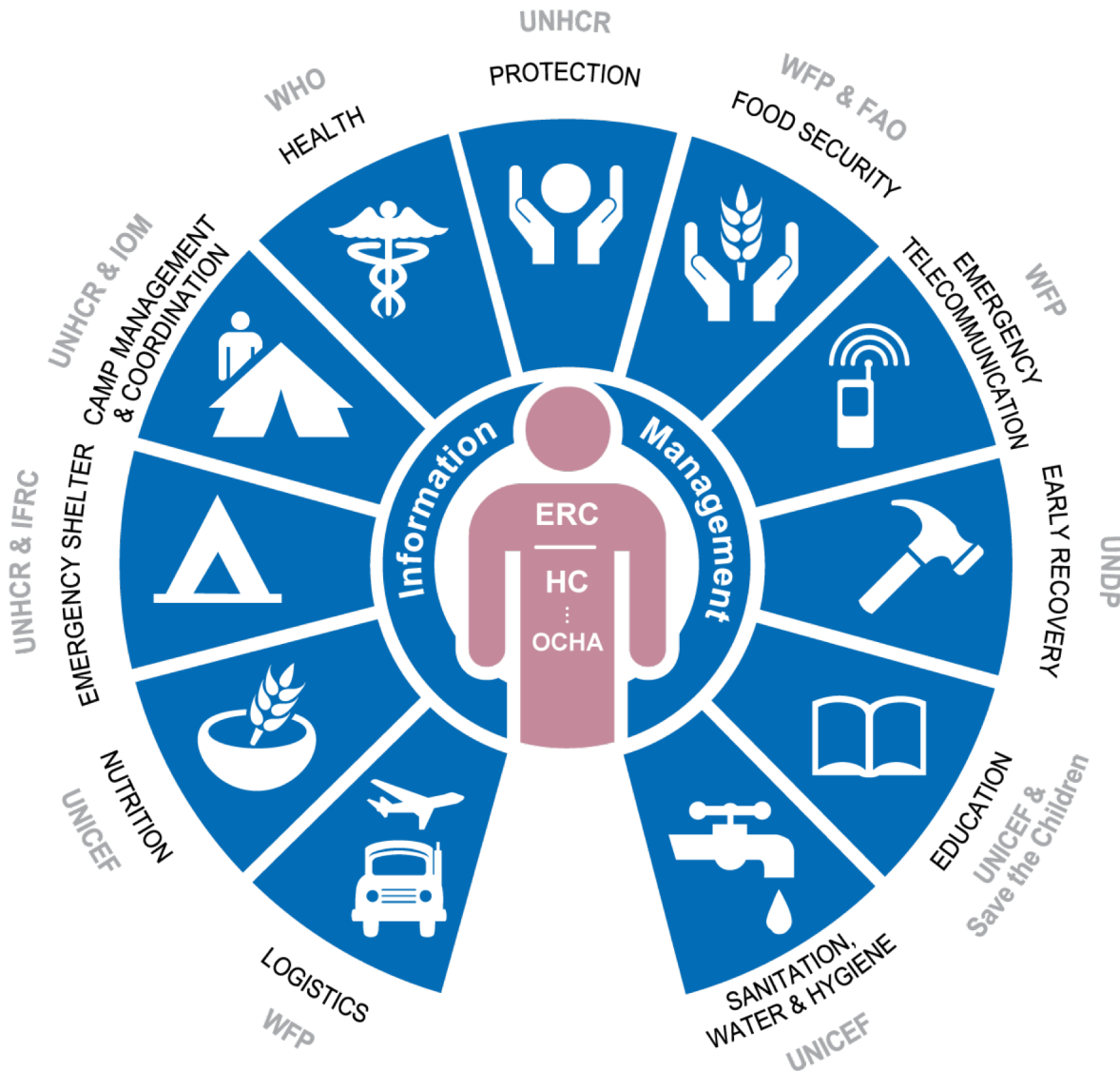
International Federation of Red Cross and Red Crescent Societies  
Fédération internationale des Sociétés de la Croix-Rouge et du Croissant-Rouge  
Federación Internacional de Sociedades de la Cruz Roja y de la Media Luna Roja  
الاتحاد الدولي لجمعيات الصليب الأحمر والهلال الأحمر



# Agenda

- Introduction
- Humanitarian disaster response
- Red Cross in humanitarian response
- What is SIMS
- Life cycle of a SIMS activation
- Lunch
- SIMS tools and resources
- SIMSulation
- Wrap up and evaluation





## Cluster members

- UN agencies
- Host government (national, regional, local)
- International NGOs
- Red Cross Red Crescent Movement
- Local NGOs / Civil Society Organizations
- Representatives of the Affected Population
- Donors
- Academia



International Federation of Red Cross and Red Crescent Societies  
 Fédération internationale des Sociétés de la Croix-Rouge et du Croissant-Rouge  
 Federación Internacional de Sociedades de la Cruz Roja y de la Media Luna Roja  
 الاتحاد الدولي لجمعيات الصليب الأحمر والهلال الأحمر





**Shelter Cluster**



International Federation of Red Cross and Red Crescent Societies  
Fédération internationale des Sociétés de la Croix-Rouge et du Croissant-Rouge  
Federación Internacional de Sociedades de la Cruz Roja y de la Media Luna Roja  
الاتحاد الدولي لجمعيات الصليب الأحمر والهلال الأحمر

DATA PLAYBOOK: SLIDEDECK 15



# Currently active Shelter Clusters or cluster-like mechanisms

This dashboard provides a summary of the coordination mechanisms currently in place, more detailed information can be found on the country-level pages for each response (links will show when hovering over a country).

By year

2015

2016

25

Active clusters

459

Cluster partners

\$105M

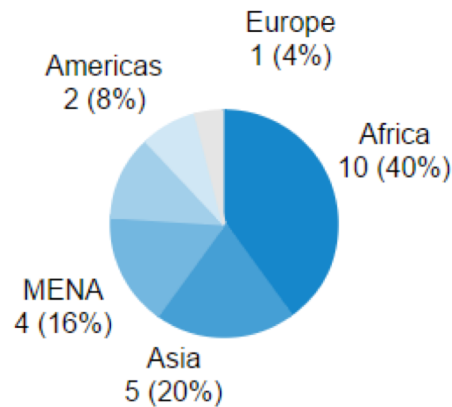
Funding received

3,3M

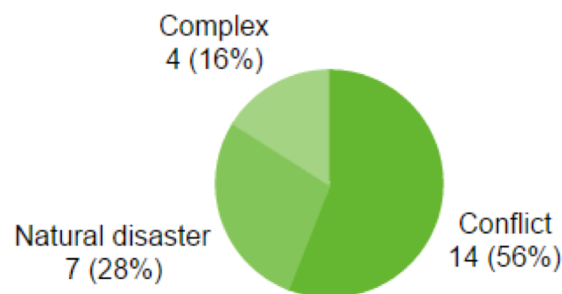
Number of people supported\*

\* To avoid overlap, this is based on the highest number of beneficiaries for either NFI or shelter per country

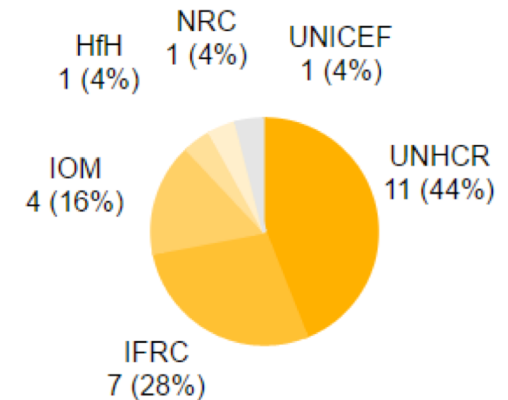
## By region



## By type of crisis



## By lead agency



International Federation of Red Cross and Red Crescent Societies  
Fédération internationale des Sociétés de la Croix-Rouge et du Croissant-Rouge  
Federación Internacional de Sociedades de la Cruz Roja y de la Media Luna Roja  
الاتحاد الدولي لجمعيات الصليب الأحمر والهلال الأحمر



# Shelter cluster information management



International Federation of Red Cross and Red Crescent Societies  
Fédération internationale des Sociétés de la Croix-Rouge et du Croissant-Rouge  
Federación Internacional de Sociedades de la Cruz Roja y de la Media Luna Roja  
الاتحاد الدولي لجمعيات الصليب الأحمر والهلال الأحمر

DATA PLAYBOOK: SLIDEDECK 15



## Red Cross in the humanitarian response

Frido Herinckx

Head of the Disaster response unit

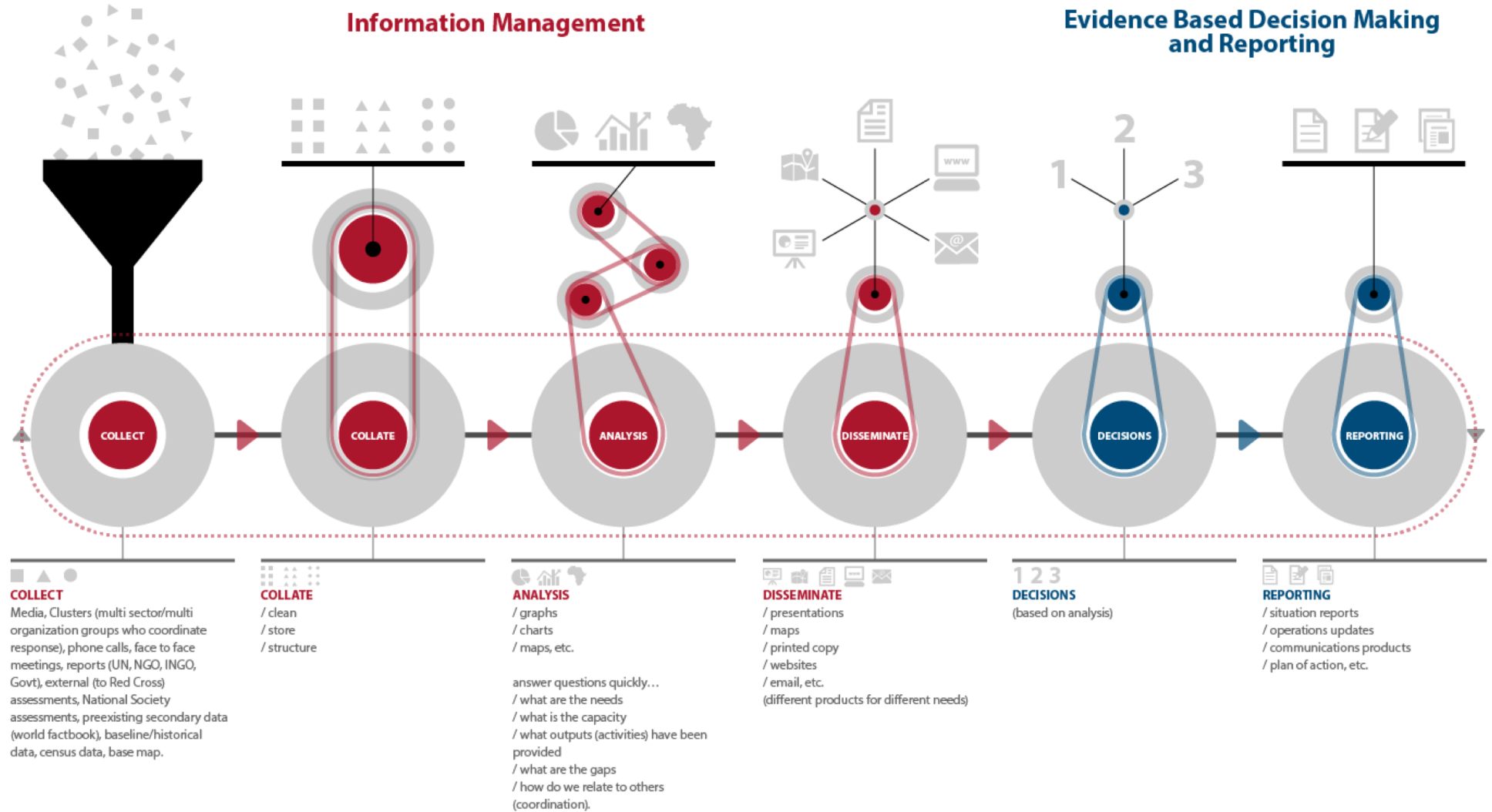
# Information management in disasters



International Federation of Red Cross and Red Crescent Societies  
Fédération internationale des Sociétés de la Croix-Rouge et du Croissant-Rouge  
Federación Internacional de Sociedades de la Cruz Roja y de la Media Luna Roja  
الاتحاد الدولي لجمعيات الصليب الأحمر والهلال الأحمر

DATA PLAYBOOK: SLIDEDeck 15

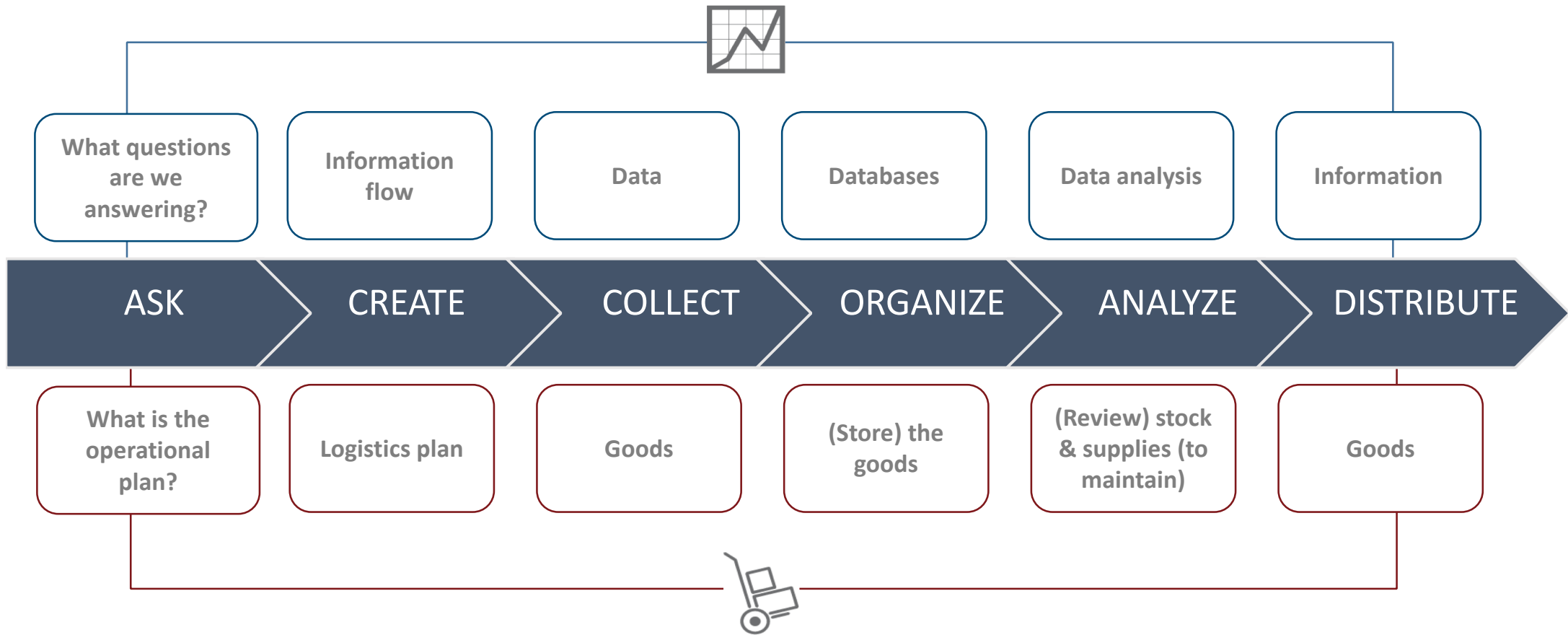
# Disaster Information Cycle



International Federation of Red Cross and Red Crescent Societies  
 Fédération internationale des Sociétés de la Croix-Rouge et du Croissant-Rouge  
 Federación Internacional de Sociedades de la Cruz Roja y de la Media Luna Roja  
 الاتحاد الدولي لجمعيات الصليب الأحمر والهلال الأحمر



# IM is to information as logistics is to goods:



# Surge Information Management Support (SIMS)



International Federation of Red Cross and Red Crescent Societies  
Fédération internationale des Sociétés de la Croix-Rouge et du Croissant-Rouge  
Federación Internacional de Sociedades de la Cruz Roja y de la Media Luna Roja  
الاتحاد الدولي لجمعيات الصليب الأحمر والهلال الأحمر

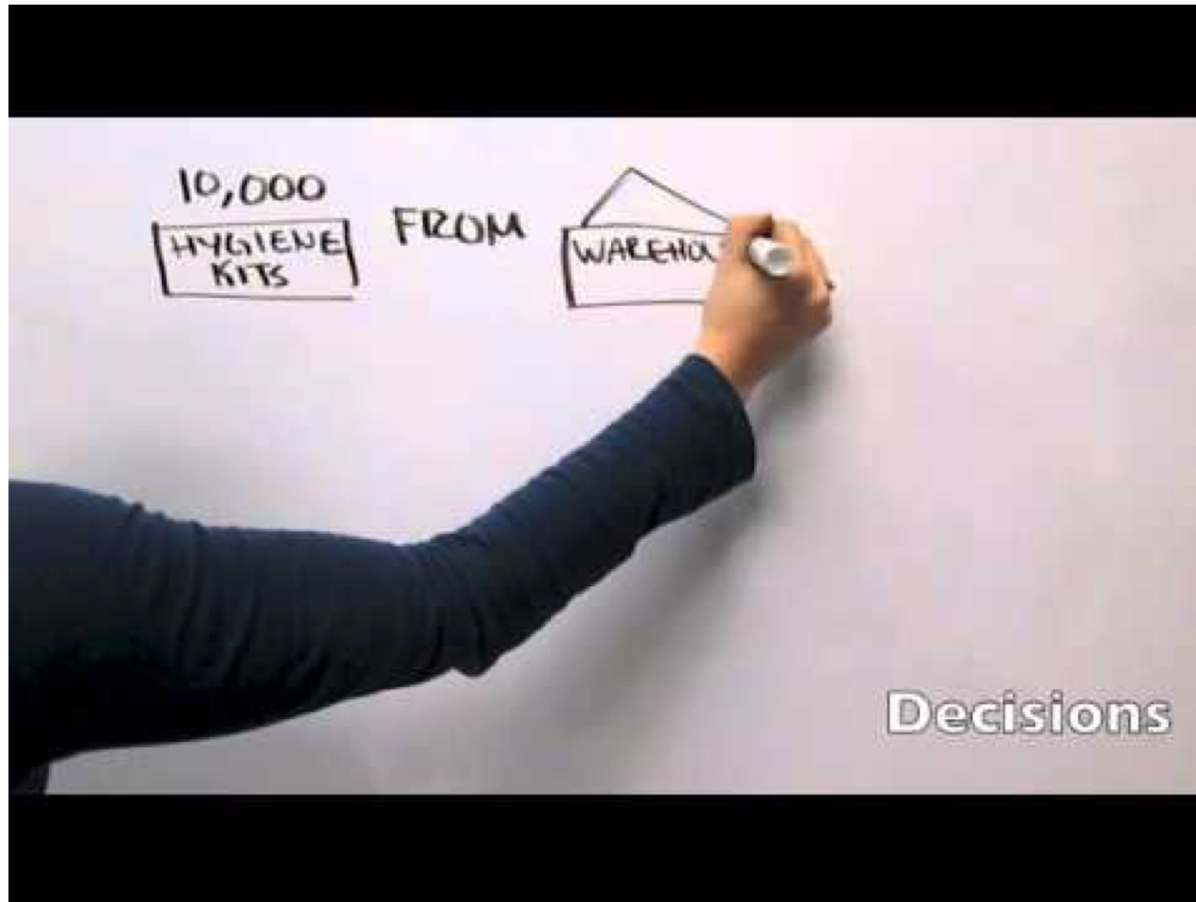
DATA PLAYBOOK: SLIDEDECK 15

# What is SIMS?

SIMS (Surge Information Management Support) is a mechanism through which information management services are provided to the FACT and ERUs in an emergency response.



# What is SIMS?



# SIMS activities



Coordination



Capacity Building



Response Operations



International Federation of Red Cross and Red Crescent Societies  
Fédération internationale des Sociétés de la Croix-Rouge et du Croissant-Rouge  
Federación Internacional de Sociedades de la Cruz Roja y de la Media Luna Roja  
الاتحاد الدولي لجمعيات الصليب الأحمر والهلال الأحمر

# How does SIMS currently work?

Network of IM/GIS specialists from the British and American Red Cross GIS teams

Activation at the request of a FACT Team Lead through:

- The Region Office
- IFRC DCM Surge Desk



International Federation  
of Red Cross and Red Crescent Societies



**American  
Red Cross**



**BritishRedCross**

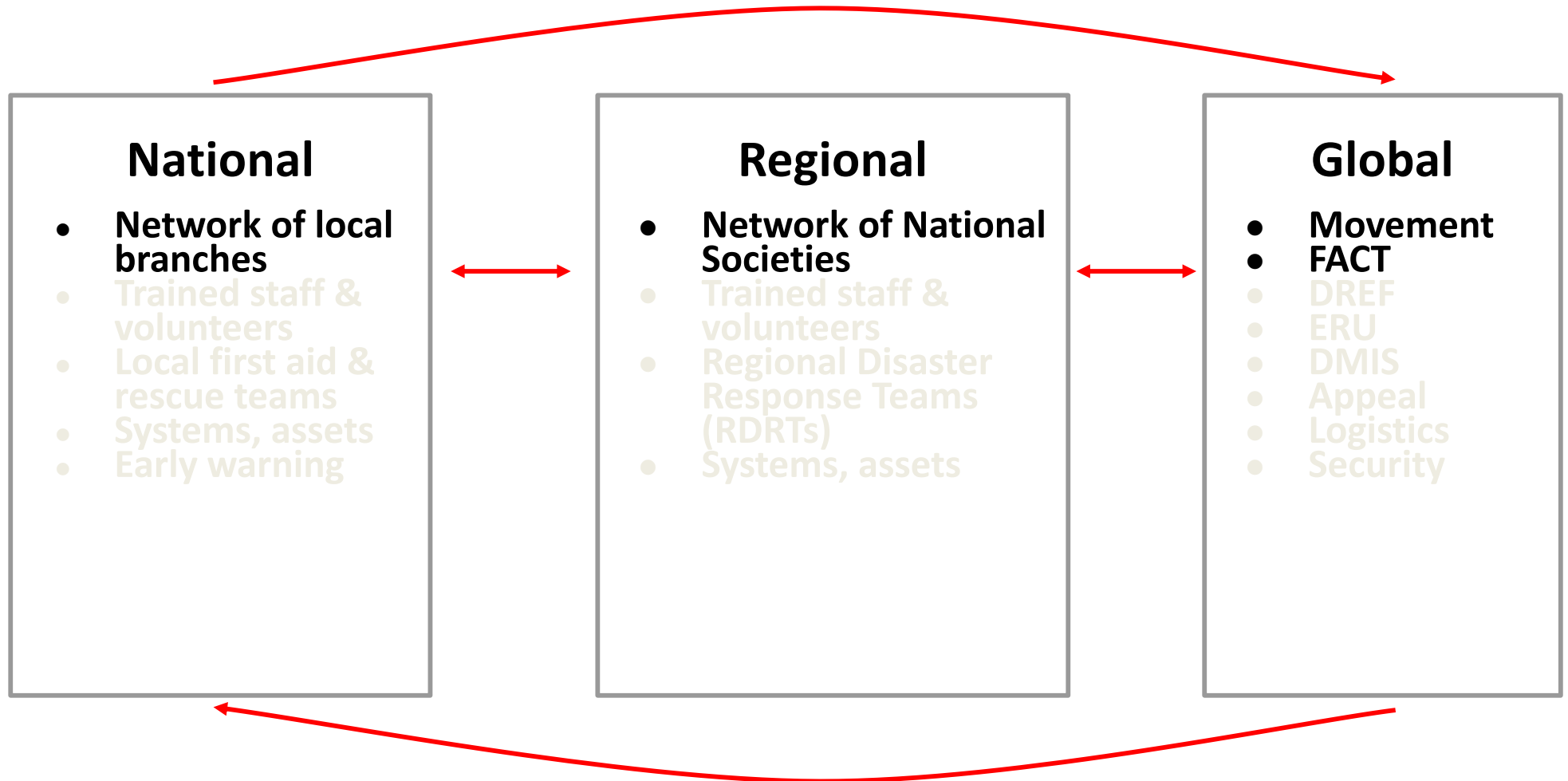


The Netherlands  
Red Cross



International Federation of Red Cross and Red Crescent Societies  
Fédération internationale des Sociétés de la Croix-Rouge et du Croissant-Rouge  
Federación Internacional de Sociedades de la Cruz Roja y de la Media Luna Roja  
الاتحاد الدولي لجمعيات الصليب الأحمر والهلال الأحمر

# Organisational chart





## Remote support



## Deployed



International Federation of Red Cross and Red Crescent Societies  
Fédération internationale des Sociétés de la Croix-Rouge et du Croissant-Rouge  
Federación Internacional de Sociedades de la Cruz Roja y de la Media Luna Roja  
الاتحاد الدولي لجمعيات الصليب الأحمر والهلال الأحمر



# Remote Support Roles

## SIMS Coordinator

- Works with operations leadership to determine appropriate level/type of support
- Identifies available human resources within the SIMS network
- Determines operation-specific roles & responsibilities
- Sets up and maintains coordination in SIMS team throughout operation
- Reviews and evaluates the provided support with the operations team, adjusting as needed

# Remote Support Roles

---

## GIS Specialist

- Briefing Pack maps
- Maps for the operation
- Data management
- Coordination
- Data visualisation

## IM Specialist

- Briefing pack
- Secondary data
- Spreadsheets
- Data management
- Coordination

# Deployed Roles

---

## FACT (1<sup>st</sup>/2<sup>nd</sup> Round)

- Field work
- All IM for FACT
- Support reporting

## Technical IM Specialist

- All IM for technical teams (Cash, Relief)

- Template/tool management
- Mobile data collection
- Capacity building
- Analysis, prototyping, modeling

# Activation Flow

Activation



Response



Transition



Disaster



Surge Team Alert



Request for SIMS



SIMS Activated



Coordinator Assigned



Establish Level of Support



Hire Delegate



Continued Remote





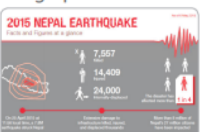


Close Out



International Federation of Red Cross and Red Crescent Societies  
Fédération internationale des Sociétés de la Croix-Rouge et du Croissant-Rouge  
Federación Internacional de Sociedades de la Cruz Roja y de la Media Luna Roja  
الاتحاد الدولي لجمعيات الصليب الأحمر والهلال الأحمر

# What support is provided?

SIMS Products	Description & Purpose	Opportunities
<b>Base Maps</b> 	<p>Detailed maps of the disaster area which help teams visualize the environment and put the response in geographic context.</p> <p><b>Example:</b> <a href="#">Koidu, Sierra Leone (Dec 2014)</a></p>	<p>Planning prior to deployment and familiarization with context.</p> <p>Ability to see individual communities for logistics planning.</p> <p>Ability to print and take on site visits as a tool for drawing.</p>
<b>Thematic Maps</b> 	<p>Maps of the disaster area with information from various sources overlaid to support both situational analysis and decision-making.</p> <p><b>Example:</b> <a href="#">Greece (Dec 2015)</a></p>	<p>Analyze data from different sources.</p> <p>Visualize projections to plan for resource allocation.</p> <p>Planning for and reporting on relief distributions.</p> <p>Provide leadership with visual of needs and response plans.</p>
<b>Interactive Web Maps</b> 	<p>Online maps that offer the ability to manipulate layers and leverage different sets of data quickly in real time.</p> <p><b>Example:</b> <a href="#">Vanuatu (Apr 2015)</a></p>	<p>Coordinate response activities by different global ERUs.</p> <p>Provide holistic view of response activities across the Movement and analyze outstanding gaps in response.</p>
<b>Dashboards</b> 	<p>Interactive visualisation of key indicators which aid understanding of the situation and progression of the response.</p> <p><b>Example:</b> <a href="#">Ethiopia Drought (Nov 2015)</a></p>	<p>Analysis tool for evaluating progress towards meeting the needs in a response.</p> <p>Communicate the strategic priorities of a response and the actions by sector.</p>
<b>Infographics</b> 	<p>Graphic representation of data for easy understanding on an ad hoc basis.</p> <p><b>Example:</b> <a href="#">Nepal Earthquake (May 2015)</a></p>	<p>Visualize aspects of response such as event timeline and regional profile.</p> <p>Visualize plan of action.</p> <p>Communications and reporting tool useful for fundraising and reporting on response activities.</p>

December 2015

Source: IFRC Disaster Crisis Management Unit

## Secondary Data Collection



Datasets are compiled through research from secondary sources and then packaged for responders.

**Example:** [Liberia \(Jan 2015\)](#)

Planning prior to deployment and familiarization of context.  
Context and situational awareness for responders.

## Data Analysis



Statistical trend analysis is conducted by IM specialist with graphs, maps or data tables produced to support decision-making.

**Example:** [Sierra Leone \(Oct 2014\)](#)

Real time support to operations to enhance data-driven decisions.  
Visualization of reporting data for easy consumption.

## Data Management

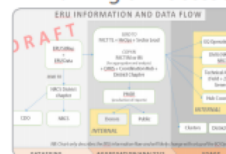


Remote or deployed specialist in IM supports the response team with collecting, collating and sharing data for operations.

**Example:** [Philippines \(Jan 2014\)](#)

Getting data into a useable format.  
Improved coordination and reporting in response.  
Enhancing coordination with external agencies and partners.

## IM Training & Processes



IM specialist in the field supports staff to improve the IM and sets up relevant processes and systems, particularly during a response.

**Example:** [Nepal Earthquake \(Aug 2015\)](#)

Training for local staff and volunteers as well as response delegates from the IFRC.  
Improved data management during the operation.  
Enhanced data driven decision-making.

## Mobile Data Collection

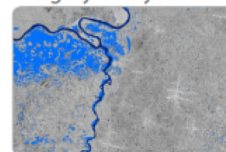


Survey training provided on how to support data collection in the field using mobile tools.

**Example:** [Philippines \(Apr 2014\)](#)

Getting data into a useable format.  
Rapid data collection and improved accuracy in primary data.

## Imagery Analysis



Overview of terrain produced with satellite imagery.

**Example:** [Balkan Floods \(May 2014\)](#)

Support from online community through crowd-sourcing.  
Rapid initial assessments of disaster impact or extent.

Source: IFRC Disaster Crisis Management Unit



International Federation of Red Cross and Red Crescent Societies  
Fédération internationale des Sociétés de la Croix-Rouge et du Croissant-Rouge  
Federación Internacional de Sociedades de la Cruz Roja y de la Media Luna Roja  
الاتحاد الدولي لجمعيات الصليب الأحمر والهلال الأحمر

# What support is provided? - Activity

## SIMS Cookbook (still in development)

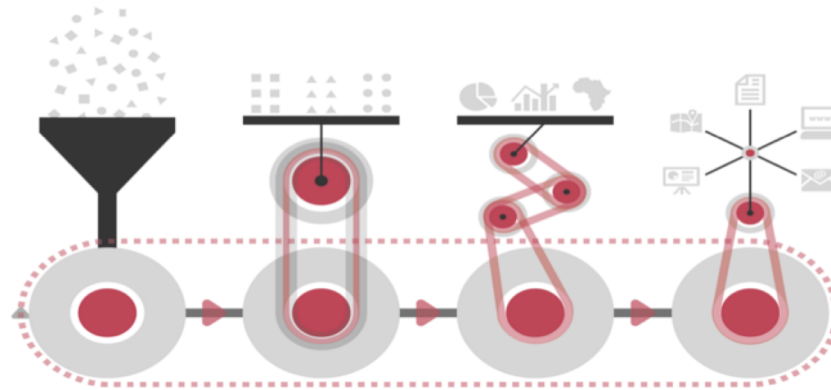
This is a document that will be handed to the FACT team lead to assist in their engagement with SIMS.

There are many blank spaces in the document. In small groups or pairs, try and fill in the gaps. You would have not seen this document before. What ideas do you have?

We will then go through this as a group.

# Walkthrough

## Product Cookbook



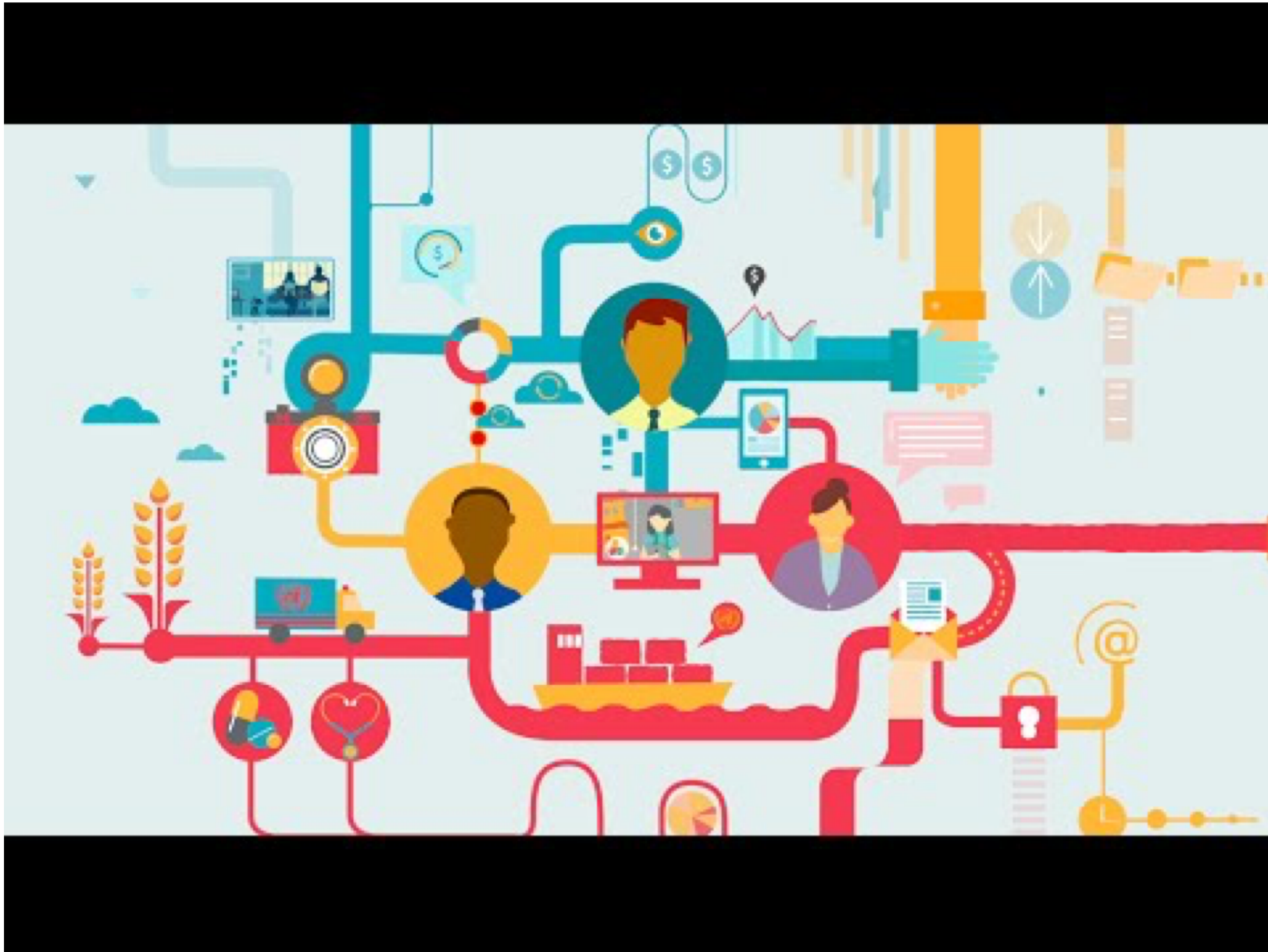
Products by **SIMS**. Supported by the American Red Cross and British Red Cross.

Press right on your keyboard or swipe right to navigate.



International Federation of Red Cross and Red Crescent Societies  
Fédération internationale des Sociétés de la Croix-Rouge et du Croissant-Rouge  
Federación Internacional de Sociedades de la Cruz Roja y de la Media Luna Roja  
الاتحاد الدولي لجمعيات الصليب الأحمر والهلال الأحمر

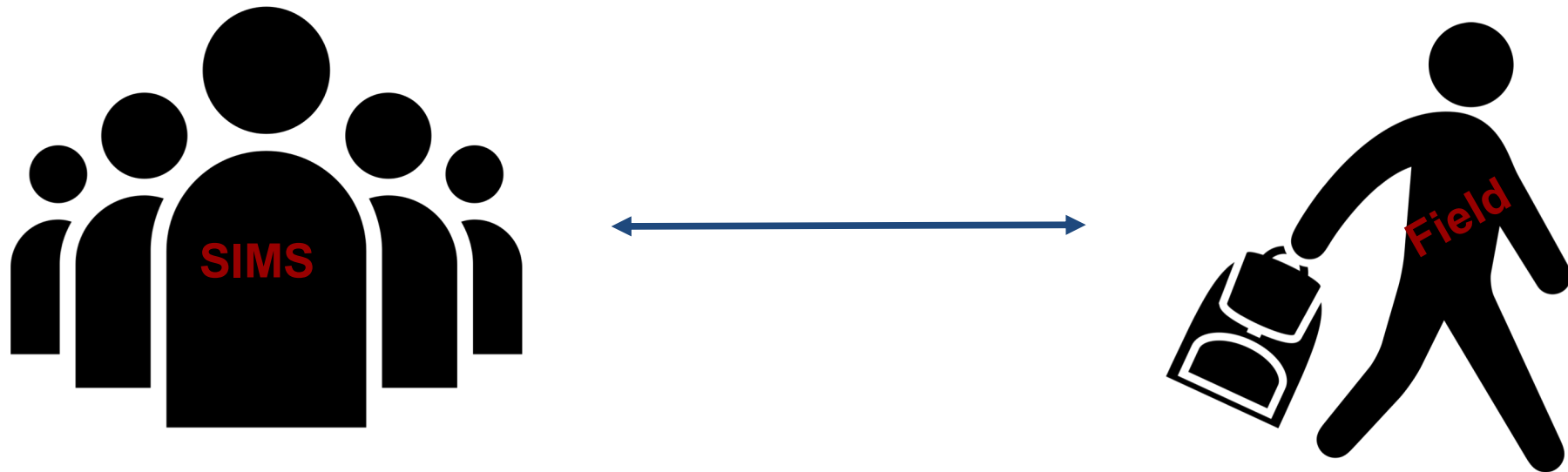






# Factors for SIMS success

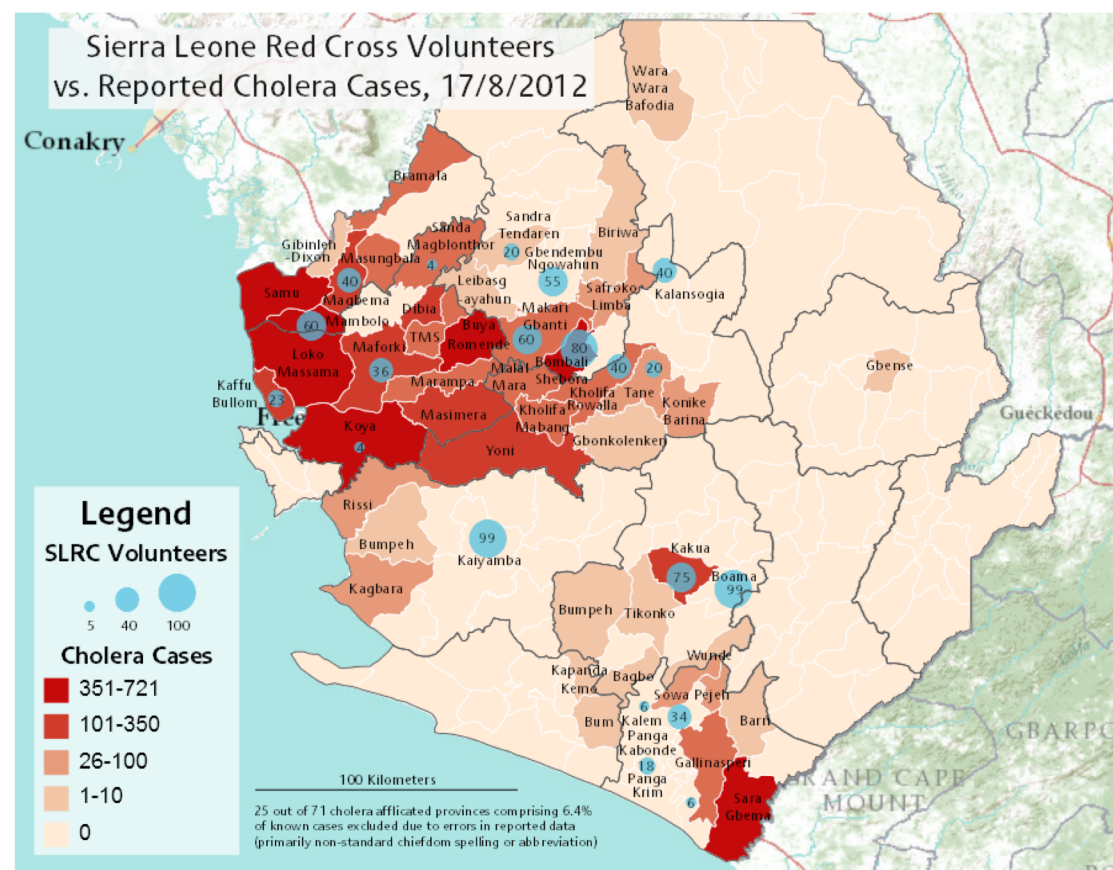
## Discussion



Information Management comes first!

Good IM leads to effective use of Geographic Information Systems (GIS) in response

	A	B	C	D	E	F	G	H	I	J
1	District	Chiefdom	Cases	Date		Cases	Date		Cases	Date
2	Bo	Bagbo		23/6/2012			23/7/2012		2	23/8/2012
3	Bo	Bumpeh		23/6/2012			23/7/2012		3	23/8/2012
4	Bo	Kakua	0	23/6/2012		16	23/7/2012		219	23/8/2012
5	Bo	Tikonko		23/6/2012			23/7/2012		3	23/8/2012
6	Bo	Wunde		23/6/2012			23/7/2012		3	23/8/2012
7	Bo	Boama		23/6/2012			23/7/2012		1	23/8/2012
8	Bombali	Biriwa		23/6/2012			23/7/2012		1	23/8/2012
9	Bombali	Bombali Shebora		23/6/2012		4	23/7/2012		586	23/8/2012
10	Bombali	Gbendembu Ngawahun		23/6/2012			23/7/2012		17	23/8/2012
11	Bombali	Gibanti Kamaranka		23/6/2012			23/7/2012		4	23/8/2012
12	Bombali	Leibasgayahun		23/6/2012			23/7/2012		1	23/8/2012
13	Bombali	Makari Gbanti		23/6/2012			23/7/2012		51	23/8/2012
14	Bombali	Safroko Limba		23/6/2012		1	23/7/2012		16	23/8/2012
15	Bombali	Sandra Tendaren		23/6/2012			23/7/2012		5	23/8/2012
16	Bombali	Kpakie Massabom		23/6/2012			23/7/2012		1	23/8/2012
17	Bombali	Sanda Loko		23/6/2012			23/7/2012		2	23/8/2012
18	Bombali	(blank)		23/6/2012			23/7/2012		8	23/8/2012
19	Bonthe	Benducha		23/6/2012			23/7/2012		23	23/8/2012
20	Bonthe	Bum		23/6/2012			23/7/2012		6	23/8/2012
21	Bonthe	Dema		23/6/2012			23/7/2012			23/8/2012
22	Bonthe	Imperi		23/6/2012			23/7/2012		5	23/8/2012
23	Bonthe	Jong		23/6/2012			23/7/2012		23	23/8/2012
24	Bonthe	Kapanda Kemo		23/6/2012			23/7/2012		12	23/8/2012
25	Bonthe	Kwamebel Krim		23/6/2012			23/7/2012			23/8/2012
26	Bonthe	Nongoba Bullom		23/6/2012			23/7/2012		4	23/8/2012
27	Bonthe	Sittia		23/6/2012			23/7/2012		3	23/8/2012
28	Bonthe	Sogbini		23/6/2012			23/7/2012		9	23/8/2012
29	Bonthe	Yawbeko		23/6/2012			23/7/2012		2	23/8/2012
30	Kambia	Bramala	40	23/6/2012		46	23/7/2012		48	23/8/2012
31	Kambia	Gibinleh-Dixon		23/6/2012			23/7/2012		6	23/8/2012
32	Kambia	Magbema	236	23/6/2012		271	23/7/2012		341	23/8/2012
33	Kambia	Mambolo	253	23/6/2012		283	23/7/2012		372	23/8/2012
34	Kambia	Masungbala	21	23/6/2012		21	23/7/2012		34	23/8/2012
35	Kambia	Samu	336	23/6/2012		336	23/7/2012		419	23/8/2012
36	Kono	Gbense		23/6/2012			23/7/2012		4	23/8/2012
37	Kono	Goroma Kono		23/6/2012			23/7/2012		4	23/8/2012
38	Kono	Nimikoro		23/6/2012			23/7/2012		1	23/8/2012
39	Kono	Tankoro		23/6/2012			23/7/2012		1	23/8/2012
40	Moyamba	Bumpeh		23/6/2012			23/7/2012		16	23/8/2012
41	Moyamba	Kagbara		23/6/2012			23/7/2012		21	23/8/2012
42	Moyamba	Kaiyamba		23/6/2012			23/7/2012		5	23/8/2012



International Federation of Red Cross and Red Crescent Societies  
Fédération internationale des Sociétés de la Croix-Rouge et du Croissant-Rouge  
Federación Internacional de Sociedades de la Cruz Roja y de la Media Luna Roja  
الاتحاد الدولي لجمعيات الصليب الأحمر والهلال الأحمر

# Life cycle of a SIMS activation

# Example operations and how SIMS works

The screenshot displays the SIMS Nepal EQ 2015 - ACTIVATED dashboard, which is a Kanban-style task management system. The dashboard is organized into columns representing the workflow: Storage / Data, To Do - Backlog, Ongoing, Doing, Done - September 2015, Done - August 2015, and Done - July 2015. Each column contains task cards with titles, descriptions, progress bars, and assigned team members. The background of the dashboard features a photograph of a person holding a large metal pipe over a pile of rubble, likely from a destroyed building.

**Storage / Data**

- Painting religious figures
- Leaders vow to adjust provincial boundaries
- New Admin Boundaries
- \*Google Drive\* - SIMS - For Work in Progress, Templates and Ongoing tasks
- \*Dropbox\* - Shared with FACT -

**To Do - Backlog**

- Infographic detailing 15,000 rupees unconditional/conditional cash grant
- Map-making within an excel spreadsheet for Nepal to VDC/Muni level
- [P] \*\*\* INTERNAL - Response - Working Areas (District + VDC)
- PMER - Indicator tracking & M&E plan doc
- General Nepal info products

**Ongoing**

- Update mapfolio
- Reporting the the Cash Cluster
- Recovery Data Template -> Maps/Dash
- HIS Data for Dashboard
- \*\*INTERNAL - Movement Team Tracker map

**Doing**

- Shelter Cluster Gorkha
- Geocoding PyScript
- Create dropbox structure for recovery

**Done - September 2015**

- Nigel Ede - Recovery Map
- Bilateral BRC: Alastair Punch - Evaluation Summary Maps
- David Dalgardo - Shelter Cluster DEM map - Winterisation

**Done - August 2015**

- Cash Map - Marga
- District Level Data Template
- Emergency Health ERU - Reconstruction District Maps

**Done - July 2015**

- MSM GPS Points Simple - Nancy Kourduli
- Order Singati ERU a smartphone
- Powerpoint maps of affected districts - add to the movement email



International Federation of Red Cross and Red Crescent Societies  
Fédération internationale des Sociétés de la Croix-Rouge et du Croissant-Rouge  
Federación Internacional de Sociedades de la Cruz Roja y de la Media Luna Roja  
الاتحاد الدولي لجمعيات الصليب الأحمر والهلال الأحمر

# Collaboration



International Federation  
of Red Cross and Red Crescent Societies



**HDX**  
Humanitarian  
Data Exchange



Governments



Humanitarian **RESPONSE**



Google Drive



International Federation of Red Cross and Red Crescent Societies  
Fédération internationale des Sociétés de la Croix-Rouge et du Croissant-Rouge  
Federación Internacional de Sociedades de la Cruz Roja y de la Media Luna Roja  
الاتحاد الدولي لجمعيات الصليب الأحمر والهلال الأحمر

DATA PLAYBOOK: SLIDEDECK 15



# Ebola



International Federation of Red Cross and Red Crescent Societies  
Fédération internationale des Sociétés de la Croix-Rouge et du Croissant-Rouge  
Federación Internacional de Sociedades de la Cruz Roja y de la Media Luna Roja  
الاتحاد الدولي لجمعيات الصليب الأحمر والهلال الأحمر

DATA PLAYBOOK: SLIDEDeck 15







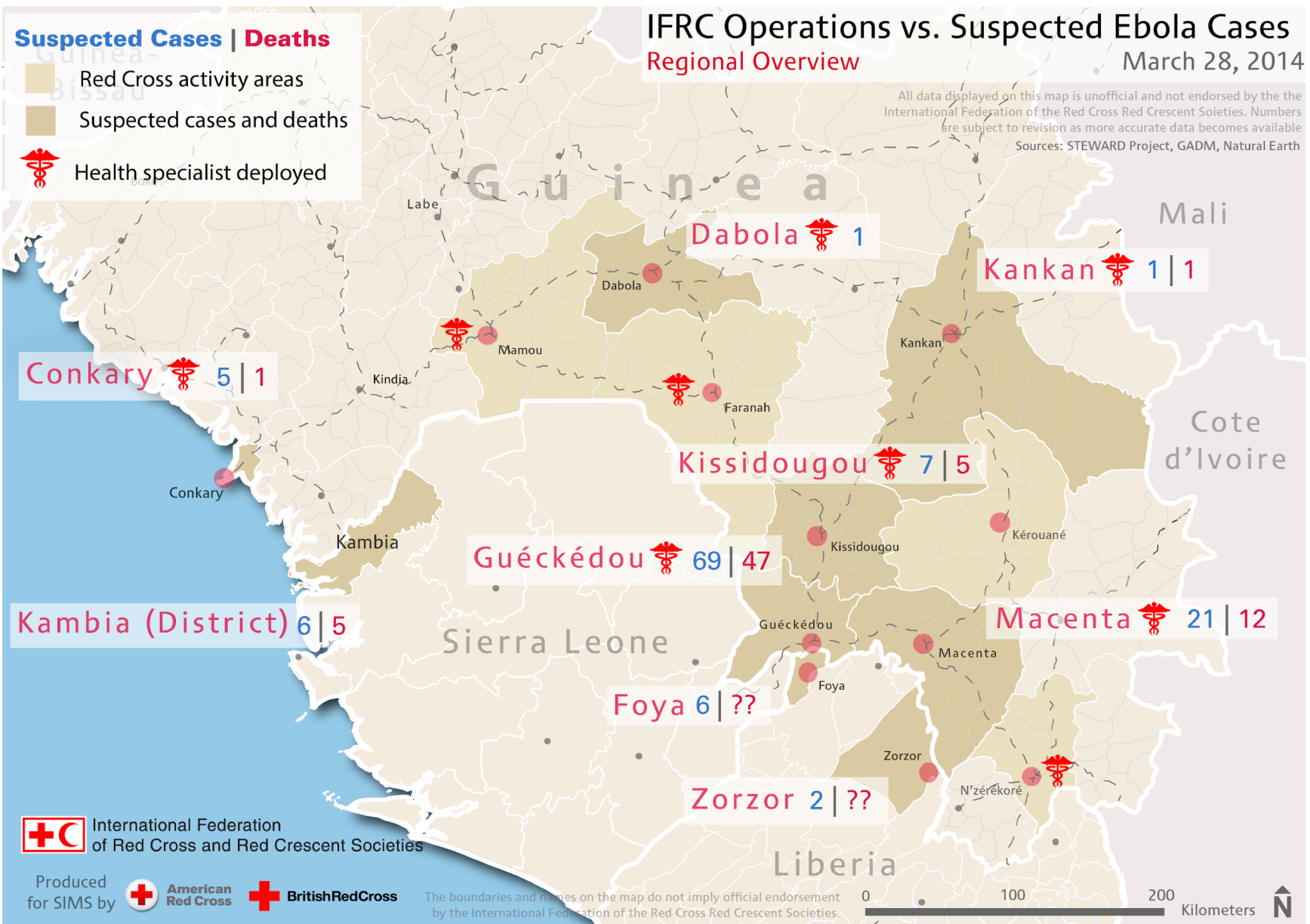


# Data is rarely perfect

[illegible]

Admissions, Currently in Treatment, and Discharges:  
Montserrado

	Ebola Treatment Units				
	New admissions	Total Currently in treatment	Confirmed cases currently in treatment	Discharged Cured	Discharged as Not a Case
ELWA 2	0	10	2	0	0
Bong	0	1	0	0	0
Sinje	0	1	0	0	0
Ganta	0	0	0	0	0
Total	0	12	2	0	0

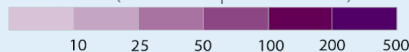


# West Africa Ebola Outbreak

New Cases  
29 September 2014



New Cases (since 23 September 2014)



Affected Districts, no new cases



Country	New Cases	New Deaths
Guinea	95	36
Liberia	355	260
Sierra Leone	370	20

Total cases and deaths include "Probable/Suspected" and "Confirmed"

Sources: GADM, Natural Earth, STEWARD Project, Africa Albers Equal Area Conic Projection, WGS 1984; Guinea - Organisation mondiale de la Santé (25 Sept); Liberia - Ministry of Health and Social Welfare (26 Sept); Sierra Leone - Ministry of Health and Sanitation (29 Sept)

Information is subject to revision as more data becomes available

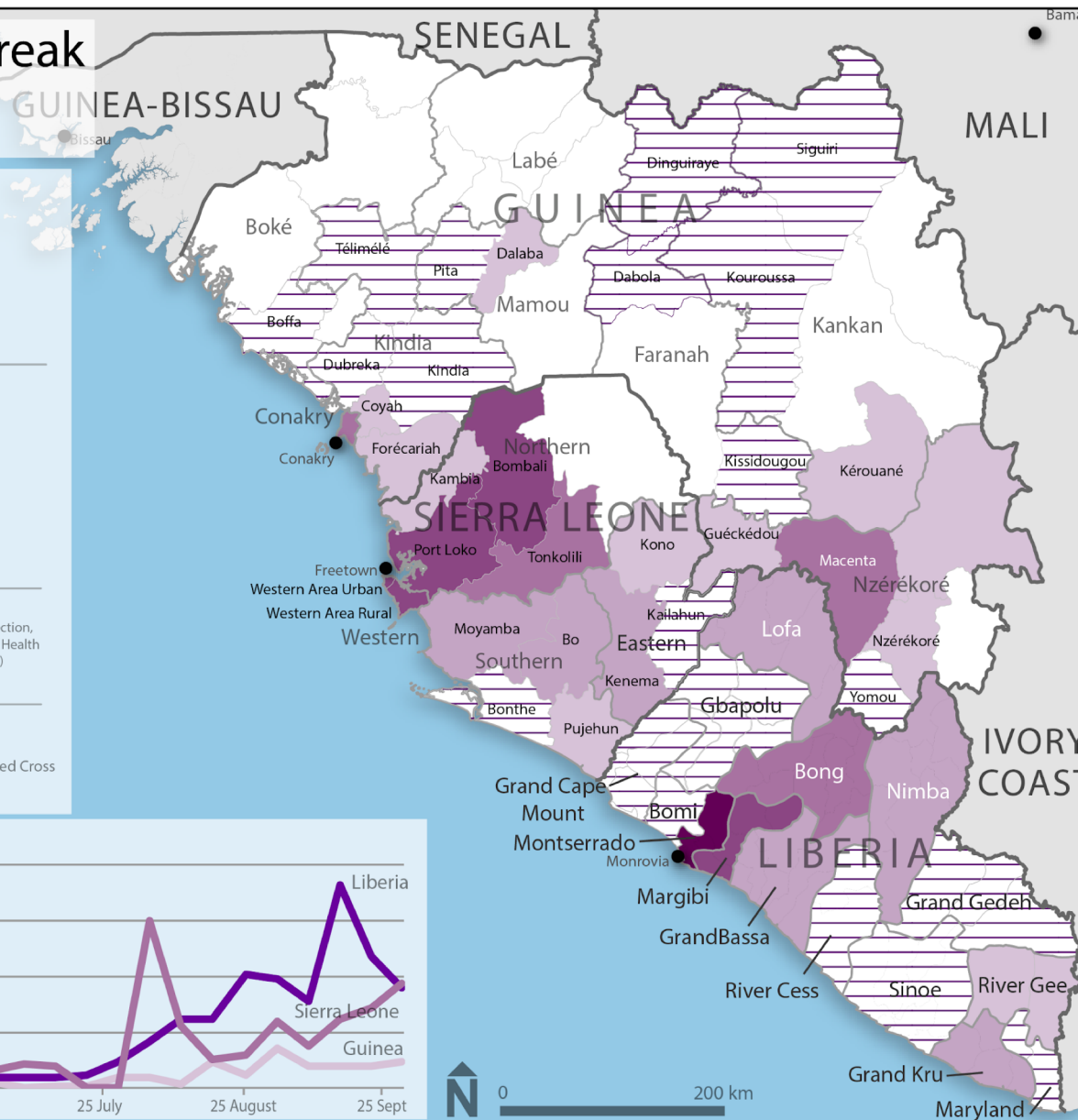
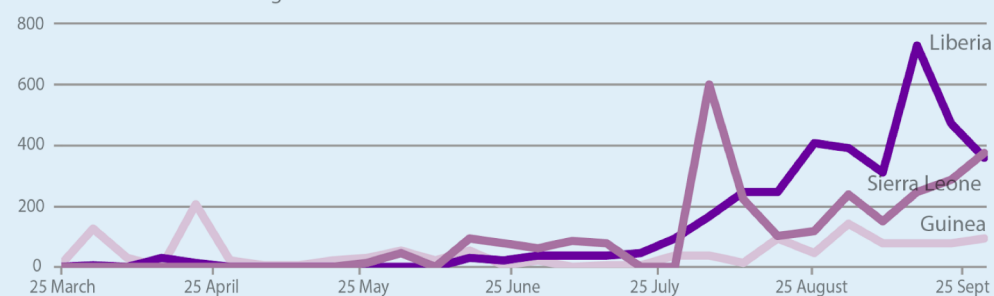


International Federation  
of Red Cross and Red Crescent Societies

Produced by SIMS, Supported by the American Red Cross and the British Red Cross

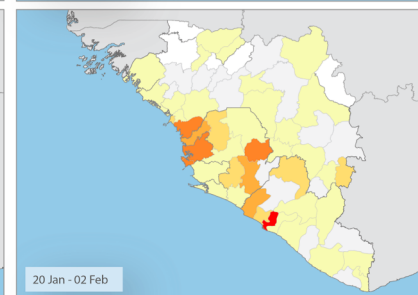
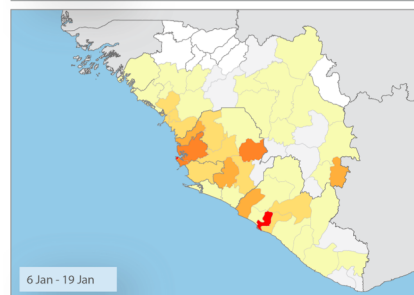
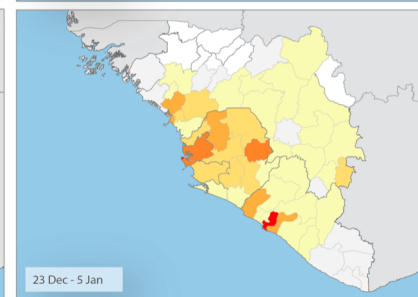
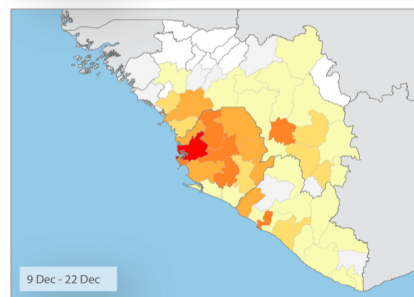
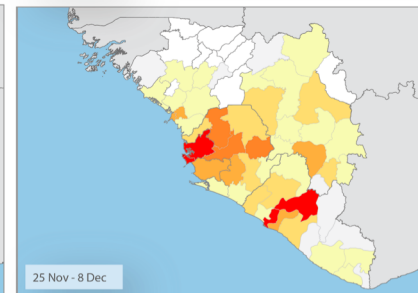
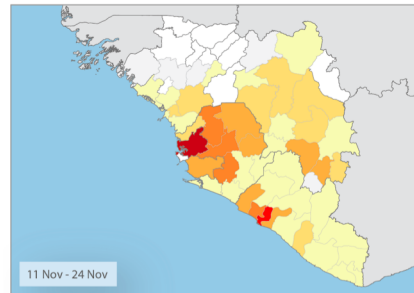
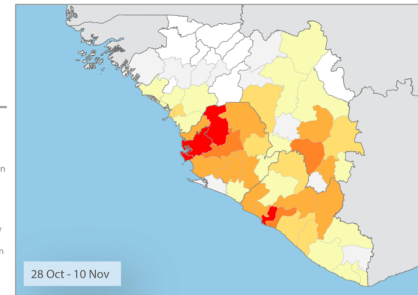
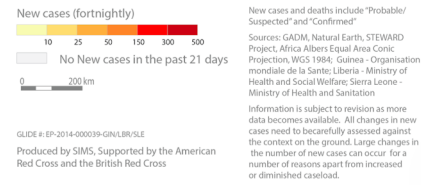
**FOR INTERNAL OPERATIONS ONLY**

New Cases across the region since March 25



International Federation of Red Cross and Red Crescent Societies  
Fédération internationale des Sociétés de la Croix-Rouge et du Croissant-Rouge  
Federación Internacional de Sociedades de la Cruz Roja y de la Media Luna Roja  
الاتحاد الدولي لجمعيات الصليب الأحمر والهلال الأحمر

## West Africa Ebola Outbreak New Cases Fortnightly Time-Series

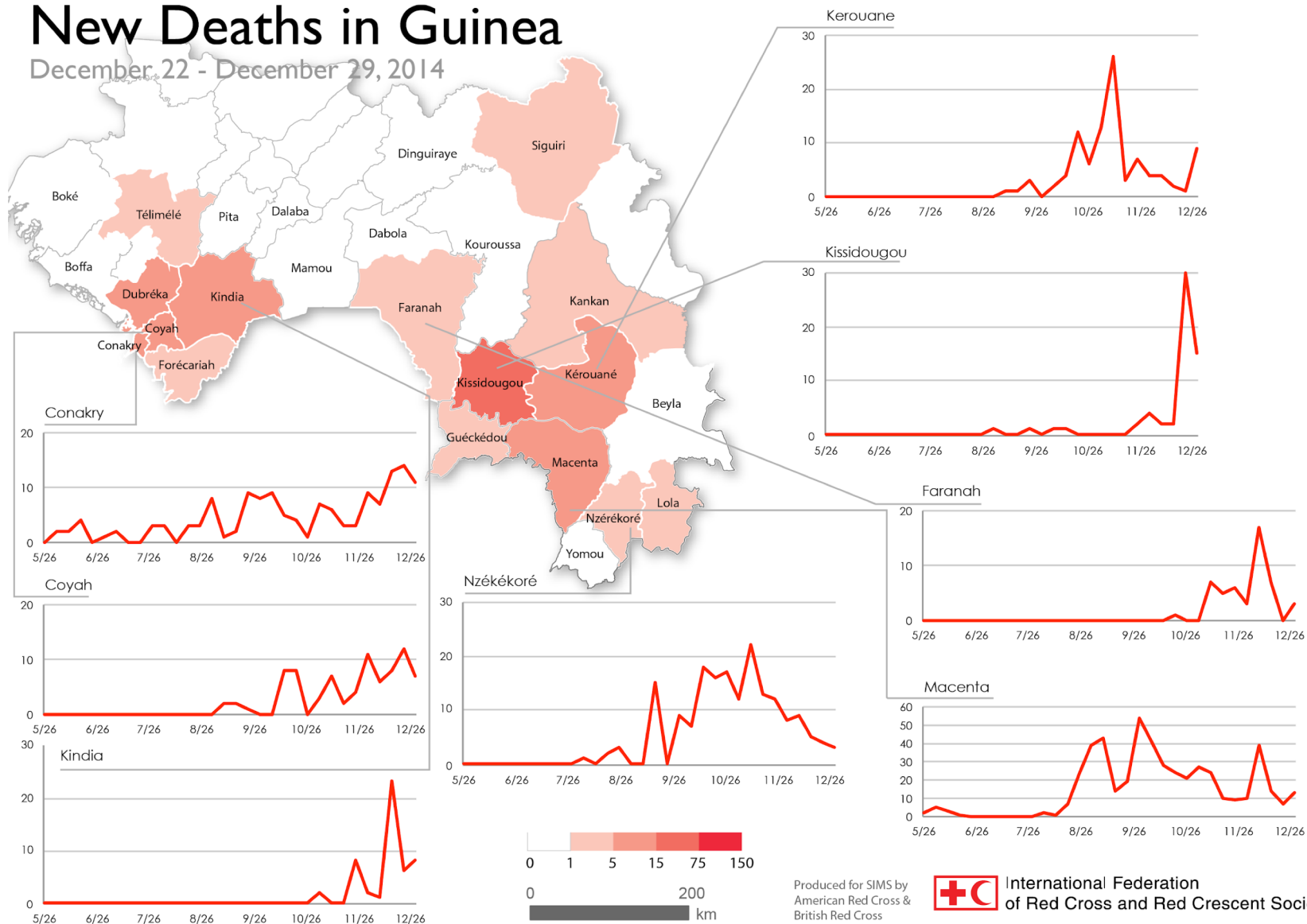


The maps used do not imply the expression of any opinion on the part of the International Federation of Red Cross and Red Crescent Societies or National Societies concerning the legal status of a territory or of its authorities.




# New Deaths in Guinea

December 22 - December 29, 2014



Produced for SIMS by  
American Red Cross &  
British Red Cross

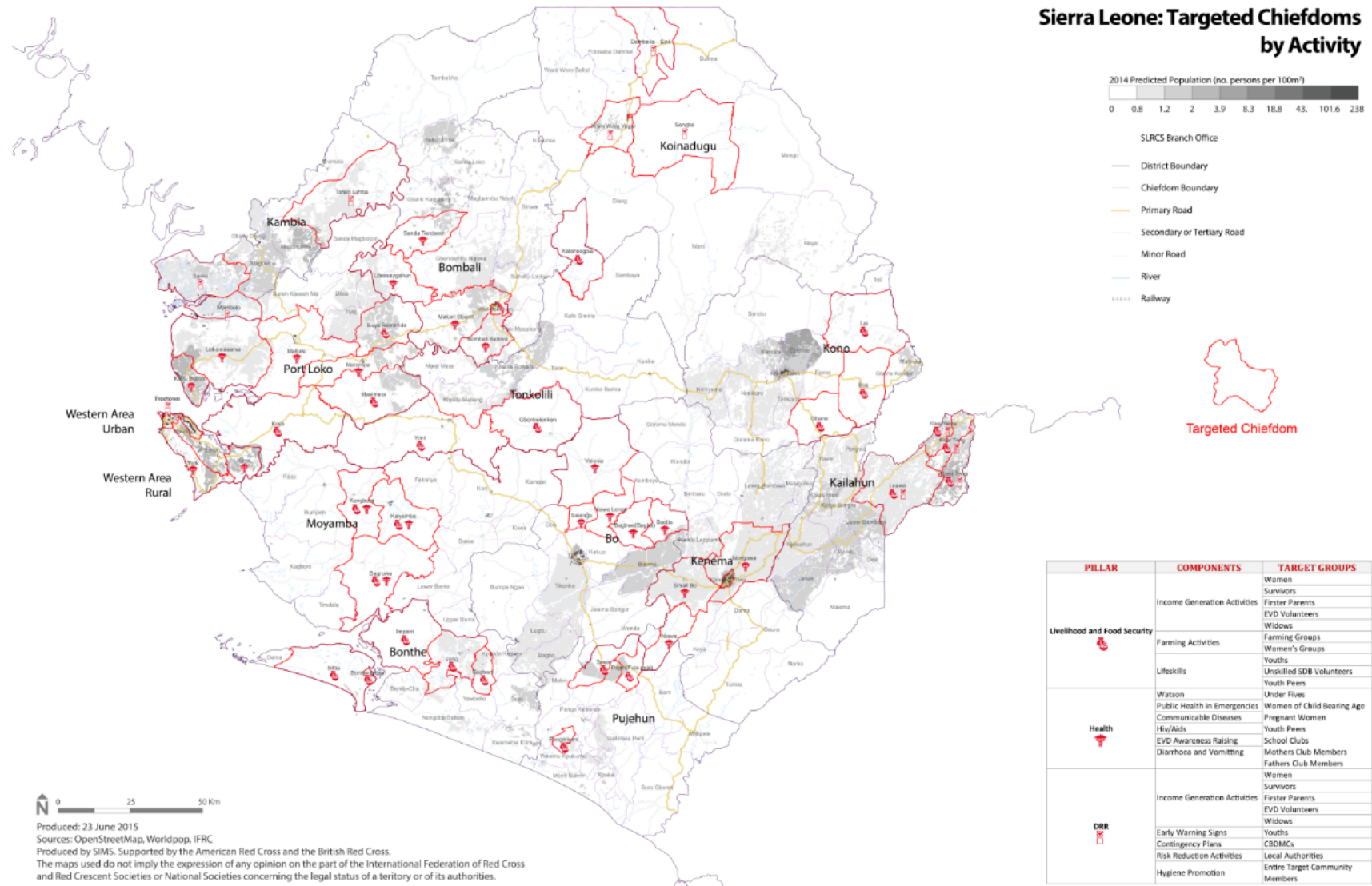
 International Federation  
of Red Cross and Red Crescent Societies





International Federation  
of Red Cross and Red Crescent Societies

## Sierra Leone: Targeted Chiefdoms by Activity



International Federation of Red Cross and Red Crescent Societies  
Fédération internationale des Sociétés de la Croix-Rouge et du Croissant-Rouge  
Federación Internacional de Sociedades de la Cruz Roja y de la Media Luna Roja  
الاتحاد الدولي لجمعيات الصليب الأحمر والهلال الأحمر





Nepal



International Federation of Red Cross and Red Crescent Societies  
Fédération internationale des Sociétés de la Croix-Rouge et du Croissant-Rouge  
Federación Internacional de Sociedades de la Cruz Roja y de la Media Luna Roja  
الاتحاد الدولي لجمعيات الصليب الأحمر والهلال الأحمر

DATA PLAYBOOK: SLIDEDECK 15



# Gap Analysis

D19

f<sub>x</sub>

A

B

C

D

E

F

G

H

I

J

K

L

M

N

O

P

Q

R

S

T

1

XXX District Chapter

2

Warehouse Received

3

Field warehouse name:

4

5

Items

Sum of Amount received

Items

Sum of Amount dispatchedd

Items

Current stock

6

Aqua Tab

330,000

Apron

2,001

10L Plastic Bucket with

3,930

7

Baby Kits

450

Laundry soap

1,001

20L Plastic Bucket with

2,201

8

Bamboo

190

Sugar

20

Apron

5,000

9

Chiura

198

Tarpaulin

1,328

Appy juice

0

10

Dal

56

Grand Total

4,350

Aqua Tab

330,000

11

Hand washing soap

3,440

Baby Kits

450

12

Hygiene Kit

1,343

Bamboo

190

13

Juice

9

Big tent

0

14

Kambal

3,000

Biscuit

18

15

Mask

2,900

Biscuit ABC

0

16

Mineral Water

131

Biscuit Butter Craker

0

17

NFRI Set

3,500

Biscuit Chocolate wafer

0

18

Noodles

312

Biscuit Coconut

0

19

ORS

5,000

Biscuit Glucose

0

20

Rice

18

Biscuit Marie

0

21

Salt

110

Biscuit Pine Apple

0

22

Squating Plates

57

Biscuit Sugar Free

0

23

Sugar

1,020

Biscuit Top

0

24

Tarpaulin

20,864

Blanket

0

25

Tent

264

Brochures

0

26

Toilet Paper

39

Brouchers

484

27

Pheynel

260

Cap

0

28

Purification powder (1mg )

80

Chiura

198

29

Dead body management bag

60

Cotton

0

30

Jerry Can 10L

50

Dal

56

31

Shelter Kit

1

Dead body management

60

32

Jerry Can 20L

50

Flag

0

33

Biscuit

18

Flag RC

0

34

20L Plastic Bucket with cover

2,201

Gloves

0

35

10L Plastic Bucket with cover

3,930

Hand washing soap

3,440

36

Plastic Mug 1L

4,750

Hulas Chiura

0

37

Plastic Mug 2L

5,541

Hygiene Kit

1,343

38

Laundry Soap

1,000

Jerry Can 10L

50

39

Brouchers

484

Jerry Can 20L

50

40

Apron

5,000

Joot Dori

0

41

Grand Total

396,326

Juice

9

42

Kambal

3,000

43

1

Received

2

Dispatch

Warehouse stock

Dispatched Items

3

Individual distributions

4

Distribution Daily

5

Distribution-rollup

list\_Items

list\_Orgs

list\_Activities

list\_Units

list\_Status

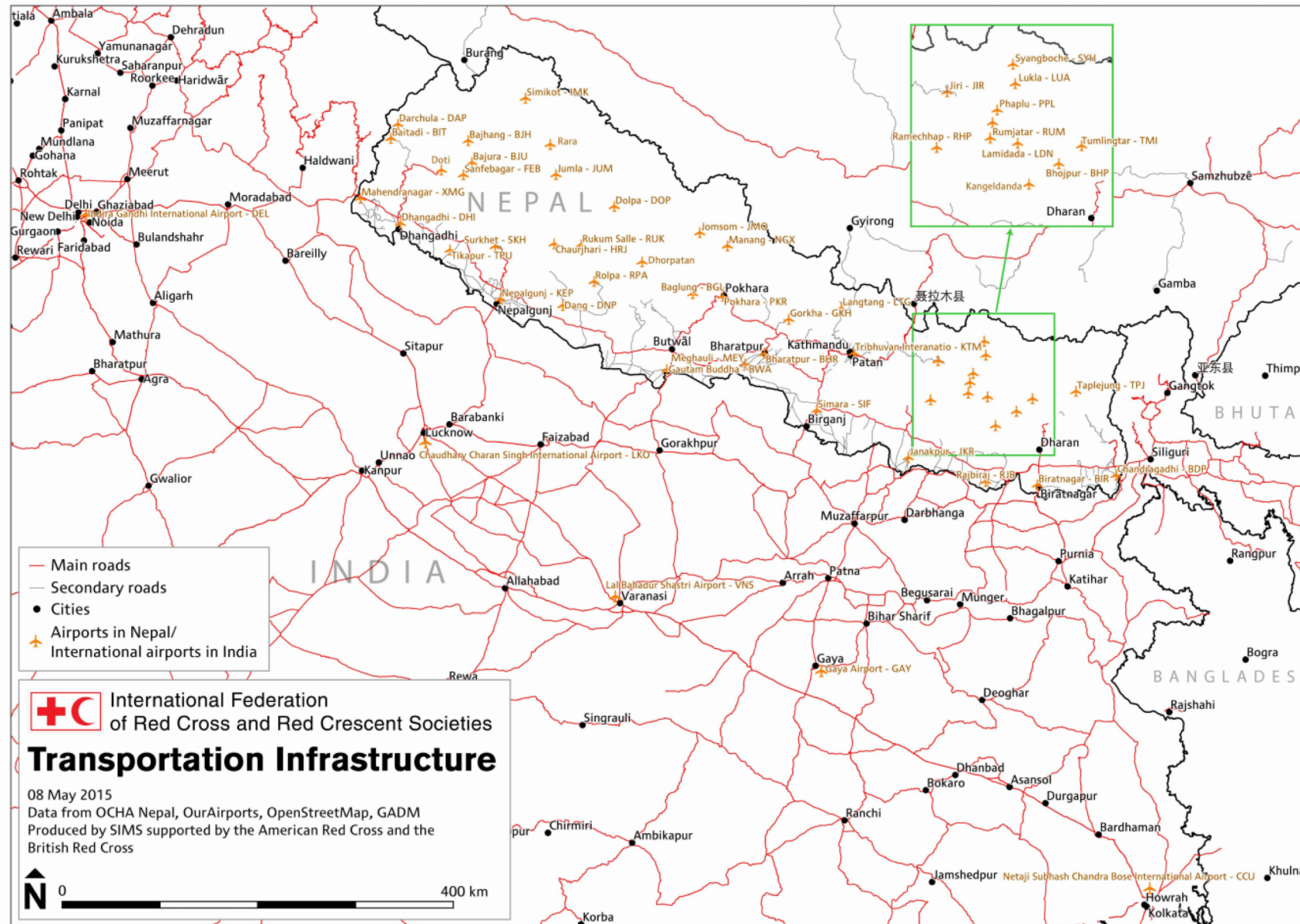
list\_VDCs

match

Ready



# Logistics



International Federation of Red Cross and Red Crescent Societies  
Fédération internationale des Sociétés de la Croix-Rouge et du Croissant-Rouge  
Federación Internacional de Sociedades de la Cruz Roja y de la Media Luna Roja  
الاتحاد الدولي لجمعيات الصليب الأحمر والهلال الأحمر



# Logistics

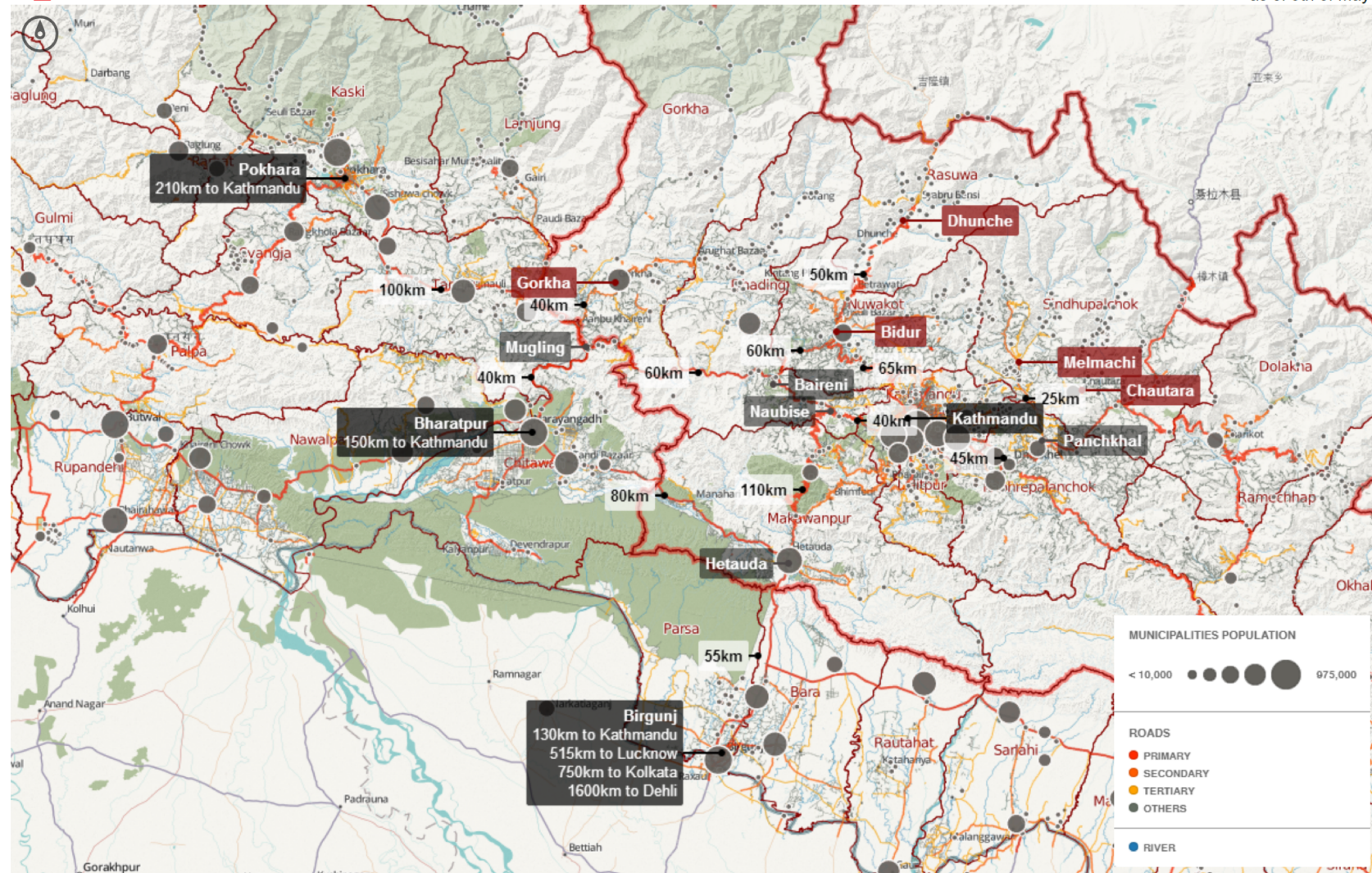


Nepal Red Cross Society



International Federation  
of Red Cross and Red Crescent Societies

**Transport to Most Affected Areas**  
as of 9th of May



The maps used do not imply the expression of any opinion on the part of the International Federation of Red Cross and Red Crescent Societies or National Societies concerning the legal status of a territory or of its authorities.  
Produced by SIMS supported by the American Red Cross and the British Red Cross



International Federation of Red Cross and Red Crescent Societies  
Fédération internationale des Sociétés de la Croix-Rouge et du Croissant-Rouge  
Federación Internacional de Sociedades de la Cruz Roja y de la Media Luna Roja  
الاتحاد الدولي لجمعيات الصليب الأحمر والهلال الأحمر

DATA PLAYBOOK: SLIDEDECK 15

# Health

## Nepal Earthquake 2015 HIS Dashboard

Click charts to interact with them. This dashboard contains the data that was age disaggregated.

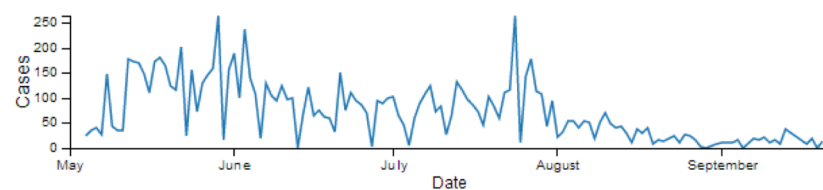
[Browse Other Dashboard](#)

Last Update: 20th September 2015

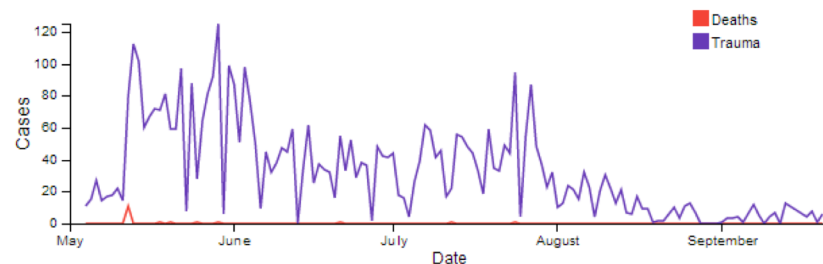
[Download latest version](#)

Date | Current filter:

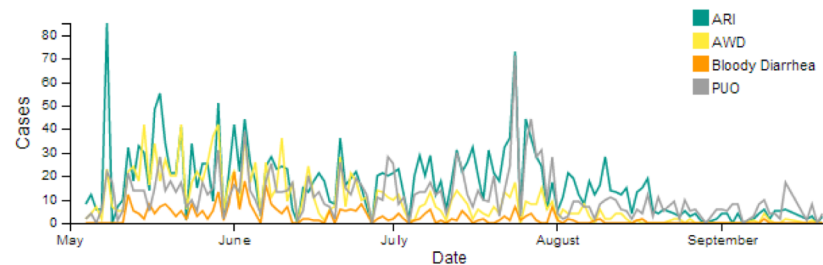
### Cases Per Day - Deaths, Trauma & Diseases (Filterable)



### Deaths and Trauma

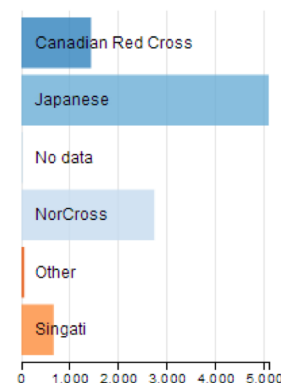


### ARI, AWD, Bloody Diarrhea, POU

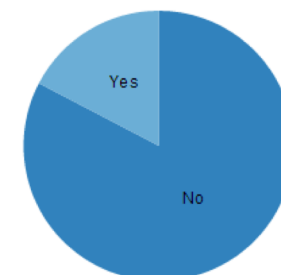


### Red Cross Unit (Filterable)

One or more RCs can be chosen



### Under 5 (Filterable)



[Reset All](#)

Dates filtered:

Deaths

18

Trauma

4,518

ARI

2,296

AWD

1,254

Bloody Diarrhea

337

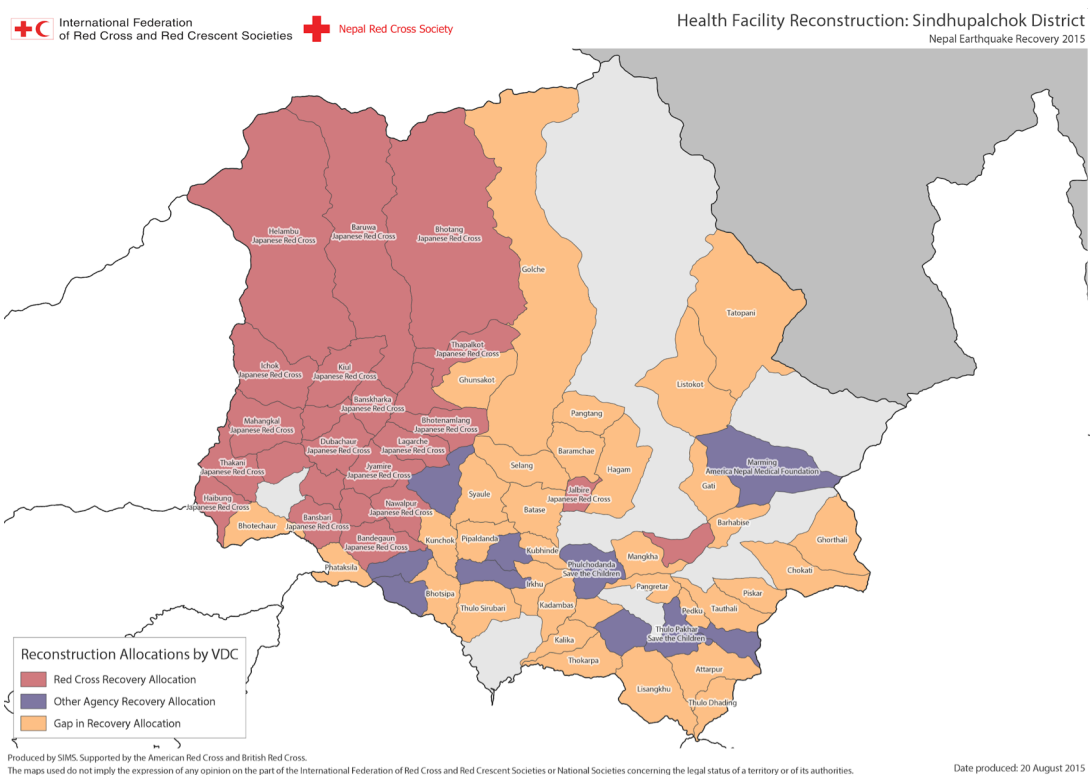
POU

1,573

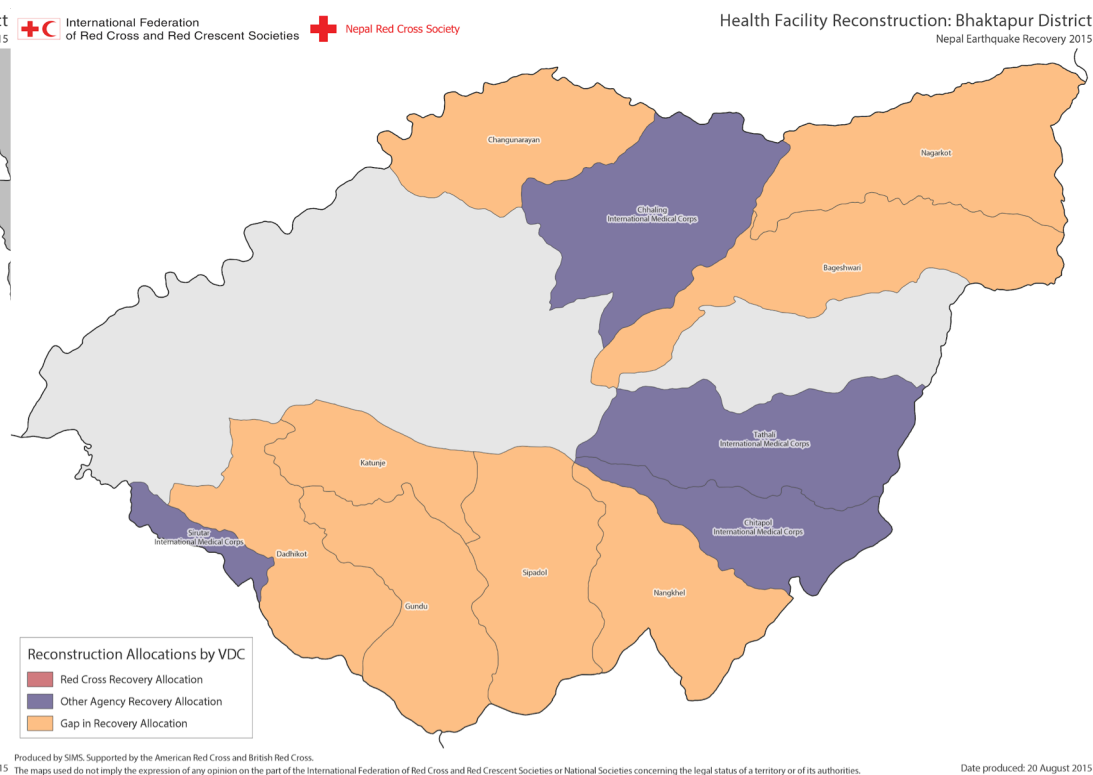


International Federation of Red Cross and Red Crescent Societies  
Fédération internationale des Sociétés de la Croix-Rouge et du Croissant-Rouge  
Federación Internacional de Sociedades de la Cruz Roja y de la Media Luna Roja  
الاتحاد الدولي لجمعيات الصليب الأحمر والهلال الأحمر

# Health



Produced by SIMS. Supported by the American Red Cross and British Red Cross.  
The maps used do not imply the expression of any opinion on the part of the International Federation of Red Cross and Red Crescent Societies or National Societies concerning the legal status of a territory or of its authorities.

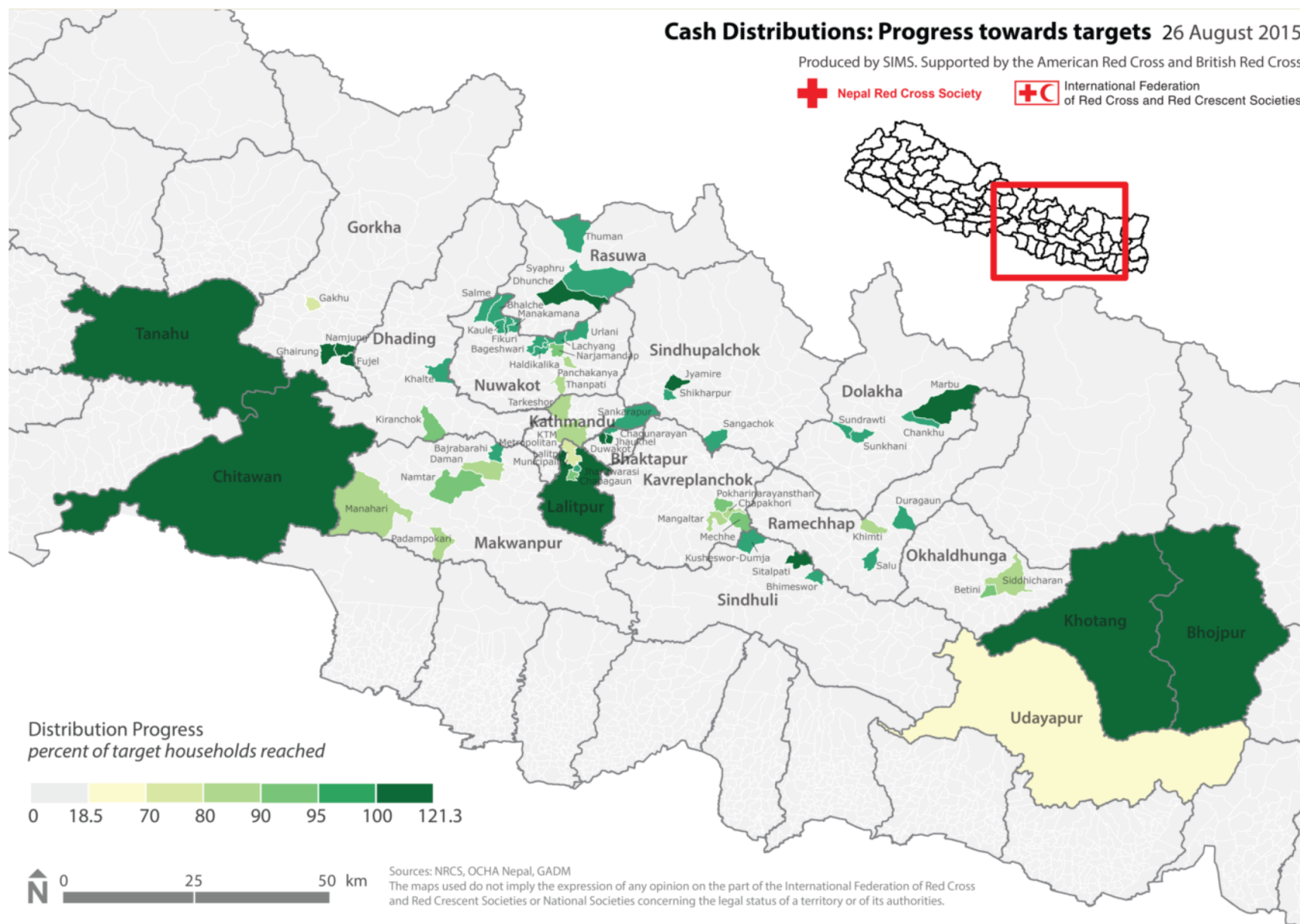


Date produced: 20 August 2015 The maps used do not imply the expression of any opinion on the part of the International Federation of Red Cross and Red Crescent Societies or National Societies concerning the legal status of a territory or of its authorities





# Cash & Relief

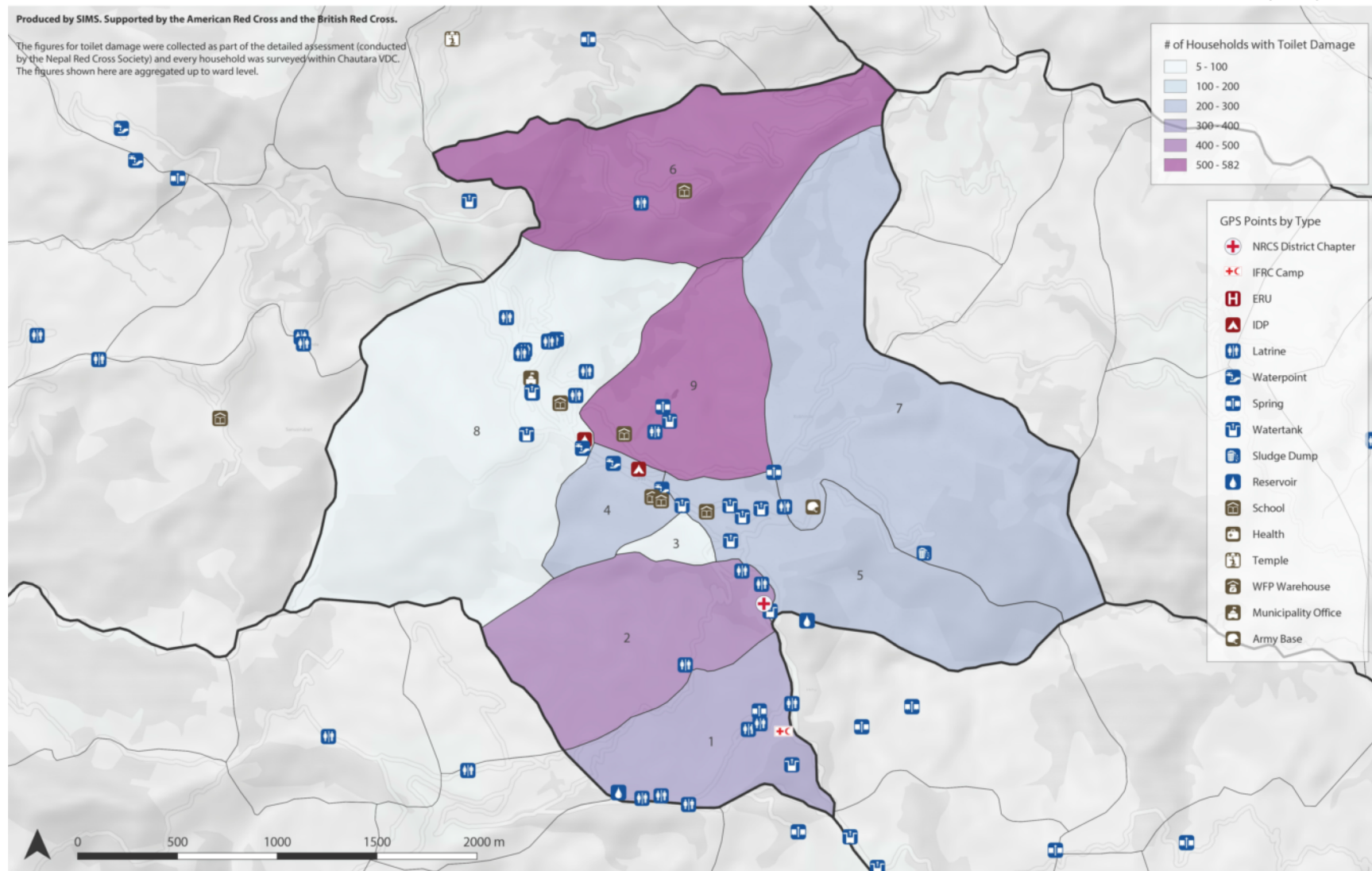


International Federation of Red Cross and Red Crescent Societies  
Fédération internationale des Sociétés de la Croix-Rouge et du Croissant-Rouge  
Federación Internacional de Sociedades de la Cruz Roja y de la Media Luna Roja  
الاتحاد الدولي لجمعيات الصليب الأحمر والهلال الأحمر

# MSM

Produced by SIMS. Supported by the American Red Cross and the British Red Cross.

The figures for toilet damage were collected as part of the detailed assessment (conducted by the Nepal Red Cross Society) and every household was surveyed within Chautara VDC. The figures shown here are aggregated up to ward level.



Source: NRCS, BRC MSM ERU, UNOCHA, OSM, ASTER  
 Produced: 17 July 2015

The maps used do not imply the expression of any opinion on the part of the International Federation of Red Cross and Red Crescent Societies or National Societies concerning the legal status of a territory or of its authorities.

FOR INTERNAL USE ONLY  
 EQ-2015-000048-NPL



International Federation of Red Cross and Red Crescent Societies  
 Fédération internationale des Sociétés de la Croix-Rouge et du Croissant-Rouge  
 Federación Internacional de Sociedades de la Cruz Roja y de la Media Luna Roja  
 الاتحاد الدولي لجمعيات الصليب الأحمر والهلال الأحمر

# Dashboard

## Nepal Earthquake 2015 HIS Dashboard

Click charts to interact with them. This dashboard contains the data that was age disaggregated.

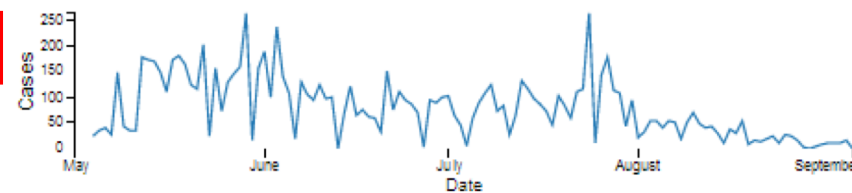
[Browse Other Dashboard](#)

Last Update: 5th September 2015

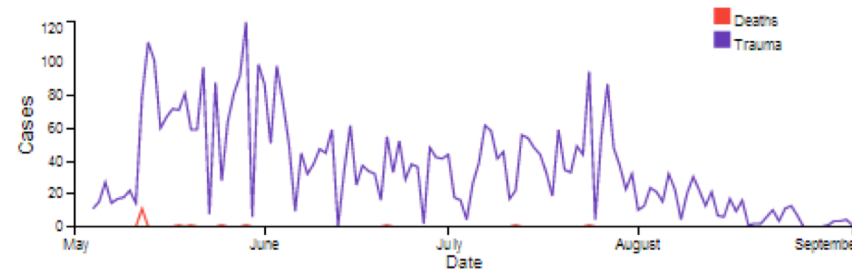
[Download latest version](#)

Date | Current filter:

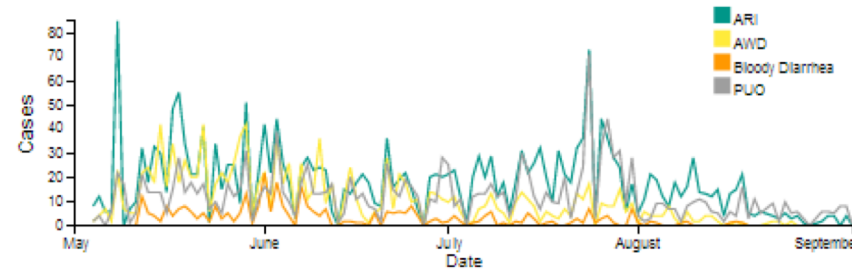
Cases Per Day - Deaths, Trauma & Diseases (Filterable)



Deaths and Trauma

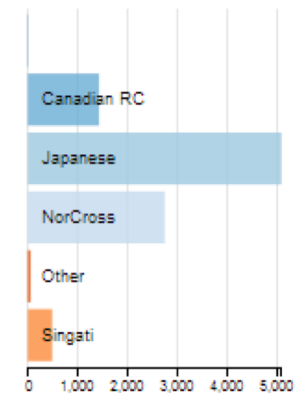


ARI, AWD, Bloody Diarrhea, POU

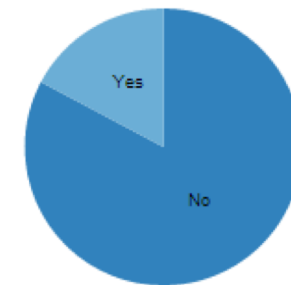


Red Cross Unit (Filterable)

One or more RCs can be chosen



Under 5 (Filterable)



[Reset All](#)

Dates filtered:

Deaths

18

Trauma

4,465

ARI

2,260

AWD

1,246

Bloody Diarrhea

336

POU

1,516



International Federation of Red Cross and Red Crescent Societies  
Fédération internationale des Sociétés de la Croix-Rouge et du Croissant-Rouge  
Federación Internacional de Sociedades de la Cruz Roja y de la Media Luna Roja  
الاتحاد الدولي لجمعيات الصليب الأحمر والهلال الأحمر



# Situational Report

**NRCS - SitRep**  
Earthquake 2015 - Situation Report

 **Nepal Red Cross Society**  **International Federation of Red Cross and Red Crescent Societies**  
Report published the 20th of August 2015

Source: [Nepal Red Cross Society](#)  
Produced by SIMS supported by ARC and BRC  
For feedback email: [brainbaut@redcross.org.uk](mailto:brainbaut@redcross.org.uk)

Choose layers to show using the button on the top right of the maps. Hover the maps with the house to display figures at District level.



District	Total	Damage Type
-   00%	8,857	Dead People
-   00%	275	Missing People
-   00%	17,932	Injured People
-   00%	1,160,516	Affected Families
-   00%	649,815	Displaced Families
-   00%	638,979	Fully Dest. Houses
-   00%	300,639	Partially Dest. Houses



District	Total	Distributed Item
-   00%	11,332	NFRI-Full-set
-   00%	111,150	Tarpaulin
-   00%	28,322	Blankets
-   00%	133,314	ORS
-   00%	51,526	Hygiene-kits
-   00%	602,448	Aqua-Tab
-   00%	79,186	Soap



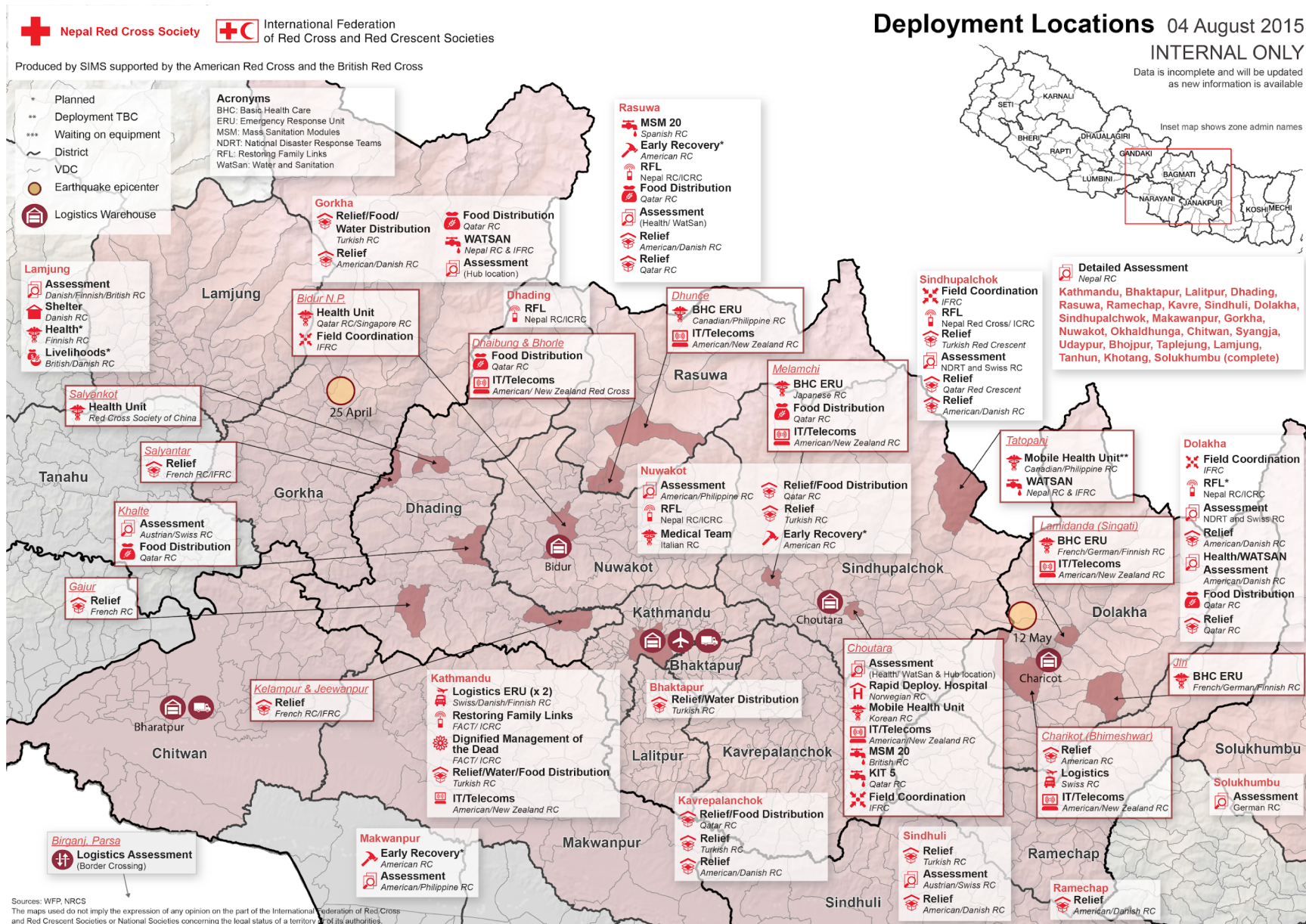
District	Total	Responders
-   00%	4,482	FA
-   00%	678	CADRE/Rescue
-   00%	76	NDRT
-   00%	36	PSS
-   00%	140	RFL/DBM
-   00%	214	WASH
-   00%	170	DDRT
-   00%	2,151	Other
-   00%	23	Intnl. Deleg./Vol.
-   00%	7,970	All

The maps used do not imply the expression of any opinion on the part of the International Federation of Red Cross and Red Crescent Societies or National Societies concerning the legal status of a territory or of its authorities.



International Federation of Red Cross and Red Crescent Societies  
Fédération internationale des Sociétés de la Croix-Rouge et du Croissant-Rouge  
Federación Internacional de Sociedades de la Cruz Roja y de la Media Luna Roja  
الاتحاد الدولي لجمعيات الصليب الأحمر والهلال الأحمر

3W



International Federation of Red Cross and Red Crescent Societies  
Fédération internationale des Sociétés de la Croix-Rouge et du Croissant-Rouge  
Federación Internacional de Sociedades de la Cruz Roja y de la Media Luna Roja  
الاتحاد الدولي لجمعيات الصليب الأحمر والهلال الأحمر

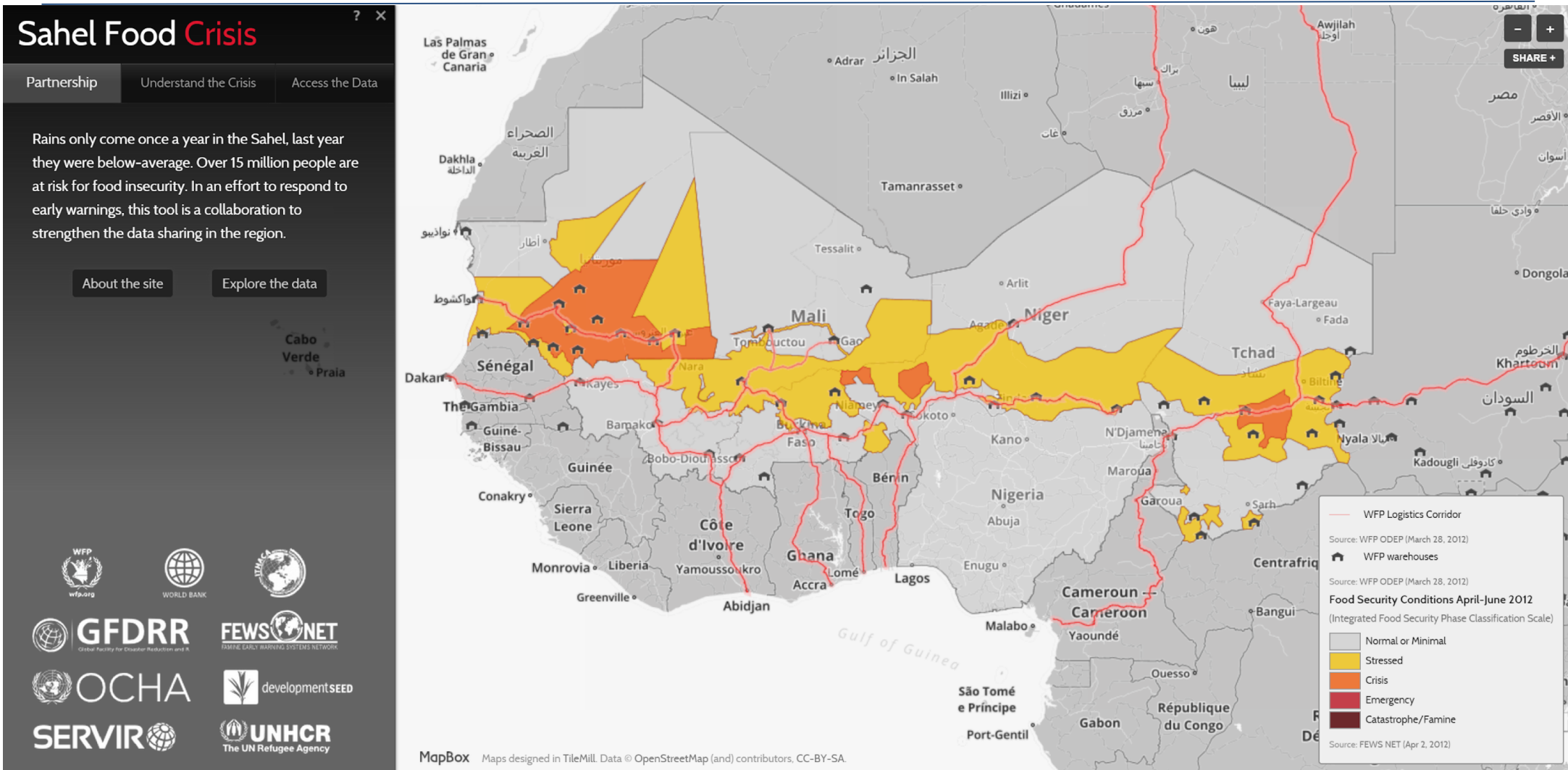


Remember - there are other organisations too!



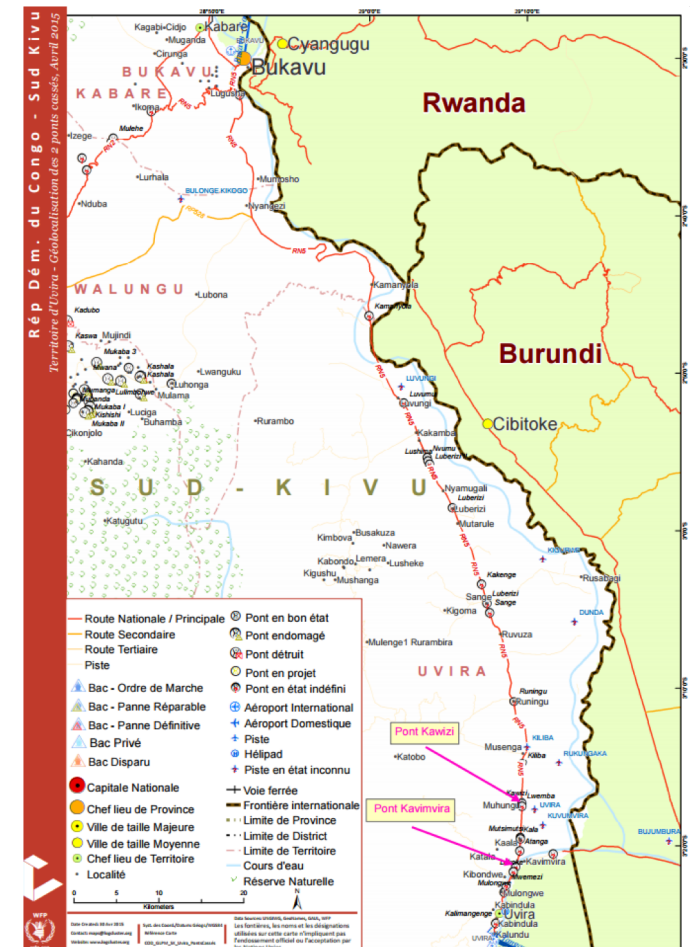
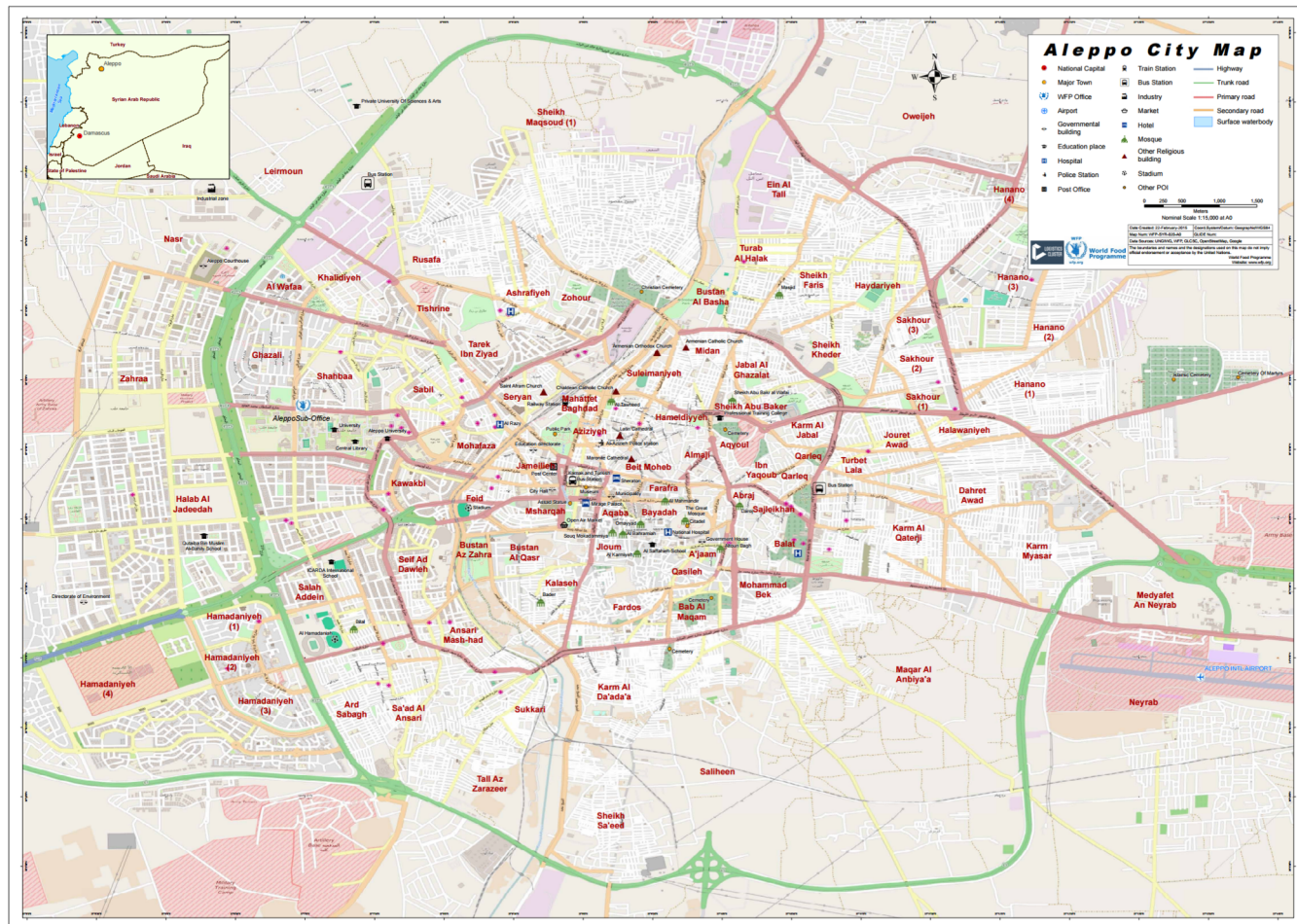


# Logistics Cluster



International Federation of Red Cross and Red Crescent Societies  
Fédération internationale des Sociétés de la Croix-Rouge et du Croissant-Rouge  
Federación Internacional de Sociedades de la Cruz Roja y de la Media Luna Roja  
الاتحاد الدولي لجمعيات الصليب الأحمر والهلال الأحمر

# Logistics Cluster




International Federation of Red Cross and Red Crescent Societies  
Fédération internationale des Sociétés de la Croix-Rouge et du Croissant-Rouge  
Federación Internacional de Sociedades de la Cruz Roja y de la Media Luna Roja  
الاتحاد الدولي لجمعية الصليب الأحمر والهلال الأحمر

DATA PLAYBOOK: SLIDEDECK 15



# Map Action




**MapAction**

**Nepal: Earthquake Population in areas without vehicular access**

Map shows population living in VDCs reported to have no vehicular access. Access data reported by the Nepal Food Security Monitoring Programme via WFP / Logistics Cluster.

**Data sources**  
Situational data: WFP/Logistics Cluster from Nepal Food Security Monitoring Programme (NeKSAP)



Boundaries: UN OCHA Settlements: OSM Physical features: Geonode

• Village  
 • Town  
 • City


**Roads**

— Primary  
 — Secondary  
 — Tertiary

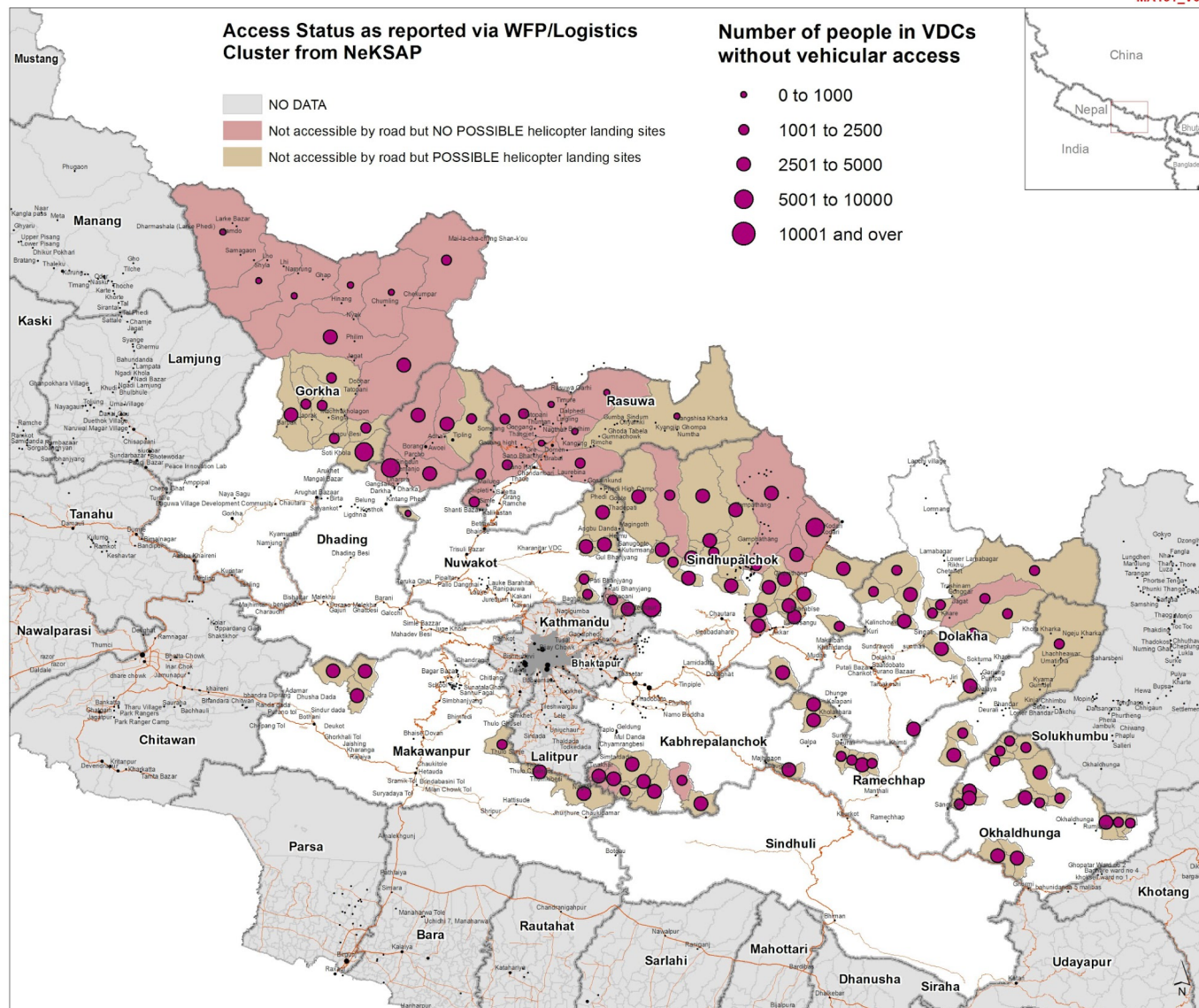
0 10 20 30 40  
 kilometres  
 Scale 1:800,000 (at A3 size)

Created 11 May 2015 / 12:00 UTC +05:45  
 Map Document MA131\_V01\_RemoteAccessPlanning  
 Projection / Datum Geographic / WGS84  
 Glide Number EQ-2015-000048-NPL

Produced by MapAction  
 nepal@mapaction.org  
 www.mapaction.org

Supported by  


The depiction and use of boundaries, names and associated data shown here do not imply endorsement or acceptance by MapAction.



MA131\_V01



International Federation of Red Cross and Red Crescent Societies  
 Fédération internationale des Sociétés de la Croix-Rouge et du Croissant-Rouge  
 Federación Internacional de Sociedades de la Cruz Roja y de la Media Luna Roja  
 الاتحاد الدولي لجمعيات الصليب الأحمر والهلال الأحمر

DATA PLAYBOOK: SLIDEDECK 15

# Map Action



## Serbia: Floods - UNDAC Assessment of Logistics Capacity, 26 May 2014

UNDAC logistics capacity assessment mission, conducted 26/5/14. Refer to assessment report for results and full details.

### Route:

Belgrade - Kolari - Pozarevac - Petrovac - Velika Gradiska - Kostolac - Drmno Ram - Bradavac - Maljurevac - Bratinac - Mihailovac - Dobri Do - Gracac - Smederevska Palanka - Svilajnac - Jasenov - Medvedja - Miliva - Despotovac - Resavica - Popovnjak - Despotovac - Bukovac - Bekovac - Despotovac - Bisance - Belajnac - Glogovac - Jagodina - Kolare - Dragoljevac - Medojevac - Locika - Rabenovac - Tecic - Rekovac - B. Krusevica - Komarine - Motric - Zupanjev - Nadrje - Bogolovac - Dobroselica

○ Assessment Locations  
— Assessment Route

Main map scale 1: 1,000,000 (At A3)

### Data sources

Assessment: UNDAC  
Background Mapping: OpenStreetMap

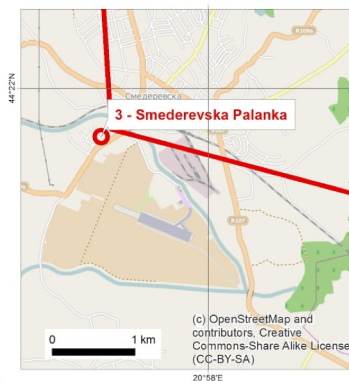
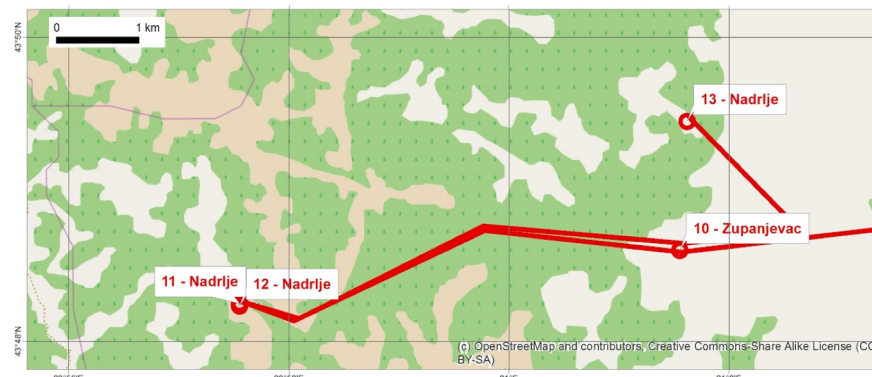
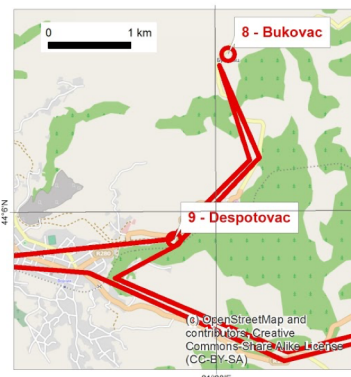
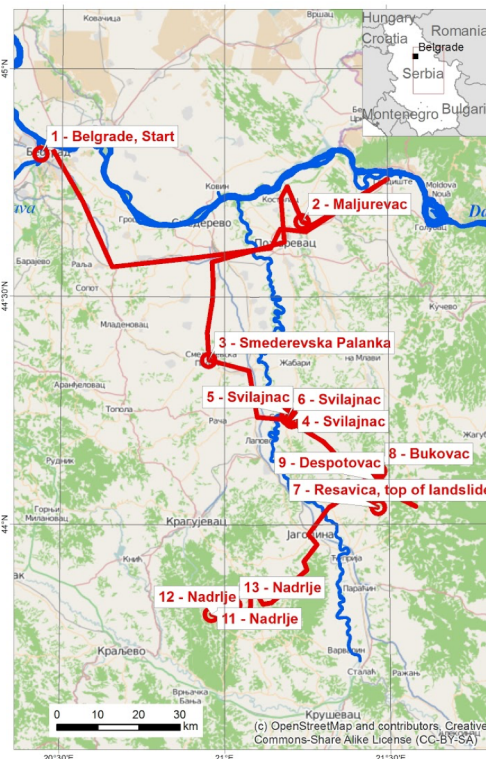
Created 28/05/2014 / 10:00 LT UTC+01:00  
Map Document MA025\_UNDAC\_LogisticsAssessmentRoute\_20140526\_A3

Projection / Datum WGS 1984 UTM Zone 34N

Produced by MapAction  
www.mapaction.org  
serbia@mapaction.org



The depiction and use of boundaries, names and associated data shown here do not imply endorsement or acceptance by MapAction.



MA025

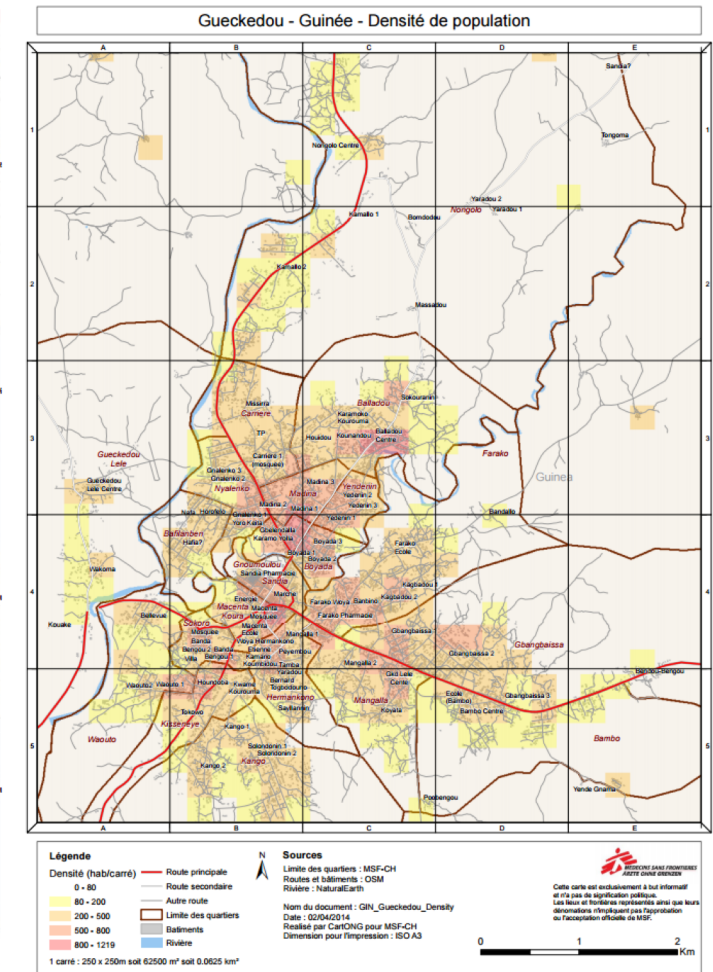
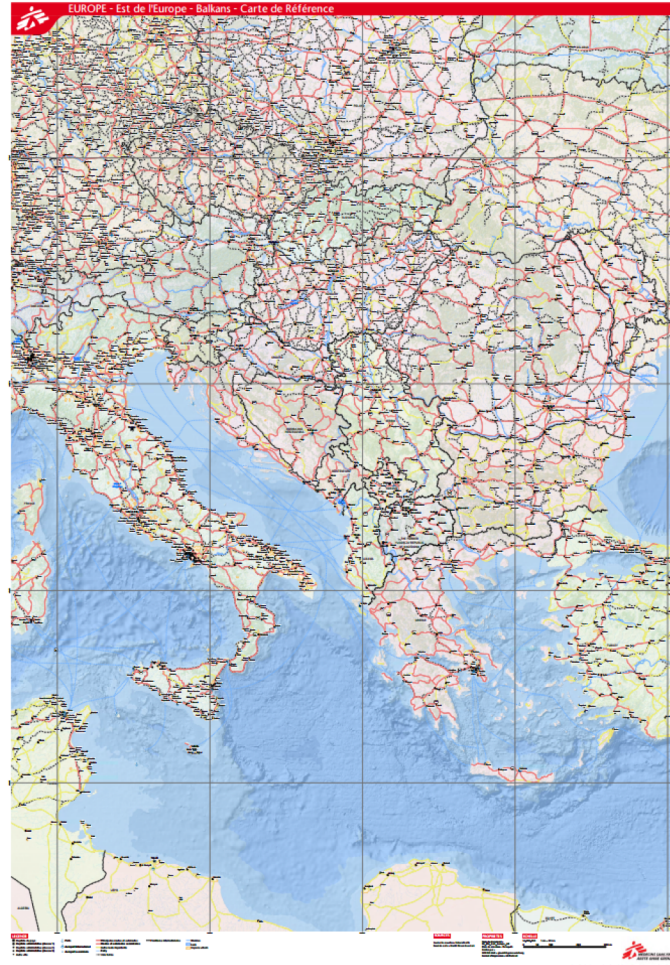
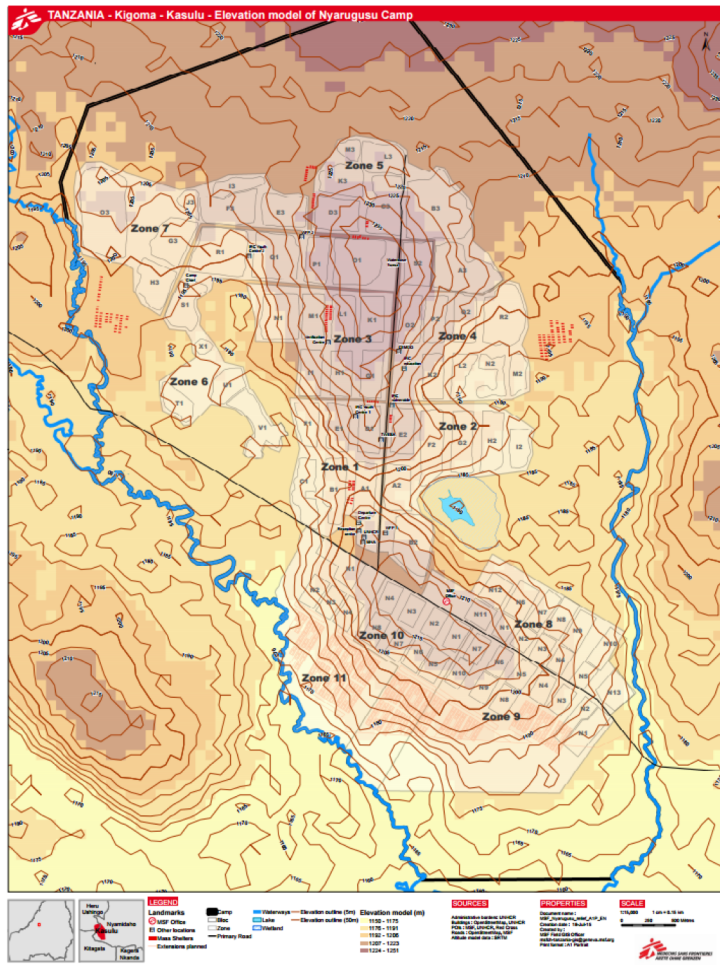


International Federation of Red Cross and Red Crescent Societies  
Fédération internationale des Sociétés de la Croix-Rouge et du Croissant-Rouge  
Federación Internacional de Sociedades de la Cruz Roja y de la Media Luna Roja  
الاتحاد الدولي لجمعية الصليب الأحمر والهلال الأحمر

DATA PLAYBOOK: SLIDEDECK 15



MSF





# OCHA

E14

3W Data Entry - Use the 3W data entry tool to add/delete entries (Menu > 3W TOOLBOX)

[Add a new organisation](#)

not duplicated entry (green dot)  
duplicated entry, check your data (red dot)

HIDE THESE COLUMNS

Acronym	Organisation	Org Type	Sector	Activity Type	Admin Unit Name	Pcode	Beneficiaries	Check Duplicated Entries	PT.Concat	Count PT.Cond	PT.ID	PT.FirstID	PT.LastID.R	PT.LstOrg	PT.Show
TD	Testing Organisation	National NGO	Education	Emergency	Anbar	IQ-G01	0	●	EducationIQ-G01	1	1	TRUE	0 TO		TRUE
TD	Testing Organisation	National NGO	Education	Emergency	Dahuk	IQ-G08	0	●	EducationIQ-G08	1	2	TRUE	0 TO		TRUE

Map0Geometry

Go to the 3W Data Entry Page

Standardized Scale

UPDATE DASHBOARD

Emergency Programs

Organisations working in Iraq

Organisations by Type

Organisations by Cluster

Education

Food Security and Agriculture

Health

Data Organisations Dashboard Report 2 Calculated table Vocabulary Gears Geometry Setup Instructions



International Federation of Red Cross and Red Crescent Societies  
Fédération internationale des Sociétés de la Croix-Rouge et du Croissant-Rouge  
Federación Internacional de Sociedades de la Cruz Roja y de la Media Luna Roja  
الاتحاد الدولي لجمعيات الصليب الأحمر والهلال الأحمر

# SIMS

## tools and resources



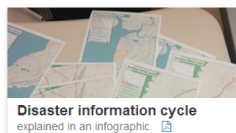
International Federation of Red Cross and Red Crescent Societies  
Fédération internationale des Sociétés de la Croix-Rouge et du Croissant-Rouge  
Federación Internacional de Sociedades de la Cruz Roja y de la Media Luna Roja  
الاتحاد الدولي لجمعيات الصليب الأحمر والهلال الأحمر

# FACT toolkit & rcrcsims.org

## Internal Resources



**SIMS one pager** gives a concise overview of SIMS activities, products and services. [Link](#)



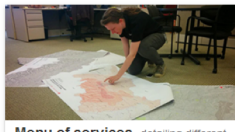
**Disaster information cycle** explained in an infographic. [Link](#)



**Cash in Emergencies Toolkit** by the International Red Cross and Red Crescent Movement to make cash transfer based programming (CTP) tools, practical guidance and minimum standards easily accessible. [Link](#)



**Activation flow** one pager describing the steps of the major phases of SIMS support: activation, response and transition. [Link](#)



**Menu of services** detailing different types of SIMS products and services. [Link](#)



**Tips and recommendations** for better information management. [Link](#)



**Monitoring and learning process** documenting how reviews support activities and changes based on lessons learned. [Link](#)



## Information Product Examples

## External Resources

SIMS makes a real effort to stay connected into the wider information management community within and beyond the humanitarian sector. These networks are essential for building skills, exchanging data and sharing experiences. You can find below a collection of the external groups that we work with on a regular basis. Some of them are mainly used for simply downloading and using templates, whereas others are actors with which we actively work and collaborate.



**OpenStreetMap (OSM)** is an open-source equivalent of Google Maps which allows anyone to edit and extract data. SIMS uses and contributes to this data in almost every response. [Link](#)



**Humanitarian Data Exchange (HDX)** is an open platform for sharing data between humanitarian actors and is a primary source of external data in our work. [Link](#)



**Shelter Cluster** is the star coordination mechanism for shelter response and is co-chaired by IF and UNHCR. SIMS works in close coordination with the cluster sharing data and experience.



**Humanitarian OpenStreetMap Team**



**Humanitarian ID** is an online app for simple and up-to-date contact lists that is



## Field Assessment and Coordination Team Toolkit

[FACT Mission Cycle\\_2 8 16\\_ID](#)

### A\_FACT Assessment

- [A2 24 Hour Assessment Checklist](#)
- [A3 72 Hour Assessment Checklist](#)
- [A4 Secondary Information Sources](#)
- [A5 FACT Situation Analysis and Response Recommendations Report TEMPLATE](#)
- [A6 Camp Assessment Template](#)
- [A7 Needs\\_Capacity\\_Analysis Form \(paper version\)](#)
- [A8 LogsAssessmentChecklist](#)

### B\_FACT Analysis and Decision Making

- [B2 SitRep Template v 3](#)
- [B3 Response Options Analysis Template](#)
- [B4 Scenario Mapping](#)
- [B5 IFRC-EPoA planning template](#)
- [B6 IFRC\\_DREF\\_Plan of Action\\_Guidance-EN\\_LR](#)
- [B7 FACT Situation Analysis and Response Recommendations Report v 2](#)
- [Detailed budget and expenditure format-DREF-EPoA-EA](#)

### C\_FACT Operational Planning

- [C4 Plan of Arrival Checklist](#)
- [C5 Security Plan Template](#)

### D\_FACT Coordination

- [D1 4Ws Coordination Tool](#)
- [D2 FACT Communications Plan Template](#)
- [D4 FACT IM Roles Checklist](#)

### M\_FACT Team Admin \_ Management

- [M01 Country\\_Response\\_Operation Contact List\\_TEMPLATE](#)
- [M05 FACT meeting note template](#)
- [M06 IM Briefing Pack Checklist.doc](#)
- [M08 FACT IM File Structure Outline](#)
- [M10 FACT EOM](#)

### SIMS Overview Documents

- [Basic Excel Skills](#)
- [IM to GIS Checklist](#)
- [Menu of Services\\_20151222](#)
- [SIMS\\_1Pg\\_\\_31015](#)



International Federation of Red Cross and Red Crescent Societies  
Fédération internationale des Sociétés de la Croix-Rouge et du Croissant-Rouge  
Federación Internacional de Sociedades de la Cruz Roja y de la Media Luna Roja  
الاتحاد الدولي لجمعيات الصليب الأحمر والهلال الأحمر

# Remote Support Tools



Dropbox -- data storage and content management system



Google Drive -- sharing spreadsheets, storage, etc.



CartoDB -- interactive maps without programming



Skype -- for coordination, communication



OneDrive -- can be option for some responses



Trello -- Kanban system, task management and priorities, remote coordination



QGIS -- opensource GIS software, improving rapidly



ArcGIS -- GIS industry standard software, high processing power



Adobe Suite -- PDFs, Illustrator used for high-detail cartography



International Federation of Red Cross and Red Crescent Societies  
Fédération internationale des Sociétés de la Croix-Rouge et du Croissant-Rouge  
Federación Internacional de Sociedades de la Cruz Roja y de la Media Luna Roja  
الاتحاد الدولي لجمعيات الصليب الأحمر والهلال الأحمر

# SIMSulation



International Federation of Red Cross and Red Crescent Societies  
Fédération internationale des Sociétés de la Croix-Rouge et du Croissant-Rouge  
Federación Internacional de Sociedades de la Cruz Roja y de la Media Luna Roja  
الاتحاد الدولي لجمعيات الصليب الأحمر والهلال الأحمر

DATA PLAYBOOK: SLIDEDECK 15



# SIMSulation

Each group will be assigned a trello board. Use this to keep in touch with others in your group, share thoughts and ideas as well as post final products. Also move the cards across the columns as you start and finish tasks

You will have one of the facilitators with your group. They will act as the Field team and/or SIMS coordinator.

At the end, each group will explain what they did and have a discussion around what they did.

# Wrap up and evaluation