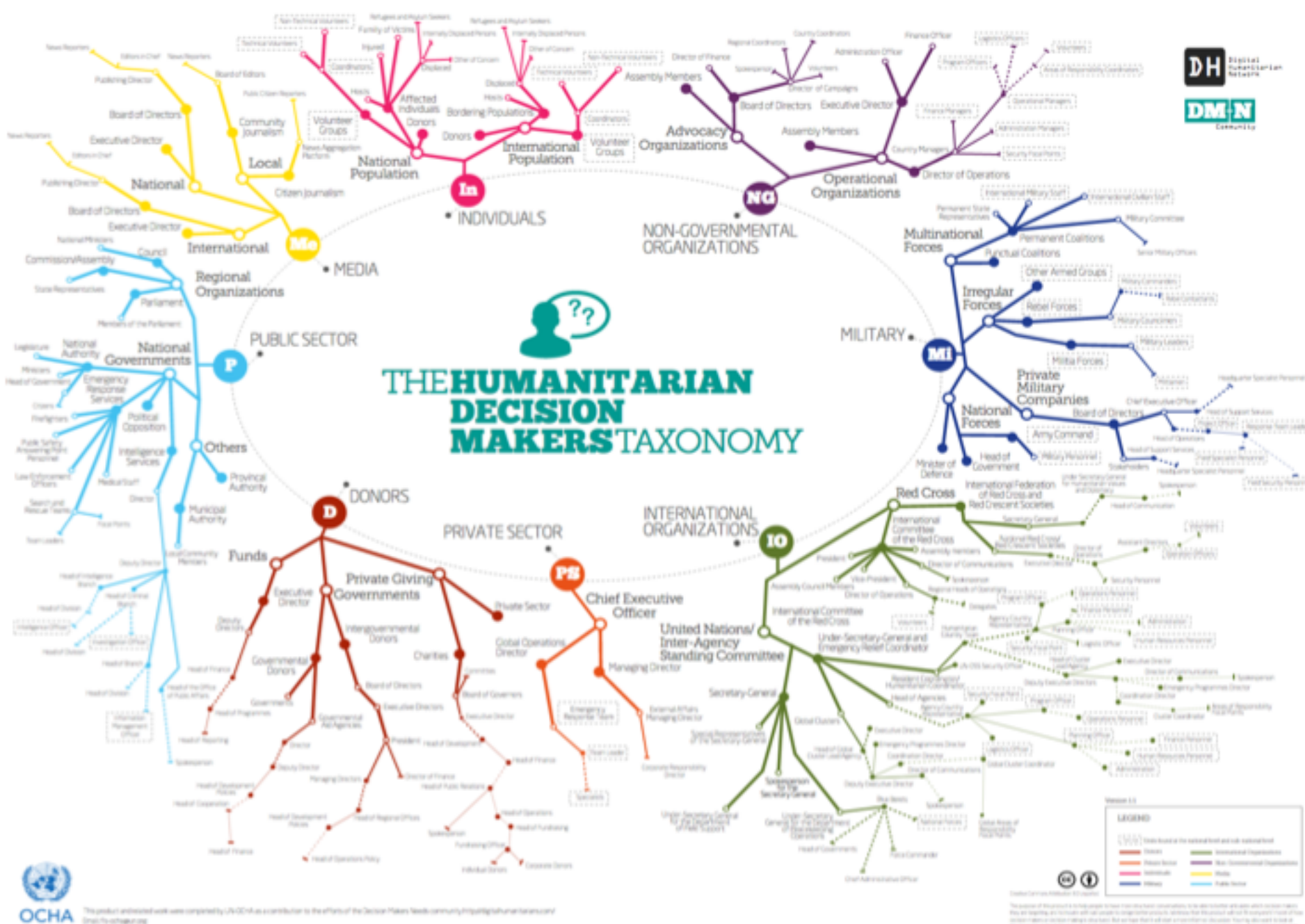


Data Sharing with Humanitarian Data Exchange (HDX)

Heather Leson, Data Literacy Lead
RCRC Forum 2017

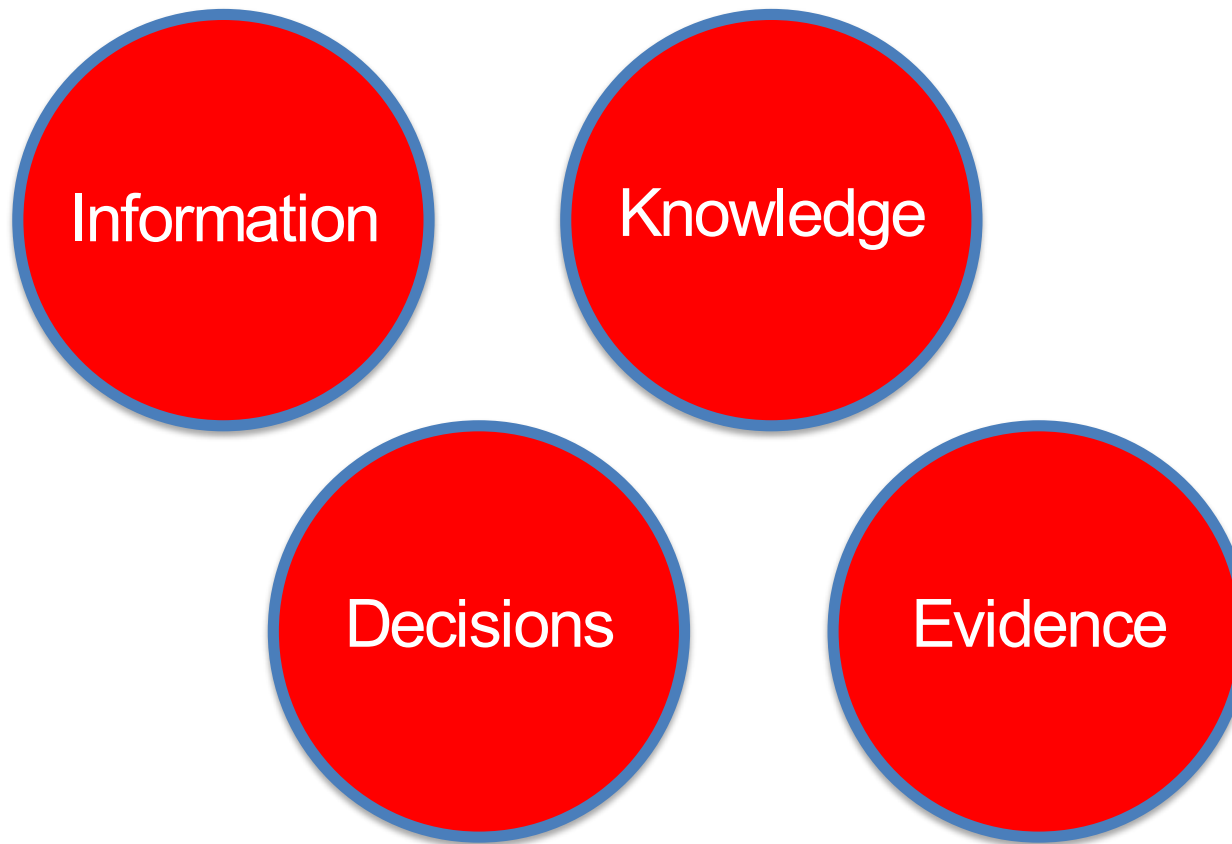


International Federation of Red Cross and Red Crescent Societies
Fédération internationale des Sociétés de la Croix-Rouge et du Croissant-Rouge
Federación Internacional de Sociedades de la Cruz Roja y de la Media Luna Roja
الاتحاد الدولي لجمعيات الصليب الأحمر والهلال الأحمر



International Federation of Red Cross and Red Crescent Societies
Fédération internationale des Sociétés de la Croix-Rouge et du Croissant-Rouge
Federación Internacional de Sociedades de la Cruz Roja y de la Media Luna Roja
الاتحاد الدولي لجمعيات الصليب الأحمر والهلال الأحمر

Data can lead to:



The logo for the Centre for Humdata is a white speech bubble shape on a blue background. The text "centre for humdata" is written in white, lowercase, sans-serif font inside the bubble. The bubble has a rectangular body with a small tail pointing downwards and to the left.

centre for humdata

The background of the slide is a solid blue color. Overlaid on this is a faint, white graphic of a globe. The globe is represented by a network of small dots (nodes) connected by thin lines, creating a mesh-like structure that covers the entire surface of the sphere. In the top-left corner, there is a white rectangular box with a thin border. Inside this box, the text "centre for humdata" is written in a lowercase, sans-serif font. A small white line extends from the bottom-left corner of the box, pointing towards the center of the slide.

centre for humdata

The mission of the Centre is to work with partners to increase the use and impact of data in the humanitarian sector.

Focus Areas for the Centre



Data Services



Data Policy



Data Literacy



Network
Engagement

centre for humdata



International Federation of Red Cross and Red Crescent Societies
Fédération internationale des Sociétés de la Croix-Rouge et du Croissant-Rouge
Federación Internacional de Sociedades de la Cruz Roja y de la Media Luna Roja
الاتحاد الدولي لجمعيات الصليب الأحمر والهلال الأحمر



Partners Engaged



International Federation of Red Cross and Red Crescent Societies
Fédération internationale des Sociétés de la Croix-Rouge et du Croissant-Rouge
Federación Internacional de Sociedades de la Cruz Roja y de la Media Luna Roja
الاتحاد الدولي لجمعيات الصليب الأحمر والهلال الأحمر



**The Humanitarian Data Exchange
is OCHA's open platform
for sharing humanitarian data.**

**Our objective is to make humanitarian data easy to
find and use for analysis.**



International Federation of Red Cross and Red Crescent Societies
Fédération internationale des Sociétés de la Croix-Rouge et du Croissant-Rouge
Federación Internacional de Sociedades de la Cruz Roja y de la Media Luna Roja
الاتحاد الدولي لجمعيات الصليب الأحمر والهلال الأحمر

What does HDX offer?

We simplify **data sharing**

We extend the impact of data

We tell the story of data

We help **standardize data**



International Federation of Red Cross and Red Crescent Societies
Fédération internationale des Sociétés de la Croix-Rouge et du Croissant-Rouge
Federación Internacional de Sociedades de la Cruz Roja y de la Media Luna Roja
الاتحاد الدولي لجمعيات الصليب الأحمر والهلال الأحمر

PLAYBOOK: SLIDEDECK 20



Simplify Data Sharing

 **Brendan McDonald**
@7pillers

Following

. @UNOSAT Launches Flood Portal To Maximize Impact Through Data Sharing | #GIS @humdata

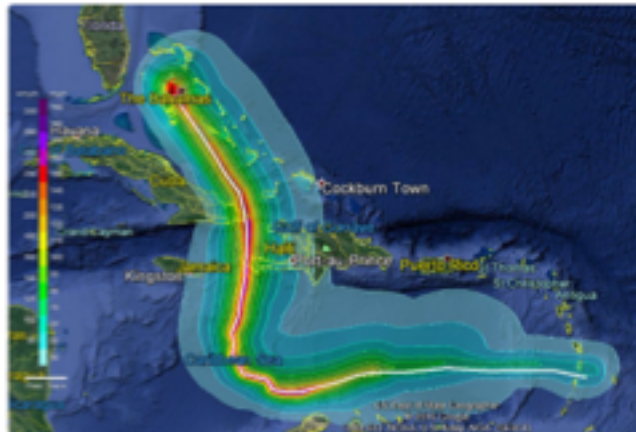
bit.ly/1VOSjvm




 **Kareem Ahmed**
@KareemD

Following

Thanks to @ucl TSR, Mark Saunders for sharing gust footprint data now on @humdata #HurricaneMatthew data.humdata.org/dataset/hurric ...



 **WFP VAM**
@WFPVAM

Following

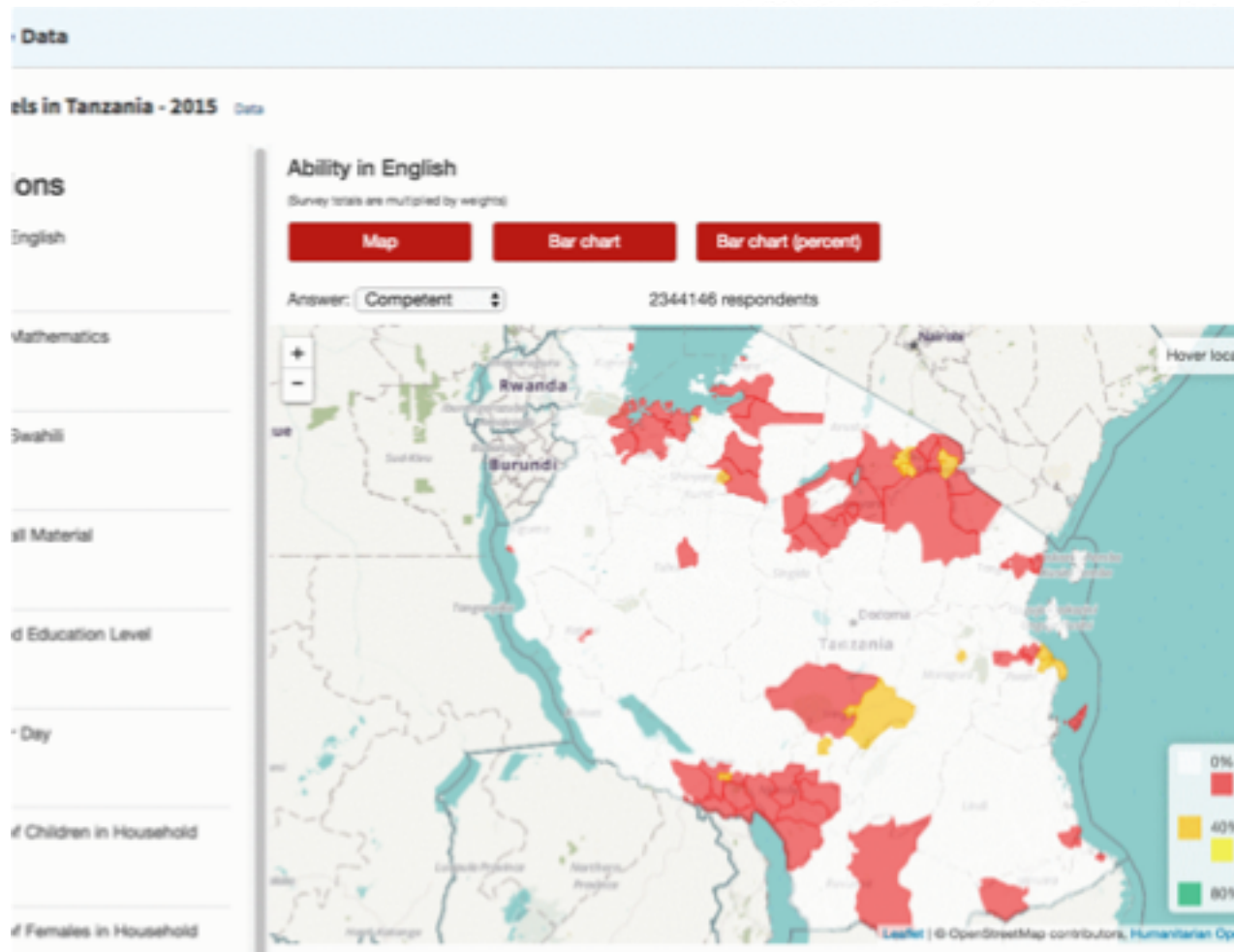
#humanitarian #data sharing: We're ready to share our #APIs & solutions for data validation so others can share their data with @humdata



International Federation of Red Cross and Red Crescent Societies
Fédération internationale des Sociétés de la Croix-Rouge et du Croissant-Rouge
Federación Internacional de Sociedades de la Cruz Roja y de la Media Luna Roja
الاتحاد الدولي لجمعيات الصليب الأحمر والهلال الأحمر



Tell the story of your dataset



International Federation of Red Cross and Red Crescent Societies
Fédération internationale des Sociétés de la Croix-Rouge et du Croissant-Rouge
Federación Internacional de Sociedades de la Cruz Roja y de la Media Luna Roja
الاتحاد الدولي لجمعيات الصليب الأحمر والهلال الأحمر

DATA PLAYBOOK: SLIDEDeck 20



Extend the impact of your data

Increase your data visibility

Reach a larger audience

Get users feedback

Allow your data to be combined with other sources



International Federation of Red Cross and Red Crescent Societies
Fédération internationale des Sociétés de la Croix-Rouge et du Croissant-Rouge
Federación Internacional de Sociedades de la Cruz Roja y de la Media Luna Roja
الاتحاد الدولي لجمعيات الصليب الأحمر والهلال الأحمر



Example Types of Data in HDX

Baseline Data

Population

Statistics

Geospatial Data

Infrastructure

FTS

HDX in figures

Over 288 organisations sharing relevant humanitarian data on HDX

More than 4,900 datasets shared on HDX

5170 users registered in HDX

Over 250,000 unique visitors

Humanitarian Exchange Language (HXL)

What is HXL?

HXL is a different kind of data standard, designed to improve information sharing during a humanitarian crisis without adding extra reporting burdens.

Adding HXL tags

Organisation	Cluster	District
#org	#sector	#adm1
Org A	WASH	Coast
Org B	Health	Mountains
Org C	Education	Coast

Add HXL tags between the last row of headers and the first row of data.

Use attributes like +code to refine tags.

If you need to create new tags, start them with #x_ (e.g. #x_violence).

Some suggested attributes

People	Dates	Impact
+f	+start	+killed
+m	+end	+injured
+i	+reported	+infected
+infants		+displaced
+children	Geography	+idps
+adolescents	+lat	+refugees
+adults	+lon	+incamp
+elderly	+bounds	+noncamp

Tag + attribute examples

#adm2+code	admin 2 p-code
#affected+f	females affected
#geo+bounds+url	link to shape file
#description+fr	French description
#meta+source	data source

Places

#region	multi-country region
#country	country name
#adm1	administrative
. #adm5	subdivisions
#adm1+code	admin level 1 p-code
#loc	place (camp, building, etc.)
#geo	geographical info
#geo+lat	latitude
#geo+lon	longitude

People and households

#affected	number affected
#inneed	number in need
#targeted	number targeted
#reached	number reached
#population	population category
#beneficiary	beneficiary category

Responses and other operations

#activity	project or activity name
#org	organisation name
#contact	contact info
#sector	sector or cluster name
#subsector	subsector name
#indicator	indicator name
#capacity	response capacity
#output	activity output
#operations	operation-related info

Crises and incidents

#crisis	crisis/emergency name
#cause	crisis or incident cause
#impact	crisis or incident impact
#severity	crisis or incident severity

Extras

#date	day or period
#status	e.g. active
#description	general text
#meta	general meta data

hxlstandard.org

HXL is a different kind of data standard, designed to improve information sharing during a humanitarian crisis without adding extra reporting burdens.

How it works:

Add a row to your columns for HXL tags based on the suggest attributes. This will 'convert' the data when uploaded to the Humanitarian Data Exchange.

Data is part of our Leadership



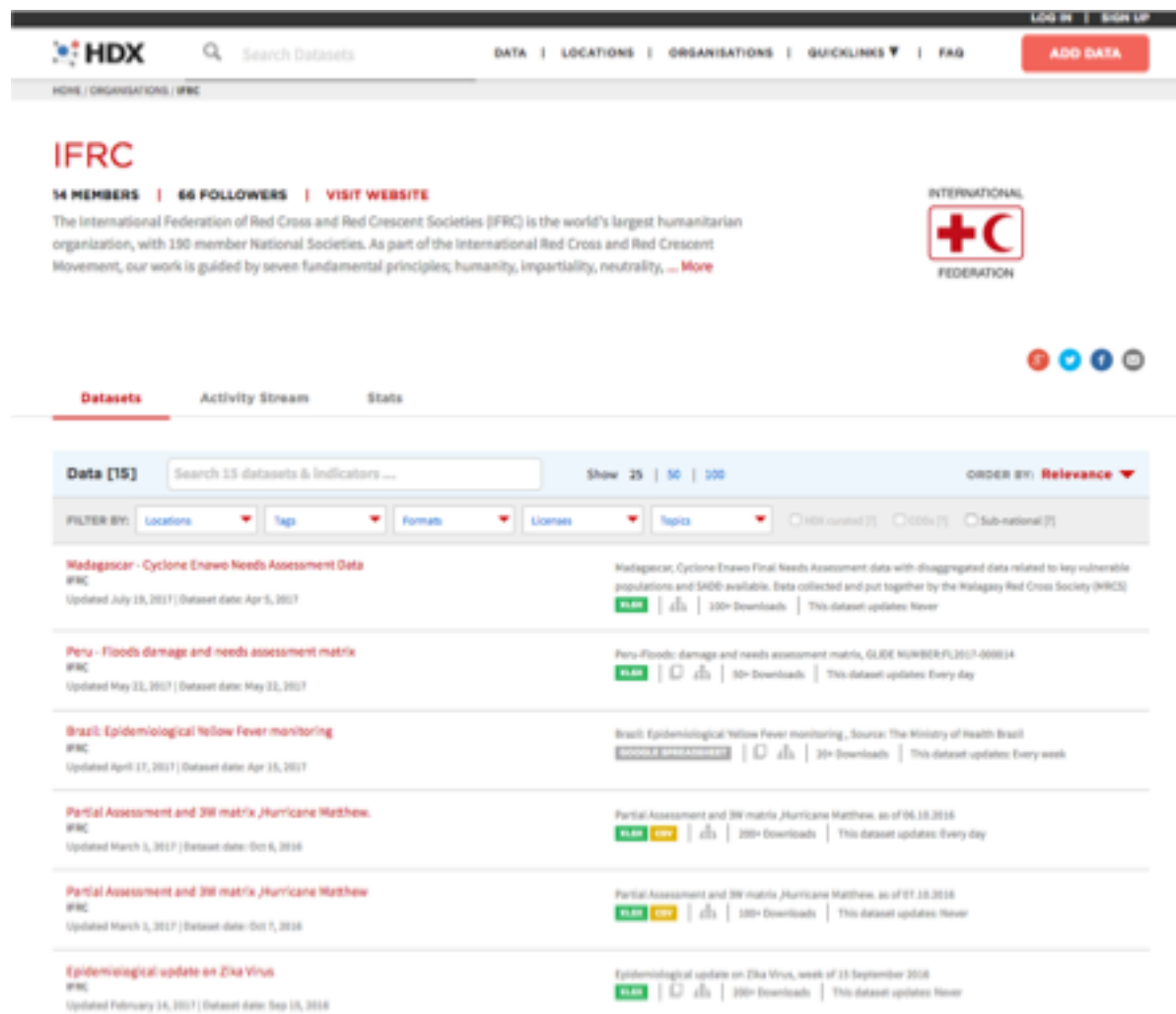
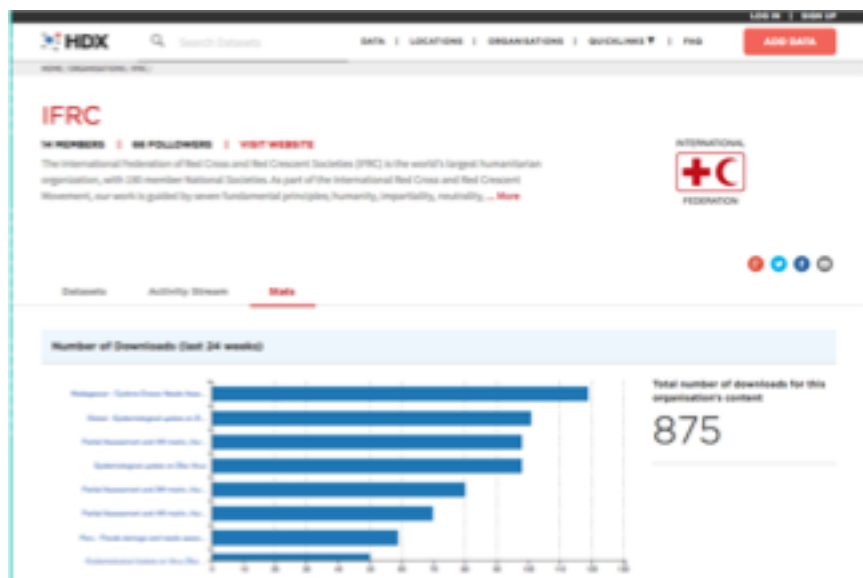
IFRC is the Secretariat, National Societies, and volunteers.

We aim to be a data-driven organization making evidence-based decisions. It is cited in our 2020 strategy.



International Federation of Red Cross and Red Crescent Societies
Fédération internationale des Sociétés de la Croix-Rouge et du Croissant-Rouge
Federación Internacional de Sociedades de la Cruz Roja y de la Media Luna Roja
الاتحاد الدولي لجمعيات الصليب الأحمر والهلال الأحمر

IFRC organization profile



National Societies Engaged

American Red Cross
Asia Pacific Disaster Resilience Centre
British Red Cross
Canadian Red Cross
Cote D'Ivoire Red Cross
Danish Red Cross
Finnish Red Cross
French Red Cross
Kenya Red Cross Society
Nepal Red Cross Society
Netherlands Red Cross
Senegal Red Cross



International Federation of Red Cross and Red Crescent Societies
Fédération internationale des Sociétés de la Croix-Rouge et du Croissant-Rouge
Federación Internacional de Sociedades de la Cruz Roja y de la Media Luna Roja
الاتحاد الدولي لجمعيات الصليب الأحمر والهلال الأحمر



Madagascar Cyclone Ewano Response Training

“Only through sharing accurate and timely data we can experience the real added value of Information Management”.

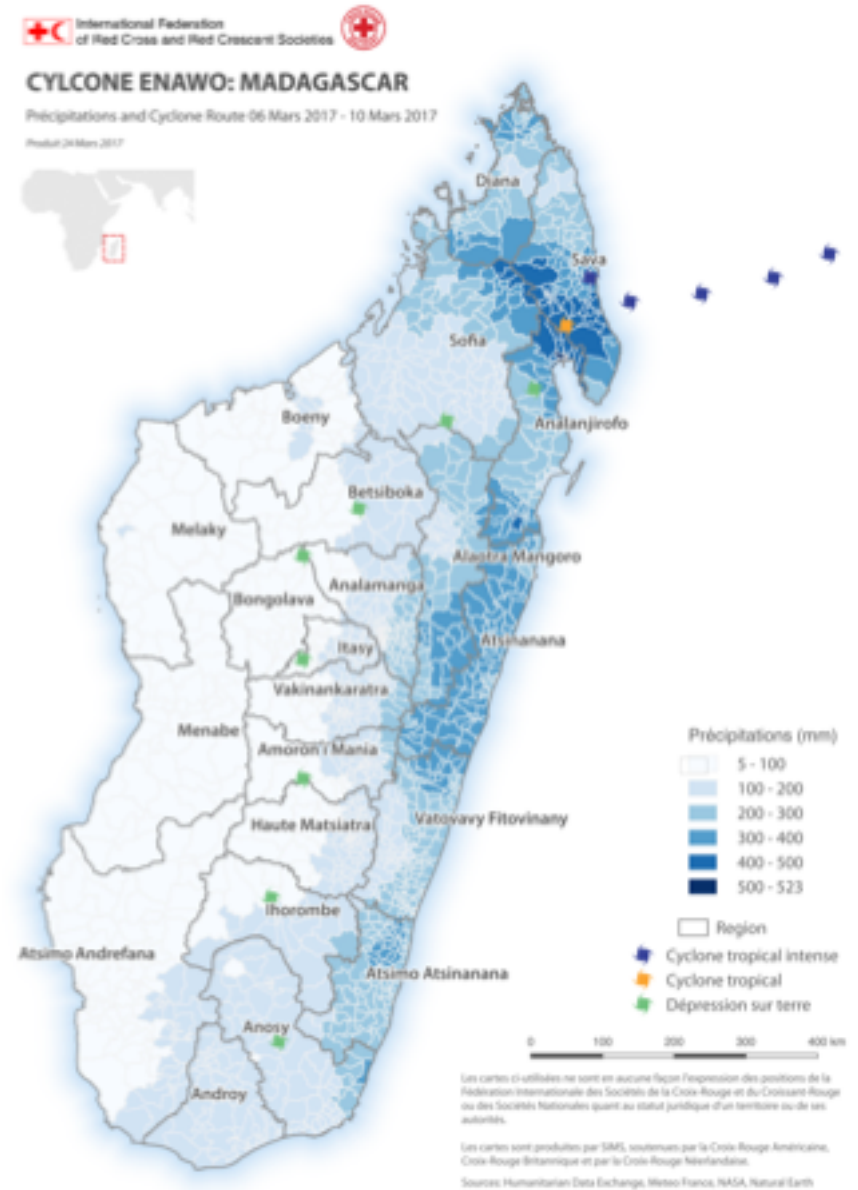
“I believe that sharing data with agreed upon standards is crucial to allow all actors engaged in a humanitarian response to easily access and analyse those datasets”.

“What is the added value of having high quality data, if we do not share it among the actors engaged in the response?”





الاتحاد الدولي لجمعيات الصليب الأحمر والهلال الأحمر

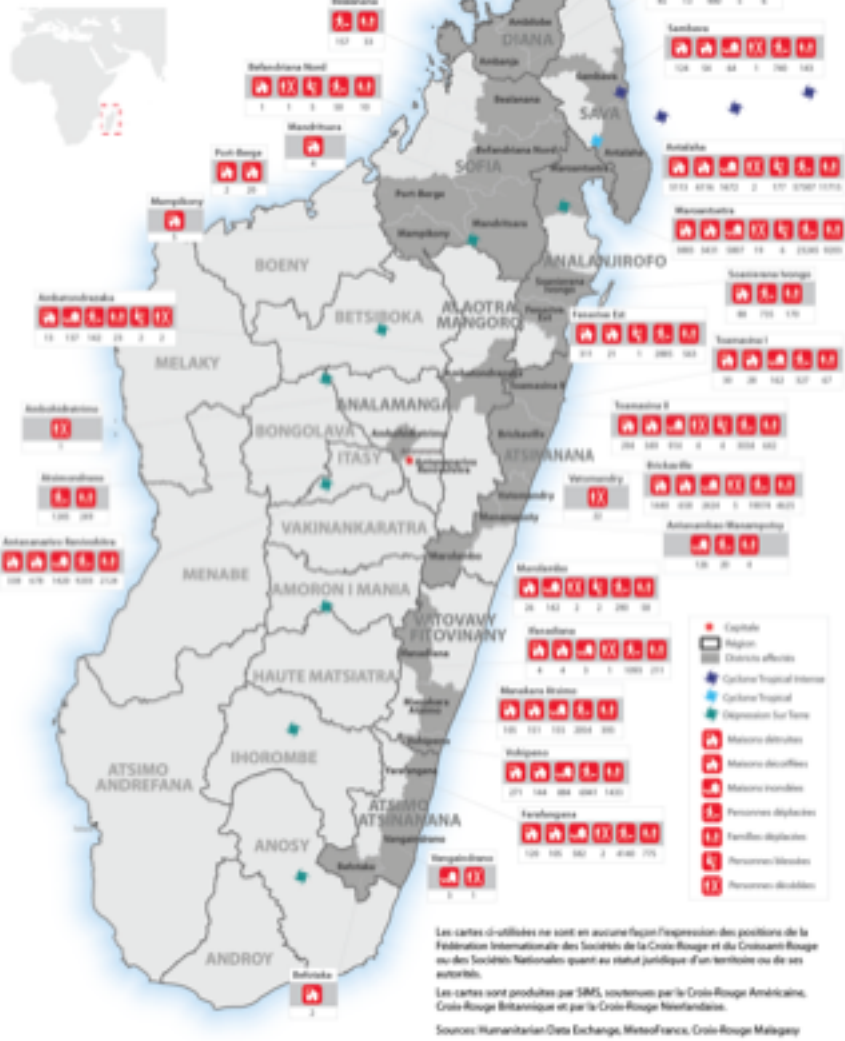




International Federation of Red Cross and Red Crescent Societies

CYCLONE ENAWO: MADAGASCAR

Rapport de Situation 05 Avril 2017
Produit 05 Avril 2017



Standardize the dataset with HXL tags

E	F	G	H	I	S	T
Pcode District	Communes	Pcode Communes	Fokontany	Pcode Fokontany	Moins de 05 ans	Enceinte
#adm2+code	#adm3+name	#adm3+code	#adm4+name	#adm4+code	cted+idps+individuals+inf+idps+individuals+inf	
MDG72711	Sambava Cu	MDG72711010	Ambodisatrana	MDG72711010011	86	19
MDG72711	Farahalana	MDG72711079	Farahalana	MDG72711079001	83	23
MDG72711	Farahalana	MDG72711079	Antohomaro	MDG72711079002	0	0
MDG72710	Intalaha Ambonivohitr	MDG72710010	Ambondrona	MDG72710010006	689	49
MDG72710	Intalaha Ambonivohitr	MDG72710010	Ankosalabe	MDG72710010012	539	56
MDG72710	Intalaha Ambonivohitr	MDG72710010	Ambatofasaka	MDG72710010002	220	43
MDG72710	Intalaha Ambonivohitr	MDG72710010	Antsonasoa	MDG72710010011	257	27
MDG72710	Intalaha Ambonivohitr	MDG72710010	Anjamangotroka	MDG72710010016	128	11
MDG72710	Intalaha Ambonivohitr	MDG72710010	Tanambao	MDG72710010001	236	10
MDG72710	Intalaha Ambonivohitr	MDG72710010	Tanambao/ampeno	MDG72710010003	114	14
MDG72710	Intalaha Ambonivohitr	MDG72710010	Ambaloratsy	MDG72710010008	144	6
MDG72710	Intalaha Ambonivohitr	MDG72710010	Maherfody	MDG72710010013	517	221
MDG72710	Intalaha Ambonivohitr	MDG72710010	Ambatomitraka	MDG72710010005	595	71
MDG72710	Intalaha Ambonivohitr	MDG72710010	Antsirandambo	MDG72710010007	118	19
MDG72710	Intalaha Ambonivohitr	MDG72710010	Ambodibonana	MDG72710010004	298	28
MDG72710	Ambinanifaho	MDG72710190	Tsarshonenana	MDG72710190005	108	21
MDG72710	Ambinanifaho	MDG72710190	Ambodimanga	MDG72710190002	41	28
MDG72710	Ambinanifaho	MDG72710190	Beanamalao	MDG72710190004	9	3
MDG72710	Ambinanifaho	MDG72710190	Ampenatsovana	MDG72710190003	132	12
MDG72710	Ambinanifaho	MDG72710190	Ambinanifaho	MDG72710190001	44	4
MDG72710	Lanjarivo	MDG72710230	Lanjarivo	MDG72710230001	7	4
MDG72710	Lanjarivo	MDG72710230	Analanaritsa	MDG72710230010	28	6
MDG72710	Lanjarivo	MDG72710230	Vohitrarivo	MDG72710230004	15	2
MDG72710	Lanjarivo	MDG72710230	Vohitsoa	MDG72710230009	9	0
MDG72710	Lanjarivo	MDG72710230	Sarahendrano	MDG72710230003	12	5



Fédération internationale des Sociétés de la Croix-Rouge et du Croissant-Rouge
Federación Internacional de Sociedades de la Cruz Roja y de la Media Luna Roja
الاتحاد الدولي لجمعيات الصليب الأحمر والهلال الأحمر

Madagascar - Cyclone Enawo Needs Assessment data.



69 | This dataset updates: Never

[Contact the contributor](#)

Quick Charts

[More actions ▼](#)

Sum of Personnes Décédées

69

Sum of Personnes Décédées grouped by Région



Link to Madagascar dashboard on Go: <http://ifrcgo.org/appeals/mdrmg012/>
International Federation of Red Cross and Red Crescent Societies
Fédération internationale des Sociétés de la Croix-Rouge et du Croissant-Rouge
Federación Internacional de Sociedades de la Cruz Roja y de la Media Luna Roja
الاتحاد الدولي لجمعيات الصليب الأحمر والهلال الأحمر

DATA PLAYBOOK: SLIDEDECK 20

American Red Cross West Africa Project

100+ Downloads | This dataset updates: Never

Contact the contributor



DOWNLOADS



RELATED SHOWCASES

There are no showcases for this dataset.

ACTIVITY

Matthew Gibb updated the dataset **American Red Cross West Africa Project** 1 month ago

HDX Data Manager updated the dataset **American Red Cross West Africa Project** 5 months ago

From February to October 2016, the American Red Cross and its local Red Cross partners completed an effort to extensively map areas within a 15-kilometer distance of the shared borders between Guinea, Liberia, and Sierra Leone.

The goal of this work was to create an open and comprehensive dataset of communities for West Africa and to ensure that decision makers, humanitarian workers, and community stakeholders are better aware of water, sanitation, health, and community resources before and during the next crisis.

To complete this mapping, the American Red Cross launched a mapping center in Guéckédou, Guinea, and used it as both a base of operations and a community engagement facility. Over 100 volunteers helped to complete a rapid assessment of the region, visiting over 7,000 communities by motorbike to complete a vulnerability survey with the village leader. Next, over 100 communities were selected for a round of detailed mapping, focusing on collecting the location and information about every water point, health facility and other community resource in the area. In addition, we led technical skills trainings and mapping events both in Guéckédou and across the region.

ALL DATA EXCEPT FOR THE OpenStreetMap EXTRACTS ARE LICENSED AS CC-BY 4.0

DATA AND RESOURCES

RedCross_WestAfrica_RapidAssessment_Survey.csv [7.8M]
Master file of American Red Cross West Africa project rapid assessment data. Includes latitude, ... [More](#)

PREVIEW



International Federation of Red Cross and Red Crescent Societies
Fédération internationale des Sociétés de la Croix-Rouge et du Croissant-Rouge
Federación Internacional de Sociedades de la Cruz Roja y de la Media Luna Roja
الاتحاد الدولي لجمعيات الصليب الأحمر والهلال الأحمر

DATA PLAYBOOK: SLIDEDECK 20



Bangladesh Floods - August 2017 - Flooding levels & Vulnerability



This dataset updates: Never

Contact the contributor



Ongoing Response

DOWNLOADS



RELATED SHOWCASES

There are no showcases for this dataset.

In this analysis we have combined several data sources around the floods in Bangladesh in August 2017.

Visualization

- See attached map for a map visualization of this analysis.
- See <http://bit.ly/2uFezKY> for a more interactive visualization in Carto.

Situation

Currently, in Bangladesh many water level measuring stations measure water levels that are above danger levels. This sets in triggers in motion for the partnership of the S3D Data Initiative and the Red Cross Climate Centre to get into action.

Indicators and sources



International Federation of Red Cross and Red Crescent Societies
Fédération internationale des Sociétés de la Croix-Rouge et du Croissant-Rouge
Federación Internacional de Sociedades de la Cruz Roja y de la Media Luna Roja
الاتحاد الدولي لجمعيات الصليب الأحمر والهلال الأحمر

DATA PLAYBOOK: SLIDEDECK 20



The Humanitarian Data Exchange has an FAQ with guides to help you get started: <https://data.humdata.org/faq>

We are here to help:

- Connect with your Regional IM Lead
- Talk with the SIMS team
- Reach out to the IFRC GO Team
- Talk with one of the National Societies already using HDX



International Federation of Red Cross and Red Crescent Societies
Fédération internationale des Sociétés de la Croix-Rouge et du Croissant-Rouge
Federación Internacional de Sociedades de la Cruz Roja y de la Media Luna Roja
الاتحاد الدولي لجمعيات الصليب الأحمر والهلال الأحمر



SHARING DATA: BASIC CONSIDERATIONS

- WHO: Need the data? What is their role?
- TYPES: What type of data is it? Is there personally identifiable information?
- LICENSE: Who owns or has access to the data? What is the license for data use?
- WHY: What is the purpose of sharing? Who can share the data?
- HOW: What is the format/ Can it be exported? Where will it be stored? How will you track usage/feedback?

-
- | | |
|---|--|
| <input type="checkbox"/> Consent | <input type="checkbox"/> Minimization (Only what you need) |
| <input type="checkbox"/> Aggregated? Disaggregated? | <input type="checkbox"/> Owner/ Data Controller |
| <input type="checkbox"/> License/ Format | <input type="checkbox"/> Feedback Loop: How Data Was Used |

THANK YOU

Heather Leson, Data Literacy Lead

Data Blog:

<http://media.ifrc.org/ifrc/theme/data/>

heather.leson@ifrc.org

@heatherleson About HDX - @humdata

skype: heatherleson