

HIGH SOCIAL CAPITAL



LOW SOCIAL CAPITAL



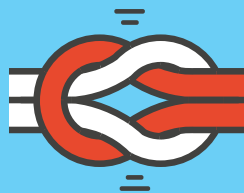
HIGH LEVELS OF TRUST

Between community members and between community members and institutions



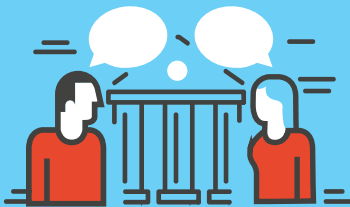
STRONG SOCIAL NETWORKS

Connectedness between community members offline and online



MUTUAL SUPPORT

Between community members, for example through care for the elderly, people with disabilities and the marginalized



HIGHER CIVIC ENGAGEMENT

For example in the form of volunteering or participation in community meetings



LOW LEVELS OF TRUST

And associated structural inequalities lead to wasted productive potential



WEAKER SOCIAL NETWORKS

Community members are less connected to each other and to institutions



ISOLATION OF INDIVIDUALS

Marginalized populations, such as ethnic and gender minorities, asylum seekers, and trafficked persons, live in conditions of exclusion or segregation



HIGHER VULNERABILITY TO DISASTERS

Communities with low social capital are less able to cope with and recover from disasters