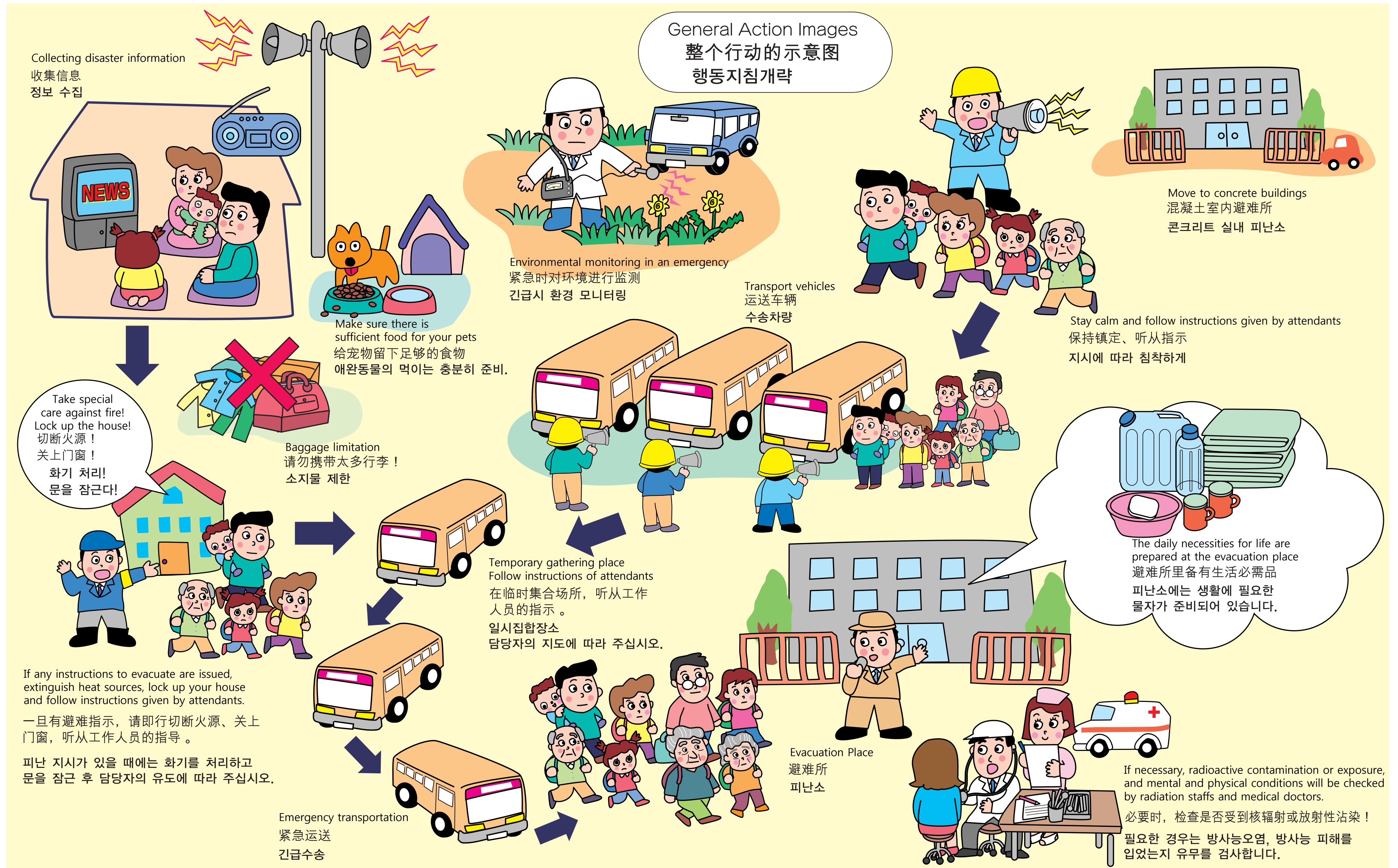


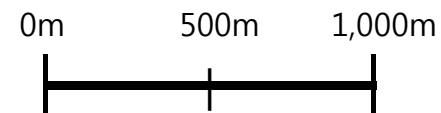
# What to do in a Nuclear Emergency

## 核紧急事故的应急措施 원자력 재해 발생시의 대처 방법





# TOKAI



撮影：2014年8月

## List of business institutions

### 事业所一覧 사업소 일람

- 1 The Japan Atomic Power Company  
日本原子力发电(株)  
일본원자력발전(주)
- 2 Japan Nuclear Cycle Development Institute  
核燃料循环利用开发研究所  
핵연료사이클개발기구
- 3 Japan Atomic Energy Research Institute  
日本原子力研究所  
일본원자력연구소
- 4 Nuclear Engineering Research Laboratory, Graduate School of Engineering, The University of Tokyo  
东京大学大学院工学系研究科附属原子力工学研究设施  
도쿄대학대학원 공학계연구과부속 원자력공학연구시설
- 5 Nuclear Material Control Center  
核材料管理中心  
(재)핵물질관리센터
- 6 Nuclear Fuel Industries ,Ltd.  
核燃料工业(株)  
원자연료공업(주)
- 7 Mitsubishi Nuclear Fuel Co.,Ltd.  
三菱核燃料(株)  
미쯔비시원자연료(주)
- 8 Nuclear Development Corporation  
核开发公司(株)  
뉴클리어디벨로프먼트(주)
- 9 Sumitomo Metal Mining Co.,Ltd.  
住友金属矿山(株)  
스미토모금속광산(주)
- 10 J C O Co.,Ltd. Tokai Plant  
(株) JCO 东海事业所  
(주)JCO 도카이 사업소
- 11 Sekisui medical Co.,Ltd.  
积水医疗有限公司  
세키스이 메디컬 주식회사
- 12 Japan Irradiation Service Co.,Ltd.  
日本辐照服务公司(株)  
일본조사서비스(주)

## List of main evacuation places

### 避难所一覧 피난소 일람

- |   |   |
|---|---|
| <ol style="list-style-type: none"><li>1 Shirakata Community Center<br/>白方社区中心<br/>시라카타 커뮤니티센터</li><li>2 Shirakata Elementary School<br/>白方小学<br/>시라카타초등학교</li><li>3 Masaki Community Center<br/>真崎社区中心<br/>마사키코미센</li><li>4 Muramatsu Elementary School<br/>村松小学<br/>무라마쓰초등학교</li><li>5 Muramatsu Community Center<br/>村松社区中心<br/>무라마쓰 커뮤니티센터</li><li>6 Tokai Junior High School<br/>东海初中<br/>도카이중학교</li><li>7 Ishigami Community Center<br/>石神社区中心<br/>이시가미 커뮤니티센터</li><li>8 Terunuma Elementary School<br/>照沼小学<br/>테루누마초등학교</li><li>9 Ishigami Elementary School<br/>石神小学<br/>이시가미초등학교</li><li>10 Nakamaru Elementary School<br/>中丸小学<br/>나카마루초등학교</li><li>11 Chuo Kominkan (central public hall)<br/>中央公民馆<br/>중앙공민관</li><li>12 Genden Sogo Kenshu Center (general training center)<br/>原电综合研修中心<br/>원전종합연수센터</li></ol> | <ol style="list-style-type: none"><li>13 Tokai High School<br/>东海高中<br/>도카이고등학교</li><li>14 Nakamaru Community Center<br/>中丸社区中心<br/>나카마루 커뮤니티센터</li><li>15 Sogo Taiikukan (general gymnasium)<br/>综合体育馆<br/>종합체육관</li><li>16 Tokai-Minami Junior High School<br/>东海南初中<br/>도카이미나미중학교</li><li>17 Funaishikawa Elementary School<br/>舟石川小学<br/>후나이시카와초등학교</li><li>18 Funaishikawa Community Center<br/>舟石川社区中心<br/>후나이시카와초등학교</li></ol> |
|---|---|

Emergency Planning Zone (EPZ) is divided into three zones.

Precautionary Action Zone (PAZ):

A zone within a radius of approximately 5km from nuclear facilities where in case of accident progression, precautionary actions such as immediate evacuation are taken shortly after specified events (severe accident) occur, and radiological protective measures are taken before the release of radioactive materials to the atmosphere. Prior distribution of stable iodine tablets at the time of evacuation is implemented and taking the tablet by instructions and medical doctors.

Urgent Protective action planning Zone (UPZ):

A zone within a radius of approximately 30km from nuclear facilities where urgent radiological protective actions such as evacuation and sheltering are planned considering the possibility of accident uncertainly and progression.

Plume Protection Planning Area (PPA):

An area where radiological protective measures are taken to avoid exposure effects on the thyroid gland caused by radioactive iodine when a plume ( a form of clouds with gaseous and particle materials ) contained radioactive materials passes over the area.

原子能灾害对策的重点区域(EPZ : Emergency Planning Zone )被分为以下3类。

PAZ:准备预防性防护措施的区域(Precautionary Action Zone)

这一区域是指假定发生了会迅速恶化的事故，在特定的严重灾害发生后，应立即实施避难等措施的区域，也即在放射性物质释放到环境中之前的阶段就准备防护措施的区域。对于PAZ，如果恶化到全面紧急状态时，应立刻实施预防性防护措施，比如即时避难等。在避难时，应根据指示服用事前分发的稳定碘剂。此区域指距离原子能设施约5公里的范围。

UPZ:准备紧急防护措施的区域(Urgent Protective action planning Zone)

这一区域是指在发生状况不明事故，或者可能急速恶化事故时，实施避难或室内退避等措施的区域。此区域指距离原子能设施约30公里的范围。

PPA:避免在辐射云通过时被辐射而实施防护措施的区域(Plume Protection Planning Area)

这一区域是指含有放射性物质的烟云(含有气态或粉尘物质的空气团)可能通过的区域。此区域内应避免放射性碘对甲状腺造成辐射。