

Technological & Biological Hazard Preparedness



MULTI-HAZARD APPROACH

The Red Cross Red Crescent National Societies addresses Technological & Biological Hazards through a multi-hazard approach.

Technological Hazards like industrial spills, transport accidents, factory explosions are a subset of man-made hazards.

Natural Hazards (NATECH) are climate related hazards that impact industrial areas, building structures, and could cause toxic waste.

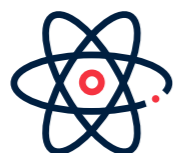
Biological Hazards include bacteria, viruses, fungi and parasites or parts thereof.



Chemical



Biological



Nuclear



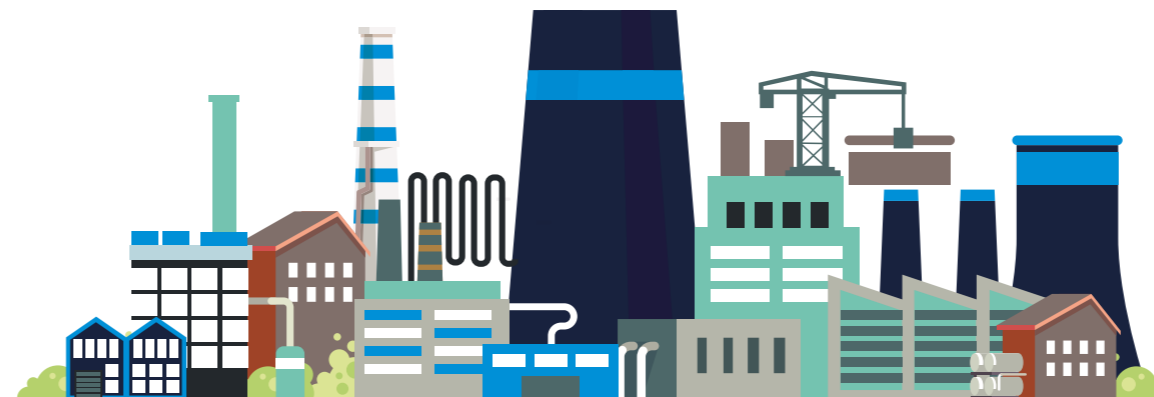
NaTech



Radiological



Environmental



OBJECTIVES

- Address humanitarian consequences
- Raise awareness in communities
- Increase expertise and knowledge
- Pursue greater international cooperation
- Advocate for humanitarian purposes
- Enhance humanitarian response

PREPAREDNESS



Protection
Use Personal Protective Equipment



Time
Spend the shortest amount of time in contaminated areas



Distance
Take greater distance from the source of harm and contamination



Shielding
Maintain significant physical barriers from hazardous materials

Contact details:

Martin Krottmayer, Sr. Officer Tech hazards preparedness
martin.krottmayer@ifrc.org

<https://media.ifrc.org/ifrc/techbiohazards/>

