



Environment
Canada

Environnement
Canada

Canada



An Issuing Authority Perspective on Using CAP

Norm Paulsen

Environment Canada

Oct/Nov 2018

CAP Workshop, Hong Kong

Environment Canada (EC) - an Issuer of *Alerts and Warnings*

- EC is an issuing Authority that has used CAP to convey our weather warnings since 2009
- We issue between **150 to 200 K** CAP *alert messages* each year on weather related events and hazards
- We use CAP in conjunction with the systems of many **known** partners and...
- We also know many **unknown** partners pick up our CAP *alert messages* from our **primary** partner's publicly available aggregation hub (NAADs)
- Both our partners and ourselves present our *alert messages* to various **audiences**, including the **general public**, **first responders**, **private clients** and more



Our Partners

- We have come to recognize the following **categorization** of our partners...
 - **Engaged:** Partners that generally want all the *warning* information that they can get their hands on to create their own value added **service** to clients
 - **Dis-Engaged:** Partners that generally don't want anything more than the minimum they need to pass the *warning* through – all because of some overriding policy that requires them to do so
 - Technically, there is a third partner type...partners **at large**. If they seek to engage us then the strategies discussed today will apply, but until then, they are just users and the relationship is basic CAP



Dealing with partner types

- CAP 1.2 **enables** us to service both types
- With the **dis-engaged** partner group we are often expected to work with the constraints of their systems
- With the **dis-engaged** partner group they tend to build to today with no plans for future change
- With the **engaged** partner group we work together to solve the data issues
- In EC CAP, we have a strategy to handle both types of partner in single CAP *alert messages*



Examples

- The rest of the presentation today will look at examples of **EC CAP** that **expands** on this discussion



First...Some Basics

- CAP has **elements** meant for the end audience to experience
 - These **elements** tell the end audience the story we want told (based on how we, the issuer, forms our *warnings*)
 - In the examples given these **elements** are marked in **yellow**
- CAP has **elements** meant for machine in the middle that does the automated processing
 - These **elements** direct the machine to automate a response to the value found there (based on some business policy)
 - In the examples given these **elements** are marked in **green**



<?xml version="1.0" encoding="UTF-8"?>

- <alert xmlns="urn:oasis:names:tc:emergency:cap:1.2">

<identifier>urn:oid:2.49.0.1.124.2378055368.2018</identifier>

<sender>cap-pac@canada.ca</sender>

<sent>2018-08-17T20:42:24-00:00</sent>

<status>Actual</status>

<msgType>Alert</msgType>

<source>Env. Can. - Can. Met. Ctr. - Montréal</source>

<scope>Public</scope>

<references/>

- <info>

<language>en-CA</language>

<category>Met</category>

<event>tornado</event>

<responseType>Shelter</responseType>

<responseType>Monitor</responseType>

<urgency>Immediate</urgency>

<severity>Extreme</severity>

<certainty>Observed</certainty>

<audience>general public</audience>

- <eventCode>

<valueName>profile:CAP-CP:Event:0.4</valueName>

<value>tornado</valueName>

</eventCode>

<effective>2018-08-17T20:42:24-00:00</effective>

<expires>2018-08-17T22:11:24-00:00</expires>

<senderName>Environment Canada</senderName>

<headline>tornado warning in effect</headline>

<description> At 2:42 p.m. CST, Environment Canada meteorologists are tracking a severe thunderstorm that is possibly producing a tornado. Damaging winds, large hail and locally intense rainfall are also possible. This potential tornado is located over the Minton area and is moving to the east at approximately 50 km/h towards the Lake Alma area. ### This is a dangerous and potentially life-threatening situation. Tornado warnings are issued when imminent or occurring thunderstorms are likely to produce or are producing tornadoes. </description>

<instruction> Take cover immediately, if threatening weather approaches. If you hear a roaring sound or see a funnel cloud, swirling debris near the ground, flying debris, or any threatening weather approaching, take shelter immediately. Go indoors to a room on the lowest floor, away from outside walls and windows, such as a basement, bathroom, stairwell or interior closet. Leave mobile homes, vehicles, tents, trailers and other temporary or free-standing shelter, and move to a strong building if you can. As a last resort, lie in a low spot and protect your head from flying debris. Lightning kills and injures Canadians every year. Remember, when thunder roars, go indoors! </instruction>

- <resource>

<resourceDesc>Broadcast Audio</resourceDesc>

<mimeType>audio/mpeg</mimeType>

<uri>https://s3.amazonaws.com/naadsttsfs-prod/2.49.0.1.124.2378055368.2018-en-CA.mp3</uri>

</resource>

- <area>

<areaDesc>R.M. of Surprise Valley including Minton and Regway</areaDesc>

<polygon>49.1733,-104.4097 48.9994,-104.4103 48.999,-104.8107 48.9991,-104.8107 49.0013,-104.8108 49.1734,-104.8238 49.2605,-104.8303 49.2606,-104.7454 49.2606,-104.5564 49.2605,-104.4731 49.2604,-104.4271 49.2604,-104.4271 49.2569,-104.4269 49.1733,-104.4215 49.1734,-104.4097 49.1733,-104.4097</polygon>

- <area>

<areaDesc>R.M. of Lake Alma including Lake Alma and Beaubier</areaDesc>

<polygon>49.2603,-104.4065 49.2603,-104.4005 49.2604,-104.4002 49.2603,-104.3933 49.2603,-104.3927 49.2603,-104.3917 49.2603,-104.3913 49.2603,-104.3892 49.2603,-104.3872 49.2603,-104.3868 49.2603,-104.382 49.2604,-104.3814 49.2603,-104.3812 49.2603,-104.3801 49.2603,-104.3794 49.2603,-104.3715 49.2603,-104.3709 49.2605,-104.2926 49.26,-104.2222 49.2601,-104.1809 49.2602,-104.1586 49.2603,-104.1359 49.2604,-104.0911 49.2604,-104.0686 49.2603,-104.0464 49.2603,-104.0239 49.174,-104.0189 49.0051,-104.0091 49.005,-104.0091 49.005,-104.0091 49.0005,-104.0089 49.0001,-104.0089 48.9998,-104.0089 48.9998,-104.0089 48.9998,-104.0091 48.9998,-104.0839 48.9999,-104.1288 48.9994,-104.41 48.9994,-104.4103 49.1733,-104.4097 49.1734,-104.4097 49.1733,-104.4215 49.2569,-104.4269 49.2604,-104.4271 49.2604,-104.4271 49.2604,-104.4268 49.2603,-104.4065</polygon>

</area>

</info>

+ <info>

</alert>

<instruction> Take cover immediately, if threatening or any threatening weather approaching, take shelter

<event> tornado</event> At 2:42 p.m. CST, Environment Canada

<headline> At 2:42 p.m. CST, Environment Canada meteorologists are tracking a severe thunderstorm that is possibly producing a tornado. Damaging winds, large hail and locally intense rainfall are also possible. This potential tornado is located over the Minton area and is moving to the east at approximately 50 km/h towards the Lake Alma area. ### This is a dangerous and potentially life-threatening situation. Tornado warnings are issued when imminent or occurring thunderstorms are likely to produce or are producing tornadoes. </description>

<instruction> Take cover immediately, if threatening weather approaches. If you hear a roaring sound or see a funnel cloud, swirling debris near the ground, flying debris, or any threatening weather approaching, take shelter immediately. Go indoors to a room on the lowest floor, away from outside walls and windows, such as a basement, bathroom, stairwell or interior closet. Leave mobile homes, vehicles, tents, trailers and other temporary or free-standing shelter, and move to a strong building if you can. As a last resort, lie in a low spot and protect your head from flying debris. Lightning kills and injures Canadians every year. Remember, when thunder roars, go indoors! </instruction>


```

<?xml version="1.0" encoding="UTF-8"?>
- <alert xmlns="urn:oasis:names:tc:emergency:cap:1.2">
  <identifier>urn:oid:2.49.0.1.124.2378055368.2018</identifier>
  <sender>cap-pac@canada.ca</sender>
  <sent>2018-08-17T20:42:24-00:00</sent>
  <status>Actual</status>
  <msgType>Alert</msgType>
  <source>Env. Can. - Can. Met. Ctr. - Montréal</source>
  <scope>Public</scope>
  <references/>
  <info>
    <language>en-CA</language>
    <category>Met</category>
    <event>tornado</event>
    <responseType>Shelter</responseType>
    <responseType>Monitor</responseType>
    <urgency>Immediate</urgency>
    <severity>Extreme</severity>
    <certainty>Observed</certainty>
    <audience>general public</audience>
  </info>
  <eventCode>
    <valueName>profile:CAP-CP:Event:0.4</valueName>
    <value>tornado</valueName>
  </eventCode>
  <effective>2018-08-17T20:42:24-00:00</effective>
  <expires>2018-08-17T22:11:24-00:00</expires>
  <senderName>Environment Canada</senderName>
  <headline>tornado warning in effect</headline>
  <description> At 2:42 p.m. CST, Environment Canada meteorologists are tracking a severe thunderstorm that is possibly producing a tornado. Damaging winds, large hail and locally intense rainfall are also possible. This potential tornado is located over the Minton area and is moving to the east at approximately 50 km/h towards the Lake Alma area. ### This is a dangerous and potentially life-threatening situation. Tornado warnings are issued when imminent or occurring thunderstorms are likely to produce or are producing tornadoes. </description>
  <instruction> Take cover immediately, if threatening weather approaches. If you hear a roaring sound or see a funnel cloud, swirling debris near the ground, flying debris, or any threatening weather approaching, take shelter immediately. Go indoors to a room on the lowest floor, away from outside walls and windows, such as a basement, bathroom, stairwell or interior closet. Leave mobile homes, vehicles, tents, trailers and other temporary or free-standing shelter, and move to a strong building if you can. As a last resort, lie in a low spot and protect your head from flying debris. Lightning kills and injures Canadians every year. Remember, when thunder roars. go indoors! </instruction>
  <resource>
    <resourceDesc>Broadcast Audio</resourceDesc>
    <mimeType>audio/mpeg</mimeType>
    <uri>https://s3.amazonaws.com/naadsttsfs-prod/2.49.0.1.124.2378055368.2018-en-CA.mp3</uri>
  </resource>
  <area>
    <areaDesc>R.M. of Surprise Valley including Minton and Regway</areaDesc>
    <polygon>49.1733,-104.4097 48.9994,-104.4103 48.999,-104.8107 48.9991,-104.8107 49.0013,-104.8108 49.1734,-104.8238 49.2605,-104.8303 49.2606,-104.7454 49.2606,-104.5564 49.2605,-104.4731 49.2604,-104.4271 49.2604,-104.4271 49.2569,-104.4269 49.1733,-104.4215 49.1734,-104.4097 49.1733,-104.4097</polygon>
  </area>
  <area>
    <areaDesc>R.M. of Lake Alma including Lake Alma and Beaubier</areaDesc>
    <polygon>49.2603,-104.4065 49.2603,-104.4005 49.2604,-104.4002 49.2603,-104.3933 49.2603,-104.3927 49.2603,-104.3917 49.2603,-104.3913 49.2603,-104.3892 49.2603,-104.3872 49.2603,-104.3868 49.2603,-104.382 49.2604,-104.3814 49.2603,-104.3812 49.2603,-104.3801 49.2603,-104.3794 49.2603,-104.3715 49.2603,-104.3709 49.2605,-104.2926 49.26,-104.2222 49.2601,-104.1809 49.2602,-104.1586 49.2603,-104.1359 49.2604,-104.0911 49.2604,-104.0686 49.2603,-104.0464 49.2603,-104.0239 49.174,-104.0189 49.0051,-104.0091 49.005,-104.0091 49.005,-104.0091 49.0005,-104.0089 49.0001,-104.0089 48.9998,-104.0089 48.9998,-104.0089 48.9998,-104.0091 48.9998,-104.0839 48.9999,-104.1288 48.9994,-104.41 48.9994,-104.4103 49.1733,-104.4097 49.1734,-104.4097 49.1733,-104.4215 49.2569,-104.4269 49.2604,-104.4271 49.2604,-104.4271 49.2604,-104.4268 49.2603,-104.4065</polygon>
  </area>
</info>
+ <info>
</alert>

```

<msgType>Alert</msgType>

<language>en-CA</language>

<severity>Extreme</severity>

Partner Constraints!

- Collectively, they come from a mixture of...
 - policy makers,
 - last mile distributors, and
 - equipment vendors
- These are often imposed back onto the issuing authority
 - size/length of message
 - language(s) of message
 - components of what goes into a message
 - character types allowed/disallowed
 - type of media (such as audio only for Radio)
- sometimes these conflict between partners



```
<?xml version="1.0" encoding="UTF-8"?>
```

```
<alert xmlns="urn:oasis:names:tc:emergency:cap:1.2">  
  <identifier>urn:oid:2.49.0.1.124.2378055368.2018</identifier>  
  <sender>cap-pac@canada.ca</sender>  
  <sent>2018-08-17T20:42:24-00:00</sent>  
  <status>Actual</status>  
  <msgType>Alert</msgType>  
  <source>Env. Can. - Can. Met. Ctr. - Montréal</source>  
  <scope>Public</scope>  
  <references/>
```

```
<info>  
  <language>en-CA</language>  
  <category>Met</category>  
  <event>tornado</event>  
  <responseType>Shelter</responseType>  
  <responseType>Monitor</responseType>  
  <urgency>Immediate</urgency>  
  <severity>Extreme</severity>  
  <certainty>Observed</certainty>  
  <audience>general public</audience>  
  <eventCode>  
    <valueName>profile:CAP-CP:Event:0.4</valueName>  
    <value>tornado</valueName>  
  </eventCode>  
  <effective>2018-08-17T20:42:24-00:00</effective>  
  <expires>2018-08-17T22:11:24-00:00</expires>  
  <senderName>Environment Canada</senderName>  
  <headline>tornado warning in effect</headline>
```

```
<description> At 2:42 p.m. CST, Environment Canada meteorologists are tracking a severe weather system that has the potential to produce  
and locally intense rainfall are also possible. This potential tornado is located over the Lake Alma area. ### This is a dangerous and potentially life-threatening situation.  
to produce or are producing tornadoes. </description>  
<instruction> Take cover immediately, if threatening weather approaches. If you hear a roaring sound or see a funnel cloud, swirling debris near the ground, flying debris,  
or any threatening weather approaching, take shelter immediately. Go indoors to a room on the lowest floor, away from outside walls and windows, such as a  
basement, bathroom, stairwell or interior closet. Leave mobile homes, vehicles, tents, trailers and other temporary or free-standing shelter, and move to a strong  
building if you can. As a last resort, lie in a low spot and protect your head from flying debris. Lightning kills and injures Canadians every year. Remember, when  
thunder roars, go indoors! </instruction>  
<resource>  
  <resourceDesc>Broadcast Audio</resourceDesc>  
  <mimeType>audio/mpeg</mimeType>  
  <uri>https://s3.amazonaws.com/naadsttsfs-prod/2.49.0.1.124.2378055368.2018-en-CA.mp3</uri>  
</resource>  
<area>  
  <areaDesc>R.M. of Surprise Valley including Minton and Regway</areaDesc>  
  <polygon>49.1733,-104.4097 48.9994,-104.4103 48.999,-104.8107 48.9991,-104.8107 49.0013,-104.8108 49.1734,-104.8238 49.2605,-104.8303 49.2606,-104.7454  
49.2606,-104.5564 49.2605,-104.4731 49.2604,-104.4271 49.2604,-104.4271 49.2569,-104.4269 49.1733,-104.4215 49.1734,-104.4097  
49.1733,-104.4097</polygon>  
</area>  
<area>  
  <areaDesc>R.M. of Lake Alma including Lake Alma and Beaubier</areaDesc>  
  <polygon>49.2603,-104.4065 49.2603,-104.4005 49.2604,-104.4002 49.2603,-104.3933 49.2603,-104.3927 49.2603,-104.3917 49.2603,-104.3913 49.2603,-104.3892  
49.2603,-104.3872 49.2603,-104.3868 49.2603,-104.382 49.2604,-104.3814 49.2603,-104.3812 49.2603,-104.3801 49.2603,-104.3794 49.2603,-104.3715  
49.2603,-104.3709 49.2605,-104.2926 49.26,-104.2222 49.2601,-104.1809 49.2602,-104.1586 49.2603,-104.1359 49.2604,-104.0911 49.2604,-104.0686  
49.2603,-104.0464 49.2603,-104.0239 49.174,-104.0189 49.0051,-104.0091 49.005,-104.0091 49.005,-104.0091 49.0005,-104.0089 49.0001,-104.0089  
48.9998,-104.0089 48.9998,-104.0089 48.9998,-104.0091 48.9998,-104.0839 48.9999,-104.1288 48.9994,-104.41 48.9994,-104.4103 49.1733,-104.4097  
49.1734,-104.4097 49.1733,-104.4215 49.2569,-104.4269 49.2604,-104.4271 49.2604,-104.4271 49.2604,-104.4268 49.2603,-104.4065</polygon>
```

Description has to come in different languages

Description has to be less than 150 characters

Audio must match the Description

<description> At 2:42 p.m. CST, Environment Canada and locally intense rainfall are also possible. This potential tornado is located over the Lake Alma area. ### This is a dangerous and potentially life-threatening situation. to produce or are producing tornadoes </description>

Description only ASCII

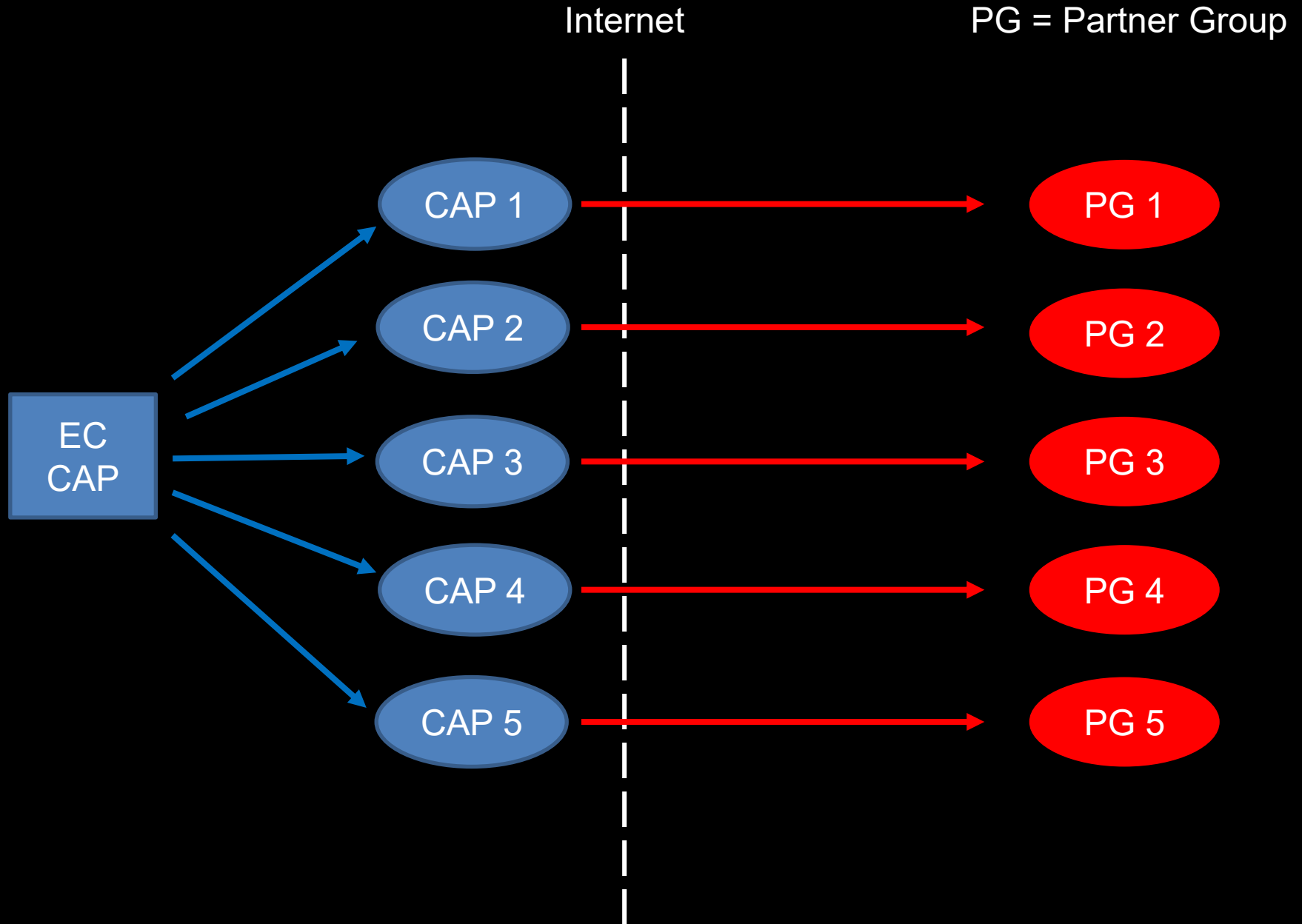
Description additional text

Options/Considerations?

- One constructed CAP message per partner?
- One constructed CAP message per partner group?
- One constructed CAP message for all partners?
- Language requirements all met in one CAP message?



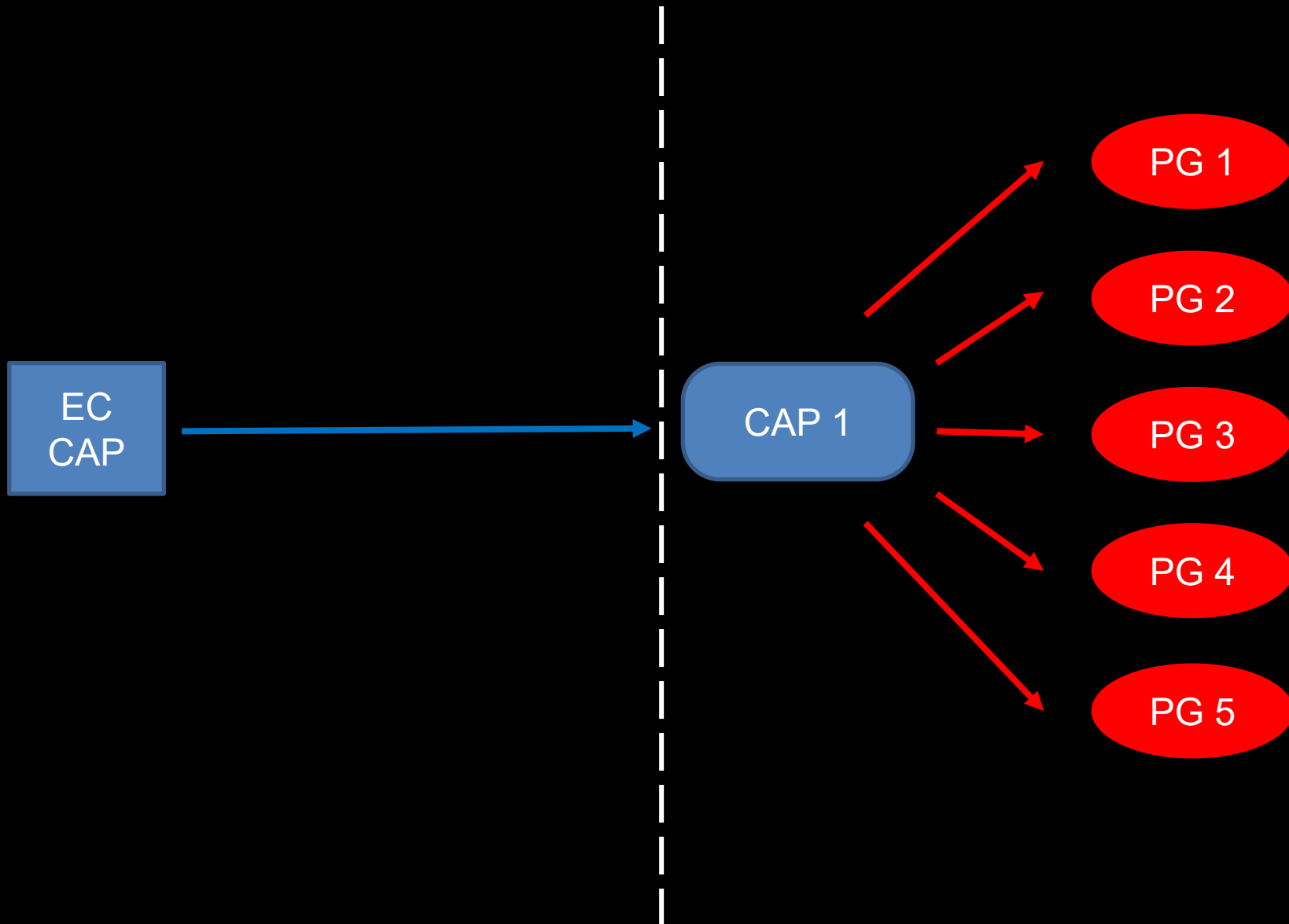
One CAP per Partner Group



One CAP for all Partners

Internet

PG = Partner Group



The “CAP Standard”

- CAP promotes itself as an all client, all media protocol
- CAP has customizable elements which are basically controlled extensions
- Controlled extensions are two part elements that use the <valueName> <value> pair construct
- These include
 - <eventCode> (specific to event codes)
 - <geocode> (specific to geocodes)
 - <parameter> (general in that they can be used for anything)



The EC case for one CAP for all

- If all partners get same CAP message file then
 - no one partner receives a file through a working delivery mechanism when another partner does not receive the file through a broken delivery mechanism
 - no one language based partner appears to get preferential treatment over the other
 - contact me for more on this
- We can manage our feeds with no dependencies on content
 - contact me for more on this
- This strategy leads to another strategy...



The Layer Strategy

- If a client **constraint / requirement** includes something to be customized for them, then we use a <parameter>
- In Canada, if one or more <parameter>s are used to service a client group, we refer to that as a **layer**
- Every **layer** in our CAP comes with an understanding with the client group that is being serviced, that they **own** the specifications for that layer
- We identify the owner, version and name of the element within the <valueName> part of the extension



EC CAP Currently has 5 layers identified by owner and version

Layer 1

SOREM:1.0

Layer 2

EC-MSC-SMC:1.0

Layer 3

WPAM:1.0

Layer 4

EC-MSC-SMC:1.1

Layer 5

SOREM:2.0

<?xml version="1.0" encoding="UTF-8"?>

<alert xmlns="urn:oasis:names:tc:emergency:cap:1.2">
 <identifier>urn:oid:2.49.0.1.124.2378055368.2018</identifier>
 <sender>cap-pac@canada.ca</sender>
 <sent>2018-08-17T20:42:24-00:00</sent>
 <status>Actual</status>
 <msgType>Alert</msgType>
 <source>Env. Can. - Can. Met. Ctr. - Montréal</source>
 <scope>Public</scope>
 <code>layer:SOREM:1.0</code>
 <references/>

<code>layer:SOREM:1.0</code>

- <parameter>

<valueName>layer:SOREM:1.0:Broadcast_Immediately</valueName>

<value>Yes</value> At 2:42 p.m. Central Standard Time Tuesday,

</parameter> . . .

</value>

</parameter>

<info>
 <language>en-CA</language>
 <category>Met</category>
 <event>tornado</event>
 <responseType>Shelter</responseType>
 <responseType>Monitor</responseType>
 <urgency>Immediate</urgency>
 <severity>Extreme</severity>
 <certainty>Observed</certainty>
 <audience>general public</audience>
</eventCode>
 <valueName>profile:CAP-CP:Event:0.4</valueName>
 <value>tornado</valueName>
</eventCode>
 <effective>2018-08-17T20:42:24-00:00</effective>
 <expires>2018-08-17T22:11:24-00:00</expires>
 <senderName>Environment Canada</senderName>
 <headline>tornado warning in effect</headline>
 <description> At 2:42 p.m. CST, Environment Canada meteorologists are tracking a severe thunderstorm that is possibly producing a tornado. Damaging winds, large hail and locally intense rainfall are also possible. This potential tornado is located over the Minton area and is moving to the east at approximately 50 km/h towards the Lake Alma area. ### This is a dangerous and potentially life-threatening situation. Tornado warnings are issued when imminent or occurring thunderstorms are likely to produce or are producing tornadoes. </description>
 <instruction> Take cover immediately, if threatening weather approaches. If you hear a roaring sound or see a funnel cloud, swirling debris near the ground, flying debris, or any threatening weather approaching, take shelter immediately. Go indoors to a room on the lowest floor, away from outside walls and windows, such as a basement, bathroom, stairwell or interior closet. Leave mobile homes, vehicles, tents, trailers and other temporary or free-standing shelter, and move to a strong building if you can. As a last resort, lie in a low spot and protect your head from flying debris. Lightning kills and injures Canadians every year. Remember, when thunder roars, go indoors! </instruction>
<parameter>
 <valueName>layer:SOREM:1.0:Broadcast_Immediately</valueName>
 <value>Yes</value>
</parameter>
<parameter>
 <valueName>layer:SOREM:1.0:Broadcast_Text</valueName>
 <value>At 2:42 p.m. Central Standard Time Tuesday, Environment Canada has issued a tornado warning for South Central and Southeastern Saskatchewan. Extra care and attention should be exercised in and around the following localities: Coronach, Bengough, Ceylon, Hardy, Big Beaver, Minton, Regway, Radville, Colgate, Goodwater, Lake Alma, Beaubier, Tribune and Oungre. Environment Canada meteorologists are tracking a severe thunderstorm that is possibly producing a tornado. Damaging winds, large hail and locally intense rainfall are also possible. Take cover immediately if threatening weather approaches. Please consult local media for more information. </value>
</parameter>
<resource>
 <resourceDesc> Broadcast Audio </resourceDesc>
 <mimeType>audio/mpeg </mimeType>
 <uri>https://s3.amazonaws.com/naadsttsfs-prod/2.49.0.1.124.2378055368.2018-en-CA.mp3</uri>
</resource>
<area>
 <areaDesc>R.M. of Surprise Valley including Minton and Regway</areaDesc>
 <polygon>49.1733,-104.4097 48.9994,-104.4103 48.999,-104.8107 48.9991,-104.8107 49.0013,-104.8108 49.1734,-104.8238 49.2605,-104.8303 49.2606,-104.7454 49.2606,-104.5564 49.2605,-104.4731 49.2604,-104.4271 49.2604,-104.4271 49.2569,-104.4269 49.1733,-104.4215 49.1734,-104.4097 49.1733,-104.4097</polygon>
</area>
<area>
 <areaDesc>R.M. of Lake Alma including Lake Alma and Beaubier</areaDesc>
 <polygon>49.2603,-104.4065 49.2603,-104.4005 49.2604,-104.4002 49.2603,-104.3933 49.2603,-104.3927 49.2603,-104.3917 49.2603,-104.3913 49.2603,-104.3892 49.2603,-104.3872 49.2603,-104.3868 49.2603,-104.382 49.2604,-104.3814 49.2603,-104.3812 49.2603,-104.3801 49.2603,-104.3794 49.2603,-104.3715 49.2603,-104.3709 49.2605,-104.2926 49.26,-104.2222 49.2601,-104.1809 49.2602,-104.1586 49.2603,-104.1359 49.2604,-104.0911 49.2604,-104.0686 49.2603,-104.0464 49.2603,-104.0239 49.174,-104.0189 49.0051,-104.0091 49.005,-104.0091 49.005,-104.0091 49.005,-104.0091 49.0005,-104.0089 49.0001,-104.0089 48.9998,-104.0089 48.9998,-104.0089 48.9998,-104.0091 48.9998,-104.0839 48.9999,-104.1288 48.9994,-104.41 48.9994,-104.4103 49.1733,-104.4097 49.1734,-104.4097 49.1733,-104.4215 49.2569,-104.4269 49.2604,-104.4271 49.2604,-104.4271 49.2604,-104.4268 49.2603,-104.4065</polygon>
</area>
</info>
<info>
</alert>

EMERGENCY ALERT

This is the Emergency Alert S

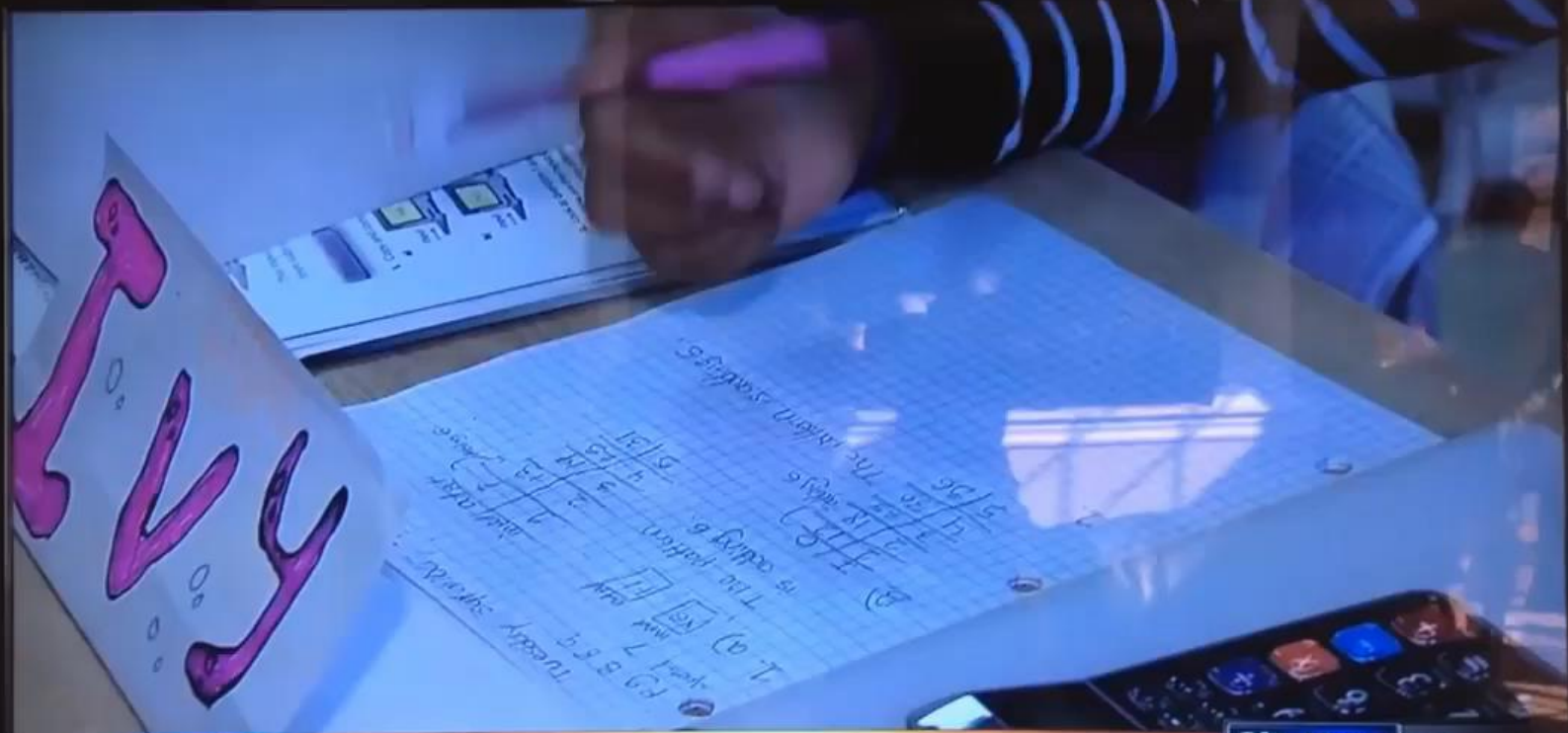
```

<?xml version="1.0" encoding="UTF-8"?>
- <alert xmlns="urn:oasis:names:tc:emergency:cap:1.2">
  <identifier>urn:oid:2.49.0.1.124.2378055368.2018</identifier>
  <sender>cap-pac@canada.ca</sender>
  <sent>2018-08-17T20:42:24-00:00</sent>
  <status>Actual</status>
  <msgType>Alert</msgType>
  <source>Env. Can. - Can. Met. Ctr. - Montréal</source>
  <scope>Public</scope>
  <references/>
- <info>
  <language>en-CA</language>
  <category>Met</category>
  <event>tornado</event>
  <responseType>Shelter</responseType>
  <responseType>Monitor</responseType>
  <urgency>Immediate</urgency>
  <severity>Extreme</severity>
  <certainty>Observed</certainty>
  <audience>general public</audience>
- <eventCode>
  <valueName>profile:CAP-CP:Event:0.4</valueName>
  <value>tornado</valueName>
</eventCode>
<effective>2018-08-17T20:42:24-00:00</effective>
<expires>2018-08-17T22:11:24-00:00</expires>
<senderName>Environment Canada</senderName>
<headline>tornado warning in effect</headline>
<description> At 2:42 p.m. CST, Environment Canada meteorologists are tracking a severe thunderstorm that is possibly producing a tornado. Damaging winds, large hail and locally intense rainfall are also possible. This potential tornado is located over the Minton area and is moving to the east at approximately 50 km/h towards the Lake Alma area. ### This is a dangerous and potentially life-threatening situation. Tornado warnings are issued when imminent or occurring thunderstorms are likely to produce or are producing tornadoes. </description>
<instruction> Take cover immediately, if threatening weather approaches. If you hear a roaring sound or see a funnel cloud, swirling debris near the ground, flying debris, or any threatening weather approaching, take shelter immediately. Go indoors to a room on the lowest floor, away from outside walls and windows, such as a basement, bathroom, stairwell or interior closet. Leave mobile homes, vehicles, tents, trailers and other temporary or free-standing shelter, and move to a strong building if you can. As a last resort, lie in a low spot and protect your head from flying debris. Lightning kills and injures Canadians every year. Remember, when thunder roars. go indoors! </instruction>
- <resource>
  <resourceDesc>Broadcast Audio</resourceDesc>
  <mimeType>audio/mpeg</mimeType>
  <uri>https://s3.amazonaws.com/naadsttsfs-prod/2.49.0.1.124.2378055368.2018-en-CA.mp3</uri>
</resource>
- <area>
  <areaDesc>R.M. of Surprise Valley including Minton and Regway</areaDesc>
  <polygon>49.1733,-104.4097 48.9994,-104.4103 48.999,-104.8107 48.9991,-104.8107 49.0013,-104.8108 49.1734,-104.8238 49.2605,-104.8303 49.2606,-104.7454 49.2606,-104.5564 49.2605,-104.4731 49.2604,-104.4271 49.2604,-104.4271 49.2569,-104.4269 49.1733,-104.4215 49.1734,-104.4097 49.1733,-104.4097</polygon>
- <area>
  <areaDesc>R.M. of Lake Alma including Lake Alma and Beaubier</areaDesc>
  <polygon>49.2603,-104.4065 49.2603,-104.4005 49.2604,-104.4002 49.2603,-104.3933 49.2603,-104.3927 49.2603,-104.3917 49.2603,-104.3913 49.2603,-104.3892 49.2603,-104.3872 49.2603,-104.3868 49.2603,-104.382 49.2604,-104.3814 49.2603,-104.3812 49.2603,-104.3801 49.2603,-104.3794 49.2603,-104.3715 49.2603,-104.3709 49.2605,-104.2926 49.26,-104.2222 49.2601,-104.1809 49.2602,-104.1586 49.2603,-104.1359 49.2604,-104.0911 49.2604,-104.0686 49.2603,-104.0464 49.2603,-104.0239 49.174,-104.0189 49.0051,-104.0091 49.005,-104.0091 49.005,-104.0091 49.0005,-104.0089 49.0001,-104.0089 48.9998,-104.0089 48.9998,-104.0089 48.9998,-104.0091 48.9998,-104.0839 48.9999,-104.1288 48.9994,-104.41 48.9994,-104.4103 49.1733,-104.4097 49.1734,-104.4097 49.1733,-104.4215 49.2569,-104.4269 49.2604,-104.4271 49.2604,-104.4271 49.2604,-104.4268 49.2603,-104.4065</polygon>
</area>
</info>
+ <info>
</alert>

```

-Doing the same thing without a Layer

-LMD has to meet the SOREM requirements themselves



NO REPORT CARDS IN PUBLIC ELEMENTARY SCHOOLS

CityNews .ca

5:37:48

27

Tornado Warning - Alert Ready Ontario

MCMLYRICS

SAMSUNG


```

<?xml version="1.0" encoding="UTF-8"?>
- <alert xmlns="urn:oasis:names:tc:emergency:cap:1.2">
  <identifier>urn:oid:2.49.0.1.124.2378055368.2018</identifier>
  <sender>cap-pac@canada.ca</sender>
  <sent>2018-08-17T20:42:24-00:00</sent>
  <status>Actual</status>
  <msgType>Alert</msgType>
  <source>Env. Can. - Can. Met. Ctr. - Montréal</source>
  <scope>Public</scope>
  <code>layer:SOREM:1.0</code>
  <references/>
- <info>
  <language>en-CA</language>
  <category>Met</category>
  <event>tornado</event>
  <responseType>Shelter</responseType>
  <responseType>Monitor</responseType>
  <urgency>Immediate</urgency>
  <severity>Extreme</severity>
  <certainty>Observed</certainty>
  <audience>general public</audience>
- <eventCode>
  <valueName>profile:CAP-CP:Event:0.4</valueName>
  <value>tornado</valueName>
</eventCode>
<effective>2018-08-17T20:42:24-00:00</effective>
<expires>2018-08-17T22:11:24-00:00</expires>
<senderName>Environment Canada</senderName>
<headline>tornado warning in effect</headline>
<description> At 2:42 p.m. CST, Environment Canada meteorologists are tracking a severe thunderstorm that is possibly producing a tornado. Damaging winds, large hail and locally intense rainfall are also possible. This potential tornado is located over the Minton area and is moving to the east at approximately 50 km/h towards the Lake Alma area. ### This is a dangerous and potentially life-threatening situation. Tornado warnings are issued when imminent or occurring thunderstorms are likely to produce or are producing tornadoes. </description>
<instruction> Take cover immediately, if threatening weather approaches. If you hear a roaring sound or see a funnel cloud, swirling debris near the ground, flying debris, or any threatening weather approaching, take shelter immediately. Go indoors to a room on the lowest floor, away from outside walls and windows, such as a basement, bathroom, stairwell or interior closet. Leave mobile homes, vehicles, tents, trailers and other temporary or free-standing shelter, and move to a strong building if you can. As a last resort, lie in a low spot and protect your head from flying debris. Lightning kills and injures Canadians every year. Remember, when thunder roars, go indoors! </instruction>
- <parameter>
  <valueName>layer:SOREM:1.0:Broadcast_Immediately</valueName>
  <value>Yes</value>
</parameter>
- <parameter>
  <valueName>layer:SOREM:1.0:Broadcast_Text</valueName>
  <value>At 2:42 p.m. Central Standard Time Tuesday, Environment Canada has issued a tornado warning for South Central and Southeastern Saskatchewan. Extra care and attention should be exercised in and around the following localities: Coronach, Bengough, Ceylon, Hardy, Big Beaver, Minton, Regway, Radville, Colgate, Goodwater, Lake Alma, Beaubier, Tribune and Oungre. Environment Canada meteorologists are tracking a severe thunderstorm that is possibly producing a tornado. Damaging winds, large hail and locally intense rainfall are also possible. Take cover immediately if threatening weather approaches. Please consult local media for more information. </value>
</parameter>
- <resource>
  <resourceDesc>Broadcast Audio</resourceDesc>
  <mimeType>audio/mpeg</mimeType>
  <uri>https://s3.amazonaws.com/naadsttsfs-prod/2.49.0.1.124.2378055368.2018-en-CA.mp3</uri>
</resource>
- <area>
  <areaDesc>R.M. of Surprise Valley including Minton and Regway</areaDesc>
  <polygon>49.1733,-104.4097 48.9994,-104.4103 48.999,-104.8107 48.9991,-104.8107 49.0013,-104.8108 49.1734,-104.8238 49.2605,-104.8303 49.2606,-104.7454 49.2606,-104.5564 49.2605,-104.4731 49.2604,-104.4271 49.2604,-104.4271 49.2569,-104.4269 49.1733,-104.4215 49.1734,-104.4097 49.1733,-104.4097</polygon>
- <area>
  <areaDesc>R.M. of Lake Alma including Lake Alma and Beaubier</areaDesc>
  <polygon>49.2603,-104.4065 49.2603,-104.4005 49.2604,-104.4002 49.2603,-104.3933 49.2603,-104.3927 49.2603,-104.3917 49.2603,-104.3913 49.2603,-104.3892 49.2603,-104.3872 49.2603,-104.3868 49.2603,-104.382 49.2604,-104.3814 49.2603,-104.3812 49.2603,-104.3801 49.2603,-104.3794 49.2603,-104.3715 49.2603,-104.3709 49.2605,-104.2926 49.26,-104.2222 49.2601,-104.1809 49.2602,-104.1586 49.2603,-104.1359 49.2604,-104.0911 49.2604,-104.0686 49.2603,-104.0464 49.2603,-104.0239 49.174,-104.0189 49.0051,-104.0091 49.005,-104.0091 49.005,-104.0091 49.005,-104.0091 49.0005,-104.0089 49.0001,-104.0089 48.9998,-104.0089 48.9998,-104.0089 48.9998,-104.0091 48.9998,-104.0839 48.9999,-104.1288 48.9994,-104.41 48.9994,-104.4103 49.1733,-104.4097 49.1734,-104.4097 49.1733,-104.4215 49.2569,-104.4269 49.2604,-104.4271 49.2604,-104.4271 49.2604,-104.4268 49.2603,-104.4065</polygon>
</area>
</info>
+ <info>
</alert>

```

-Doing the same thing with a <resource>

-LMD just has to look up the audio file

Q: Is a Layer the same as a Profile?

- No.
- A layer is a group of **extensions**
- A profile is a group of **constraints**
- What does that mean?



EC CAP has 1 profile identified by owner and version

Profile

CAP-CP:0.4

```

<?xml version="1.0" encoding="UTF-8"?>
- <alert xmlns="urn:oasis:names:tc:emergency:cap:1.2">
  <identifier>urn:oid:2.49.0.1.124.2378055368.2018</identifier>
  <sender>cap-pac@canada.ca</sender>
  <sent>2018-08-17T20:42:24-00:00</sent>
  <status>Actual</status>
  <msgType>Alert</msgType>
  <source>Env. Can. - Can. Met. Ctr. - Montréal</source>
  <scope>Public</scope>
  <code>profile:CAP-CP:0.4</code>
  <references/>
  <info>
    <language>en-CA</language>
    <category>Met</category>
    <event>tornado</event>
    <responseType>Shelter</responseType>
    <responseType>Monitor</responseType>
    <urgency>Immediate</urgency>
    <severity>Extreme</severity>
    <certainty>Observed</certainty>
    <audience>general public</audience>
  </eventCode>
    <valueName>profile:CAP-CP:Event:0.4</valueName>
    <value>tornado</value>
  </eventCode>
  <effective>2018-08-17T20:42:24-00:00</effective>
  <expires>2018-08-17T22:11:24-00:00</expires>
  <senderName>Environment Canada</senderName>
  <headline>tornado warning in effect</headline>
  <description> At 2:42 p.m. CST, Environment Canada meteorologists are tracking a severe thunderstorm that is possibly producing a tornado. Damaging winds, large hail and locally intense rainfall are also possible. This potential tornado is located over the Minton area and is moving to the east at approximately 50 km/h towards the Lake Alma area. ### This is a dangerous and potentially life-threatening situation. Tornado warnings are issued when imminent or occurring thunderstorms are likely to produce or are producing tornadoes. </description>
  <instruction> Take cover immediately, if threatening weather approaches. If you hear a roaring sound or see a funnel cloud, swirling debris near the ground, flying debris, or any threatening weather approaching, take shelter immediately. Go indoors to a room on the lowest floor, away from outside walls and windows, such as a basement, bathroom, stairwell or interior closet. Leave mobile homes, vehicles, tents, trailers and other temporary or free-standing shelter, and move to a strong building if you can. As a last resort, lie in a low spot and protect your head from flying debris. Lightning kills and injures Canadians every year. Remember, when thunder roars. no indoors! </instruction>
  <resource>
    <resourceDesc>Broadcast Audio</resourceDesc>
    <mimeType>audio/mpeg</mimeType>
    <uri>https://s3.amazonaws.com/naadsttsfs-prod/2.49.0.1.124.2378055368.2018-en-CA.mp3</uri>
  </resource>
  <area>
    <areaDesc>R.M. of Surprise Valley including Minton and Regway</areaDesc>
    <polygon>49.1733,-104.4097 48.9994,-104.4103 48.999,-104.8107 48.9991,-104.8107 49.0013,-104.8108 49.1734,-104.8238 49.2605,-104.8303 49.2606,-104.7454 49.2606,-104.5564 49.2605,-104.4731 49.2604,-104.4271 49.2604,-104.4271 49.2569,-104.4269 49.1733,-104.4215 49.1734,-104.4097 49.1733,-104.4097</polygon>
  </area>
  <area>
    <areaDesc>R.M. of Lake Alma including Lake Alma and Beaubier</areaDesc>
    <polygon>49.2603,-104.4065 49.2603,-104.4005 49.2604,-104.4002 49.2603,-104.3933 49.2603,-104.3927 49.2603,-104.3917 49.2603,-104.3913 49.2603,-104.3892 49.2603,-104.3872 49.2603,-104.3868 49.2603,-104.382 49.2604,-104.3814 49.2603,-104.3812 49.2603,-104.3801 49.2603,-104.3794 49.2603,-104.3715 49.2603,-104.3709 49.2605,-104.2926 49.26,-104.2222 49.2601,-104.1809 49.2602,-104.1586 49.2603,-104.1359 49.2604,-104.0911 49.2604,-104.0686 49.2603,-104.0464 49.2603,-104.0239 49.174,-104.0189 49.0051,-104.0091 49.005,-104.0091 49.005,-104.0091 49.005,-104.0089 49.0001,-104.0089 48.9998,-104.0089 48.9998,-104.0089 48.9998,-104.0091 48.9998,-104.0839 48.9999,-104.1288 48.9994,-104.41 48.9994,-104.4103 49.1733,-104.4097 49.1734,-104.4097 49.1733,-104.4215 49.2569,-104.4269 49.2604,-104.4271 49.2604,-104.4271 49.2604,-104.4268 49.2603,-104.4065</polygon>
  </area>
</info>
+ <info>
</alert>

```

<code>profile:CAP-CP:0.4</code>

- <eventCode>en-CA</eventCode>
 <valueName>profile:CAP-CP:Event:0.4</valueName>
 <value>tornado</value>
 </eventCode>

Profile and Layers only look similar

- They use both **machine** and **audience** elements
- In EC we also use the **<code>** element as a courtesy for machines that are programmed to identify or filter on **Profiles** and/or **Layers** in an EC CAP message.



```

<?xml version="1.0" encoding="UTF-8"?>
- <alert xmlns="urn:oasis:names:tc:emergency:cap:1.2">
  <identifier>urn:oid:2.49.0.1.124.2378055368.2018</identifier>
  <sender>cap-pac@canada.ca</sender>
  <sent>2018-08-17T20:42:24-00:00</sent>
  <status>Actual</status>
  <msgType>Alert</msgType>
  <source>Env. Can. - Can. Met. Ctr. - Montréal</source>
  <scope>Public</scope>
  <code>profile:CAP-CP-04</code>
  <references/>
- <info>
  <language>en-CA</language>
  <category>Met</category>
  <event>tornado</event>
  <responseType>Shelter</responseType>
  <responseType>Monitor</responseType>
  <urgency>Immediate</urgency>
  <severity>Extreme</severity>
  <certainty>Observed</certainty>
  <audience>general public</audience>
  <eventCode>
    <valueName>profile:CAP-CP-Event04<valueName>
    <value>tornado</value>
  </eventCode>
  <effective>2018-08-17T20:42:24-00:00</effective>
  <expires>2018-08-17T22:11:24-00:00</expires>
  <senderName>Environment Canada</senderName>
  <headline>tornado warning in effect</headline>
  <description> At 2:42 p.m. CST, Environment Canada meteorologists are tracking a severe thunderstorm that is possibly producing a tornado. Damaging winds, large hail and locally intense rainfall are also possible. This potential tornado is located over the Minton area and is moving to the east at approximately 50 km/h towards the Lake Alma area. ### This is a dangerous and potentially life-threatening situation. Tornado warnings are issued when imminent or occurring thunderstorms are likely to produce or are producing tornadoes. </description>
  <instruction> Take cover immediately, if threatening weather approaches. If you hear a roaring sound or see a funnel cloud, swirling debris near the ground, flying debris, or any threatening weather approaching, take shelter immediately. Go indoors to a room on the lowest floor, away from outside walls and windows, such as a basement, bathroom, stairwell or interior closet. Leave mobile homes, vehicles, tents, trailers and other temporary or free-standing shelter, and move to a strong building if you can. As a last resort, lie in a low spot and protect your head from flying debris. Lightning kills and injures Canadians every year. Remember, when thunder roars. no indoors! </instruction>
- <resource>
  <resourceDesc>Broadcast Audio</resourceDesc>
  <mimeType>audio/mpeg</mimeType>
  <uri>https://s3.amazonaws.com/naadsttsfs-prod/2.49.0.1.124.2378055368.2018-en-CA.mp3</uri>
</resource>
- <area>
  <areaDesc>R.M. of Surprise Valley including Minton and Regway</areaDesc>
  <polygon>49.1733,-104.4097 48.9994,-104.4103 48.999,-104.8107 48.9991,-104.8107 49.0013,-104.8108 49.1734,-104.8238 49.2605,-104.8303 49.2606,-104.7454 49.2606,-104.5564 49.2605,-104.4731 49.2604,-104.4271 49.2604,-104.4271 49.2569,-104.4269 49.1733,-104.4215 49.1734,-104.4097 49.1733,-104.4097</polygon>
- <area>
  <areaDesc>R.M. of Lake Alma including Lake Alma and Beaubier</areaDesc>
  <polygon>49.2603,-104.4065 49.2603,-104.4005 49.2604,-104.4002 49.2603,-104.3933 49.2603,-104.3927 49.2603,-104.3917 49.2603,-104.3913 49.2603,-104.3892 49.2603,-104.3872 49.2603,-104.3868 49.2603,-104.382 49.2604,-104.3814 49.2603,-104.3812 49.2603,-104.3801 49.2603,-104.3794 49.2603,-104.3715 49.2603,-104.3709 49.2605,-104.2926 49.26,-104.2222 49.2601,-104.1809 49.2602,-104.1586 49.2603,-104.1359 49.2604,-104.0911 49.2604,-104.0686 49.2603,-104.0464 49.2603,-104.0239 49.174,-104.0189 49.0051,-104.0091 49.005,-104.0091 49.005,-104.0091 49.0005,-104.0089 49.0001,-104.0089 48.9998,-104.0089 48.9998,-104.0089 48.9998,-104.0091 48.9998,-104.0839 48.9999,-104.1288 48.9994,-104.41 48.9994,-104.4103 49.1733,-104.4097 49.1734,-104.4097 49.1733,-104.4215 49.2569,-104.4269 49.2604,-104.4271 49.2604,-104.4271 49.2604,-104.4268 49.2603,-104.4065</polygon>
</area>
</info>
+ <info>
</alert>

```



```

<?xml version="1.0" encoding="UTF-8"?>
<alert xmlns="urn:oasis:names:tc:emergency:cap:1.2">
  <identifier>urn:oid:2.49.0.1.124.2378055368.2018</identifier>
  <sender>cap-pac@canada.ca</sender>
  <sent>2018-08-17T20:42:24-00:00</sent>
  <status>Actual</status>
  <msgType>Alert</msgType>
  <source>Env. Can. - Can. Met. Ctr. - Montréal</source>
  <scope>Public</scope>
  <code>layerSOREM1.0</code>
  <references/>
  <info>
    <language>en-CA</language>
    <category>Met</category>
    <event>tornado</event>
    <responseType>Shelter</responseType>
    <responseType>Monitor</responseType>
    <urgency>Immediate</urgency>
    <severity>Extreme</severity>
    <certainty>Observed</certainty>
    <audience>general public</audience>
  </info>
  <eventCode>
    <valueName>profile:CAP-CP:Event:0.4</valueName>
    <value>tornado</value>
  </eventCode>
  <effective>2018-08-17T20:42:24-00:00</effective>
  <expires>2018-08-17T22:11:24-00:00</expires>
  <senderName>Environment Canada</senderName>
  <headline>tornado warning in effect</headline>
  <description>At 2:42 p.m. CST, Environment Canada meteorologists are tracking a severe thunderstorm that is possibly producing a tornado. Damaging winds, large hail and locally intense rainfall are also possible. This potential tornado is located over the Minton area and is moving to the east at approximately 50 km/h towards the Lake Alma area. ### This is a dangerous and potentially life-threatening situation. Tornado warnings are issued when imminent or occurring thunderstorms are likely to produce or are producing tornadoes.
  </description>
  <instruction>Take cover immediately, if threatening weather approaches. If you hear a roaring sound or see a funnel cloud, swirling debris near the ground, flying debris, or any threatening weather approaching, take shelter immediately. Go indoors to a room on the lowest floor, away from outside walls and windows, such as a basement, bathroom, stairwell or interior closet. Leave mobile homes, vehicles, tents, trailers and other temporary or free-standing shelter, and move to a strong building if you can. As a last resort, lie in a low spot and protect your head from flying debris. Lightning kills and injures Canadians every year. Remember, when thunder roars, go indoors!</instruction>
  <parameter>
    <valueName>layer:SOREM1.0:Broadcast_Immediately</valueName>
    <value>Yes</value>
  </parameter>
  <parameter>
    <valueName>layerSOREM1.0:Broadcast_Text</valueName>
    <value>At 2:42 p.m. Central Standard Time Tuesday, Environment Canada has issued a tornado warning for South Central and Southeastern Saskatchewan. Extra care and attention should be exercised in and around the following localities: Coronach, Bengough, Ceylon, Hardy, Big Beaver, Minton, Regway, Radville, Colgate, Goodwater, Lake Alma, Beaubier, Tribune and Oungre. Environment Canada meteorologists are tracking a severe thunderstorm that is possibly producing a tornado. Damaging winds, large hail and locally intense rainfall are also possible. Take cover immediately if threatening weather approaches. Please consult local media for more information.</value>
  </parameter>
  <resource>
    <resourceDesc>Broadcast Audio</resourceDesc>
    <mimeType>audio/mpeg</mimeType>
    <uri>https://s3.amazonaws.com/naadsttsfs-prod/2.49.0.1.124.2378055368.2018-en-CA.mp3</uri>
  </resource>
  <area>
    <areaDesc>R.M. of Surprise Valley including Minton and Regway</areaDesc>
    <polygon>49.1733,-104.4097 48.9994,-104.4103 48.999,-104.8107 48.9991,-104.8107 49.0013,-104.8108 49.1734,-104.8238 49.2605,-104.8303 49.2606,-104.7454 49.2606,-104.5564 49.2605,-104.4731 49.2604,-104.4271 49.2604,-104.4271 49.2569,-104.4269 49.1733,-104.4215 49.1734,-104.4097 49.1733,-104.4097</polygon>
  </area>
  <area>
    <areaDesc>R.M. of Lake Alma including Lake Alma and Beaubier</areaDesc>
    <polygon>49.2603,-104.4065 49.2603,-104.4005 49.2604,-104.4002 49.2603,-104.3933 49.2603,-104.3927 49.2603,-104.3917 49.2603,-104.3913 49.2603,-104.3892 49.2603,-104.3872 49.2603,-104.3868 49.2603,-104.382 49.2604,-104.3814 49.2603,-104.3812 49.2603,-104.3801 49.2603,-104.3794 49.2603,-104.3715 49.2603,-104.3709 49.2605,-104.2926 49.26,-104.2222 49.2601,-104.1809 49.2602,-104.1586 49.2603,-104.1359 49.2604,-104.0911 49.2604,-104.0686 49.2603,-104.0464 49.2603,-104.0239 49.174,-104.0189 49.0051,-104.0091 49.005,-104.0091 49.005,-104.0091 49.005,-104.0091 49.0005,-104.0089 49.0001,-104.0089 48.9998,-104.0089 48.9998,-104.0089 48.9998,-104.0091 48.9998,-104.0839 48.9999,-104.1288 48.9994,-104.41 48.9994,-104.4103 49.1733,-104.4097 49.1734,-104.4097 49.1733,-104.4215 49.2569,-104.4269 49.2604,-104.4271 49.2604,-104.4271 49.2604,-104.4268 49.2603,-104.4065</polygon>
  </area>
</info>
+ <info>
</alert>

```

The Canada case for Layers and Profiles

- With layers we can
 - manage **engaged** or **disengaged** clients in our CAP using existing CAP elements
 - apply partner group constraints to the layer only
 - accommodate new partners without having to resolve change issues with existing partners
 - show engaged partners all the layers
 - show engaged partners who owns the layer
 - keep **our** story/narrative/feel in the standard CAP elements If a grouping of constraints is called a profile we can
 - manage Canada while remaining interoperable with the world



All Layers in an
Environment Canada
CAP message

```

<?xml version="1.0" encoding="UTF-8"?>
<alert xmlns="urn:oasis:names:tc:emergency:cap:1.2">
  <identifier>urn:oid:2.49.0.1.124.2378055368.2018</identifier>
  <sender>cap-pac@canada.ca</sender>
  <sent>2018-08-17T20:42:24-00:00</sent>
  <status>Actual</status>
  <msgType>Alert</msgType>
  <source>Env. Can. - Can. Met. Ctr. - Montréal</source>
  <scope>Public</scope>
  <code>profile:CAP-CP:0.4</code>
  <code>layer:SOREM:1.0</code>
  <code>layer:EC-MSC-SMC:1.0</code>
  <code>layer:WPAM:1.0</code>
  <code>layer:EC-MSC-SMC:1.1</code>
  <code>layer:SOREM:2.0</code>
  <references/>
  <info>
    <language>en-CA</language>
    <category>Met</category>
    <event>tornado</event>
    <responseType>Shelter</responseType>
    <responseType>Monitor</responseType>
    <urgency>Immediate</urgency>
    <severity>Extreme</severity>
    <certainty>Observed</certainty>
    <audience>general public</audience>
    <eventCode>
      <valueName>profile:CAP-CP:Event:0.4</valueName>
      <value>tornado</value>
    </eventCode>
    <eventCode>
      <valueName>SAME</valueName>
      <value>TOR</value>
    </eventCode>
    <effective>2018-08-17T20:42:24-00:00</effective>
    <expires>2018-08-17T22:11:24-00:00</expires>
    <senderName>Environment Canada</senderName>
    <headline>tornado warning in effect</headline>
    <description> At 8:17 p.m. CST, Environment Canada meteorologists are tracking a severe thunderstorm that is possibly producing a tornado. Damaging winds, large hail and locally intense rainfall are also possible. This potential tornado is located over the Minton area and is moving to the east at approximately 50 km/h towards the Lake Alma area. ### This is a dangerous and potentially life-threatening situation. Tornado warnings are issued when imminent or occurring thunderstorms are likely to produce or are producing tornadoes. </description>
    <instruction> Take cover immediately, if threatening weather approaches. If you hear a roaring sound or see a funnel cloud, swirling debris near the ground, flying debris, or any threatening weather approaching, take shelter immediately. Go indoors to a room on the lowest floor, away from outside walls and windows, such as a basement, bathroom, stairwell or interior closet. Leave mobile homes, vehicles, tents, trailers and other temporary or free-standing shelter, and move to a strong building if you can. As a last resort, lie in a low spot and protect your head from flying debris. Lightning kills and injures Canadians every year. Remember, when thunder roars, go indoors! </instruction>
    <parameter>
      <valueName>layer:EC-MSC-SMC:1.0:Alert_Type</valueName>
      <value>warning</value>
    </parameter>
    <parameter>
      <valueName>layer:SOREM:1.0:Broadcast_Immediately</valueName>
      <value>Yes</value>
    </parameter>
    <parameter>
      <valueName>layer:EC-MSC-SMC:1.1:CAP_count</valueName>
      <value>A:1064 M:2413 C:3051</value>
    </parameter>
    <parameter>
      <valueName>layer:EC-MSC-SMC:1.0:Alert_Location_Status</valueName>
      <value>active</value>
    </parameter>
    <parameter>
      <valueName>layer:EC-MSC-SMC:1.0:Alert_Name</valueName>
      <value>tornado warning</value>
    </parameter>
    <parameter>
      <valueName>layer:EC-MSC-SMC:1.0:Alert_Coverage</valueName>
      <value>Alberta</value>
    </parameter>
    <parameter>
      <valueName>layer:SOREM:1.0:Broadcast_Text</valueName>
      <value>At 8:17 p.m. Central Standard Time Tuesday, Environment Canada has issued a tornado warning for South Central and Southeastern Saskatchewan. Extra care and attention should be exercised in and around the following localities: Coronach, Bengough, Ceylon, Hardy, Big Beaver, Minton, Regway, Radville, Colgate, Goodwater, Lake Alma, Beaubier, Tribune and Oungre. Environment Canada meteorologists are tracking a severe thunderstorm that is possibly producing a tornado. Damaging winds, large hail and locally intense rainfall are also possible. Take cover immediately if threatening weather approaches. Please consult local media for more information.</value>
    </parameter>
  </info>

```

```

<?xml version="1.0" encoding="UTF-8"?>
<alert xmlns="urn:oasis:names:tc:emergency:cap:1.2">
  <identifier>urn:oid:2.49.0.1.124.2378055368.2018</identifier>
  <sender>cap-pac@canada.ca</sender>
  <sent>2018-08-17T20:42:24-00:00</sent>
  <status>Actual</status>
  <msgType>Alert</msgType>
  <source>Env. Can. - Can. Met. Ctr. - Montréal</source>
  <scope>Public</scope>
  <code>profile:CAP-CP:0.4</code>
  <code>layer:SOREM:1.0</code>
  <code>layer:EC-MSC-SMC:1.0</code>
  <code>layer:WPAM:1.0</code>
  <code>layer:EC-MSC-SMC:1.1</code>
  <code>layer:SOREM:2.0</code>
  <references/>
  <info>
    <language>en-CA</language>
    <category>Met</category>
    <event>tornado</event>
    <responseType>Shelter</responseType>
    <responseType>Monitor</responseType>
    <urgency>Immediate</urgency>
    <severity>Extreme</severity>
    <certainty>Observed</certainty>
    <audience>general public</audience>
    <eventCode>
      <valueName>profile:CAP-CP:Event:0.4</valueName>
      <value>tornado</value>
    </eventCode>
    <eventCode>
      <valueName>SAME</valueName>
      <value>TOR</value>
    </eventCode>
    <effective>2018-08-17T20:42:24-00:00</effective>
    <expires>2018-08-17T22:11:24-00:00</expires>
    <senderName>Environment Canada</senderName>
    <headline>tornado warning in effect</headline>
    <description> At 8:17 p.m. CST, Environment Canada meteorologists are tracking a severe thunderstorm that is possibly producing a tornado. Damaging winds, large hail and locally intense rainfall are also possible. This potential tornado is located over the Minton area and is moving to the east at approximately 50 km/h towards the Lake Alma area. ### This is a dangerous and potentially life-threatening situation. Tornado warnings are issued when imminent or occurring thunderstorms are likely to produce or are producing tornadoes. </description>
    <instruction> Take cover immediately, if threatening weather approaches. If you hear a roaring sound or see a funnel cloud, swirling debris near the ground, flying debris, or any threatening weather approaching, take shelter immediately. Go indoors to a room on the lowest floor, away from outside walls and windows, such as a basement, bathroom, stairwell or interior closet. Leave mobile homes, vehicles, tents, trailers and other temporary or free-standing shelter, and move to a strong building if you can. As a last resort, lie in a low spot and protect your head from flying debris. Lightning kills and injures Canadians every year. Remember, when thunder roars, go indoors! </instruction>
    <parameter>
      <valueName>layer:EC-MSC-SMC:1.0:Alert_Type</valueName>
      <value>warning</value>
    </parameter>
    <parameter>
      <valueName>layer:SOREM:1.0:Broadcast_Immediately</valueName>
      <value>Yes</value>
    </parameter>
    <parameter>
      <valueName>layer:EC-MSC-SMC:1.1:CAP_count</valueName>
      <value>A:1064 M:2413 C:3051</value>
    </parameter>
    <parameter>
      <valueName>layer:EC-MSC-SMC:1.0:Alert_Location_Status</valueName>
      <value>active</value>
    </parameter>
    <parameter>
      <valueName>layer:EC-MSC-SMC:1.0:Alert_Name</valueName>
      <value>tornado warning</value>
    </parameter>
    <parameter>
      <valueName>layer:EC-MSC-SMC:1.0:Alert_Coverage</valueName>
      <value>Alberta</value>
    </parameter>
    <parameter>
      <valueName>layer:SOREM:1.0:Broadcast_Text</valueName>
      <value>At 8:17 p.m. Central Standard Time Tuesday, Environment Canada has issued a tornado warning for South Central and Southeastern Saskatchewan. Extra care and attention should be exercised in and around the following localities: Coronach, Bengough, Ceylon, Hardy, Big Beaver, Minton, Regway, Radville, Colgate, Goodwater, Lake Alma, Beaubier, Tribune and Oungre. Environment Canada meteorologists are tracking a severe thunderstorm that is possibly producing a tornado. Damaging winds, large hail and locally intense rainfall are also possible. Take cover immediately if threatening weather approaches. Please consult local media for more information.</value>
    </parameter>
  </info>

```



```
<?xml version="1.0" encoding="UTF-8"?>
<alert xmlns="urn:oasis:names:tc:emergency:cap:1.2">
  <identifier>urn:oid:2.49.0.1.124.2378055368.2018</identifier>
  <sender>cap-pac@canada.ca</sender>
  <sent>2018-08-17T20:42:24-00:00</sent>
  <status>Actual</status>
  <msgType>Alert</msgType>
  <source>Env. Can. - Can. Met. Ctr. - Montréal</source>
  <scope>Public</scope>
  <code>profile:CAP-CP:0.4</code>
  <code>layer:SOREM:1.0</code>
  <code>layer:EC-MSC-SMC:1.0</code>
  <code>layer:WPAM:1.0</code>
  <code>layer:EC-MSC-SMC:1.1</code>
  <code>layer:SOREM:2.0</code>
  <references/>
  <info>
    <language>en-CA</language>
    <category>Met</category>
    <event>tornado</event>
    <responseType>Shelter</responseType>
    <responseType>Monitor</responseType>
    <urgency>Immediate</urgency>
    <severity>Extreme</severity>
    <certainty>Observed</certainty>
    <audience>general public</audience>
    <eventCode>
      <valueName>profile:CAP-CP:Event:0.4</valueName>
      <value>tornado</value>
    </eventCode>
    <eventCode>
      <valueName>SAME</valueName>
      <value>TOR</value>
    </eventCode>
    <effective>2018-08-17T20:42:24-00:00</effective>
    <expires>2018-08-17T22:11:24-00:00</expires>
    <senderName>Environment Canada</senderName>
    <headline>tornado warning in effect</headline>
    <description> At 8:17 p.m. CST, Environment Canada meteorologists are tracking a severe thunderstorm that is possibly producing a tornado. Damaging winds, large hail and locally intense rainfall are also possible. This potential tornado is located over the Minton area and is moving to the east at approximately 50 km/h towards the Lake Alma area. ### This is a dangerous and potentially life-threatening situation. Tornado warnings are issued when imminent or occurring thunderstorms are likely to produce or are producing tornadoes. </description>
    <instruction> Take cover immediately, if threatening weather approaches. If you hear a roaring sound or see a funnel cloud, swirling debris near the ground, flying debris, or any threatening weather approaching, take shelter immediately. Go indoors to a room on the lowest floor, away from outside walls and windows, such as a basement, bathroom, stairwell or interior closet. Leave mobile homes, vehicles, tents, trailers and other temporary or free-standing shelter, and move to a strong building if you can. As a last resort, lie in a low spot and protect your head from flying debris. Lightning kills and injures Canadians every year. Remember, when thunder roars, go indoors! </instruction>
    <parameter>
      <valueName>layer:EC-MSC-SMC:1.0:Alert_Type</valueName>
      <value>warning</value>
    </parameter>
    <parameter>
      <valueName>layer:EC-MSC-SMC:1.0:Broadcast_Intrusive</valueName>
      <value>Yes</value>
    </parameter>
    <parameter>
      <valueName>layer:SOREM:1.0:Broadcast_Immediately</valueName>
      <value>Yes</value>
    </parameter>
    <parameter>
      <valueName>layer:EC-MSC-SMC:1.1:CAP_count</valueName>
      <value>A:1064 M:2413 C:3051</value>
    </parameter>
    <parameter>
      <valueName>layer:EC-MSC-SMC:1.0:Alert_Location_Status</valueName>
      <value>active</value>
    </parameter>
    <parameter>
      <valueName>layer:EC-MSC-SMC:1.0:Alert_Name</valueName>
      <value>tornado warning</value>
    </parameter>
    <parameter>
      <valueName>layer:EC-MSC-SMC:1.0:Alert_Coverage</valueName>
      <value>Alberta</value>
    </parameter>
    <parameter>
      <valueName>layer:SOREM:2.0:WirelessImmediate</valueName>
      <value>Yes</value>
    </parameter>
  </info>
</alert>
```

```
<?xml version="1.0" encoding="UTF-8"?>
<alert xmlns="urn:oasis:names:tc:emergency:cap:1.2">
  <identifier>urn:oid:2.49.0.1.124.2378055368.2018</identifier>
  <sender>cap-pac@canada.ca</sender>
  <sent>2018-08-17T20:42:24-00:00</sent>
  <status>Actual</status>
  <msgType>Alert</msgType>
  <source>Env. Can. - Can. Met. Ctr. - Montréal</source>
  <scope>Public</scope>
  <code>profile:CAP-CP:0.4</code>
  <code>layer:SOREM:1.0</code>
  <code>layer:EC-MSC-SMC:1.0</code>
  <code>layer:WPAM:1.0</code>
  <code>layer:EC-MSC-SMC:1.1</code>
  <code>layer:SOREM:2.0</code>
  <references/>
  <info>
    <language>en-CA</language>
    <category>Met</category>
    <event>tornado</event>
    <responseType>Shelter</responseType>
    <responseType>Monitor</responseType>
    <urgency>Immediate</urgency>
    <severity>Extreme</severity>
    <certainty>Observed</certainty>
    <audience>general public</audience>
  </info>
  <eventCode>
    <valueName>profile:CAP-CP:Event:0.4</valueName>
    <value>tornado</value>
  </eventCode>
  <eventCode>
    <valueName>SAME</valueName>
    <value>TOR</value>
  </eventCode>
  <effective>2018-08-17T20:42:24-00:00</effective>
  <expires>2018-08-17T22:11:24-00:00</expires>
  <senderName>Environment Canada</senderName>
  <headline>tornado warning in effect</headline>
  <description> At 8:17 p.m. CST, Environment Canada meteorologists are tracking a severe thunderstorm that is possibly producing a tornado. Damaging winds, large hail and locally intense rainfall are also possible. This potential tornado is located over the Minton area and is moving to the east at approximately 50 km/h towards the Lake Alma area. ### This is a dangerous and potentially life-threatening situation. Tornado warnings are issued when imminent or occurring thunderstorms are likely to produce or are producing tornadoes. </description>
  <instruction> Take cover immediately, if threatening weather approaches. If you hear a roaring sound or see a funnel cloud, swirling debris near the ground, flying debris, or any threatening weather approaching, take shelter immediately. Go indoors to a room on the lowest floor, away from outside walls and windows, such as a basement, bathroom, stairwell or interior closet. Leave mobile homes, vehicles, tents, trailers and other temporary or free-standing shelter, and move to a strong building if you can. As a last resort, lie in a low spot and protect your head from flying debris. Lightning kills and injures Canadians every year. Remember, when thunder roars, go indoors! </instruction>
  <parameter>
    <valueName>layer:EC-MSC-SMC:1.0:Alert_Type</valueName>
    <value>warning</value>
  </parameter>
  <parameter>
    <valueName>layer:SOREM:1.0:Broadcast_Immediately</valueName>
    <value>Yes</value>
  </parameter>
  <parameter>
    <valueName>layer:EC-MSC-SMC:1.1:CAP_count</valueName>
    <value>A:1064 M:2413 C:3051</value>
  </parameter>
  <parameter>
    <valueName>layer:EC-MSC-SMC:1.0:Alert_Location_Status</valueName>
    <value>active</value>
  </parameter>
  <parameter>
    <valueName>layer:EC-MSC-SMC:1.0:Alert_Name</valueName>
    <value>tornado warning</value>
  </parameter>
  <parameter>
    <valueName>layer:EC-MSC-SMC:1.0:Alert_Coverage</valueName>
    <value>Alberta</value>
  </parameter>
  <parameter>
    <valueName>layer:SOREM:1.0:Broadcast_Text</valueName>
    <value>At 8:17 p.m. Central Standard Time Tuesday, Environment Canada has issued a tornado warning for South Central and Southeastern Saskatchewan. Extra care and attention should be exercised in and around the following localities: Coronach, Bengough, Ceylon, Hardy, Big Beaver, Minton, Regway, Radville, Colgate, Goodwater, Lake Alma, Beaubier, Tribune and Oungre. Environment Canada meteorologists are tracking a severe thunderstorm that is possibly producing a tornado. Damaging winds, large hail and locally intense rainfall are also possible. Take cover immediately if threatening weather approaches. Please consult local media for more information.</value>
  </parameter>
</alert>
```



```
<?xml version="1.0" encoding="UTF-8"?>
<alert xmlns="urn:oasis:names:tc:emergency:cap:1.2">
  <identifier>urn:oid:2.49.0.1.124.2378055368.2018</identifier>
  <sender>cap-pac@canada.ca</sender>
  <sent>2018-08-17T20:42:24-00:00</sent>
  <status>Actual</status>
  <msgType>Alert</msgType>
  <source>Env. Can. - Can. Met. Ctr. - Montréal</source>
  <scope>Public</scope>
  <code>profile:CAP-CP:0.4</code>
  <code>layer:SOREM:1.0</code>
  <code>layer:EC-MSC-SMC:1.0</code>
  <code>layer:WPAM:1.0</code>
  <code>layer:EC-MSC-SMC:1.1</code>
  <code>layer:SOREM:2.0</code>
  <references/>
  <info>
    <language>en-CA</language>
    <category>Met</category>
    <event>tornado</event>
    <responseType>Shelter</responseType>
    <responseType>Monitor</responseType>
    <urgency>Immediate</urgency>
    <severity>Extreme</severity>
    <certainty>Observed</certainty>
    <audience>general public</audience>
  </info>
  <eventCode>
    <valueName>profile:CAP-CP:Event:0.4</valueName>
    <value>tornado</value>
  </eventCode>
  <eventCode>
    <valueName>SAME</valueName>
    <value>TOR</value>
  </eventCode>
  <effective>2018-08-17T20:42:24-00:00</effective>
  <expires>2018-08-17T22:11:24-00:00</expires>
  <senderName>Environment Canada</senderName>
  <headline>tornado warning in effect</headline>
  <description>At 8:17 p.m. CST, Environment Canada meteorologists are tracking a severe thunderstorm that is possibly producing a tornado. Damaging winds, large hail and locally intense rainfall are also possible. This potential tornado is located over the Minton area and is moving to the east at approximately 50 km/h towards the Lake Alma area. ### This is a dangerous and potentially life-threatening situation. Tornado warnings are issued when imminent or occurring thunderstorms are likely to produce or are producing tornadoes. </description>
  <instruction>Take cover immediately, if threatening weather approaches. If you hear a roaring sound or see a funnel cloud, swirling debris near the ground, flying debris, or any threatening weather approaching, take shelter immediately. Go indoors to a room on the lowest floor, away from outside walls and windows, such as a basement, bathroom, stairwell or interior closet. Leave mobile homes, vehicles, tents, trailers and other temporary or free-standing shelter, and move to a strong building if you can. As a last resort, lie in a low spot and protect your head from flying debris. Lightning kills and injures Canadians every year. Remember, when thunder roars, go indoors! </instruction>
  <parameter>
    <valueName>layer:EC-MSC-SMC:1.0:Alert_Type</valueName>
    <value>warning</value>
  </parameter>
  <parameter>
    <valueName>layer:SOREM:1.0:Broadcast_Immediately</valueName>
    <value>Yes</value>
  </parameter>
  <parameter>
    <valueName>layer:EC-MSC-SMC:1.1:Parent_URI</valueName>
    <value>msc/alert/environment/hazard/alert-3.0-ascii/consolidated-xml-2.0/20180711021734746/SK_00_01_LAND/TRW/2159142941916918131201807100501_SK_00_01_LAND/actual/en_proper_complete_u-fr_proper_complete_c/NinJo</value>
  </parameter>
  <parameter>
    <valueName>layer:EC-MSC-SMC:1.1:CAP_count</valueName>
    <value>A:1064 M:2413 C:3051</value>
  </parameter>
  <parameter>
    <valueName>layer:EC-MSC-SMC:1.0:Alert_Location_Status</valueName>
    <value>active</value>
  </parameter>
  <parameter>
    <valueName>layer:EC-MSC-SMC:1.0:Alert_Name</valueName>
    <value>tornado warning</value>
  </parameter>
  <parameter>
    <valueName>layer:EC-MSC-SMC:1.0:Alert_Coverage</valueName>
    <value>Alberta</value>
  </parameter>
  <parameter>
    <valueName>layer:SOREM:1.0:Broadcast_Text</valueName>
    <value>At 8:17 p.m. Central Standard Time Tuesday, Environment Canada has issued a tornado warning for South Central and Southeastern Saskatchewan. Extra care and attention should be paid to the following locations: Garbutt, Bonanza, Gull, Hilda, Big River, Tisdale, Rosam, Redville, Gresham, and other locations in the area. Tornadoes can be deadly and destructive. Stay alert and take cover immediately if you see or hear signs of a tornado. Remember, when thunder roars, go indoors!</value>
  </parameter>
</alert>
```



```
<?xml version="1.0" encoding="UTF-8"?>
<alert xmlns="urn:oasis:names:tc:emergency:cap:1.2">
  <identifier>urn:oid:2.49.0.1.124.2378055368.2018</identifier>
  <sender>cap-pac@canada.ca</sender>
  <sent>2018-08-17T20:42:24-00:00</sent>
  <status>Actual</status>
  <msgType>Alert</msgType>
  <source>Env. Can. - Can. Met. Ctr. - Montréal</source>
  <scope>Public</scope>
  <code>profile:CAP-CP:0.4</code>
  <code>layer:SOREM:1.0</code>
  <code>layer:EC-MSC-SMC:1.0</code>
  <code>layer:WPAM:1.0</code>
  <code>layer:EC-MSC-SMC:1.1</code>
  <code>layer:SOREM:2.0</code>
  <references/>
  <info>
    <language>en-CA</language>
    <category>Met</category>
    <event>tornado</event>
    <responseType>Shelter</responseType>
    <responseType>Monitor</responseType>
    <urgency>Immediate</urgency>
    <severity>Extreme</severity>
    <certainty>Observed</certainty>
    <audience>general public</audience>
  </info>
  <eventCode>
    <valueName>profile:CAP-CP:Event:0.4</valueName>
    <value>tornado</value>
  </eventCode>
  <eventCode>
    <valueName>SAME</valueName>
    <value>TOR</value>
  </eventCode>
  <effective>2018-08-17T20:42:24-00:00</effective>
  <expires>2018-08-17T22:11:24-00:00</expires>
  <senderName>Environment Canada</senderName>
  <headline>tornado warning in effect</headline>
  <description> At 8:17 p.m. CST, Environment Canada meteorologists are tracking a severe thunderstorm that is possibly producing a tornado. Damaging winds, large hail and locally intense rainfall are also possible. This potential tornado is located over the Minton area and is moving to the east at approximately 50 km/h towards the Lake Alma area. ## This is a dangerous and potentially life-threatening situation. Tornado warnings are issued when imminent or occurring thunderstorms are likely to produce or are producing tornadoes. </description>
  <instruction> Take cover immediately, if threatening weather approaches. If you hear a roaring sound or see a funnel cloud, swirling debris near the ground, flying debris, or any threatening weather approaching, take shelter immediately. Go indoors to a room on the lowest floor, away from outside walls and windows, such as a basement, bathroom, stairwell or interior closet. Leave mobile homes, vehicles, tents, trailers and other temporary or free-standing shelter, and move to a strong building if you can. As a last resort, lie in a low spot and protect your head from flying debris. Lightning kills and injures Canadians every year. Remember, when thunder roars, go indoors! </instruction>
  <parameter>
    <valueName>layer:EC-MSC-SMC:1.0:Alert_Type</valueName>
    <value>warning</value>
  </parameter>
  <parameter>
    <valueName>layer:SOREM:1.0:Broadcast_Immediately</valueName>
    <value>Yes</value>
  </parameter>
  <parameter>
    <valueName>layer:EC-MSC-SMC:1.1:CAP_count</valueName>
    <value>A:1064 M:2413 C:3051</value>
  </parameter>
  <parameter>
    <valueName>layer:EC-MSC-SMC:1.0:Alert_Location_Status</valueName>
    <value>active</value>
  </parameter>
  <parameter>
    <valueName>layer:EC-MSC-SMC:1.0:Alert_Name</valueName>
    <value>tornado warning</value>
  </parameter>
  <parameter>
    <valueName>layer:EC-MSC-SMC:1.0:Alert_Coverage</valueName>
    <value>Alberta</value>
  </parameter>
  <parameter>
    <valueName>layer:SOREM:1.0:Broadcast_Text</valueName>
    <value>At 8:17 p.m. Central Standard Time Tuesday, Environment Canada has issued a tornado warning for South Central and Southeastern Saskatchewan. Extra care and attention should be exercised in and around the following localities: Coronach, Bengough, Ceylon, Hardy, Big Beaver, Minton, Regway, Radville, Colgate, Goodwater, Lake Alma, Beaubier, Tribune and Oungre. Environment Canada meteorologists are tracking a severe thunderstorm that is possibly producing a tornado. Damaging winds, large hail and locally intense rainfall are also possible. Take cover immediately if threatening weather approaches. Please consult local media for more information.</value>
  </parameter>
</alert>
```



SPORTSNET

10m ago

OAK Score

Athletics Score:

Blue Jays 1, Athletics 4 (Bot 3rd).

Canha doubled to center, Olson scored.



EMERGENCY ALERTS

10m ago

EMERGENCY ALERT / ALERTE D'URGENCE

At 11:11 p.m. Eastern Daylight Time Tuesday, Environment Canada has issued a tornado warning for this mobile coverage area. Take cover immediately if threatening weather approaches. /// À 23h11 heure avancée de l'Est le mardi, Environnement Canada a émis une alerte de tornade pour cette zone de couverture mobile. Mettez-vous immédiatement à l'abri si un phénomène météorologique menaçant s'approche.



Environment
Canada

Environnement
Canada

Canada



Thank You

Norm Paulsen
(norm.Paulsen@Canada.ca)