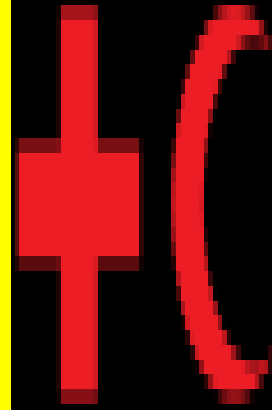




CENTRO DE ESTUDIOS INTEGRALES DE INNOVACIÓN Y EL TERRITORIO, S.C.
CONSULTORÍA ESTRATÉGICA



Global Disaster
Preparedness Center

PrepareCenter.Org

Prepare. Innovate. Learn. Together

2019 COMMON ALERTING PROTOCOL (CAP) IMPLEMENTATION WORKSHOP Mexico City, Mexico 16 - 18 OCTOBER 2019 Hosted by the Mexico City Secretariat of Integral Risk Management and Civil Protection Co- sponsored by IAEM, IFRC, ITU, OASIS and WMO

Experiences in Baja California Sur. México

Ramón Ojeda Mestre

Centro de Estudios Integrales de Innovación y el Territorio. S.C.

rojedamestre@yahoo.com

Ph. 624 177 8960



“Turn your wounds into wisdom.” .

Hurricanes or tropical storms are **natural phenomena**



Disaster or **catastrophe** is a **cultural anthropogenic consequence**
If we are in the wrong place in the wrong moment!!!!!!!!!!!!!!

In modern philosophical use, the term phenomena has come to mean 'what is **experienced is the basis of reality**'.

In Immanuel Kant's inaugural dissertation, On the Form and Principles of the Sensible and Intelligible World (1770), Kant theorizes that the **human mind is restricted to the logical world and thus can only interpret and understand occurrences according to their physical appearances**.

He wrote that humans could infer only as much as their senses allowed, but not experience the actual object itself. Thus, **the term phenomenon refers to any incident deserving of inquiry and investigation**, especially events that are particularly unusual or of distinctive importance. Dictionary of Visual Discourse: A Dialectical Lexicon of Terms. 2011.

Principal Productos SMN Mapas Meteorológicos Pronóstico 24 hrs Pronóstico 120 hrs GOES-13/15 GOES-16/17

BIENVENIDO AL MONITOREO DE CONDICIONES METEOROLOGICAS EN BAJA CALIFORNIA SUR

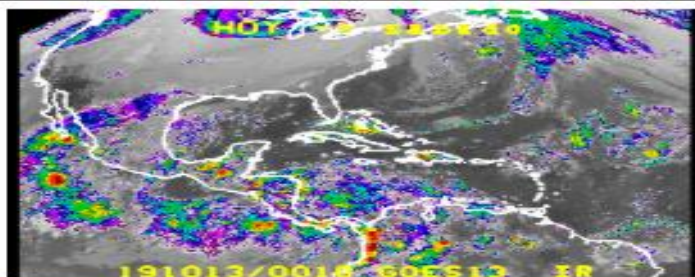
Actualización: sábado 12 de octubre 2019, 19:15 horas [01:15 GMT]

12/oct/12 hrs, la tormenta tropical MELISSA (38.2N, 66.3W) está a 4469 km al Noreste de Cabo San Lucas se desplaza hacia el Este a 14 km/h con presión mínima 999 mb y radio de viento máximo 37 km.



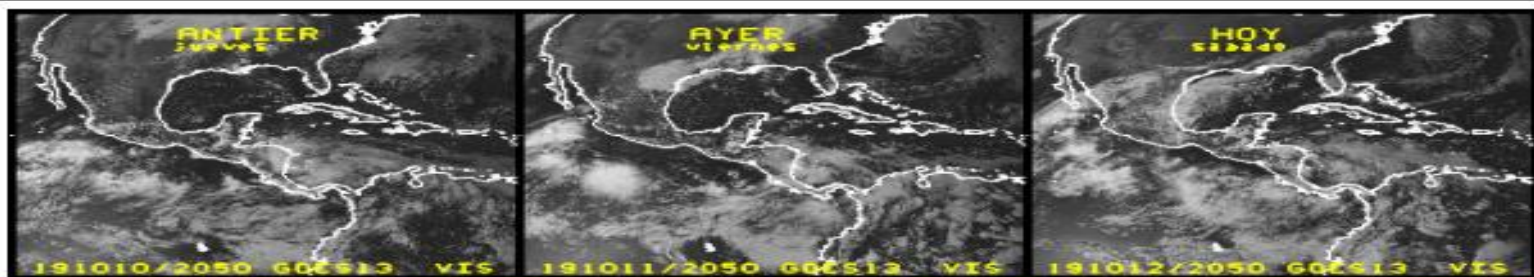
La línea en color es la trayectoria observada, signos "+" representan el pronóstico oficial (0,3,12,24,36,48,72,96 y 120 horas). Las circunferencias concéntricas tienen radio de 300,600 y 900 kilómetros desde Cabo San Lucas, Baja California Sur (22.9N, 109.9W). Presionar en cada signo "+" para obtener más información sobre el tiempo (hora) e intensidad (km/h) asociados a los pronósticos oficiales. El círculo amarillo (naranja) es donde el viento >63 km/h (>119 km/h) que es la intensidad mínima en las tormentas tropicales (los huracanes).

GOES-13, infrarojo animación de imágenes



La animación inicia a la hora 00:10 GMT

GOES-13, imagen visible con resolución 1 km; esta es una imagen individual: VIS 20191012 2050



Estas imágenes se actualizan diariamente, 0910 y 1510 horas

Elaboradas en CICESE (Ensenada, B.C.) con datos de Unidata

Some experiences at **Los Cabos, Baja California Sur,** Mexico, about the **Odile hurricane** awful effects and our lack of preparedness for the **thunderstorm Lidia** (2017) which took lives and very expensive costs.

Common Alerting Protocol (CAP) Train the Trainers
Session and CAP Implementation Workshop Mexico
City 16-18 October 2019



The **state of Baja California Sur** is located on the southern half of the Baja Peninsula. It is bordered to the north by the state of Baja California, to the west by the Pacific Ocean, and to the east by the Gulf of California (Sea of Cortez). The state includes islands in the Pacific (Natividad, Magdalena, and Santa Margarita), as well as several islands in the Gulf of California.

Area: 44 380 miles² (71 430 km²), 3.7% of the national territory

Population (2015)[7]

- Total 763,929 [1]
- Rank 31st
- Density rank 32nd

it is about 750 km long and averages about 100 km wide





Los Cabos

**Baja
California Sur
MEXICO**

**October 16th
2019**

The coastline of **California USA** is
approximately 840 miles long
1,350 km.

**The Coastline of Baja California Sur in México is apx.
1,242 miles long,
more tan 2,000 Kilometers !!!!!**

So, we are “wide open to the cold hand of fate”

Los Cabos, has an área of 3,751 Sq. Kms. apx.
2,330 Sq. Miles and near to 400 thousand
inhabitants but 5 millón tourists a year.



We, were not prepared. We, were not prepared. We, were
not prepared. We, were not prepared. We, were not
prepared. We, were not prepared. We, were not prepared.
We, were not prepared. We, were not prepared. We, were
not prepared. **We, were not prepared.** We, were not
prepared. We, were not prepared. We, were not prepared.
We, were not prepared. We, were not prepared. We, were
not prepared. **We, were not prepared.**

“Heavy precipitation was also reported in northwestern Mexico, with nearly 12 in (300 mm) of rain observed in San José del Cabo. Nationwide, **twenty deaths** were attributed to the storm, including two from electrocution and two from drowning”. Usual reports



Nature give us rain, storms; the ocean or the tsunamis

We place ourselves where they can hurt us

What did we loose for not beeing prepared?



- A. Human lives
- B. Animal lives
- C. Resiliency
- D. A lot of money
- E. Respect for the authorities
- F. Respect to our neighbours
- G. **Self respect**
- H. Honesty (We had awful **Rapine**)
- I. Prestige as tourist center
- J. Urban Image
- K. Quality in public services
- L. Disruption in public Works
- LI. Avoidance damages to poor
- M. Confidence in the Institutions
- N. Strenghten the resiliency
- Ñ. Environmental balance









What the hell did we learned?





<https://tribunadeloscabos.com.mx/olvidados-experiencias-ignoradas-documental-trailer/>

<https://youtu.be/7LUgtrbFWWhY>

<https://www.youtube.com/watch?v=QqMe-LNgwgU>





Odile golpe a Baja California Sur

Rapiña a tiendas y supermercados, desabasto de alimentos y combustibles , así como inseguridad, son algunas de las secuelas que padecen los pobladores de Baja California Sur tras el paso del huracán Odile.

Cientos de personas robaron agua, comida y artículos de primera necesidad de tiendas WalMart y OXXO, entre otras. Pero algunos también aprovecharon para llevarse bebidas alcohólicas y electrodomésticos.

La situación ha llegado al punto en que comandos **encapuchados están asaltando las casas**, según habitantes de Los Cabos que decidieron protegerse con pistolas, machetes y palos.

Definition of civil defense: the system of protective measures and emergency relief activities conducted by civilians in case of hostile attack, sabotage, or **natural disaster.**

Civil protection assistance consists of **governmental aid delivered in preparation** for or immediate aftermath of a disaster in Europe and worldwide

Humble message to the
“Governments”:

Quousque tándem Catilina abútere
patientia nostra?

Ramón Ojeda-Mestre