

# Surge Information Management Support (SIMS)

Paul Knight, Rachel Yales, Maarten van der Veen



The Netherlands  
Red Cross

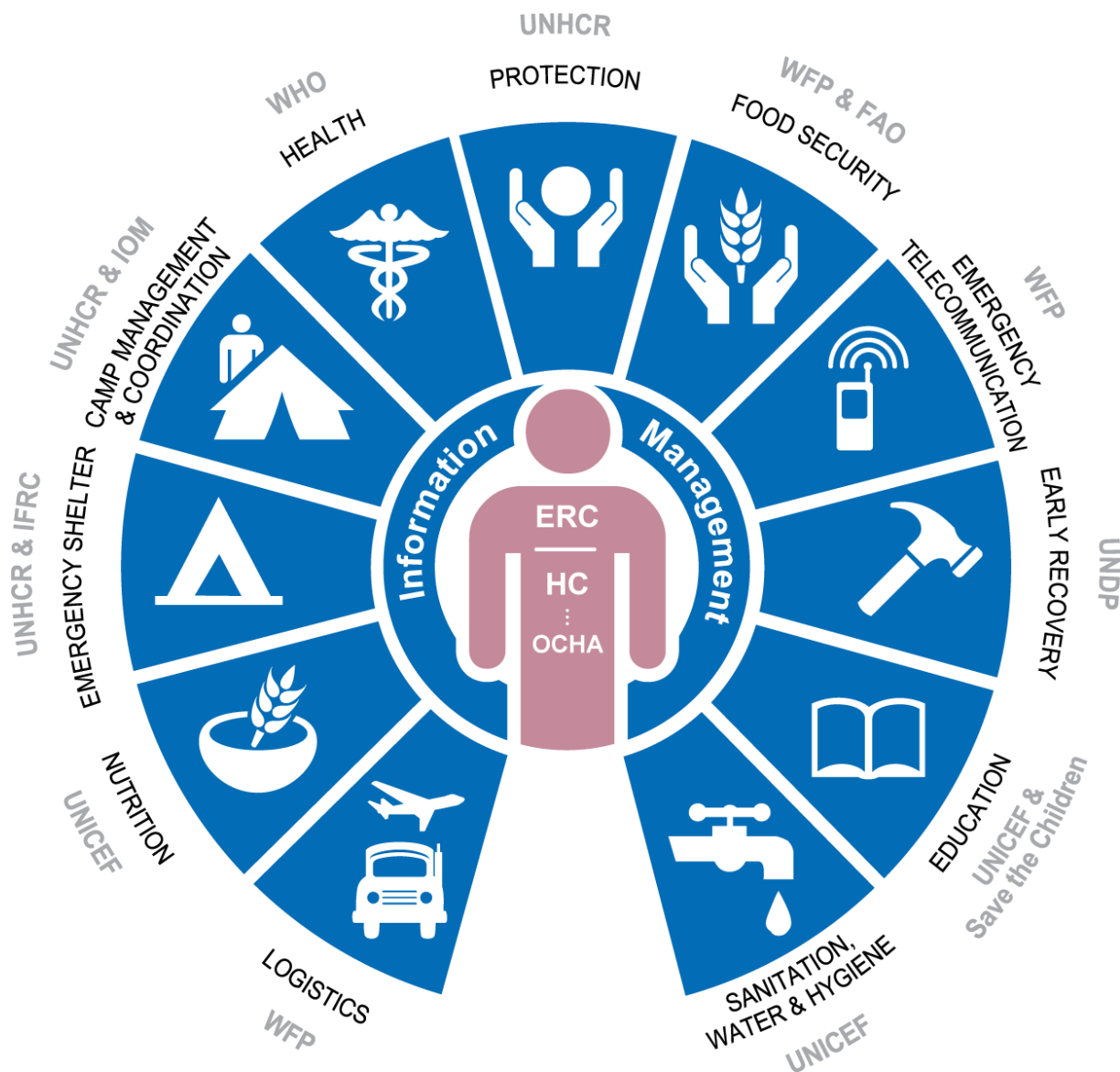


International Federation of Red Cross and Red Crescent Societies  
Fédération internationale des Sociétés de la Croix-Rouge et du Croissant-Rouge  
Federación Internacional de Sociedades de la Cruz Roja y de la Media Luna Roja  
الاتحاد الدولي لجمعيات الصليب الأحمر والهلال الأحمر

# Agenda

- Introduction
- Humanitarian disaster response
- Red Cross in humanitarian response
- What is SIMS
- Life cycle of a SIMS activation
- Lunch
- SIMS tools and resources
- SIMSulation
- Wrap up and evaluation





## Cluster members

- UN agencies
- Host government (national, regional, local)
- International NGOs
- Red Cross Red Crescent Movement
- Local NGOs / Civil Society Organizations
- Representatives of the Affected Population
- Donors
- Academia



International Federation of Red Cross and Red Crescent Societies  
Fédération internationale des Sociétés de la Croix-Rouge et du Croissant-Rouge  
Federación Internacional de Sociedades de la Cruz Roja y de la Media Luna Roja  
الاتحاد الدولي لجمعيات الصليب الأحمر والهلال الأحمر





**Shelter Cluster**



International Federation of Red Cross and Red Crescent Societies  
Fédération internationale des Sociétés de la Croix-Rouge et du Croissant-Rouge  
Federación Internacional de Sociedades de la Cruz Roja y de la Media Luna Roja  
الاتحاد الدولي لجمعيات الصليب الأحمر والهلال الأحمر

DATA PLAYBOOK: SLIDEDECK 15



# Currently active Shelter Clusters or cluster-like mechanisms

By year

2015

2016

This dashboard provides a summary of the coordination mechanisms currently in place, more detailed information can be found on the country-level pages for each response (links will show when hovering over a country).

**25**

Active clusters

**459**

Cluster partners

**\$105M**

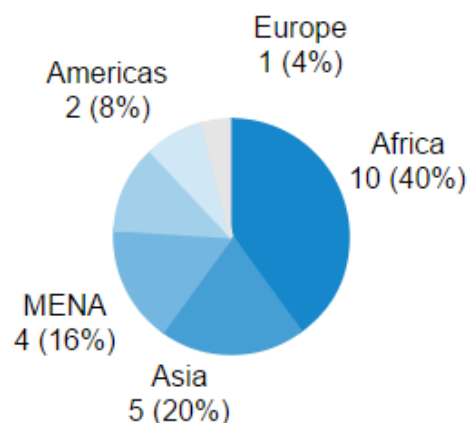
Funding received

**3,3M**

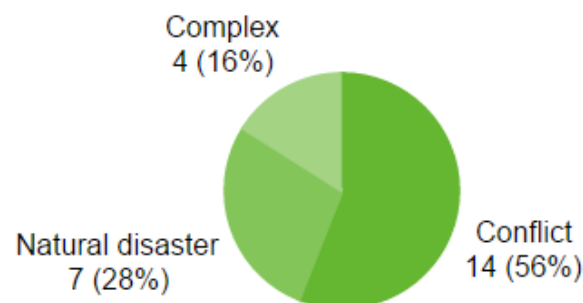
Number of people supported\*

\* To avoid overlap, this is based on the highest number of beneficiaries for either NFI or shelter per country

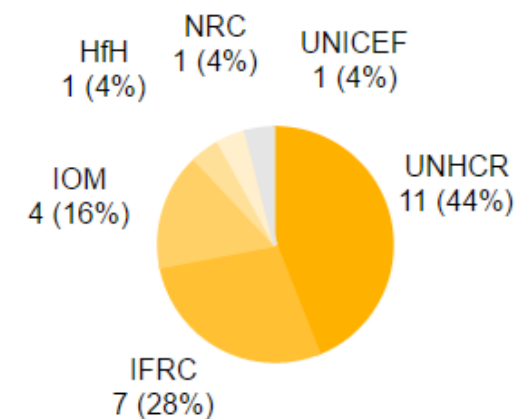
## By region



## By type of crisis



## By lead agency



International Federation of Red Cross and Red Crescent Societies  
Fédération internationale des Sociétés de la Croix-Rouge et du Croissant-Rouge  
Federación Internacional de Sociedades de la Cruz Roja y de la Media Luna Roja  
الاتحاد الدولي لجمعيات الصليب الأحمر والهلال الأحمر



# Shelter cluster information management



International Federation of Red Cross and Red Crescent Societies  
Fédération internationale des Sociétés de la Croix-Rouge et du Croissant-Rouge  
Federación Internacional de Sociedades de la Cruz Roja y de la Media Luna Roja  
الاتحاد الدولي لجمعيات الصليب الأحمر والهلال الأحمر

DATA PLAYBOOK: SLIDEDECK 15



## Red Cross in the humanitarian response

Frido Herinckx

Head of the Disaster response unit



International Federation of Red Cross and Red Crescent Societies  
Fédération internationale des Sociétés de la Croix-Rouge et du Croissant-Rouge  
Federación Internacional de Sociedades de la Cruz Roja y de la Media Luna Roja  
الاتحاد الدولي لجمعيات الصليب الأحمر والهلال الأحمر

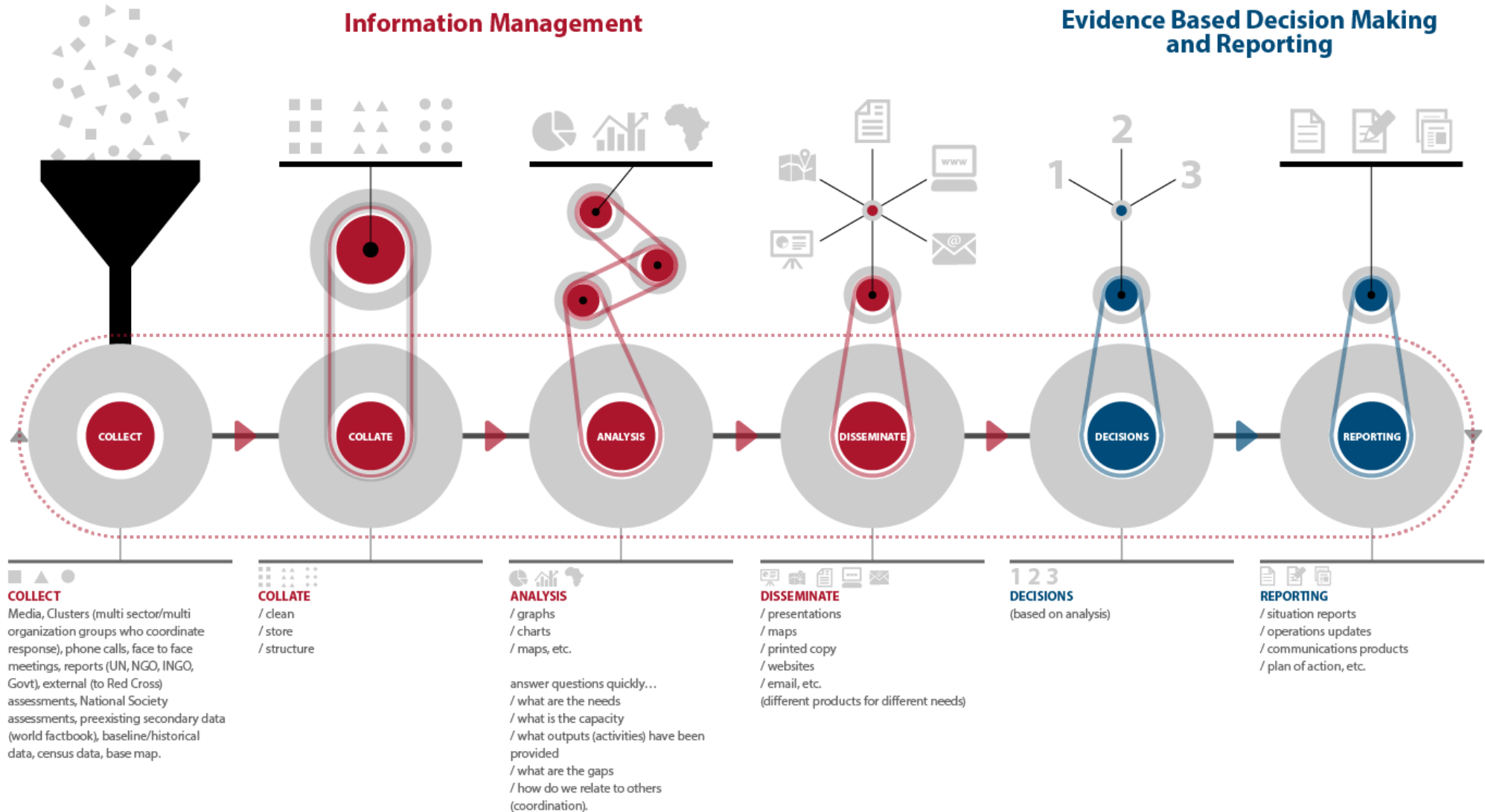


# Information management in disasters



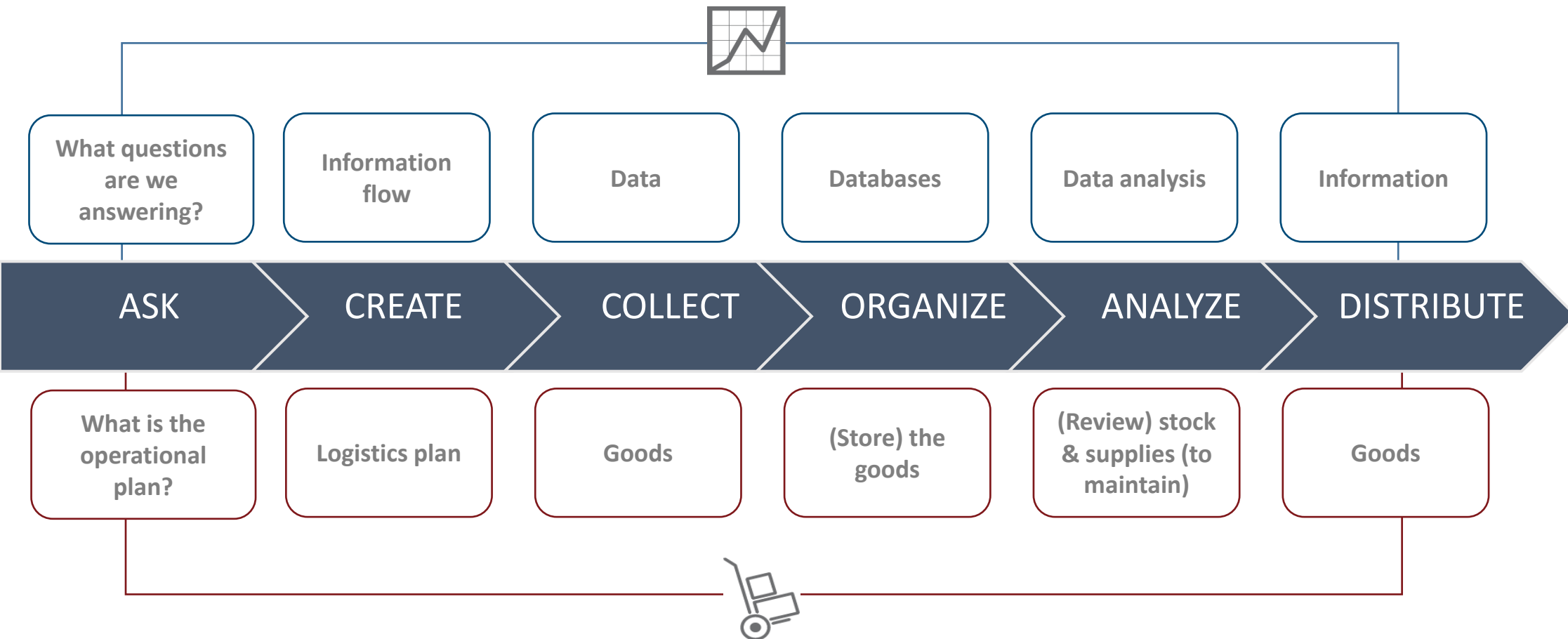
International Federation of Red Cross and Red Crescent Societies  
Fédération internationale des Sociétés de la Croix-Rouge et du Croissant-Rouge  
Federación Internacional de Sociedades de la Cruz Roja y de la Media Luna Roja  
الاتحاد الدولي لجمعيات الصليب الأحمر والهلال الأحمر

# Disaster Information Cycle



International Federation of Red Cross and Red Crescent Societies  
Fédération internationale des Sociétés de la Croix-Rouge et du Croissant-Rouge  
Federación Internacional de Sociedades de la Cruz Roja y de la Media Luna Roja  
الاتحاد الدولي لجمعيات الصليب الأحمر والهلال الأحمر

# IM is to information as logistics is to goods:





# Surge Information Management Support (SIMS)



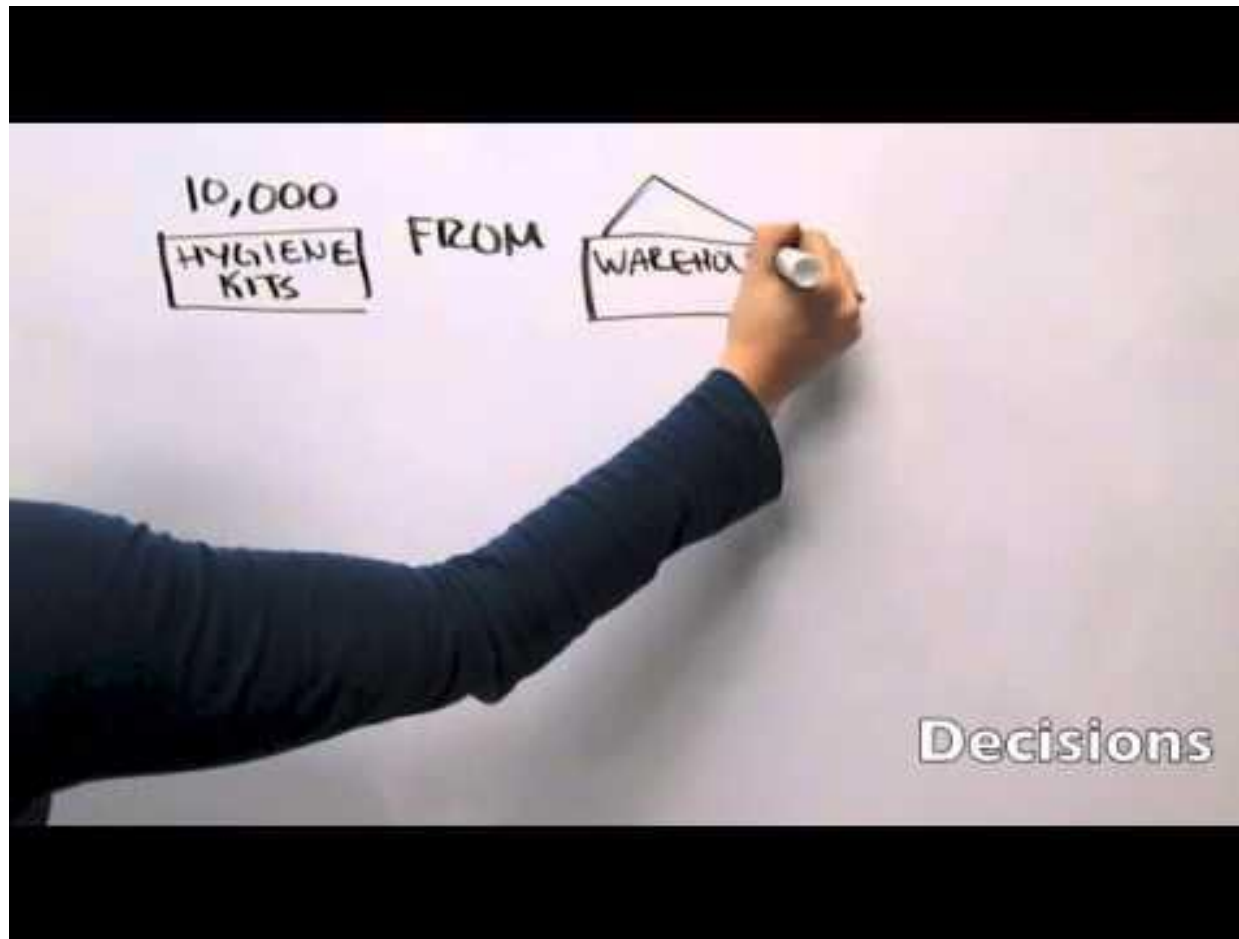
International Federation of Red Cross and Red Crescent Societies  
Fédération internationale des Sociétés de la Croix-Rouge et du Croissant-Rouge  
Federación Internacional de Sociedades de la Cruz Roja y de la Media Luna Roja  
الاتحاد الدولي لجمعيات الصليب الأحمر والهلال الأحمر

# What is SIMS?

SIMS (Surge Information Management Support) is a mechanism through which information management services are provided to the FACT and ERUs in an emergency response.



# What is SIMS?





# SIMS activities



Coordination



Capacity Building



Response Operations



# How does SIMS currently work?

Network of IM/GIS specialists from the British and American Red Cross GIS teams

Activation at the request of a FACT Team Lead through:

- The Region Office
- IFRC DCM Surge Desk



International Federation  
of Red Cross and Red Crescent Societies



**American  
Red Cross**



**BritishRedCross**

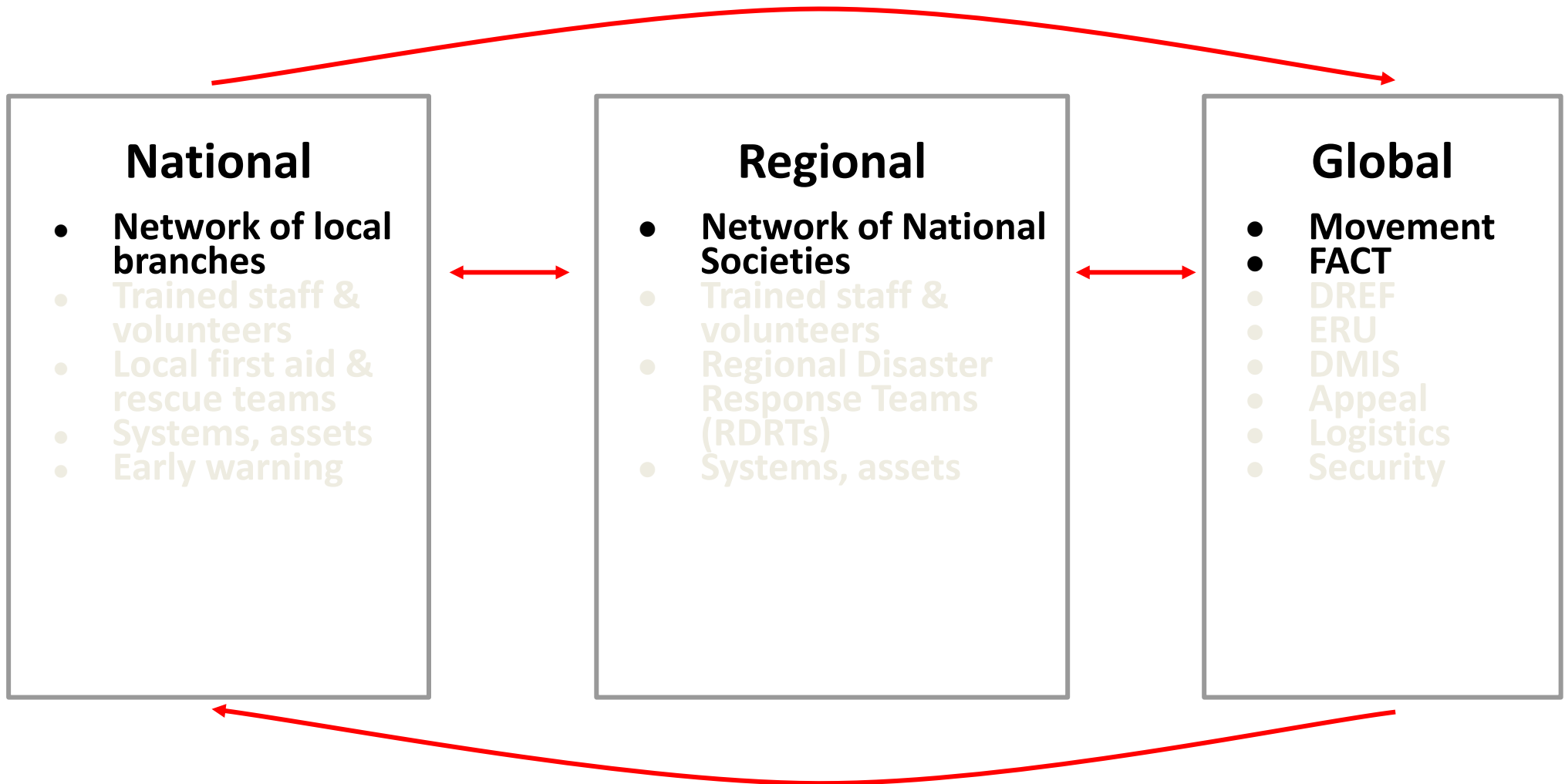


The Netherlands  
Red Cross



International Federation of Red Cross and Red Crescent Societies  
Fédération internationale des Sociétés de la Croix-Rouge et du Croissant-Rouge  
Federación Internacional de Sociedades de la Cruz Roja y de la Media Luna Roja  
الاتحاد الدولي لجمعيات الصليب الأحمر والهلال الأحمر

# Organisational chart





# Remote support



# Deployed



International Federation of Red Cross and Red Crescent Societies  
Fédération internationale des Sociétés de la Croix-Rouge et du Croissant-Rouge  
Federación Internacional de Sociedades de la Cruz Roja y de la Media Luna Roja  
الاتحاد الدولي لجمعيات الصليب الأحمر والهلال الأحمر

# Remote Support Roles

## SIMS Coordinator

- Works with operations leadership to determine appropriate level/type of support
- Identifies available human resources within the SIMS network
- Determines operation-specific roles & responsibilities
- Sets up and maintains coordination in SIMS team throughout operation
- Reviews and evaluates the provided support with the operations team, adjusting as needed



# Remote Support Roles

---

## GIS Specialist

- Briefing Pack maps
- Maps for the operation
- Data management
- Coordination
- Data visualisation

## IM Specialist

- Briefing pack
- Secondary data
- Spreadsheets
- Data management
- Coordination



# Deployed Roles

## FACT (1<sup>st</sup>/2<sup>nd</sup> Round)

- Field work
- All IM for FACT
- Support reporting

## Technical IM Specialist

- All IM for technical teams (Cash, Relief)
- Template/tool management
- Mobile data collection
- Capacity building
- Analysis, prototyping, modeling



# Activation Flow

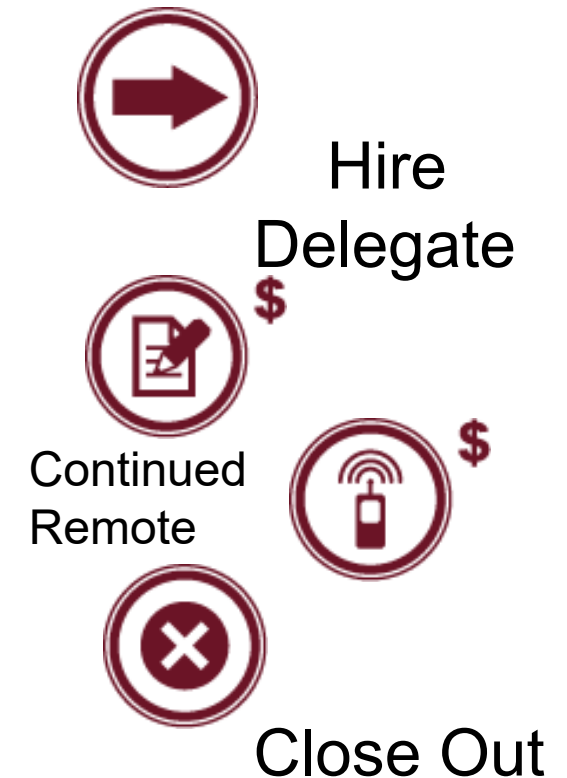
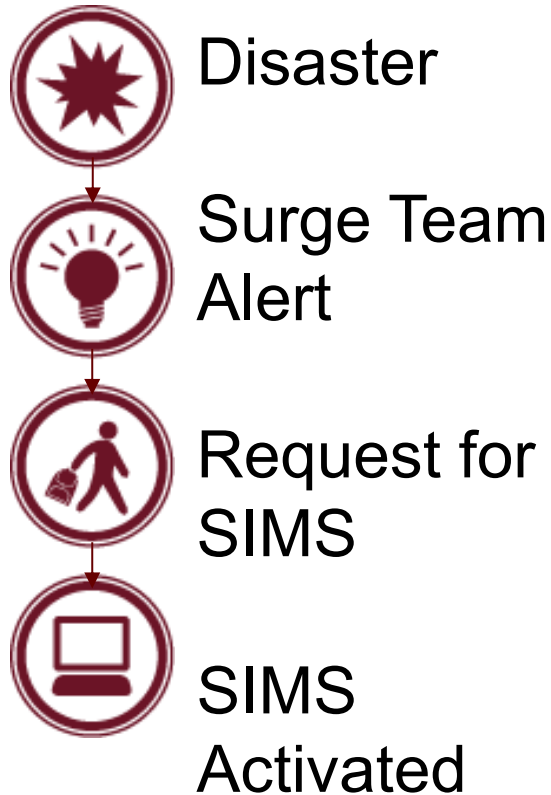
Activation



Response



Transition





# What support is provided?

## Secondary Data Collection



Datasets are compiled through research from secondary sources and then packaged for responders.

Example: [Liberia \(Jan 2015\)](#)

Planning prior to deployment and familiarization of context. Context and situational awareness for responders.

## SIMS Products

### Description & Purpose

### Opportunities

#### Base Maps



Detailed maps of the disaster area which help teams visualize the environment and put the response in geographic context.

Example: [Koidu, Sierra Leone \(Dec 2014\)](#)

Planning prior to deployment and familiarization with context. Ability to see individual communities for logistics planning. Ability to print and take on site visits as a tool for drawing.

#### Thematic Maps



Maps of the disaster area with information from various sources overlaid to support both situational analysis and decision-making.

Example: [Greece \(Dec 2015\)](#)

Analyze data from different sources. Visualize projections to plan for resource allocation. Planning for and reporting on relief distributions. Provide leadership with visual of needs and response plans.

#### Interactive Web Maps



Online maps that offer the ability to manipulate layers and leverage different sets of data quickly in real time.

Example: [Vanuatu \(Apr 2015\)](#)

Coordinate response activities by different global ERUs. Provide holistic view of response activities across the Movement and analyze outstanding gaps in response.

#### Dashboards

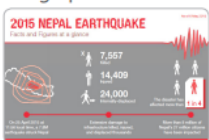


Interactive visualisation of key indicators which aid understanding of the situation and progression of the response.

Example: [Ethiopia Drought \(Nov 2015\)](#)

Analysis tool for evaluating progress towards meeting the needs in a response. Communicate the strategic priorities of a response and the actions by sector.

#### Infographics



Graphic representation of data for easy understanding on an ad hoc basis.

Example: [Nepal Earthquake \(May 2015\)](#)

Visualize aspects of response such as event timeline and regional profile. Visualize plan of action. Communications and reporting tool useful for fundraising and reporting on response activities.

## Data Analysis



Statistical trend analysis is conducted by IM specialist with graphs, maps or data tables produced to support decision-making.

Example: [Sierra Leone \(Oct 2014\)](#)

Real time support to operations to enhance data-driven decisions. Visualization of reporting data for easy consumption.

## Data Management



Remote or deployed specialist in IM supports the response team with collecting, collating and sharing data for operations.

Example: [Philippines \(Jan 2014\)](#)

Getting data into a useable format. Improved coordination and reporting in response. Enhancing coordination with external agencies and partners.

## IM Training & Processes



IM specialist in the field supports staff to improve the IM and sets up relevant processes and systems, particularly during a response.

Example: [Nepal Earthquake \(Aug 2015\)](#)

Training for local staff and volunteers as well as response delegates from the IFRC. Improved data management during the operation. Enhanced data driven decision-making.

## Mobile Data Collection

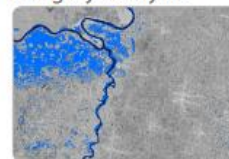


Survey training provided on how to support data collection in the field using mobile tools.

Example: [Philippines \(Apr 2014\)](#)

Getting data into a useable format. Rapid data collection and improved accuracy in primary data.

## Imagery Analysis



Overview of terrain produced with satellite imagery.

Example: [Balkan Floods \(May 2014\)](#)

Support from online community through crowd-sourcing. Rapid initial assessments of disaster impact or extent.

December 2015

Source: IFRC Disaster Crisis Management Unit

Source: IFRC Disaster Crisis Management Unit



International Federation of Red Cross and Red Crescent Societies  
Fédération internationale des Sociétés de la Croix-Rouge et du Croissant-Rouge  
Federación Internacional de Sociedades de la Cruz Roja y de la Media Luna Roja  
الاتحاد الدولي لجمعيات الصليب الأحمر والهلال الأحمر



# What support is provided? - Activity

## SIMS Cookbook (still in development)

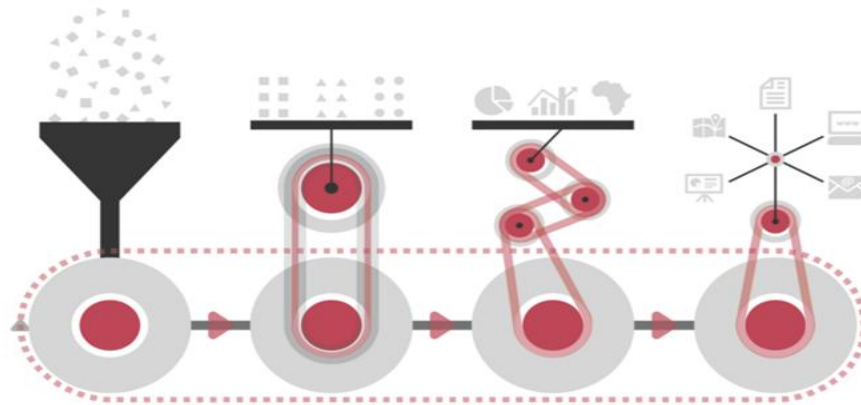
This is a document that will be handed to the FACT team lead to assist in their engagement with SIMS.

There are many blank spaces in the document. In small groups or pairs, try and fill in the gaps. You would have not seen this document before. What ideas do you have?

We will then go through this as a group.

# Walkthrough

## Product Cookbook



Products by **SIMS**. Supported by the American Red Cross and British Red Cross.

Press right on your keyboard or swipe right to navigate.



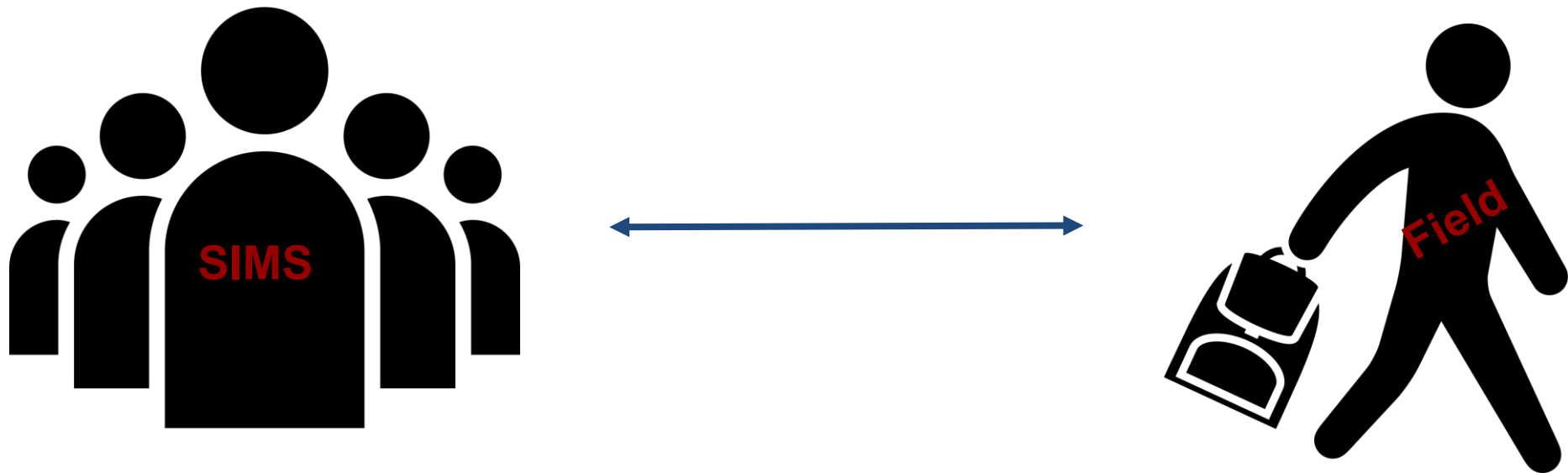
International Federation of Red Cross and Red Crescent Societies  
Fédération internationale des Sociétés de la Croix-Rouge et du Croissant-Rouge  
Federación Internacional de Sociedades de la Cruz Roja y de la Media Luna Roja  
الاتحاد الدولي لجمعيات الصليب الأحمر والهلال الأحمر



DATA PLAYBOOK: SLIDEDECK 15

# Factors for SIMS success

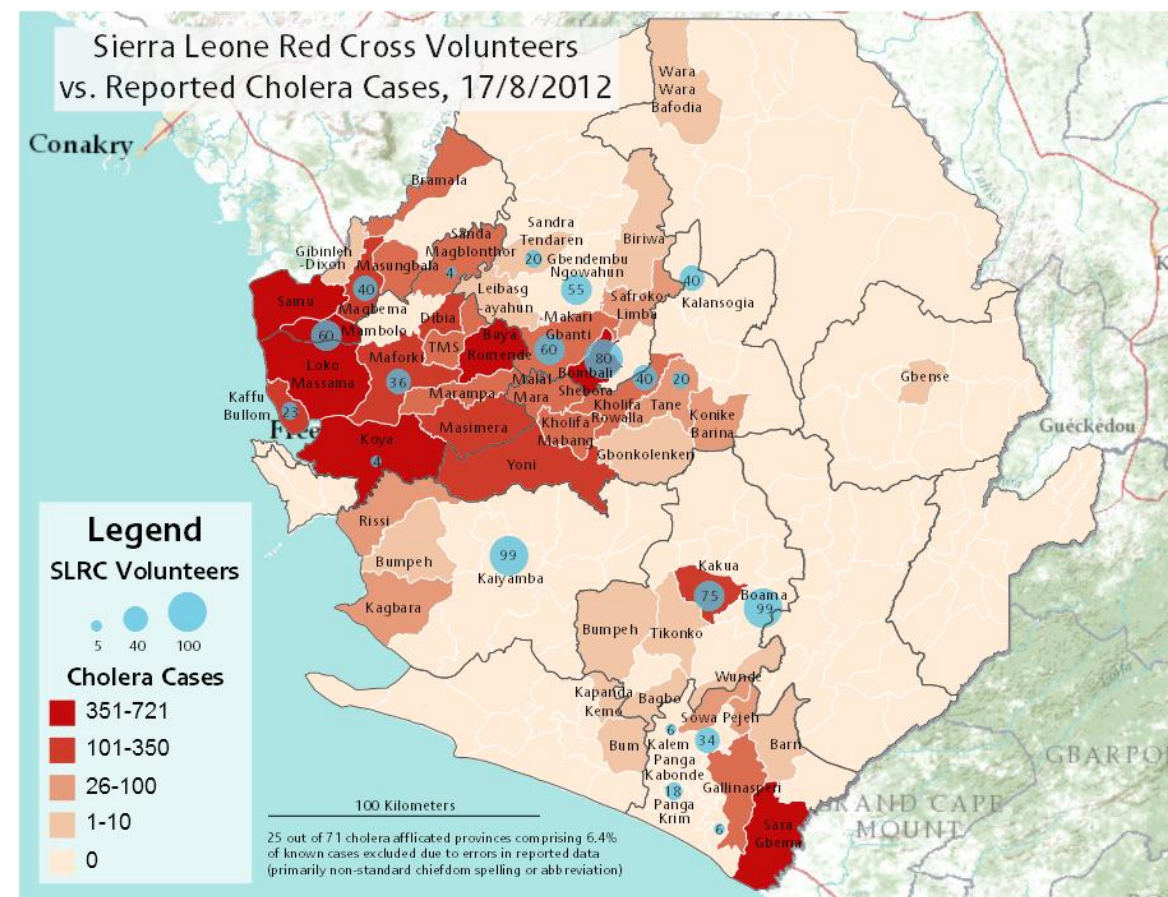
## Discussion



Information Management comes first!

Good IM leads to effective use of Geographic Information Systems (GIS) in response

	A	B	C	D	E	F	G	H	I	J
1	District	Chiefdom	Cases	Date		Cases	Date		Cases	Date
2	Bo	Bagbo		23/6/2012			23/7/2012		2	23/8/2012
3	Bo	Bumpeh		23/6/2012			23/7/2012		3	23/8/2012
4	Bo	Kakua	0	23/6/2012		16	23/7/2012		219	23/8/2012
5	Bo	Tikonko		23/6/2012			23/7/2012		3	23/8/2012
6	Bo	Wunde		23/6/2012			23/7/2012		3	23/8/2012
7	Bo	Baoma		23/6/2012			23/7/2012		1	23/8/2012
8	Bombali	Biriwa		23/6/2012			23/7/2012		1	23/8/2012
9	Bombali	Bombali Shebora		23/6/2012		4	23/7/2012		586	23/8/2012
10	Bombali	Gbendembu Ngowahun		23/6/2012			23/7/2012		17	23/8/2012
11	Bombali	Gibanti Kamaranka		23/6/2012			23/7/2012		4	23/8/2012
12	Bombali	Leibasgayahun		23/6/2012			23/7/2012		1	23/8/2012
13	Bombali	Makari Gbanti		23/6/2012			23/7/2012		51	23/8/2012
14	Bombali	Safroko Limba		23/6/2012		1	23/7/2012		16	23/8/2012
15	Bombali	Sandra Tendaren		23/6/2012			23/7/2012		5	23/8/2012
16	Bombali	Kpakie Massabom		23/6/2012			23/7/2012		1	23/8/2012
17	Bombali	Sanda Loko		23/6/2012			23/7/2012		2	23/8/2012
18	Bombali	(blank)		23/6/2012			23/7/2012		8	23/8/2012
19	Bonthe	Benducha		23/6/2012			23/7/2012			23/8/2012
20	Bonthe	Bum		23/6/2012			23/7/2012		6	23/8/2012
21	Bonthe	Dema		23/6/2012			23/7/2012			23/8/2012
22	Bonthe	Imperi		23/6/2012			23/7/2012		5	23/8/2012
23	Bonthe	Jong		23/6/2012			23/7/2012			23/8/2012
24	Bonthe	Kapanda Kemo		23/6/2012			23/7/2012		12	23/8/2012
25	Bonthe	Kwamebai Krim		23/6/2012			23/7/2012			23/8/2012
26	Bonthe	Nongoba Bullom		23/6/2012			23/7/2012		4	23/8/2012
27	Bonthe	Sittia		23/6/2012			23/7/2012		3	23/8/2012
28	Bonthe	Sogbini		23/6/2012			23/7/2012		9	23/8/2012
29	Bonthe	Yawbeke		23/6/2012			23/7/2012		2	23/8/2012
30	Kambia	Bramala	40	23/6/2012		46	23/7/2012		48	23/8/2012
31	Kambia	Gibinleh-Dixon		23/6/2012			23/7/2012		6	23/8/2012
32	Kambia	Magbema	236	23/6/2012		271	23/7/2012		341	23/8/2012
33	Kambia	Mambolo	253	23/6/2012		283	23/7/2012		372	23/8/2012
34	Kambia	Masungbala	21	23/6/2012		21	23/7/2012		34	23/8/2012
35	Kambia	Samu	336	23/6/2012		336	23/7/2012		419	23/8/2012
36	Kono	Gbense		23/6/2012			23/7/2012		4	23/8/2012
37	Kono	Goroma Kono		23/6/2012			23/7/2012		4	23/8/2012
38	Kono	Nimikoro		23/6/2012			23/7/2012		1	23/8/2012
39	Kono	Tankoro		23/6/2012			23/7/2012		1	23/8/2012
40	Moyamba	Bumpeh		23/6/2012			23/7/2012		16	23/8/2012
41	Moyamba	Kagbara		23/6/2012			23/7/2012		21	23/8/2012
42	Moyamba	Kaiyamba		23/6/2012			23/7/2012		5	23/8/2012



International Federation of Red Cross and Red Crescent Societies  
Fédération internationale des Sociétés de la Croix-Rouge et du Croissant-Rouge  
Federación Internacional de Sociedades de la Cruz Roja y de la Media Luna Roja  
الاتحاد الدولي لجمعيات الصليب الأحمر والهلال الأحمر



# Life cycle of a SIMS activation



International Federation of Red Cross and Red Crescent Societies  
Fédération internationale des Sociétés de la Croix-Rouge et du Croissant-Rouge  
Federación Internacional de Sociedades de la Cruz Roja y de la Media Luna Roja  
الاتحاد الدولي لجمعيات الصليب الأحمر والهلال الأحمر



# Example operations and how SIMS works

**SIMS Nepal EQ 2015 - ACTIVATED** Private

**Storage / Data**

- Leaders vow to adjust provincial boundaries
- New Admin Boundaries
- \*Google Drive\* - SIMS - For Work in Progress, Templates and Ongoing tasks
- \*Dropbox\* - Shared with FACT -

**To Do - Backlog**

- Infographic detailing 15,000 rupees unconditional/conditional cash grant
- Map-making within an excel spreadsheet for Nepal to VDC/Muni level
- [P] \*\*\* INTERNAL - Response - Working Areas (District + VDC)
- PMER - Indicator tracking & M&E plan doc
- General Nepal info products

**Ongoing**

- Update mapfolio
- Reporting the the Cash Cluster
- Recovery Data Template -> Maps/Dash
- HIS Data for Dashboard
- \*\*INTERNAL - Movement Team Tracker map

**Doing**

- Shelter Cluster Gorkha
- Geocoding PyScript
- Create dropbox structure for recovery

**Done - September 2015**

- Nigel Ede - Recovery Map
- Bilateral BRC: Alastair Punch - Evaluation Summary Maps
- David Dalgardo - Shelter Cluster DEM map - Winterisation

**Done - Aug 2015**

- Cash Map - Marga
- District Level Data Template
- Emergency Health ERU - Reconstruction District Maps

**Done - July 2015**

- MSM GPS Points Simple - Nancy Kourduli
- Order Singati ERU a smartphone
- Powerpoint maps of affected districts - add to the movement email



International Federation of Red Cross and Red Crescent Societies  
Fédération internationale des Sociétés de la Croix-Rouge et du Croissant-Rouge  
Federación Internacional de Sociedades de la Cruz Roja y de la Media Luna Roja  
الاتحاد الدولي لجمعيات الصليب الأحمر والهلال الأحمر

# Collaboration



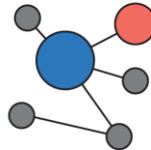
OCHA



International Federation  
of Red Cross and Red Crescent Societies



UNHCR  
The UN Refugee Agency



HDX  
Humanitarian  
Data Exchange

slack  
Governments



Network  
Digital Humanitarian Network

Humanitarian

RESPONSE



Google Drive



International Federation of Red Cross and Red Crescent Societies  
Fédération internationale des Sociétés de la Croix-Rouge et du Croissant-Rouge  
Federación Internacional de Sociedades de la Cruz Roja y de la Media Luna Roja  
الاتحاد الدولي لجمعيات الصليب الأحمر والهلال الأحمر



# Ebola



International Federation of Red Cross and Red Crescent Societies  
Fédération internationale des Sociétés de la Croix-Rouge et du Croissant-Rouge  
Federación Internacional de Sociedades de la Cruz Roja y de la Media Luna Roja  
الاتحاد الدولي لجمعيات الصليب الأحمر والهلال الأحمر

	A	B	C	D	E	F	G	H	I	J	K	L	M	N	O	P	Q	R	S	T	U	V	W
1	Create Database				Guinea																		
2					GIN001	GIN005	GIN002	GIN003	GIN003	GIN003	GIN008	GIN008	GIN004	GIN004	GIN007	GIN008	GIN008	GIN005	GIN005	GIN004	GIN005	GIN001	GIN007
3					GIN001001	GIN005005	GIN002001	GIN003001	GIN003002	GIN003004	GIN008004	GIN008002	GIN004003	GIN004005	GIN007003	GIN008005	GIN008006	GIN005002	GIN005003	GIN004002	GIN005001	GIN001002	GIN007001
4				NATIONAL	Boffa	Télémélé	Conakry	Dabola	Dingirays	Kissidougou	Macenta	Guékédou	Kouroussa	Siguiré	Pita	Nzékéré	Yomou	Dubreka	Forecariah	Kerouane	Coyah	Boke	Dalaba
573					-	-	-	-	-	-	-	-	-	-	-	-	-	-	CHANGE	-	-	-	-
574			Cases Change		-	-	-	-	-	-	-	-	-	-	-	-	-	-	CHANGE	-	-	-	-
575					-	-	-	-	-	-	-	-	-	-	-	-	-	-	CHANGE	-	-	-	-
576	85	####	Total Cases	3788	53	43	602	13	1	136	744	382	20	34	8	256	11	159	478	161	245	36	9
577			Total Deaths	2525	43	20	316	13	1	107	501	316	13	24	4	181	5	100	333	98	139	22	2
578			New Cases	5	0	0	1	0	0	0	0	0	0	0	0	0	0	0	4	0	0	0	0
579			New Deaths	1	0	0	1	0	0	0	0	0	0	0	0	0	0	0	0	0	0	0	0
580			Mortality rate	67%	81%	47%	52%	100%	100%	79%	67%	83%	65%	71%	50%	71%	45%	63%	70%	61%	57%	61%	22%
581			Total Confirmed Cases	3333	36	40	565	8	1	100	717	270	18	26	7	213	11	146	423	160	237	32	9
582			New Confirmed Cases	4	0	0	2	0	1	0	0	0	0	0	0	0	0	0	1	0	0	0	0
583					-	-	-	-	-	-	-	-	-	-	-	-	-	-	CHANGE	-	-	-	-
584			Confirmed Cases in Past 21 Days	21 Days	NO_21_CASE	NO_21_CASE	YES_21_CASE	NO_21_CASE	YES_21_CASE	NO_21_CASE	NO_21_CASE	YES_21_CASE	NO_21_CASE	NO_21_CASE	NO_21_CASE	NO_21_CASE	NO_21_CASE	YES_21_CASE	NO_21_CASE	YES_21_CASE	NO_21_CASE	NO_21_CASE	NO_21_CASE
585			Cases in Past 21 Days		NO_21_CASE	NO_21_CASE	YES_21_CASE	NO_21_CASE	NO_21_CASE	NO_21_CASE	NO_21_CASE	NO_21_CASE	NO_21_CASE	NO_21_CASE	NO_21_CASE	NO_21_CASE	NO_21_CASE	YES_21_CASE	NO_21_CASE	YES_21_CASE	YES_21_CASE	YES_21_CASE	NO_21_CASE
586					-	-	CHANGE	-	CHANGE	-	-	-	-	-	-	-	-	-	CHANGE	-	-	-	-
587			Cases Change		-	-	CHANGE	-	CHANGE	-	-	-	-	-	-	-	-	-	CHANGE	-	-	-	-
588					-	-	-	-	-	-	-	-	-	-	-	-	-	-	CHANGE	-	-	-	-
589	86	####	Total Cases	3797	53	43	609	13	1	136	744	382	20	34	8	256	11	160	478	161	244	37	9
590			Total Deaths	2528	43	20	318	13	1	107	501	316	13	24	4	181	5	101	333	98	139	22	2
591			New Cases	10	0	0	7	0	0	0	0	0	0	0	0	0	0	1	0	0	0	1	0
592			New Deaths	3	0	0	2	0	0	0	0	0	0	0	0	0	0	1	0	0	0	0	0
593			Mortality rate	67%	81%	47%	52%	100%	100%	79%	67%	83%	65%	71%	50%	71%	45%	63%	70%	61%	57%	59%	22%
594			Total Confirmed Cases	3336	36	40	568	8	0	100	717	270	18	26	7	213	11	147	423	160	237	32	9
595			New Confirmed Cases	4	0	0	3	0	0	0	0	0	0	0	0	0	0	1	0	0	0	0	0
596					-	-	-	-	-	-	-	-	-	-	-	-	-	-	CHANGE	-	-	-	-
597			Confirmed Cases in Past 21 Days	21 Days	NO_21_CASE	YES_21_CASE	YES_21_CASE	YES_21_CASE	YES_21_CASE	YES_21_CASE	YES_21_CASE	YES_21_CASE	YES_21_CASE	YES_21_CASE	YES_21_CASE	YES_21_CASE	YES_21_CASE	YES_21_CASE	YES_21_CASE	YES_21_CASE	YES_21_CASE	YES_21_CASE	YES_21_CASE
598			Cases in Past 21 Days		NO_21_CASE	NO_21_CASE	YES_21_CASE	NO_21_CASE	NO_21_CASE	NO_21_CASE	NO_21_CASE	NO_21_CASE	NO_21_CASE	NO_21_CASE	NO_21_CASE	NO_21_CASE	NO_21_CASE	YES_21_CASE	YES_21_CASE	NO_21_CASE	NO_21_CASE	YES_21_CASE	NO_21_CASE
599					-	-	CHANGE	-	CHANGE	-	-	-	-	-	-	-	-	-	CHANGE	-	-	-	-
600			Cases Change		-	-	CHANGE	-	CHANGE	-	-	-	-	-	-	-	-	-	CHANGE	-	-	-	-
601					-	-	-	-	-	-	-	-	-	-	-	-	-	-	CHANGE	-	-	-	-
602	86	####	Total Cases	3793	53	43	610	13	1	136	744	382	20	34	8	256	11	160	475	161	244	36	9
603			Total Deaths	2529	43	20	319	13	1	107	501	316	13	24	4	181	5	101	333	98	139	22	2
604			New Cases	1	0	0	1	0	0	0	0	0	0	0	0	0	0	0	0	0	0	0	0
605			New Deaths	1	0	0	1	0	0	0	0	0	0	0	0	0	0	0	0	0	0	0	0
606			Mortality rate	67%	81%	47%	52%	100%	100%	79%	67%	83%	65%	71%	50%	71%	45%	63%	70%	61%	57%	61%	22%
607			Total Confirmed Cases	3337	36	40	569	8	0	100	717	270	18	26	7	213	11	147	423	160	237	32	9
608			New Confirmed Cases	1	0	0	1	0	0	0	0	0	0	0	0	0	0	0	0	0	0	0	0
609					-	-	-	-	-	-	-	-	-	-	-	-	-	-	CHANGE	-	-	-	-
610			Confirmed Cases in Past 21 Days	21 Days	NO_21_CASE	NO_21_CASE	YES_21_CASE	NO_21_CASE	YES_21_CASE	NO_21_CASE	NO_21_CASE	NO_21_CASE	NO_21_CASE	NO_21_CASE	NO_21_CASE	NO_21_CASE	NO_21_CASE	YES_21_CASE	YES_21_CASE	NO_21_CASE	NO_21_CASE	NO_21_CASE	NO_21_CASE
611			Cases in Past 21 Days		NO_21_CASE	NO_21_CASE	YES_21_CASE	NO_21_CASE	NO_21_CASE	NO_21_CASE	NO_21_CASE	NO_21_CASE	NO_21_CASE	NO_21_CASE	NO_21_CASE	NO_21_CASE	NO_21_CASE	YES_21_CASE	YES_21_CASE	NO_21_CASE	NO_21_CASE	YES_21_CASE	NO_21_CASE
612					-	-	CHANGE	-	-	-	-	-	-	-	-	-	-	-	CHANGE	-	-	-	-
613			Cases Change		-	-	CHANGE	-	-	-	-	-	-	-	-	-	-	-	CHANGE	-	-	-	-
614					-	-	-	-	-	-	-	-	-	-	-	-	-	-	CHANGE	-	-	-	-
615	86	####	Total Cases	3792	53	43	609	13	1	136	744	382	20	34	8	256	11	160	475	161	244	36	9
616			Total Deaths	2530	43	20	320	13	1	107	501	316	13	24	4	181	5	101	333	98	139	22	2
617			New Cases	0	0	0	0	0	0	0	0	0	0	0	0	0	0	0	0	0	0	0	0
618			New Deaths	1	0	0	1	0	0	0	0	0	0	0	0	0	0	0	0	0	0	0	0
619			Mortality rate	67%	81%	47%	53%	100%	100%	79%	67%	83%	65%	71%	50%	71%	45%	63%	70%	61%	57%	61%	22%
620			Total Confirmed Cases	3338	36	40	570	8	0	100	717	270	18	26	7	213	11	147	423	160	237	32	9
621			New Confirmed Cases	1	0	0	1	0	0	0	0	0	0	0	0	0	0	0	0	0	0	0	0
622					-	-	-	-	-	-	-	-	-	-	-	-	-	-	CHANGE	-	-	-	-
623			Confirmed Cases in Past 21 Days	21 Days	NO_21_CASE	NO_21_CASE	YES_21_CASE	NO_21_CASE	NO_21_CASE	NO_21_CASE	NO_21_CASE	NO_21_CASE	NO_21_CASE	NO_21_CASE	NO_21_CASE	NO_21_CASE	NO_21_CASE	YES_21_CASE	NO_21_CASE	NO_21_CASE	NO_21_CASE	NO_21_CASE	NO_21_CASE
624			Cases in Past 21 Days		NO_21_CASE	NO_21_CASE	YES_21_CASE	NO_21_CASE	NO_21_CASE	NO_21_CASE	NO_21_CASE	NO_21_CASE	NO_21_CASE	NO_21_CASE	NO_21_CASE	NO_21_CASE	NO_21_CASE	YES_21_CASE	NO_21_CASE	NO_21_CASE	NO_21_CASE	YES_21_CASE	NO_21_CASE
625					-	-	-	-	-	-	-	-	-	-	-	-	-	-	CHANGE	-	-	-	-
626			Cases Change		-	-	-	-	-	-	-	-	-	-	-	-	-	-	CHANGE	-	-	-	-
627					-	-	-	-	-	-	-	-	-	-	-	-	-	-	CHANGE	-	-	-	-
628					-	-	-	-	-	-	-	-	-	-	-	-	-	-	CHANGE	-	-	-	-
629					-	-	-	-	-	-	-	-	-	-	-	-	-	-	CHANGE	-	-	-	-
630					-	-	-	-	-	-	-	-	-	-	-	-	-	-	CHANGE	-	-	-	-
631					-	-	-	-	-	-	-	-	-	-	-	-	-	-	CHANGE	-	-	-	-
632					-	-	-	-	-	-	-	-	-	-	-	-	-	-	CHANGE	-	-	-	-







# Data is rarely perfect

Name	Date modified	Type	Size
GUINEA_EBOLA_SITREP N 433 DU 22_Juin...	26/06/2015		
GUINEA_EBOLA_SITREP N 454 DU 13_Juil...	16/07/2015		
GUINEA_EBOLA_SITREP N 461 DU 20_Juil...	23/07/2015		
GUINEA_EBOLA_SITREP N 468 DU 27_Juil...	31/07/2015		
Liberia SitRep no. 413 July 2 2015 final	16/07/2015		
Liberia SitRep no. 416 for July 5 2015 final	16/07/2015		
Liberia SitRep no. 417 for July 6, 2015	16/07/2015		
Liberia SitRep no. 418 for July 7 2015	16/07/2015		
Liberia SitRep no. 419 for July 8 2015	16/07/2015		
Liberia SitRep no. 420 for July 9 2015	16/07/2015		
Liberia SitRep no. 421 for July 10 2015	16/07/2015		
Liberia SitRep no. 422 for July 11 2015	16/07/2015		
Liberia SitRep no. 423 for July 12 2015	16/07/2015		
Liberia SitRep no. 424 for July 13 2015	23/07/2015		
Liberia SitRep no. 425 for July 14 2015	23/07/2015		
Liberia SitRep no. 426 for July 15 2015	23/07/2015		
Sierra-Leone-EVD-National-Sit-Rep_Vol...	26/06/2015		
Sierra-Leone-EVD-National-Sit-Rep_Vol...	26/06/2015		
Sierra-Leone-EVD-National-Sit-Rep_Vol...	16/07/2015		
Sierra-Leone-EVD-National-Sit-Rep_Vol...	16/07/2015		

Guinée - Epidémie de la Maladie à virus Ebola		Données épidémiologiques, Ebola, Guinée 13/07/2015	
Description	Total	Guinée	Guinée
Nouveaux cas enregistrés ce jour*	4	1	1
Nouveaux Cas suspects	0	0	0
Nouveaux Cas Probables	0	0	0
Nouveaux Cas confirmés	0	0	0
Total des nouveaux cas enregistrés ce jour	4	1	1
Cumul des cas	11	2	2
Total des Cas suspects	490	39	39
Total des Cas Probables	270	39	39
Total des Cas confirmés	2004	340	340
Cumul des cas confirmés, probables et suspects	2004	340	340
Décès	0	0	0
Nouveaux décès confirmés ce jour*	0	0	0
Nouveaux décès probables ce jour*	0	0	0
Total des décès probables	270	39	39
Total des décès confirmés	2004	340	340
Cumul des décès (probables et confirmés)	2004	340	340
Total des cas confirmés	2004	340	340
Agente de surte	0	0	0
Nouveaux cas confirmés enregistrés après le passage de l'agent de surte*	0	0	0
Cumul des cas confirmés après le passage de l'agent de surte	0	0	0
Cumul des cas probables après le passage de l'agent de surte	0	0	0
Cumul des cas confirmés et probables après le passage de l'agent de surte	0	0	0
Nouveaux décès enregistrés après le passage de l'agent de surte	0	0	0
Cumul des décès confirmés après le passage de l'agent de surte	0	0	0
Cumul des décès probables après le passage de l'agent de surte	0	0	0
Cumul des décès confirmés et probables après le passage de l'agent de surte	0	0	0
Admission et sortie CTE	4	2	2
Nouveaux admissions au CTE ce jour*	4	2	2
Nouveaux sorties des hôpitaux du CTE	0	0	0
Nombre total des sorties ce jour du CTE	0	0	0
Cumul des admissions au CTE	4	2	2
Cumul des sorties du CTE	0	0	0
Contacts	186	93	93
Nouveaux contacts enregistrés ce jour*	186	93	93
Nombre de contacts actifs ce jour	186	93	93
Nombre de contacts à suivre ce jour	186	93	93
Nombre de contacts à suivre ce jour	186	93	93
Pourcentage des contacts suivis (%)	100	100	100
Laboratoire	0	0	0
Nombre d'échantillons collectés ce jour	0	0	0
Nombre d'échantillons en cours de test	0	0	0
Total des échantillons testés	1027	514	514
Date de confirmation du dernier cas	13/07/2015	13/07/2015	13/07/2015

Admissions, Currently in Treatment, and Discharges: Montserrado

	Ebola Treatment Units				
	New admissions	Total Currently in treatment	Confirmed cases currently in treatment	Discharged Cured	Discharged as Not a Case
ELWA 2	0	10	2	0	0
Bong	0	1	0	0	0
Sinje	0	1	0	0	0
Ganta	0	0	0	0	0
Total	0	12	2	0	0

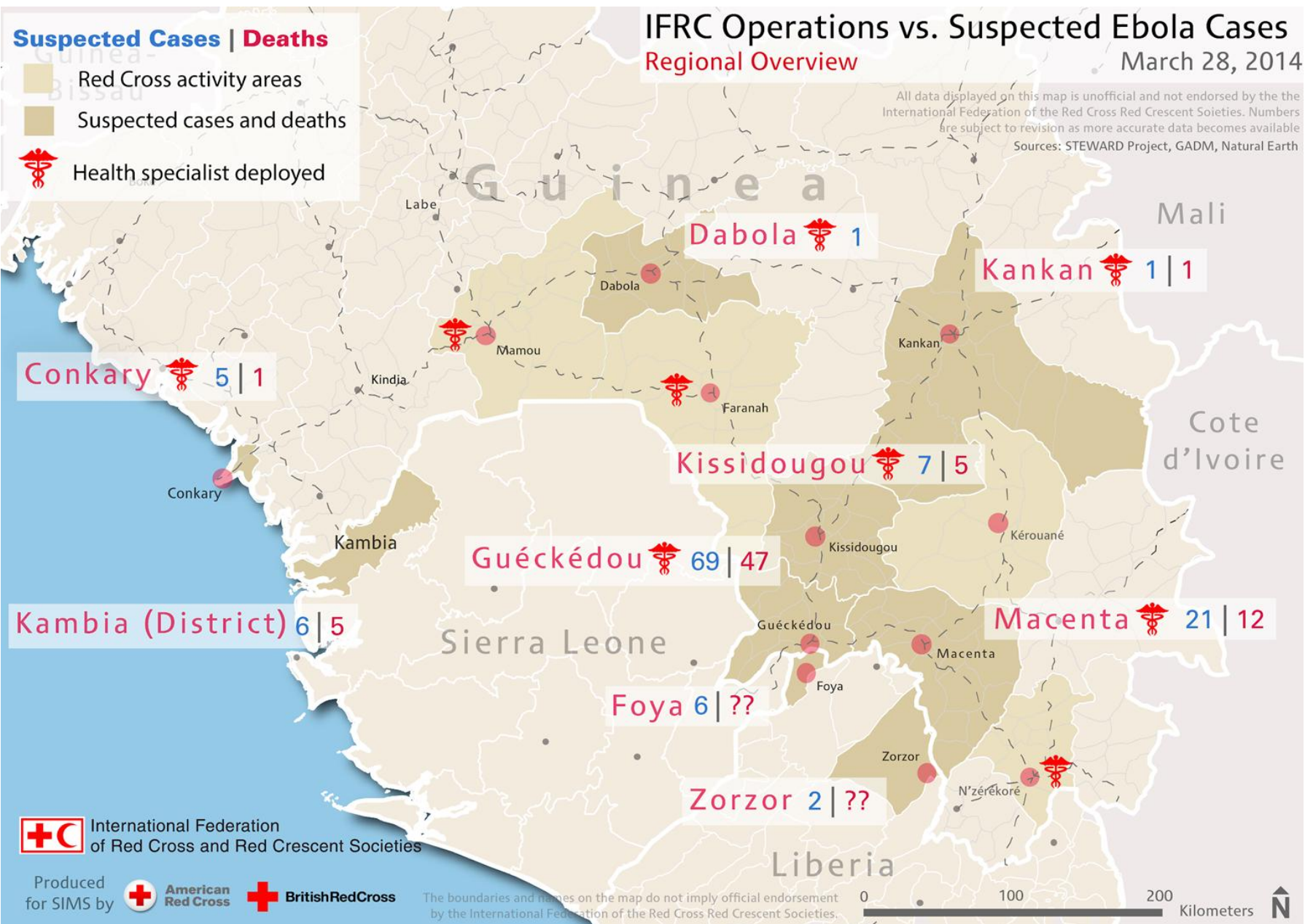
Powerpoint

PDFs



International Federation of Red Cross and Red Crescent Societies  
Fédération internationale des Sociétés de la Croix-Rouge et du Croissant-Rouge  
Federación Internacional de Sociedades de la Cruz Roja y de la Media Luna Roja  
الاتحاد الدولي لجمعيات الصليب الأحمر والهلال الأحمر





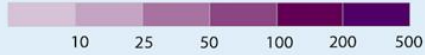
# West Africa Ebola Outbreak

New Cases

29 September 2014



New Cases (since 23 September 2014)



Affected Districts, no new cases

Country	New Cases	New Deaths
Guinea	95	36
Liberia	355	260
Sierra Leone	370	20

Total cases and deaths include "Probable/Suspected" and "Confirmed"

Sources: GADM, Natural Earth, STEWARD Project, Africa Albers Equal Area Conic Projection, WGS 1984; Guinea - Organisation mondiale de la Santé (25 Sept); Liberia - Ministry of Health and Social Welfare (26 Sept); Sierra Leone - Ministry of Health and Sanitation (29 Sept)

Information is subject to revision as more data becomes available

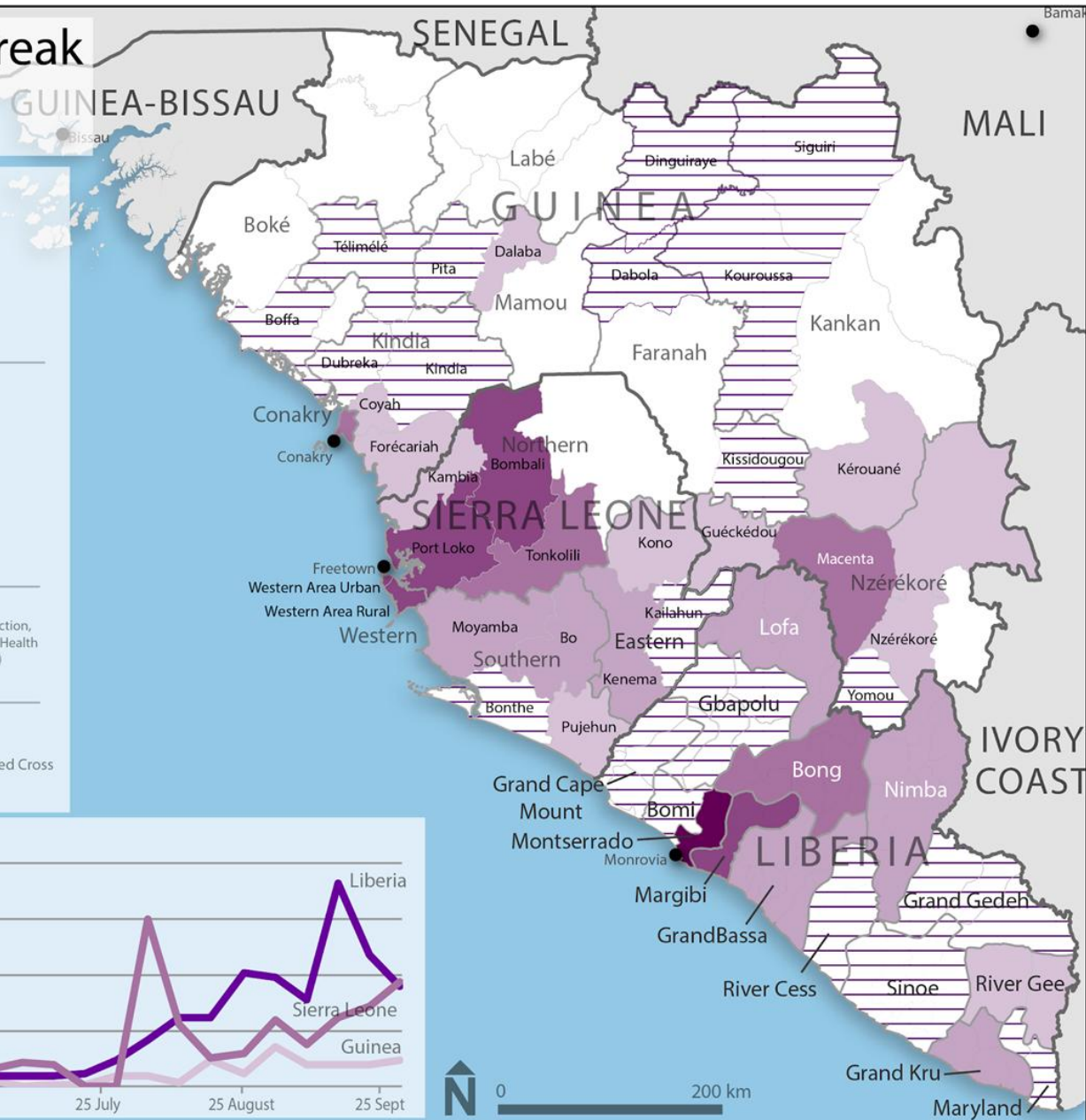
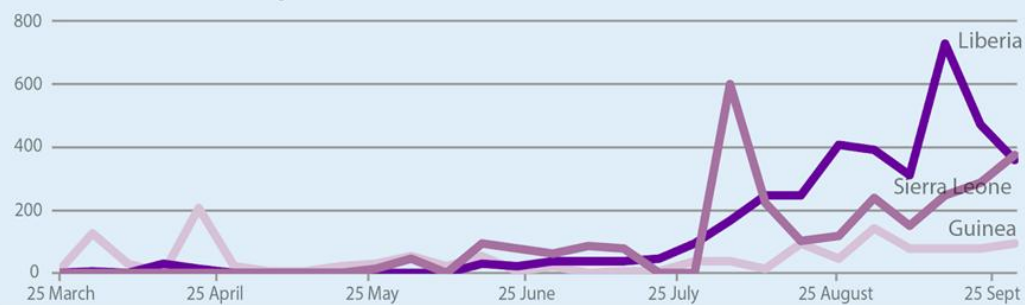


International Federation of Red Cross and Red Crescent Societies

Produced by SIMS, Supported by the American Red Cross and the British Red Cross

**FOR INTERNAL OPERATIONS ONLY**

New Cases across the region since March 25

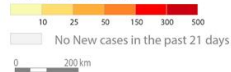


International Federation of Red Cross and Red Crescent Societies  
Fédération internationale des Sociétés de la Croix-Rouge et du Croissant-Rouge  
Federación Internacional de Sociedades de la Cruz Roja y de la Media Luna Roja  
الاتحاد الدولي لجمعيات الصليب الأحمر والهلال الأحمر



## West Africa Ebola Outbreak New Cases Fortnightly Time-Series

New cases (fortnightly)



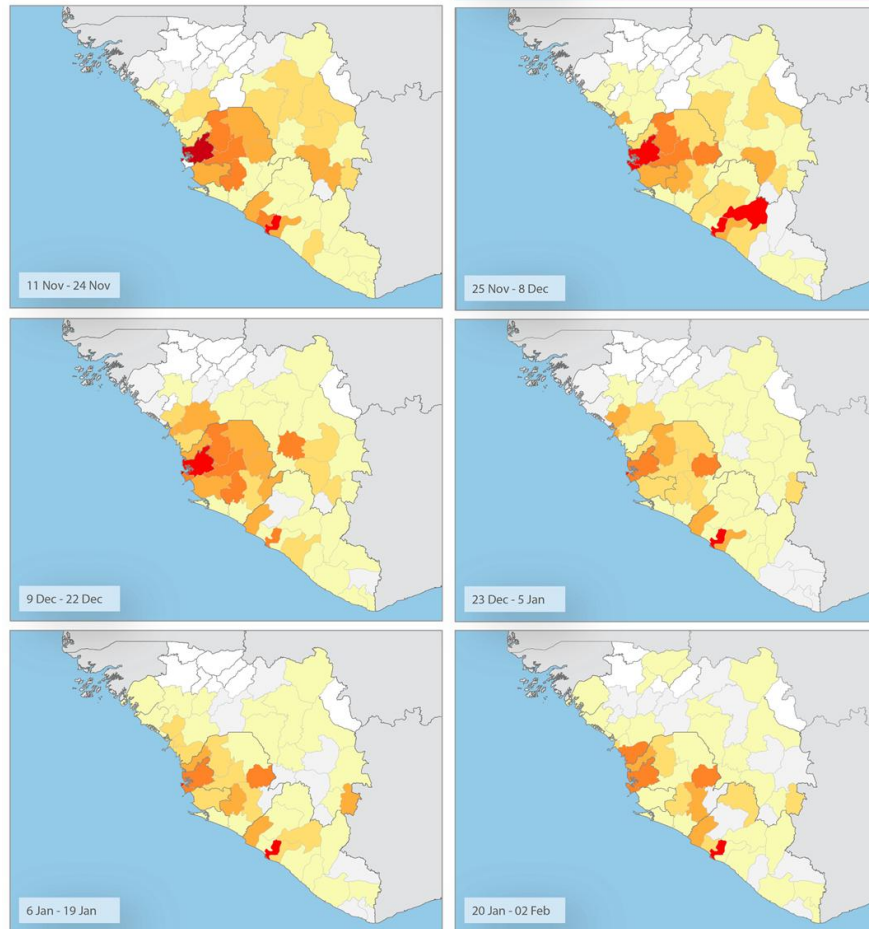
New cases and deaths include "Probable/Suspected" and "Confirmed"

Sources: GADM, Natural Earth, STEWARD Project, Africa Albers Equal Area Conic Projection, WGS 1984, Guinea - Organisation mondiale de la Santé; Liberia - Ministry of Health and Social Welfare; Sierra Leone - Ministry of Health and Sanitation

Information is subject to revision as more data becomes available. All changes in new cases need to be carefully assessed against the context on the ground. Large changes in the number of new cases can occur for a number of reasons apart from increased or diminished caseload.

GUIDE # EP-2014-000039-GIN/LBR/SLE

Produced by SIMS, Supported by the American Red Cross and the British Red Cross

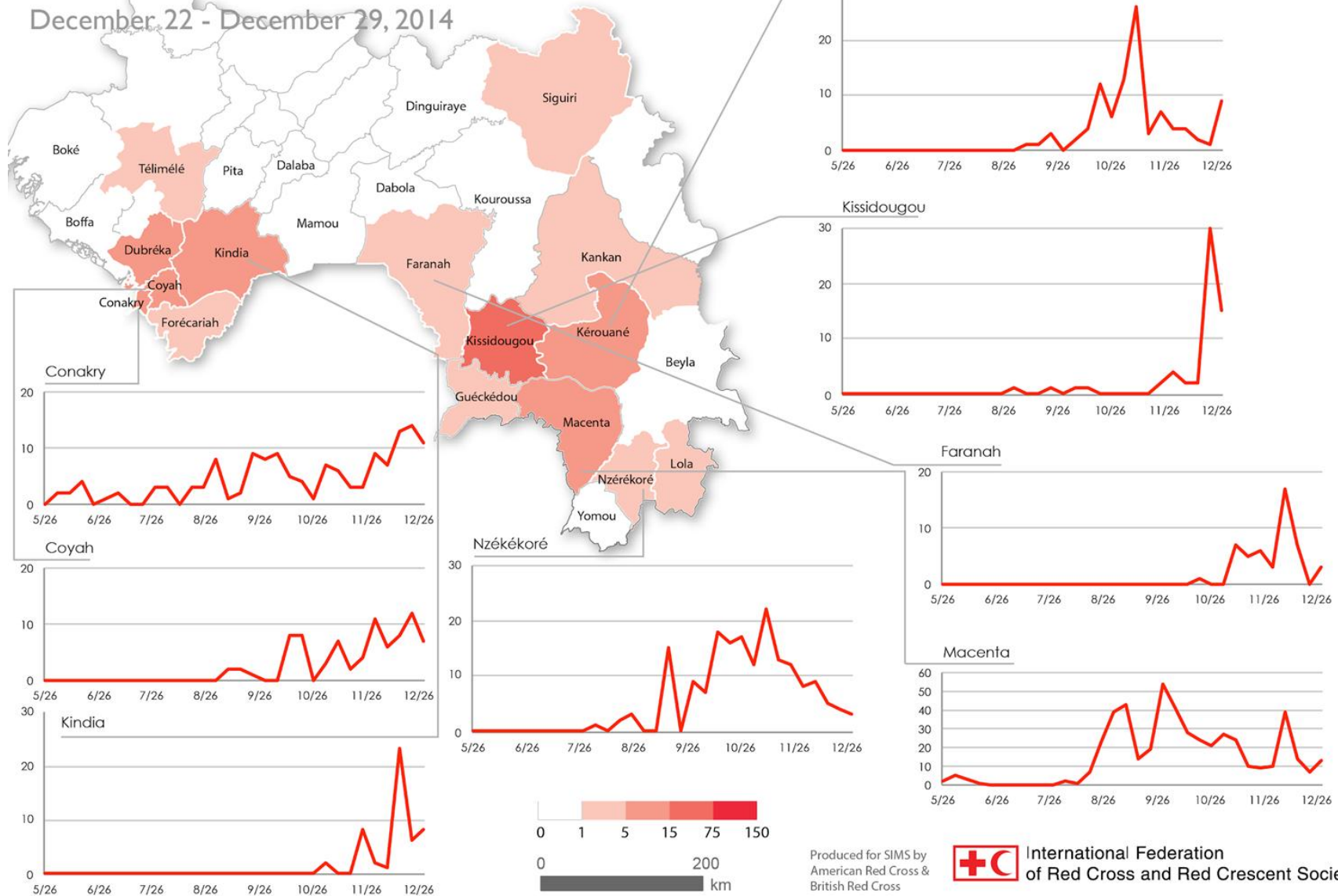


The maps used do not imply the expression of any opinion on the part of the International Federation of Red Cross and Red Crescent Societies or National Societies concerning the legal status of a territory or of its authorities.



# New Deaths in Guinea

December 22 - December 29, 2014



International Federation of Red Cross and Red Crescent Societies  
 Fédération internationale des Sociétés de la Croix-Rouge et du Croissant-Rouge  
 Federación Internacional de Sociedades de la Cruz Roja y de la Media Luna Roja  
 الاتحاد الدولي لجمعيات الصليب الأحمر والهلال الأحمر

Produced for SIMS by  
 American Red Cross &  
 British Red Cross

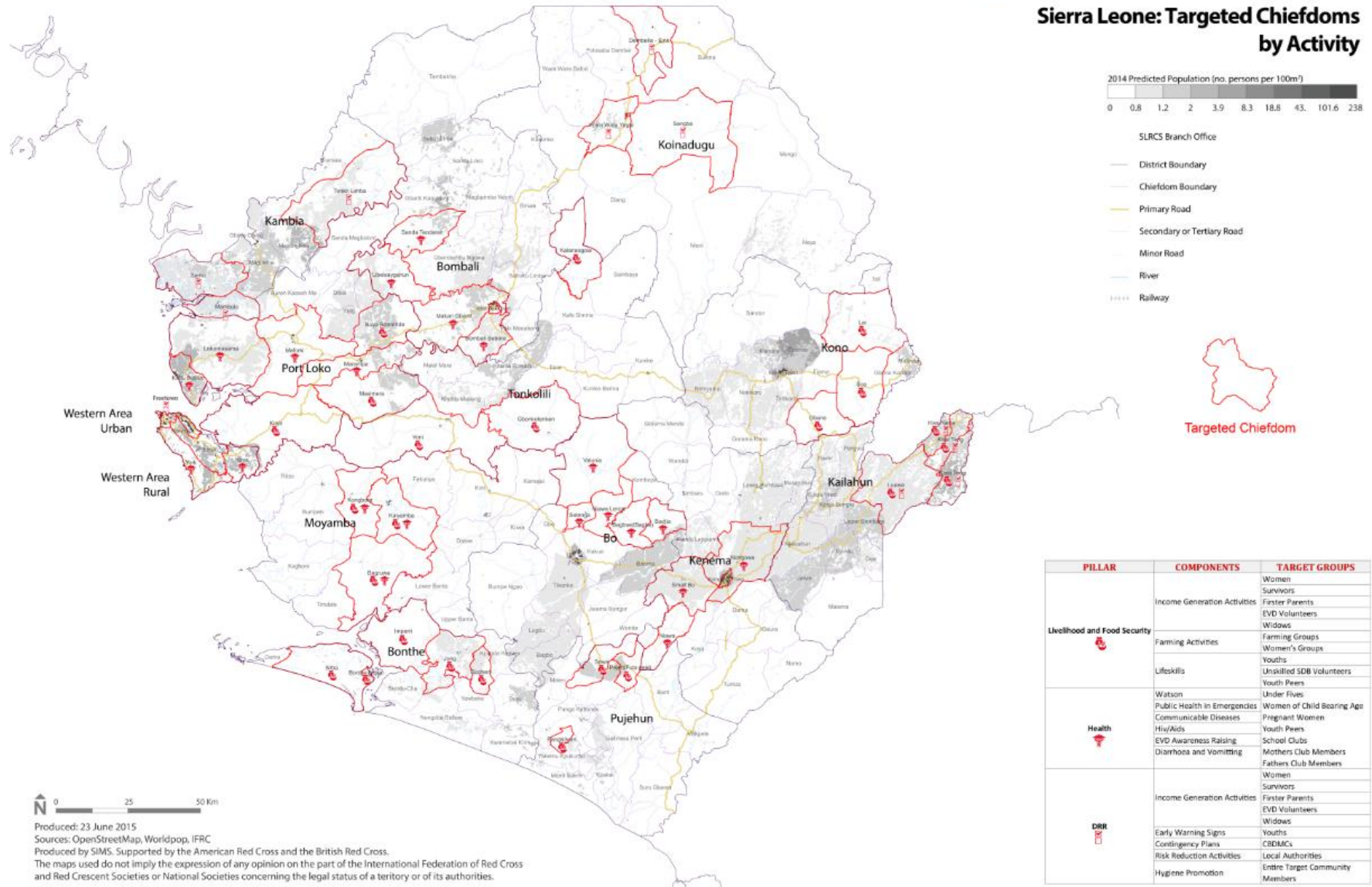


International Federation  
 of Red Cross and Red Crescent Societies



International Federation  
of Red Cross and Red Crescent Societies

## Sierra Leone: Targeted Chiefdoms by Activity



International Federation of Red Cross and Red Crescent Societies  
Fédération internationale des Sociétés de la Croix-Rouge et du Croissant-Rouge  
Federación Internacional de Sociedades de la Cruz Roja y de la Media Luna Roja  
الاتحاد الدولي لجمعيات الصليب الأحمر والهلال الأحمر





# Nepal



International Federation of Red Cross and Red Crescent Societies  
Fédération internationale des Sociétés de la Croix-Rouge et du Croissant-Rouge  
Federación Internacional de Sociedades de la Cruz Roja y de la Media Luna Roja  
الاتحاد الدولي لجمعيات الصليب الأحمر والهلال الأحمر

DATA PLAYBOOK: SLIDEDECK 15

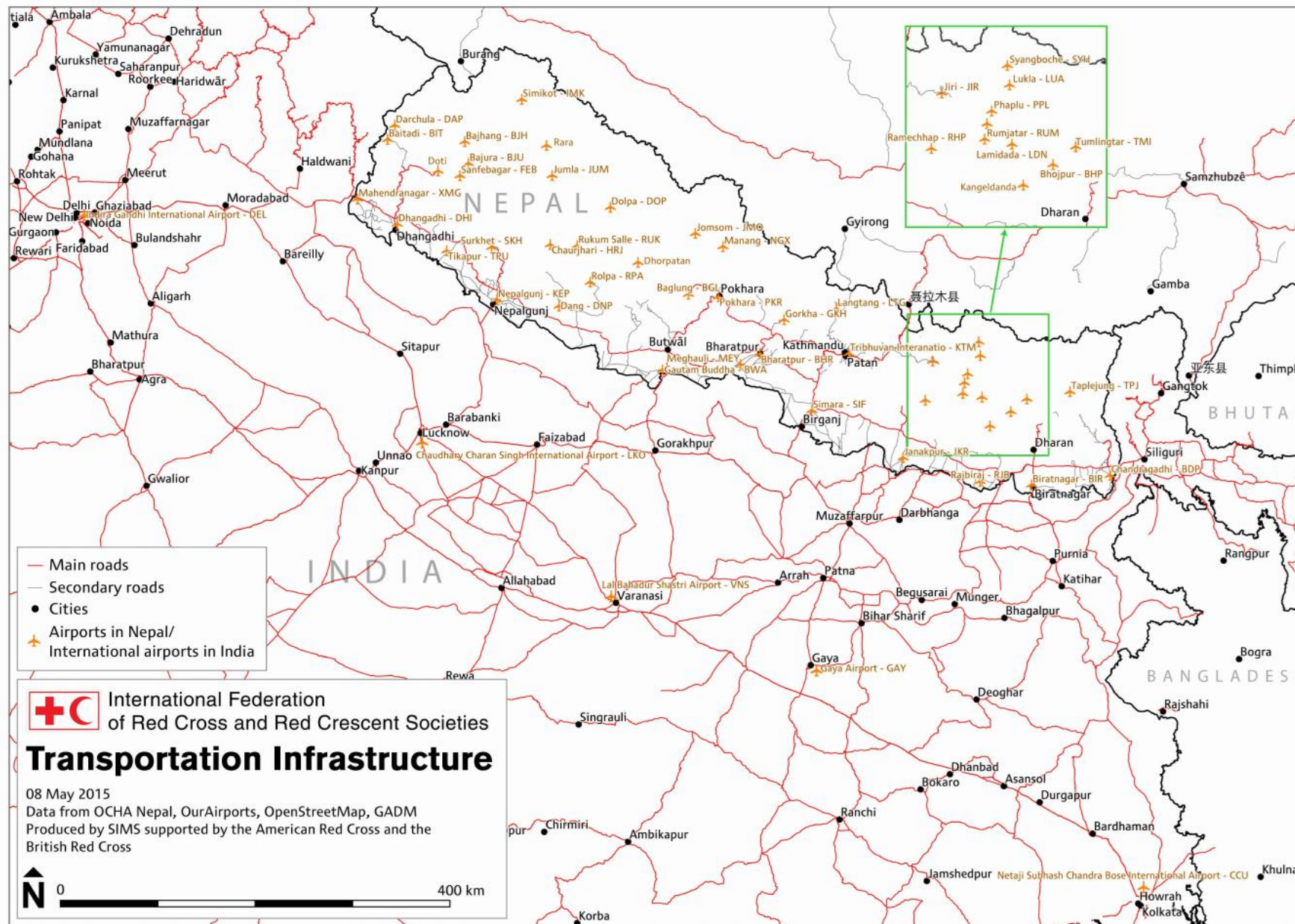


# Gap Analysis

D19																			
A	B	C	D	E	F	G	H	I	J	K	L	M	N	O	P	Q	R	S	T
1	XXX District Chapter																		
2	Warehouse Received																		
3	Field warehouse name:																		
4	<div> <div>+</div> <div>Nepal Red Cross Society</div> </div>																		
5	<div> <div>Received</div> <div>Dispatched</div> <div>Stock</div> </div>																		
6	Items	Sum of Amount received	Items	Sum of Amount dispatched	Items	Current stock													
7	Aqua Tab	330,000	Apron	2,001	10L Plastic Bucket with	3,930													
8	Baby Kits	450	Laundry soap	1,001	20L Plastic Bucket with	2,201													
9	Bamboo	190	Sugar	20	Apron	5,000													
10	Chiura	198	Tarpaulin	1,328	Appy juice	0													
11	Dal	56	Grand Total	4,350	Aqua Tab	330,000													
12	Hand washing soap	3,440			Baby Kits	450													
13	Hygiene Kit	1,343			Bamboo	190													
14	Juice	9			Big tent	0													
15	Kambal	3,000			Biscuit	18													
16	Mask	2,900			Biscuit ABC	0													
17	Mineral Water	131			Biscuit Butter Craker	0													
18	NFRJ Set	3,500			Biscuit Chocolate wafer	0													
19	Noodles	312			Biscuit Coconut	0													
20	ORS	5,000			Biscuit Glucose	0													
21	Rice	18			Biscuit Marie	0													
22	Salt	110			Biscuit Pine Apple	0													
23	Squatting Plates	57			Biscuit Sugar Free	0													
24	Sugar	1,020			Biscuit Top	0													
25	Tarpaulin	20,864			Blanket	0													
26	Tent	264			Brochures	0													
27	Toilet Paper	39			Brouchers	484													
28	Pheynel	260			Cap	0													
29	Purification powder (1mg )	80			Chiura	198													
30	Dead body management bag	60			Cotton	0													
31	Jerry Can 10L	50			Dal	56													
32	Shelter Kit	1			Dead body management	60													
33	Jerry Can 20L	50			Flag	0													
34	Biscuit	18			Flag RC	0													
35	20L Plastic Bucket with cover	2,201			Gloves	0													
36	10L Plastic Bucket with cover	3,930			Hand washing soap	3,440													
37	Plastic Mug 1L	4,750			Hulas Chiura	0													
38	Plastic Mug 2L	5,541			Hygiene Kit	1,343													
39	Laundry Soap	1,000			Jerry Can 10L	50													
40	Brouchers	484			Jerry Can 20L	50													
41	Apron	5,000			Joot Dori	0													
42	Grand Total	396,326			Juice	9													
43					Kambal	3,000													
44																			



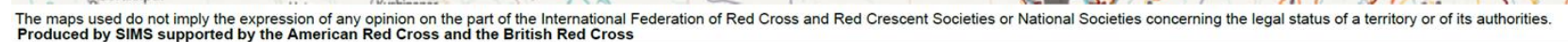
# Logistics



International Federation of Red Cross and Red Crescent Societies  
 Fédération internationale des Sociétés de la Croix-Rouge et du Croissant-Rouge  
 Federación Internacional de Sociedades de la Cruz Roja y de la Media Luna Roja  
 الاتحاد الدولي لجمعيات الصليب الأحمر والهلال الأحمر



## Transport to Most Affected Areas



# Health

## Nepal Earthquake 2015 HIS Dashboard

Click charts to interact with them. This dashboard contains the data that was age disaggregated.

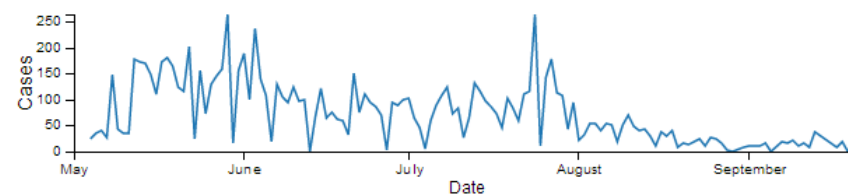
[Browse Other Dashboard](#)

Last Update: 20th September 2015

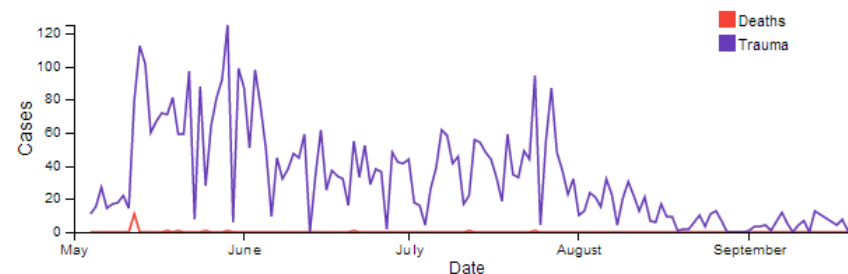
[Download latest version](#)

Date | Current filter:

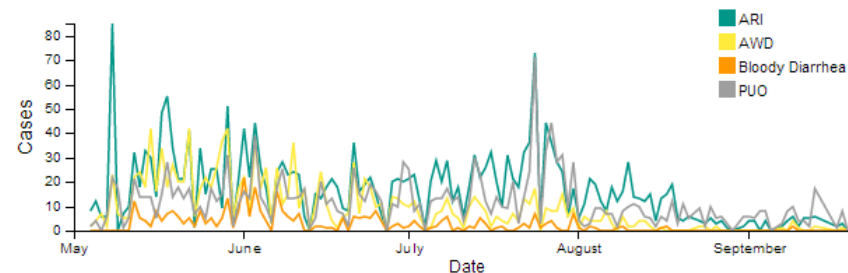
### Cases Per Day - Deaths, Trauma & Diseases (Filterable)



### Deaths and Trauma

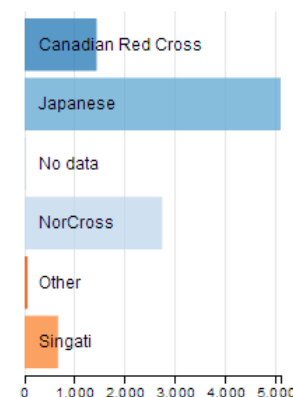


### ARI, AWD, Bloody Diarrhea, POU

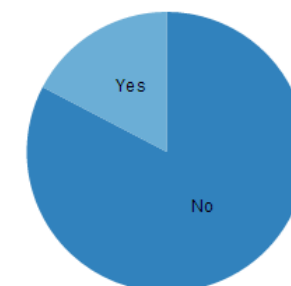


### Red Cross Unit (Filterable)

One or more RCs can be chosen



### Under 5 (Filterable)



[Reset All](#)

Dates filtered:

Deaths

18

Trauma

4,518

ARI

2,296

AWD

1,254

Bloody Diarrhea

337

POU

1,573



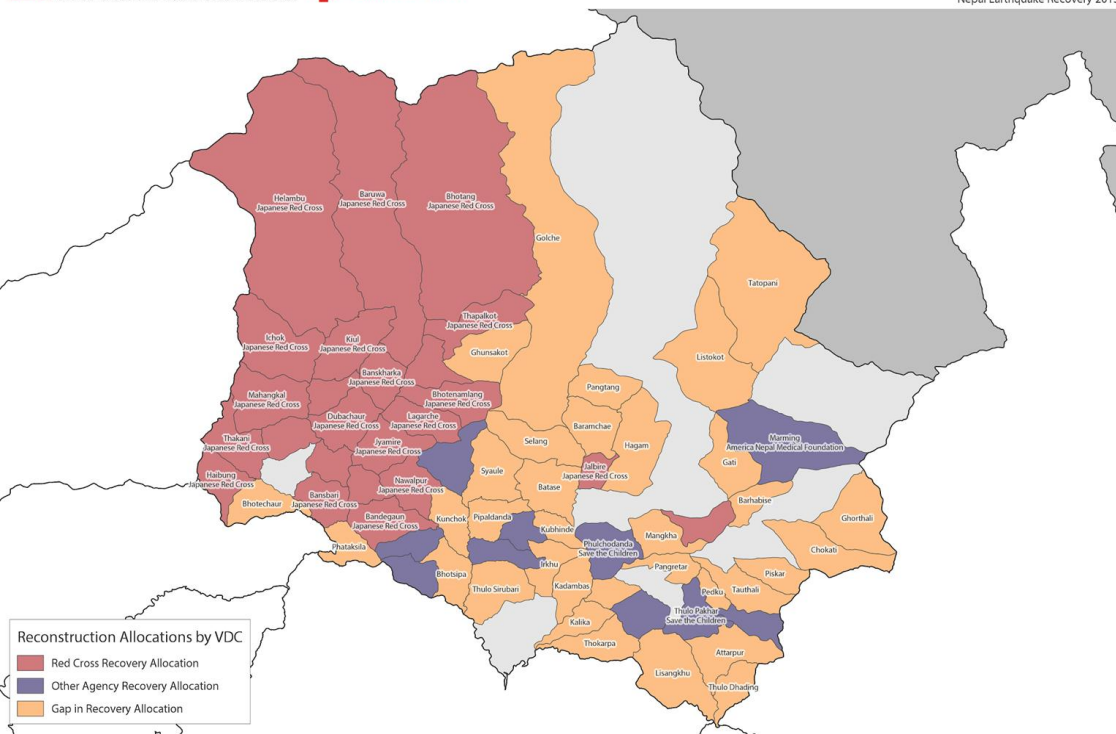
International Federation of Red Cross and Red Crescent Societies  
Fédération internationale des Sociétés de la Croix-Rouge et du Croissant-Rouge  
Federación Internacional de Sociedades de la Cruz Roja y de la Media Luna Roja  
الاتحاد الدولي لجمعيات الصليب الأحمر والهلال الأحمر



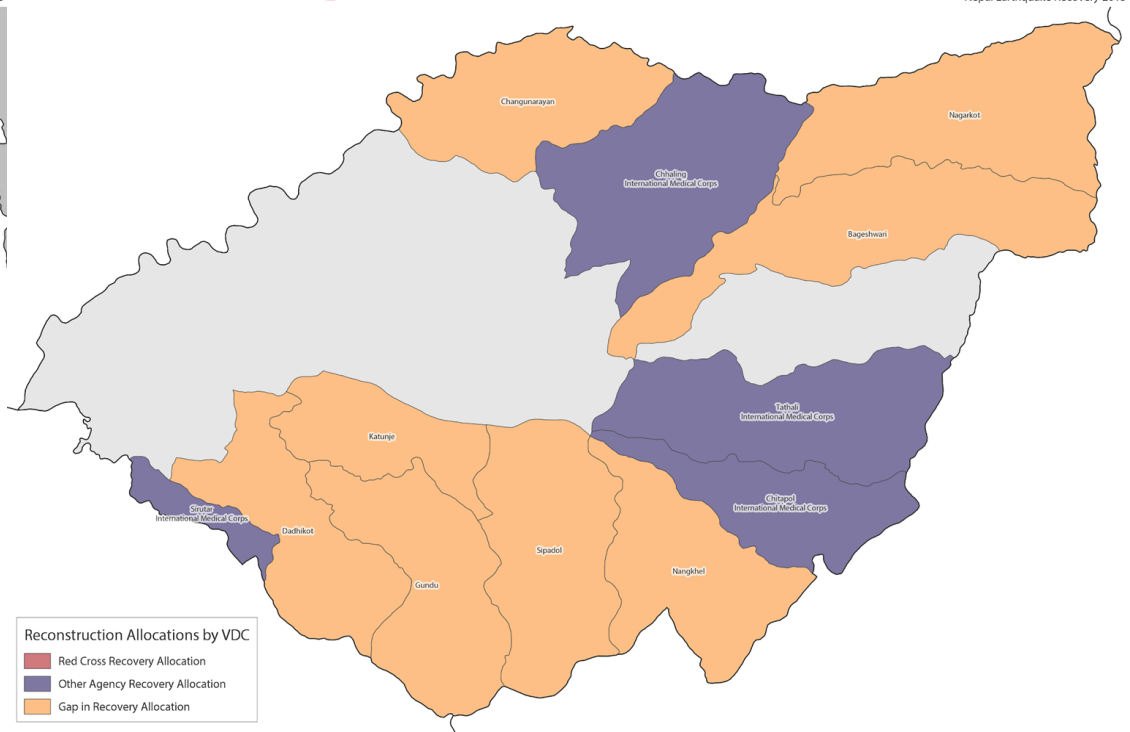
# Health



Health Facility Reconstruction: Sindhupalchok District  
Nepal Earthquake Recovery 2015



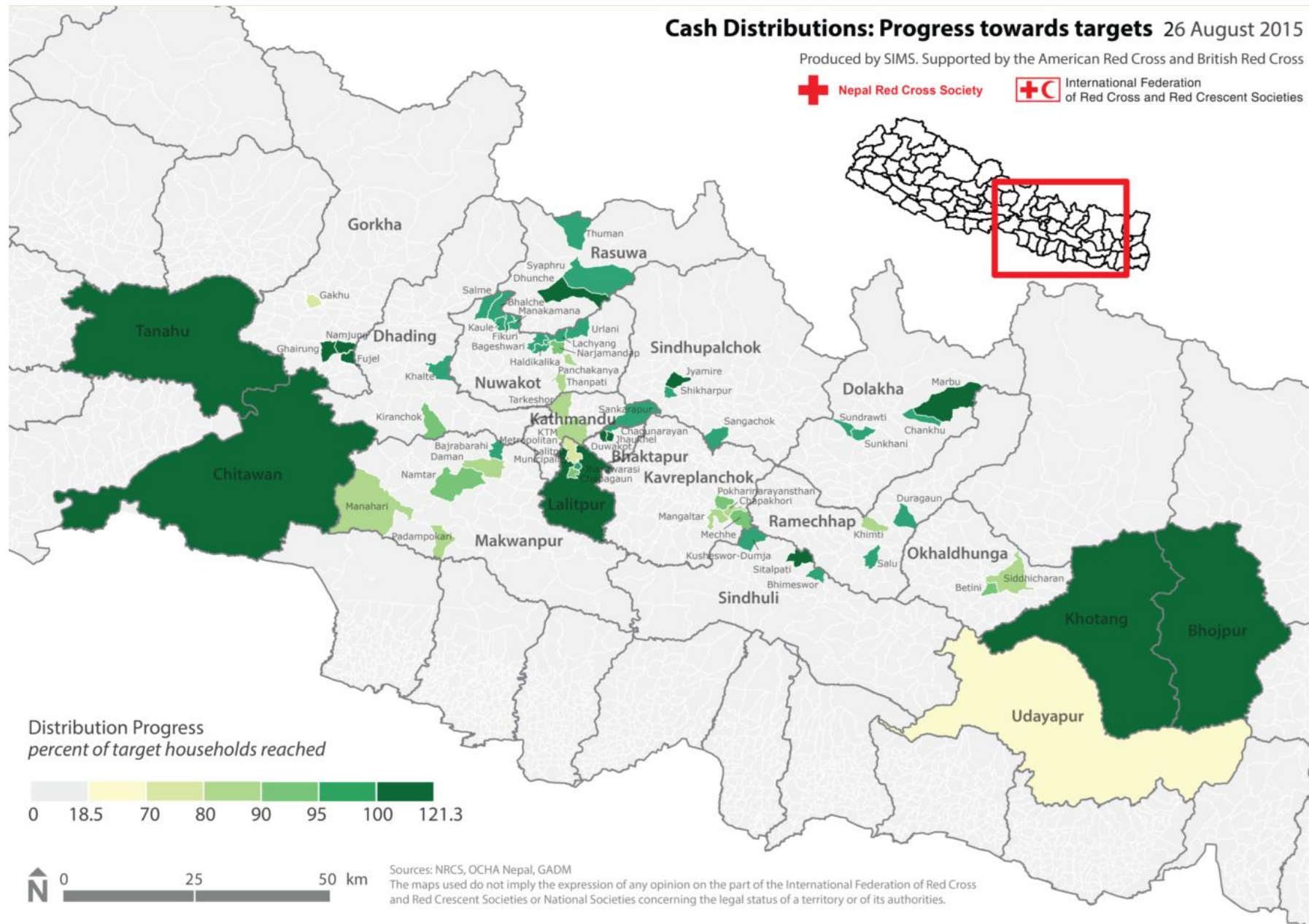
The maps used do not imply the expression of any opinion on the part of the International Federation of Red Cross and Red Crescent Societies or National Societies concerning the legal status of a territory or of its authorities.

Health Facility Reconstruction: Bhaktapur District  
Nepal Earthquake Recovery 2015

Produced by SIMS, Supported by the American Red Cross and British Red Cross.  
Date produced: 20 August 2015 The maps used do not imply the expression of any opinion on the part of the International Federation of Red Cross and Red Crescent Societies or National Societies concerning the legal status of a territory or of its authorities.



# Cash & Relief



International Federation of Red Cross and Red Crescent Societies  
Fédération internationale des Sociétés de la Croix-Rouge et du Croissant-Rouge  
Federación Internacional de Sociedades de la Cruz Roja y de la Media Luna Roja  
الاتحاد الدولي لجمعيات الصليب الأحمر والهلال الأحمر

# MSM

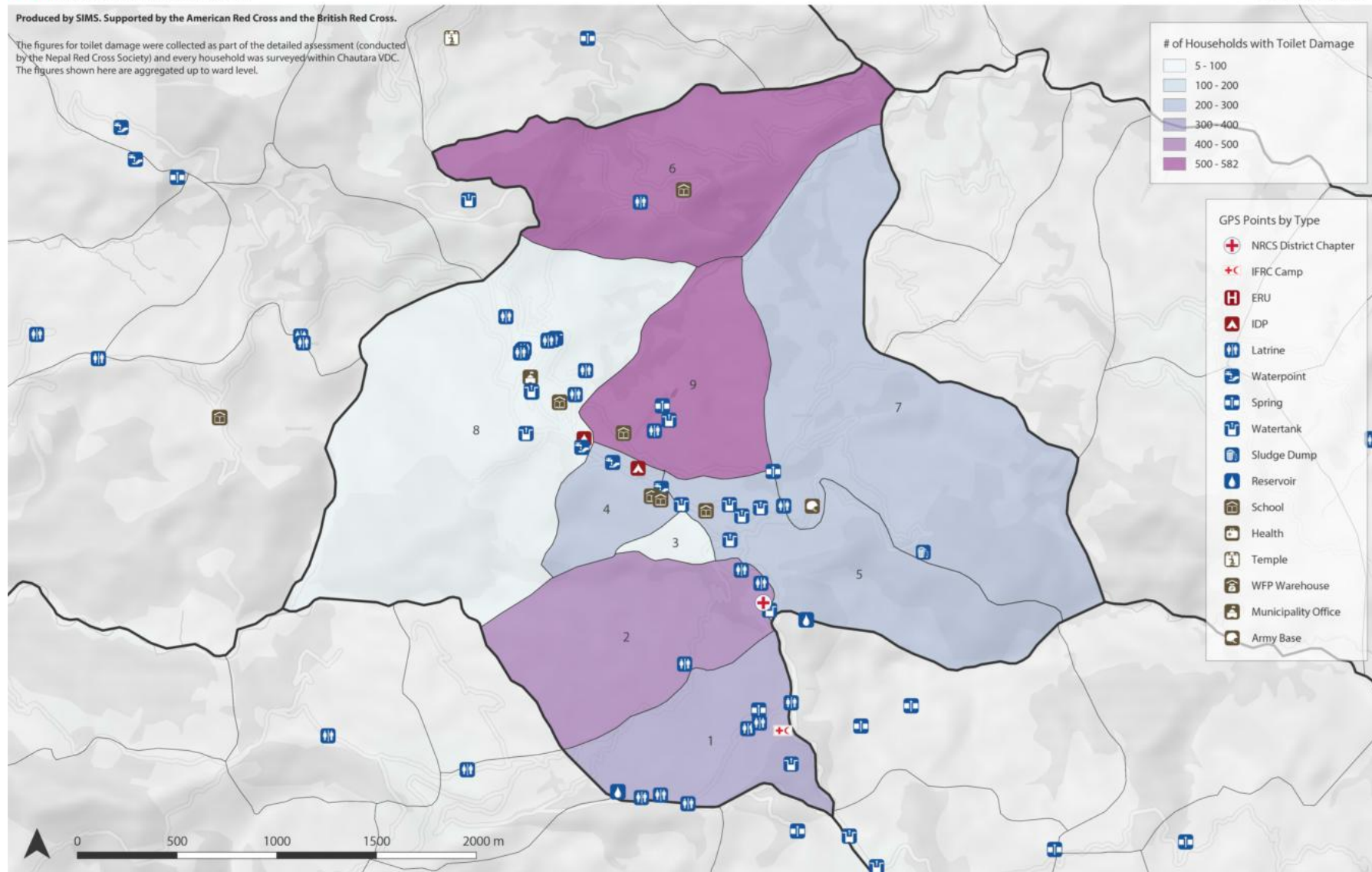


International Federation  
of Red Cross and Red Crescent Societies

Produced by SIMS. Supported by the American Red Cross and the British Red Cross.

The figures for toilet damage were collected as part of the detailed assessment (conducted by the Nepal Red Cross Society) and every household was surveyed within Chautara VDC. The figures shown here are aggregated up to ward level.

## Toilet Damage and Mass Sanitation Provisions Chautara, Sindhupalchok Nepal Earthquake 2015



Source: NRCS, BRC, MSM ERU, UNOCHA, OSM, ASTER

Produced: 17 July 2015

The maps used do not imply the expression of any opinion on the part of the International Federation of Red Cross and Red Crescent Societies or National Societies concerning the legal status of a territory or of its authorities.

FOR INTERNAL USE ONLY  
EQ-2015-000048-NPL



International Federation of Red Cross and Red Crescent Societies  
Fédération internationale des Sociétés de la Croix-Rouge et du Croissant-Rouge  
Federación Internacional de Sociedades de la Cruz Roja y de la Media Luna Roja  
الاتحاد الدولي لجمعيات الصليب الأحمر والهلال الأحمر

DATA PLAYBOOK: SLIDEDECK 15

# Dashboard

## Nepal Earthquake 2015 HIS Dashboard

Click charts to interact with them. This dashboard contains the data that was age disaggregated.

[Browse Other Dashboard](#)

Last Update: 5th September 2015

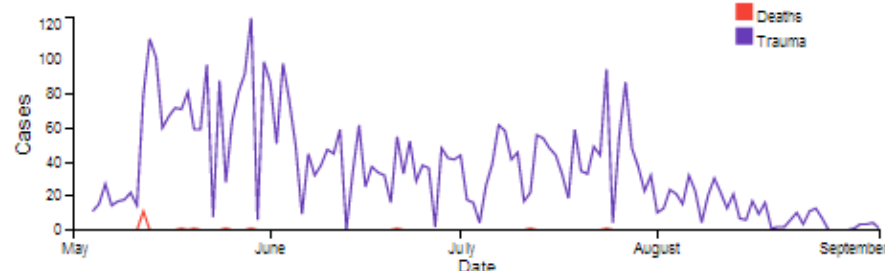
[Download latest version](#)

Date | Current filter:

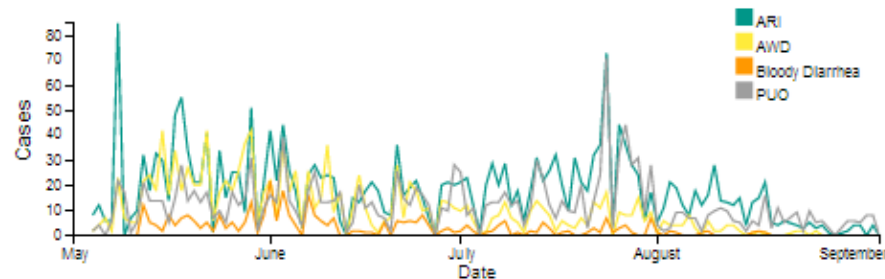
Cases Per Day - Deaths, Trauma & Diseases (Filterable)



Deaths and Trauma

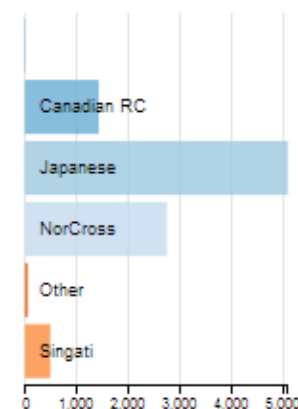


ARI, AWD, Bloody Diarrhea, POU



Red Cross Unit (Filterable)

One or more RCs can be chosen



[Reset All](#)

Dates filtered:

Deaths

18

Trauma

4,465

ARI

2,260

AWD

1,246

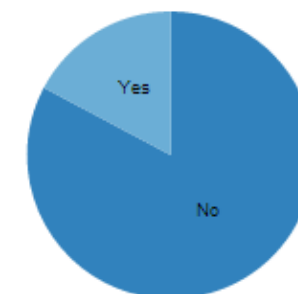
Bloody Diarrhea

336

POU

1,516

Under 5 (Filterable)



International Federation of Red Cross and Red Crescent Societies  
Fédération internationale des Sociétés de la Croix-Rouge et du Croissant-Rouge  
Federación Internacional de Sociedades de la Cruz Roja y de la Media Luna Roja  
الاتحاد الدولي لجمعيات الصليب الأحمر والهلال الأحمر



# Situational Report

NRCS - SitRep  
Earthquake 2015 - Situation Report

 Nepal Red Cross Society  International Federation of Red Cross and Red Crescent Societies  
Report published the 20th of August 2015

Source: Nepal Red Cross Society  
Produced by SMS supported by ARC and BRC  
For feedback email: [brainbault@redcross.org.uk](mailto:brainbault@redcross.org.uk)

Choose layers to show using the button on the top right of the maps. Hover the maps with the house to display figures at District level.



District	Total	Damage Type
+   00%	8,857	Dead People
+   00%	275	Missing People
+   00%	17,932	Injured People
+   00%	1,160,516	Affected Families
+   00%	649,815	Displaced Families
+   00%	638,979	Fully Dest. Houses
+   00%	300,639	Partially Dest. Houses



District	Total	Distributed Item
+   00%	11,332	NFRI-Full-set
+   00%	111,150	Tarpaulin
+   00%	28,322	Blankets
+   00%	133,314	ORS
+   00%	51,526	Hygiene-kits
+   00%	602,448	Aqua-Tab
+   00%	79,188	Soap



District	Total	Responders
+   00%	4,482	FA
+   00%	678	CADRE/Rescue
+   00%	76	NDRT
+   00%	36	PSS
+   00%	140	RFL/DBM
+   00%	214	WASH
+   00%	170	DDRT
+   00%	2,151	Other
+   00%	23	Intl. Deleg./Vol.
+   00%	7,970	All

The maps used do not imply the expression of any opinion on the part of the International Federation of Red Cross and Red Crescent Societies or National Societies concerning the legal status of a territory or of its authorities.

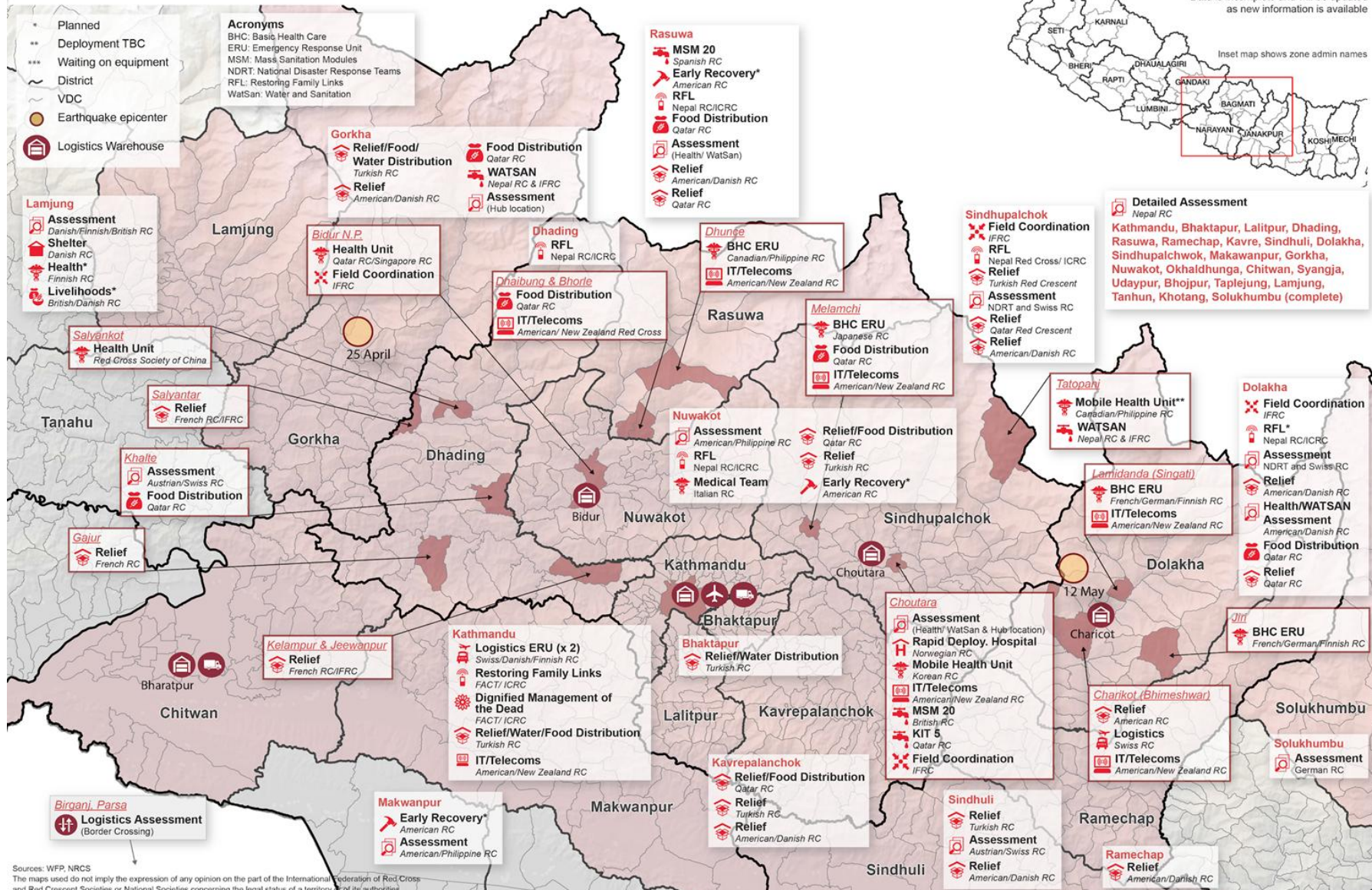


International Federation of Red Cross and Red Crescent Societies  
Fédération internationale des Sociétés de la Croix-Rouge et du Croissant-Rouge  
Federación Internacional de Sociedades de la Cruz Roja y de la Media Luna Roja  
الاتحاد الدولي لجمعيات الصليب الأحمر والهلال الأحمر



 **Nepal Red Cross Society**  **International Federation  
of Red Cross and Red Crescent Societies**

Produced by SIMS supported by the American Red Cross and the British Red Cross



Sources: WFP, NRCS

The maps used do not imply the expression of any opinion on the part of the International Federation of Red Cross and Red Crescent Societies or National Societies concerning the legal status of a territory or of its authorities.



International Federation of Red Cross and Red Crescent Societies  
Fédération internationale des Sociétés de la Croix-Rouge et du Croissant-Rouge  
Federación Internacional de la Cruz Roja y de la Media Luna Roja  
الاتحاد الدولي لجمعية الصليب الأحمر والهلال الأحمر

DATA PLAYBOOK: SLIDEDECK 15

Remember - there are other organisations too!





# Logistics Cluster

**Sahel Food Crisis**

Partnership Understand the Crisis Access the Data

Rains only come once a year in the Sahel, last year they were below-average. Over 15 million people are at risk for food insecurity. In an effort to respond to early warnings, this tool is a collaboration to strengthen the data sharing in the region.

About the site Explore the data

Cabo Verde Praia

Las Palmas de Gran Canaria

Adrar الجزائر In Salah Illizi Tamanrasset Tessalit Agadez Arlit Niger Faya-Largeau Fada Tchad Biltine Khartouم الخرطوم السودان Kadougou كادوغو

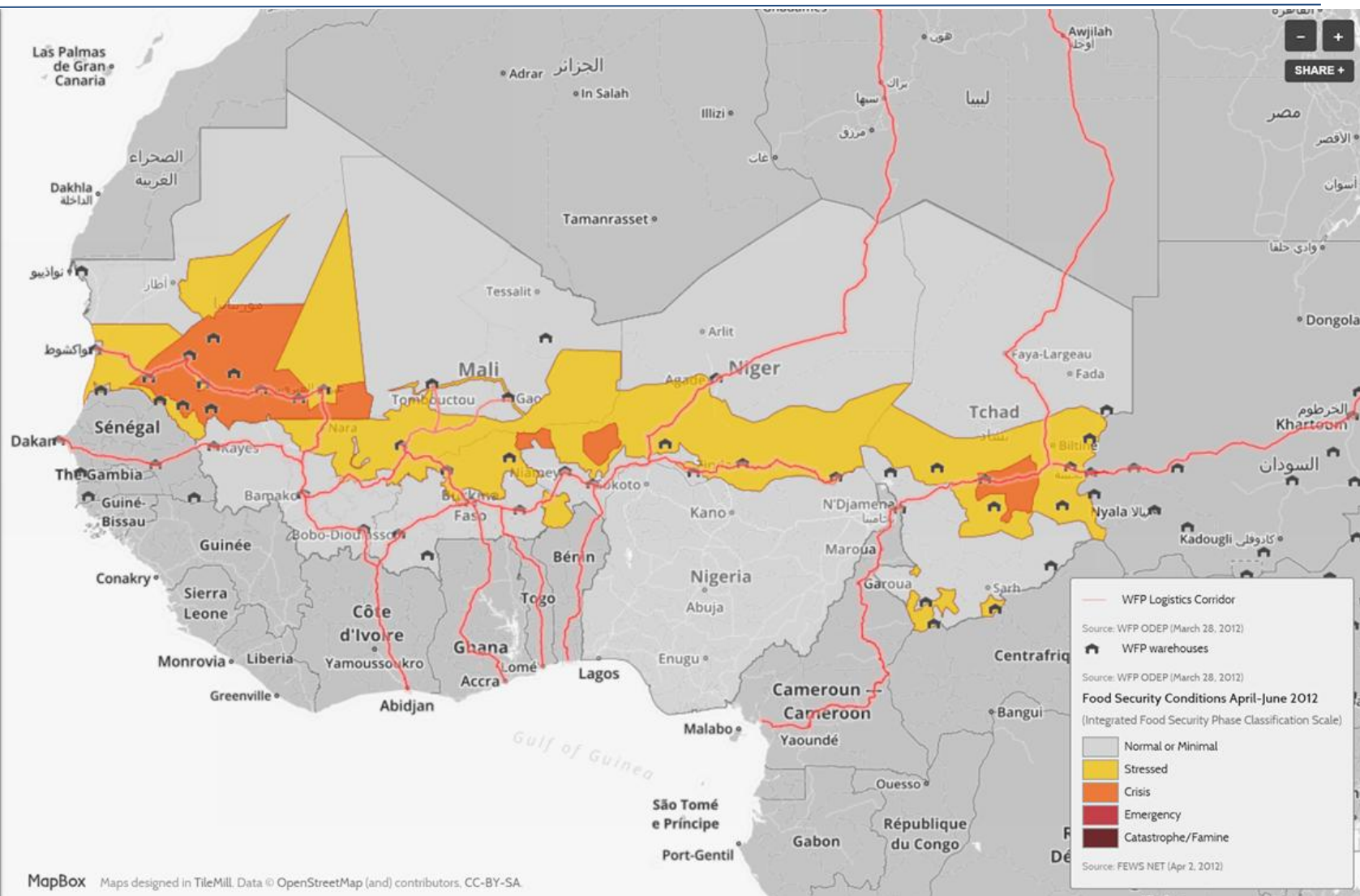
Dakhla الداخلة نواذيبو أطار واكشوط

Dakar Sénégal Nara Mali Tombouctou Gao Bamako Niaméni Niakoto Faso Kano N'Djamena Maroua Garoua Sarh Yaoundé Cameroun Cameroun Ouessou République du Congo Bangui

Guinée-Bissau Bissau Barakou Bobo-Dioulassou Faso Bénin Togo Lomé Accra Ghana Lagos Abuja Enugu Malabo São Tomé e Príncipe Port-Gentil Gabon

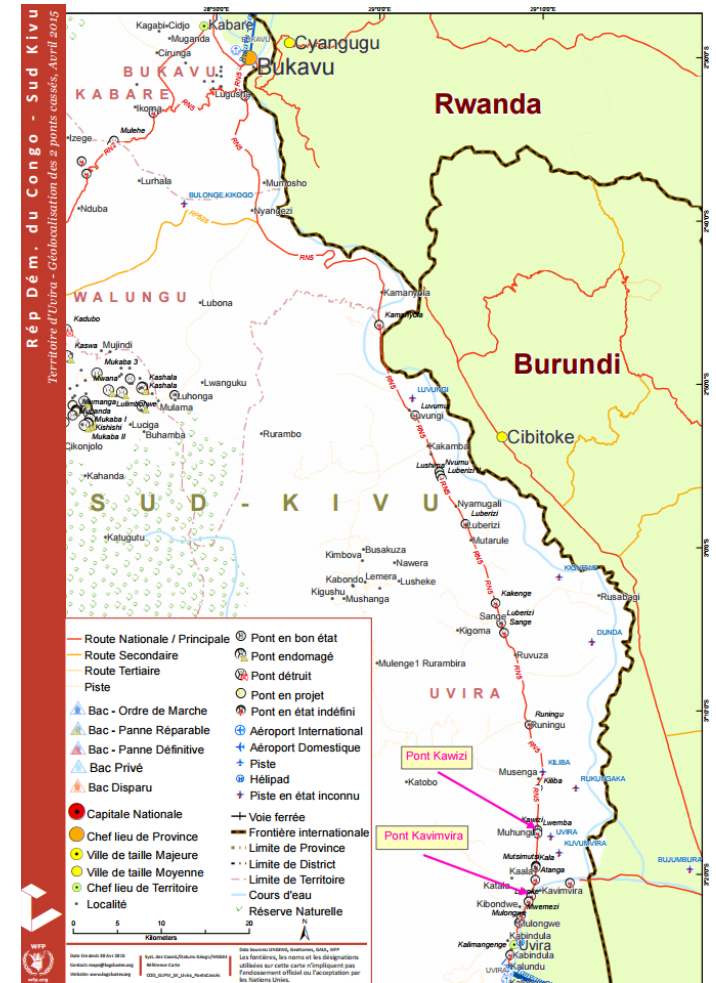
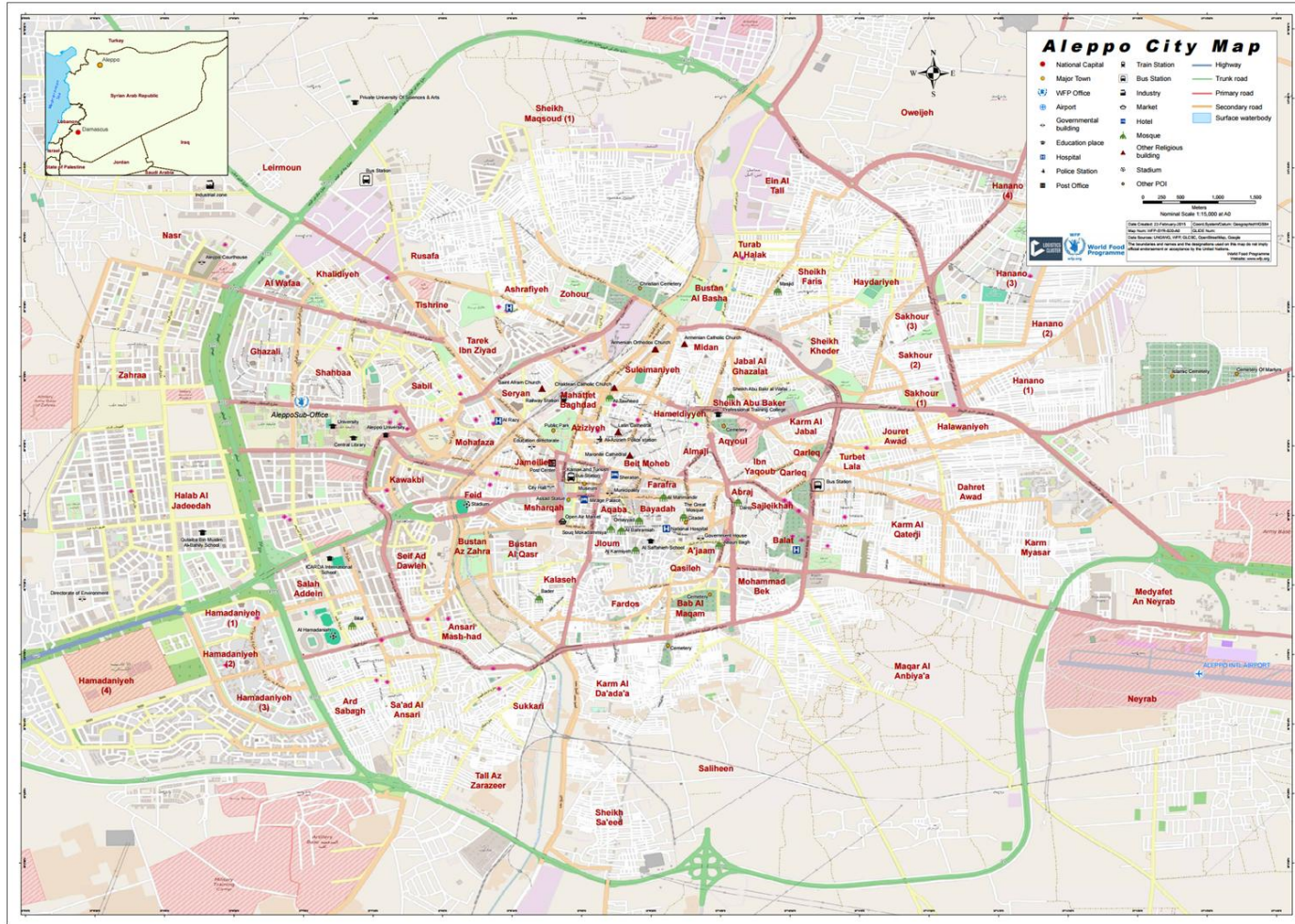
Sierra Leone Conakry Monrovia Liberia Yamoussoukro Côte d'Ivoire

WFP WORLD BANK GFDRR FEWS.NET OCHA developmentSEED SERVIR UNHCR The UN Refugee Agency



International Federation of Red Cross and Red Crescent Societies  
Fédération internationale des Sociétés de la Croix-Rouge et du Croissant-Rouge  
Federación Internacional de Sociedades de la Cruz Roja y de la Media Luna Roja  
الاتحاد الدولي لجمعيات الصليب الأحمر والهلال الأحمر

# Logistics Cluster




International Federation of Red Cross and Red Crescent Societies  
Fédération internationale des Sociétés de la Croix-Rouge et du Croissant-Rouge  
Federación Internacional de Sociedades de la Cruz Roja y de la Media Luna Roja  
الاتحاد الدولي لجمعيات الصليب الأحمر والهلال الأحمر

DATA PLAYBOOK: SLIDEDECK 15




# Map Action



**Nepal: Earthquake Population in areas without vehicular access**

Map shows population living in VDCs reported to have no vehicular access. Access data reported by the Nepal Food Security Monitoring Programme via WFP / Logistics Cluster.

**Data sources**  
Situational data: WFP/Logistics Cluster from Nepal Food Security Monitoring Programme (NeKSAP)  



Boundaries: UN OCHA  
Settlements: OSM  
Physical features: Geonode

• Village  
 • Town  
 • City  
**Roads**  
 — Primary  
 — Secondary  
 — Tertiary

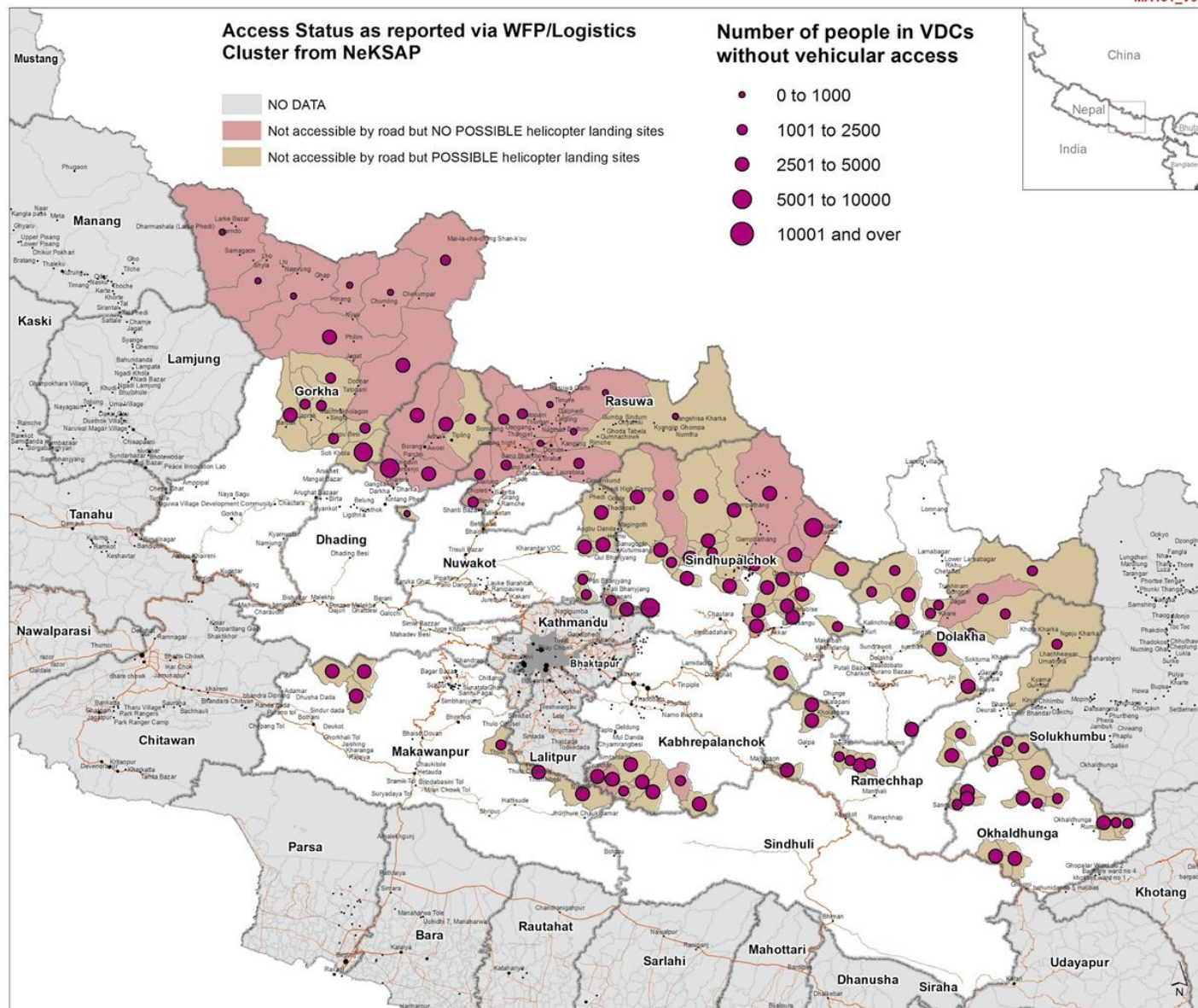
0 10 20 30 40  
 kilometres  
 Scale 1:800,000 (at A3 size)

Created 11 May 2015 / 12:00 UTC +05:45  
 Map Document MA131\_V01\_RemoteAccessPlanning  
 Projection / Datum Geographic / WGS84  
 Glide Number EQ-2015-000048-NPL

Produced by MapAction  
 nepal@mapaction.org  
 www.mapaction.org

Supported by  


The depiction and use of boundaries, names and associated data shown here do not imply endorsement or acceptance by MapAction.



International Federation of Red Cross and Red Crescent Societies  
 Fédération internationale des Sociétés de la Croix-Rouge et du Croissant-Rouge  
 Federación Internacional de Sociedades de la Cruz Roja y de la Media Luna Roja  
 الاتحاد الدولي لجمعيات الصليب الأحمر والهلال الأحمر



# Map Action



**Serbia: Floods -  
UNDAC Assessment of  
Logistics Capacity,  
26 May 2014**

UNDAC logistics capacity assessment mission, conducted 26/5/14. Refer to assessment report for results and full details.

Route:  
Belgrade - Kolari - Pozarevac - Petrovac - Velika Gradiska - Kostolac - Drmno Ram - Bradavac - Maljurevac - Bratinac - Mihailovac - Dobri Do - Grcac - Smederevska Palanka - Svilajnac - Jasenov - Medvedja - Miliva - Despotovac - Resavica - Popovnjak - Despotovac - Bukovac - Bekovac - Despotovac - Bisance - Belajnac - Glogovac - Jagodina - Kolare - Dragoljevac - Medojevac - Locika - Rabenovac - Tecic - Rekovac - B. Krusevica - Komarine - Motric - Zupanjevac - Nadrije - Bogolinac - Dobroselica

 Assessment Locations  
 Assessment Route

Main map scale: 1: 1,000,000 (At A3)

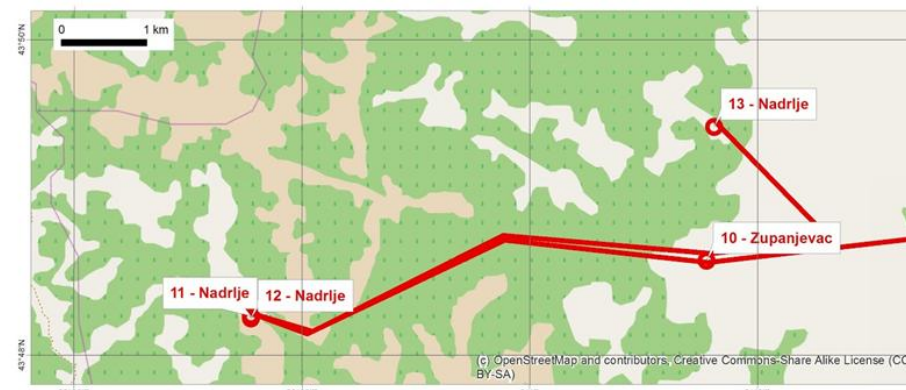
**Data sources**  
Assessment: UNDAC  
Background Mapping: OpenStreetMap

Created: 28/05/2014 / 10:00 LT UTC+01:00  
 Map Document: MA025\_UNDAC\_LogsAssessmentRoute\_20140526\_A3  
 Projection / Datum: WGS 1984 UTM Zone 34N

Produced by MapAction  
[www.mapaction.org](http://www.mapaction.org)  
[serbia@mapaction.org](mailto:serbia@mapaction.org)

Supported by  
  
 from the British people

The depiction and use of boundaries, names and associated data shown here do not imply endorsement or acceptance by MapAction.



MA025

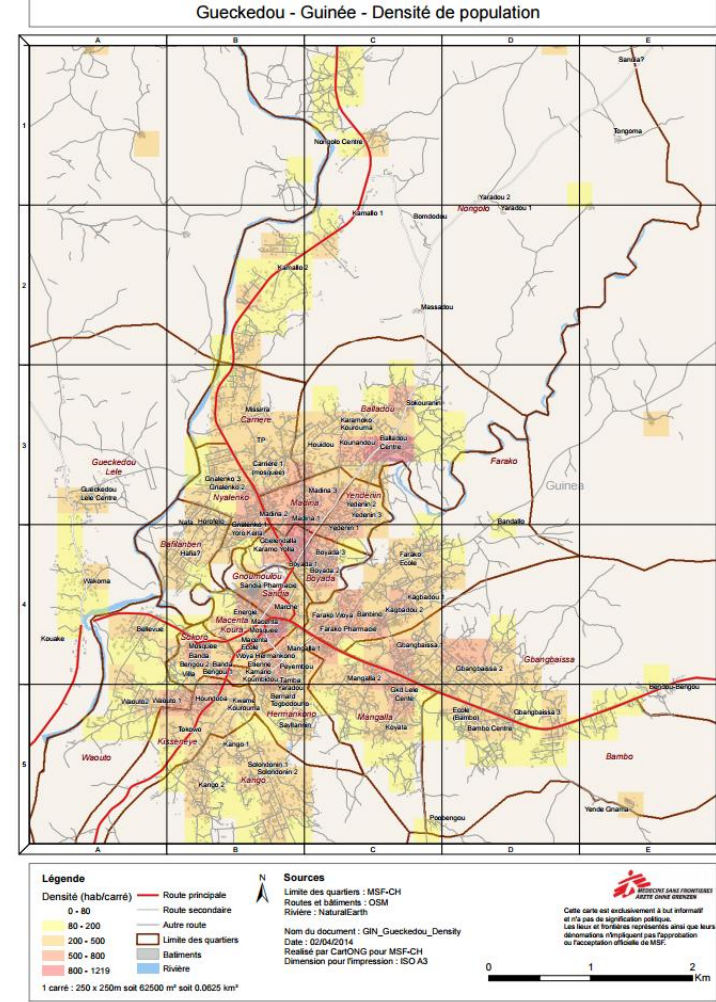
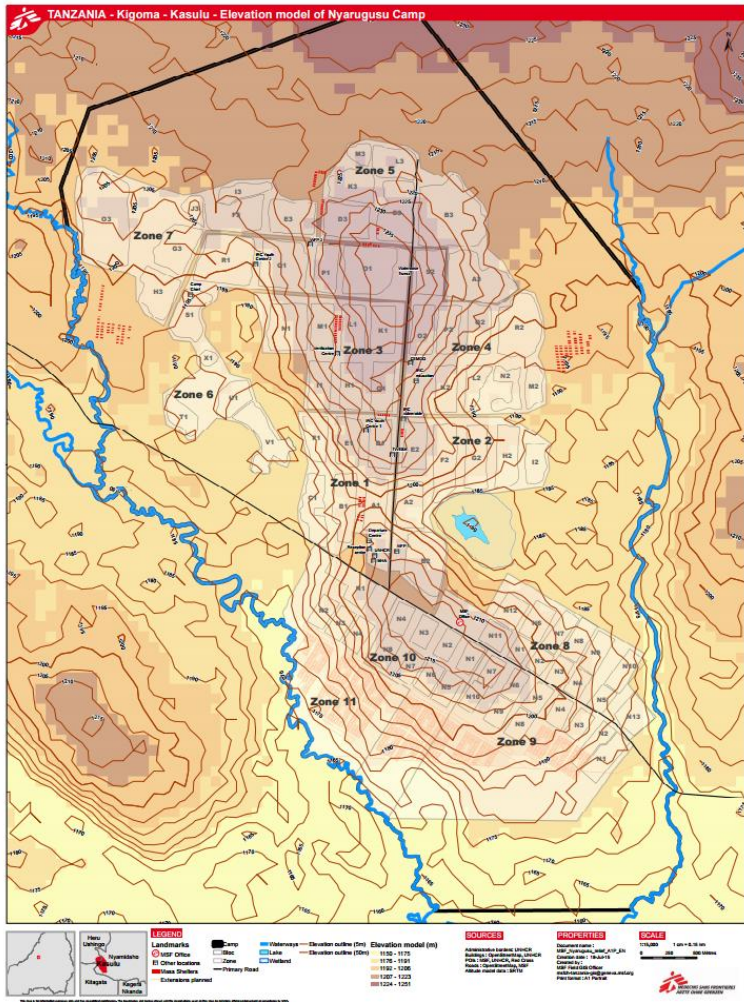


International Federation of Red Cross and Red Crescent Societies  
Fédération internationale des Sociétés de la Croix-Rouge et du Croissant-Rouge  
Federación Internacional de Sociedades de la Cruz Roja y de la Media Luna Roja  
الاتحاد الدولي لجمعيات الصليب الأحمر والهلال الأحمر

DATA PLAYBOOK: SLIDEDECK 15



## MSF





# OCHA

E14

3W Data Entry - Use the 3W data entry tool to add/delete entries (Menu > 3W TOOLBOX)

Add a new organisation

not duplicated entry (green dot)  
duplicated entry, check your data (red dot)

HIDE THESE COLUMNS

Acronym	Organisation	Org Type	Sector	Activity Type	Admin Unit Name	Pcode	Beneficiaries	Check Duplicated Entries	PT.Concat	Count PT.Conc	PT.ID	PT.FirstID	PT.LastID.R	PT.LstOrn	PT.Show
TO	Testing Organisation	National NGO	Education	Emergency	Anbar	IQ-G01	0	●	EducationalIQ-G01	1	1	TRUE	0 TO		TRUE
TO	Testing Organisation	National NGO	Education	Emergency	Dahuk	IQ-G08	0	●	EducationalIQ-G08	1	2	TRUE	0 TO		TRUE

Map0Geometry

Go to the 3W Data Entry Page

Standardized Scale

Yes

UPDATE DASHBOARD

Emergency Programs

Organisations working in Iraq

Organisations by Type

Organisations by Cluster

Education

Food Security and Agriculture

Health

Data / Organisations / Dashboard / Report 2 / Calculated table / Vocabulary / Gears / Geometry / Setup Instructions





# SIMS

## tools and resources



International Federation of Red Cross and Red Crescent Societies  
Fédération internationale des Sociétés de la Croix-Rouge et du Croissant-Rouge  
Federación Internacional de Sociedades de la Cruz Roja y de la Media Luna Roja  
الاتحاد الدولي لجمعيات الصليب الأحمر والهلال الأحمر

# FACT toolkit & rcrcsims.org

## Internal Resources



**SIMS one pager** gives a concise overview of SIMS activities, products and services. [Link](#)



**Activation flow** one pager describing the steps of the major phases of SIMS support: activation, response and transition. [Link](#)



**Disaster information cycle** explained in an infographic. [Link](#)



**Menu of services** detailing different types of SIMS products and services. [Link](#)



**Cash in Emergencies Toolkit** by the International Red Cross and Red Crescent Movement to make cash transfer based programming (CTP) tools, practical guidance and minimum standards easily accessible. [Link](#)



**Tips and recommendations** for better information management. [Link](#)



**Monitoring and learning process** documenting the reviews support activities and changes based on lessons learned. [Link](#)

## Information Product Examples

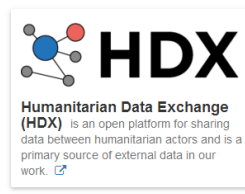


## External Resources

SIMS makes a real effort to stay connected into the wider information management community within and beyond the humanitarian sector. These networks are essential for building skills, exchanging data and sharing experiences. You can find below a collection of the external groups that we work with on a regular basis. Some of them are mainly used for simply downloading and using content, whereas others are actors with which we actively work and collaborate.



**OpenStreetMap (OSM)** is an open-source equivalent of Google Maps which allows anyone to edit and extract data. SIMS uses and contributes to this data in almost every response. [Link](#)



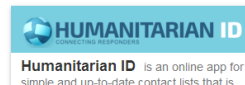
**Humanitarian Data Exchange (HDX)** is an open platform for sharing data between humanitarian actors and is a primary source of external data in our work. [Link](#)



**Shelter Cluster** is the star coordination mechanism for shelter response and is co-chaired by IF and UNHCR. SIMS works in close coordination with the cluster sharing data and experiences.



**Humanitarian OpenStreetMap Team**



**Humanitarian ID** is an online app for simple and up-to-date contact lists that is



## Field Assessment and Coordination Team Toolkit

[FACT Mission Cycle\\_2 8 16\\_ID](#)

### A\_FACT Assessment

- [A2 24 Hour Assessment Checklist](#)
- [A3 72 Hour Assessment Checklist](#)
- [A4 Secondary Information Sources](#)
- [A5 FACT Situation Analysis and Response Recommendations Report TEMPLATE](#)
- [A6 Camp Assessment Template](#)
- [A7 Needs\\_Capacity\\_Analysis Form \(paper version\)](#)
- [A8 LogsAssessmentChecklist](#)

### B\_FACT Analysis and Decision Making

- [B2 SitRep Template v 3](#)
- [B3 Response Options Analysis Template](#)
- [B4 Scenario Mapping](#)
- [B5 IFRC-EPoA planning template](#)
- [B6 IFRC\\_DREF\\_Plan of Action\\_Guidance-EN\\_LR](#)
- [B7 FACT Situation Analysis and Response Recommendations Report v 2](#)
- [Detailed budget and expenditure format-DREF-EPoA-EA](#)

### C\_FACT Operational Planning

- [C4 Plan of Arrival Checklist](#)
- [C5 Security Plan Template](#)

### D\_FACT Coordination

- [D1 4Ws Coordination Tool](#)
- [D2 FACT Communications Plan Template](#)
- [D4 FACT IM Roles Checklist](#)

### M\_FACT Team Admin \_ Management

- [M01 Country\\_Response\\_Operation Contact List\\_TEMPLATE](#)
- [M05 FACT meeting note template](#)
- [M06 IM Briefing Pack Checklist.doc](#)
- [M08 FACT IM File Structure Outline](#)
- [M10 FACT EOM](#)

### SIMS Overview Documents

- [Basic Excel Skills](#)
- [IM to GIS Checklist](#)
- [Menu of Services\\_20151222](#)
- [SIMS\\_1Pg\\_\\_31015](#)



International Federation of Red Cross and Red Crescent Societies  
Fédération internationale des Sociétés de la Croix-Rouge et du Croissant-Rouge  
Federación Internacional de Sociedades de la Cruz Roja y de la Media Luna Roja  
الاتحاد الدولي لجمعيات الصليب الأحمر والهلال الأحمر

# Remote Support Tools



Dropbox -- data storage and content management system



Google Drive -- sharing spreadsheets, storage, etc.



CartoDB -- interactive maps without programming



Skype -- for coordination, communication



OneDrive -- can be option for some responses



Trello -- Kanban system, task management and priorities, remote coordination



QGIS -- opensource GIS software, improving rapidly



ArcGIS -- GIS industry standard software, high processing power



Adobe Suite -- PDFs, Illustrator used for high-detail cartography



# SIMSulation



International Federation of Red Cross and Red Crescent Societies  
Fédération internationale des Sociétés de la Croix-Rouge et du Croissant-Rouge  
Federación Internacional de Sociedades de la Cruz Roja y de la Media Luna Roja  
الاتحاد الدولي لجمعيات الصليب الأحمر والهلال الأحمر



# SIMSulation

Each group will be assigned a trello board. Use this to keep in touch with others in your group, share thoughts and ideas as well as post final products. Also move the cards across the columns as you start and finish tasks

You will have one of the facilitators with your group. They will act as the Field team and/or SIMS coordinator.

At the end, each group will explain what they did and have a discussion around what they did.



# Wrap up and evaluation



International Federation of Red Cross and Red Crescent Societies  
Fédération internationale des Sociétés de la Croix-Rouge et du Croissant-Rouge  
Federación Internacional de Sociedades de la Cruz Roja y de la Media Luna Roja  
الاتحاد الدولي لجمعيات الصليب الأحمر والهلال الأحمر