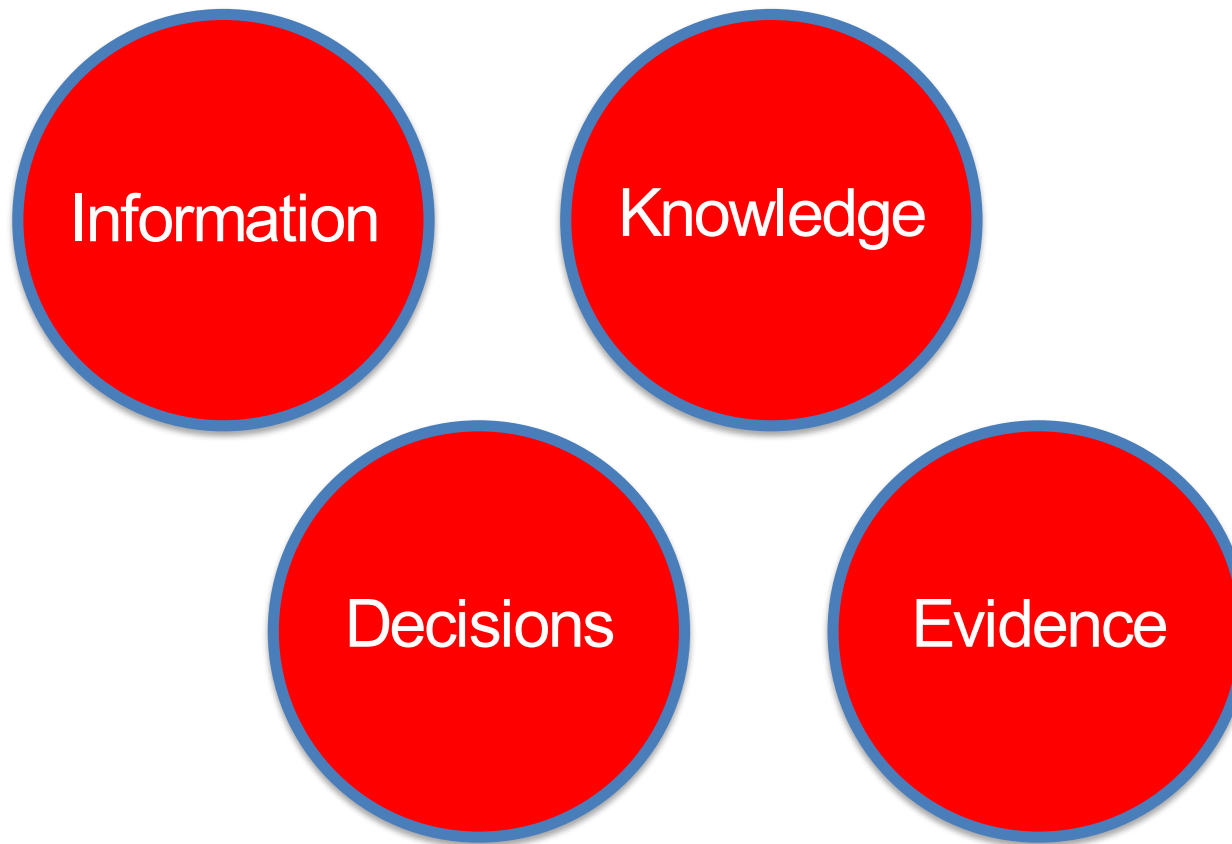


Data Quality Workflows

Data can lead to:



Introduction

Using our data to inform our work often means comparing, consolidating, and analyzing data.

Data can be primarily sourced or used with secondary data sources. Data quality and standards are two key requirements to become more data ready.

Why do data standards matter and how might we address data quality issues?



International Federation of Red Cross and Red Crescent Societies
Fédération internationale des Sociétés de la Croix-Rouge et du Croissant-Rouge
Federación Internacional de Sociedades de la Cruz Roja y de la Media Luna Roja
الاتحاد الدولي لجمعيات الصليب الأحمر والهلال الأحمر

From Data to Decision

Data

Data is an abstract item. It is often hard to link to our work.

It needs context, language and knowledge to translate into next steps.

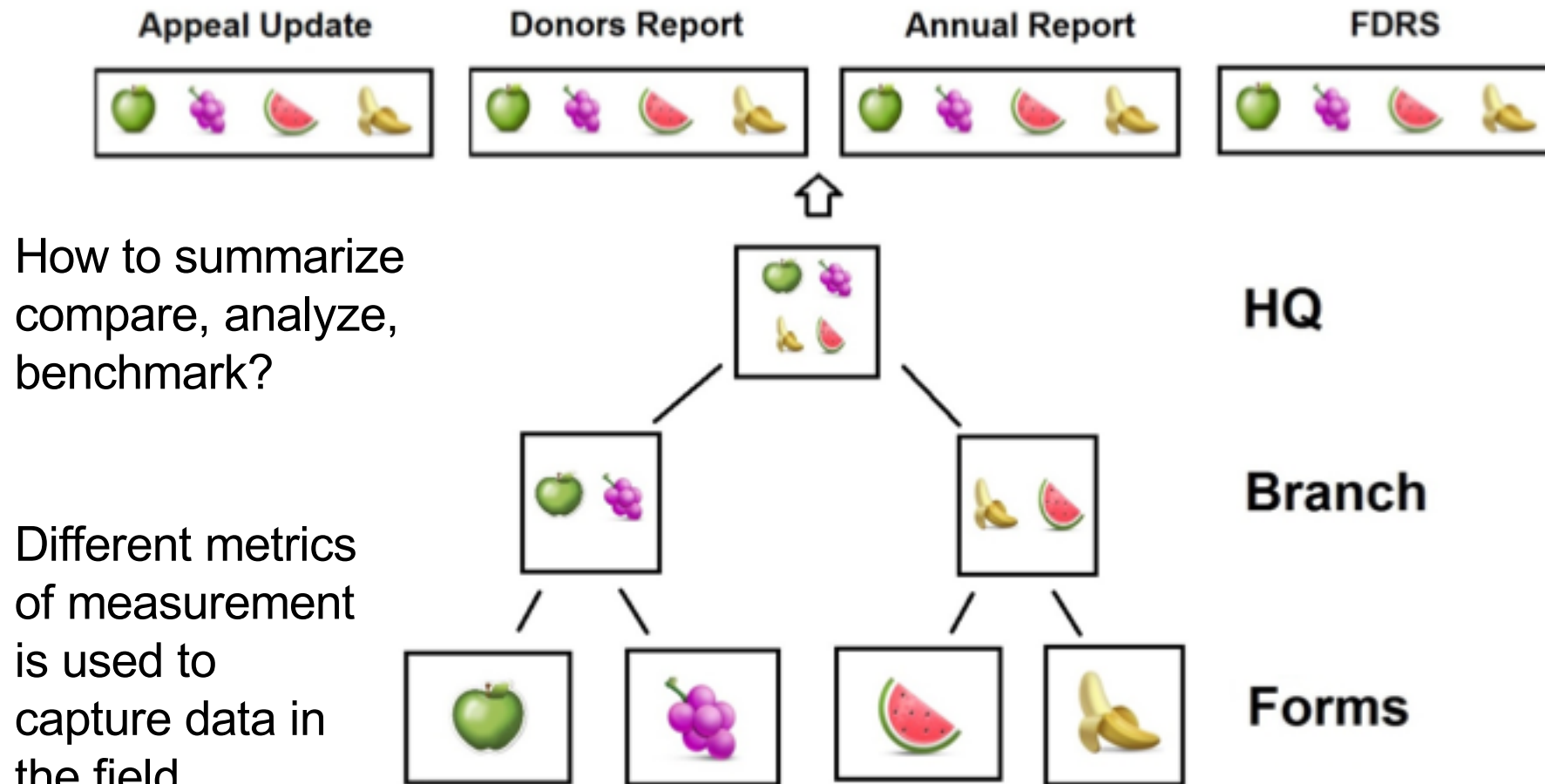
Data can be bias or missing.

Decision

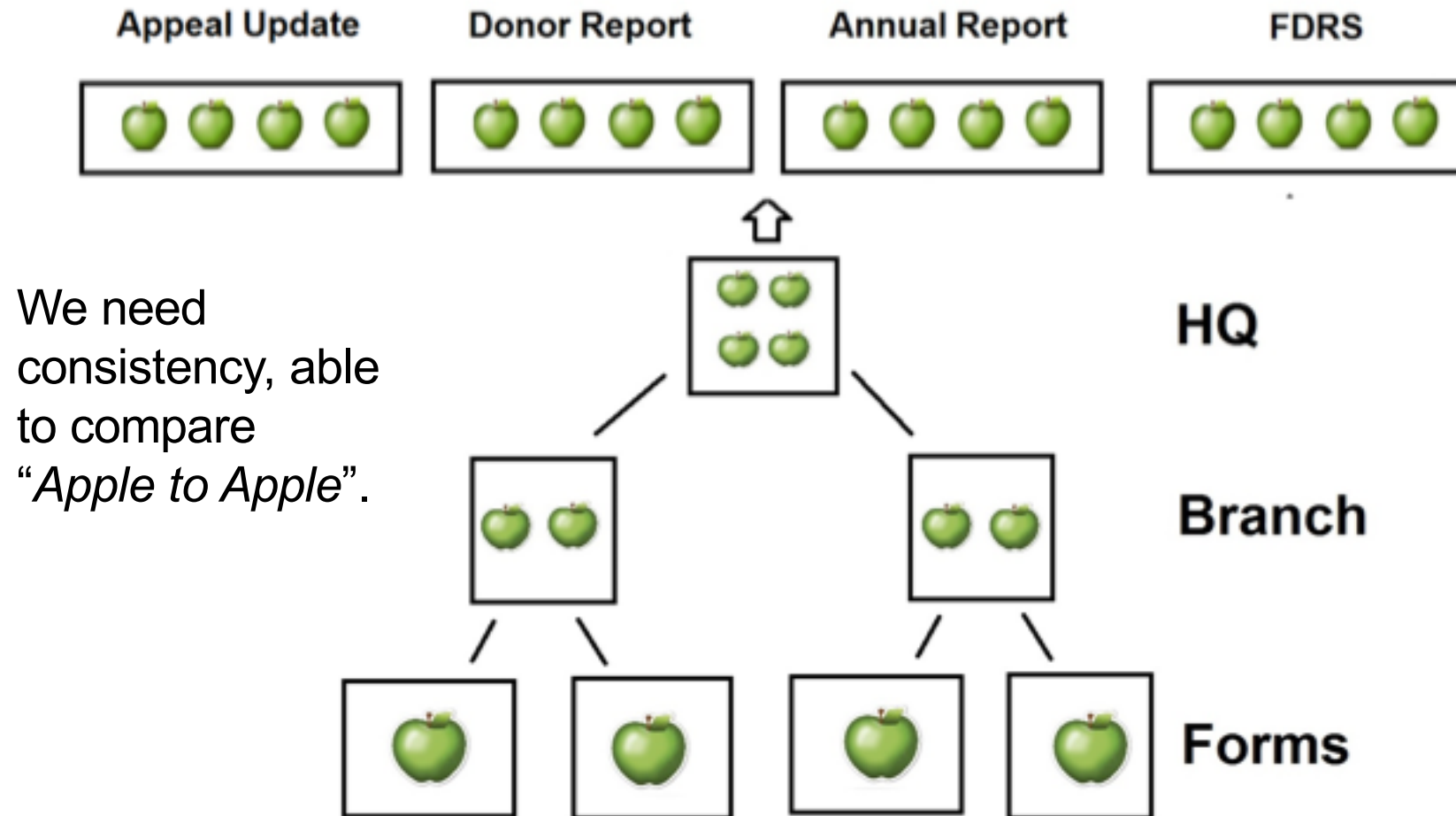
Data may or may not be ‘*evidence*’ or ‘*knowledge*.’ Data does not always translate to or inform a decision.

‘*Quality data*’ can improve with the methodology. It may result in improvements in information products or reports, and decisions.

What we need to avoid



What we need to achieve



Quality can mean more details

	National Society #1	National Society #2	National Society #3	National Society #4
Thematic area (e.g. health, wash, PMERr, etc.)	1, 000 communities	1,000 schools	1,000 households	Reached 1,000 communities or schools or households that made up of 10,000 direct recipients, of which 3,469 are male and 6,531 are female. Age breakdown: 0- 5 0 6-12 0 13-17 788 18 - 49 3574 40 - 59 4541 60 - 69 1097 70 -79 0 80+ 0



Defining the dimensions



(See next slide for explanation.)

What we need to achieve

Consistency: Standardized between branches / NS for collective achievements; Federation-wide aggregation

Accuracy: How accurate data reflects real world/situations / Analysis / Triangulation of data

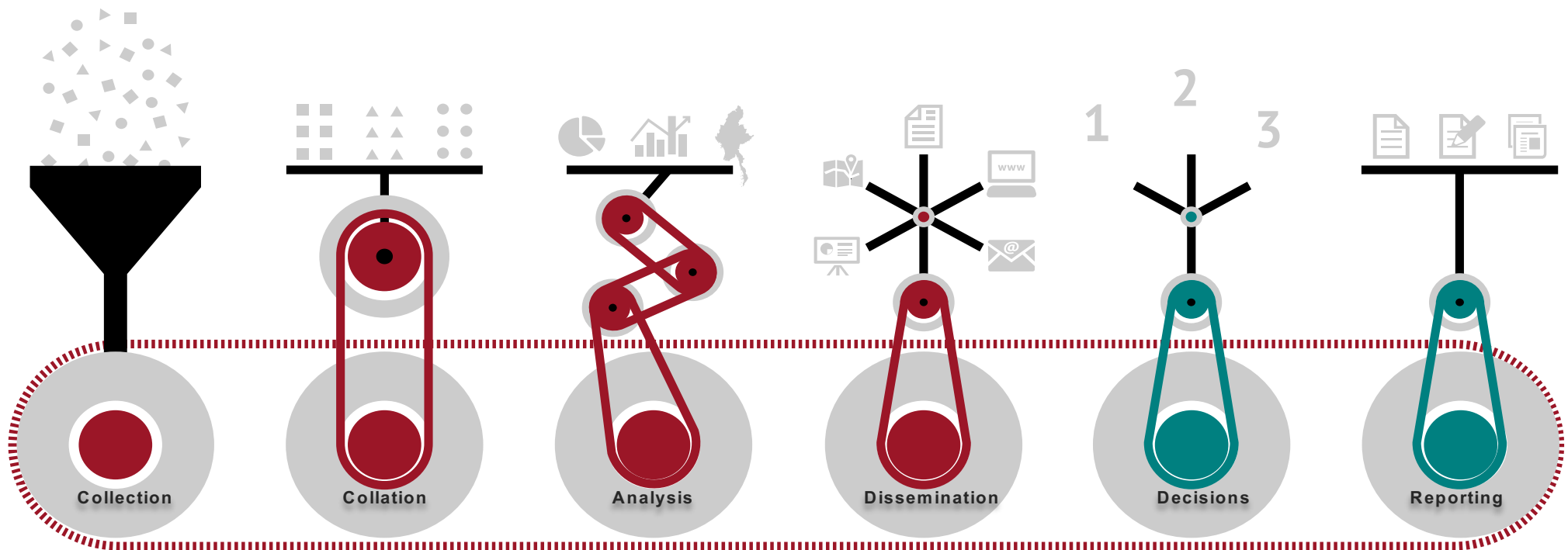
Validity: Syntax (format, type & range) / Common language on data / indicators, validation process

Timeliness: Frequency of data collection / Dynamic or non-dynamic records/usage, deal with data decay

Collection and Storage: Data collected are cleaned and stored.

Completeness - All parameters are collected as required. (How flexible are we in accepting limitations/gaps?)

Example: *Information Management Process Cycle*



International Federation of Red Cross and Red Crescent Societies
Fédération internationale des Sociétés de la Croix-Rouge et du Croissant-Rouge
Federación Internacional de Sociedades de la Cruz Roja y de la Media Luna Roja
الاتحاد الدولي لجمعيات الصليب الأحمر والهلال الأحمر

Mapping your work

Every National Society and sector has unique characteristics.

These examples illustrate the complexity of data workflows with multiple stakeholders.

How would you map your workflows?

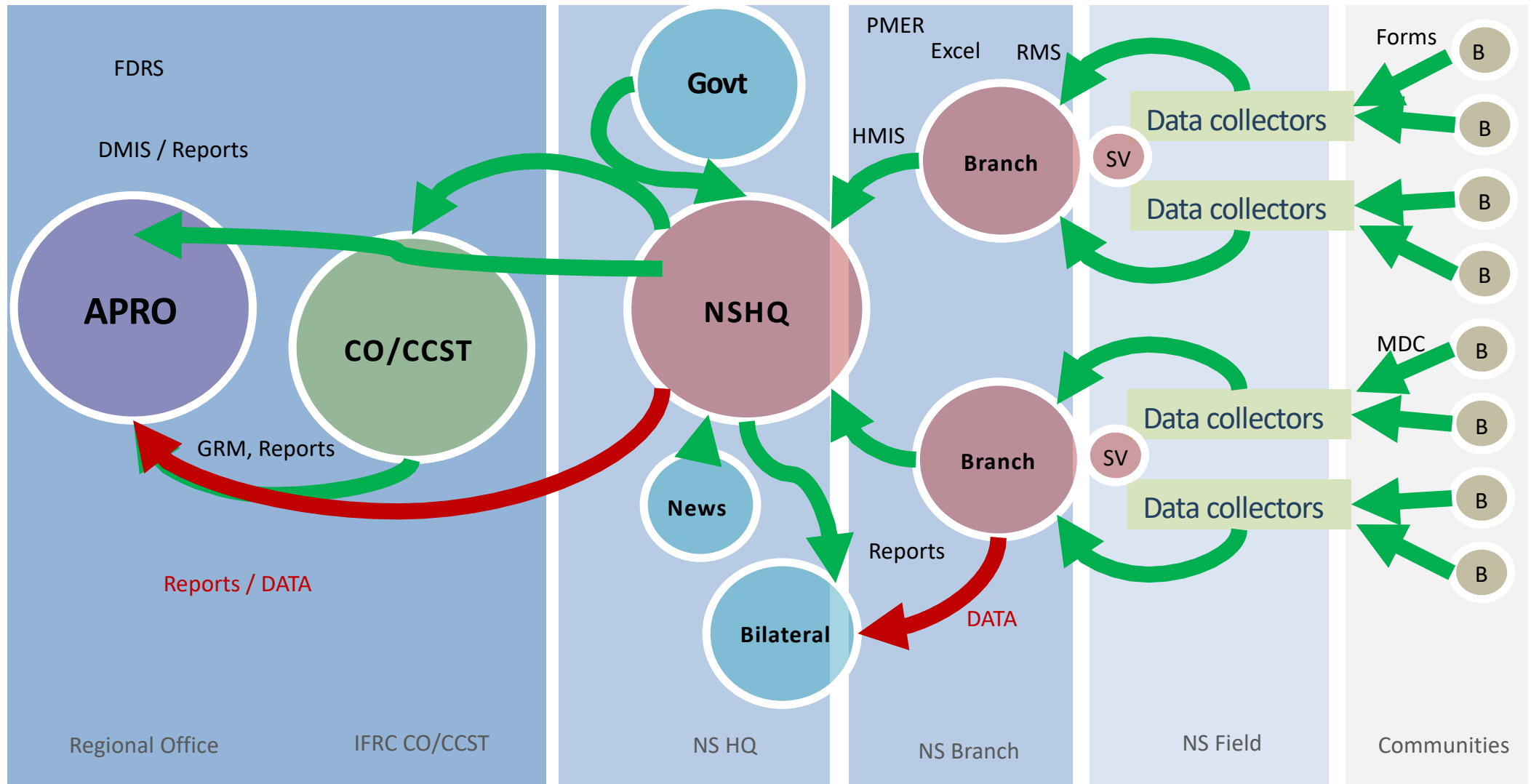
Example: Data Workflow

Data quality can be complex. This is especially true in a complex humanitarian organization.

The following examples show how multiple groups have different data needs and processes. For example, there are data workflows for reporting and data for delivering programming.

In reviewing, focus on the flow of information rather than the stakeholder acronyms.

Example: Data Collection Flow



Example: Data Collection Flow

National Society

IFRC

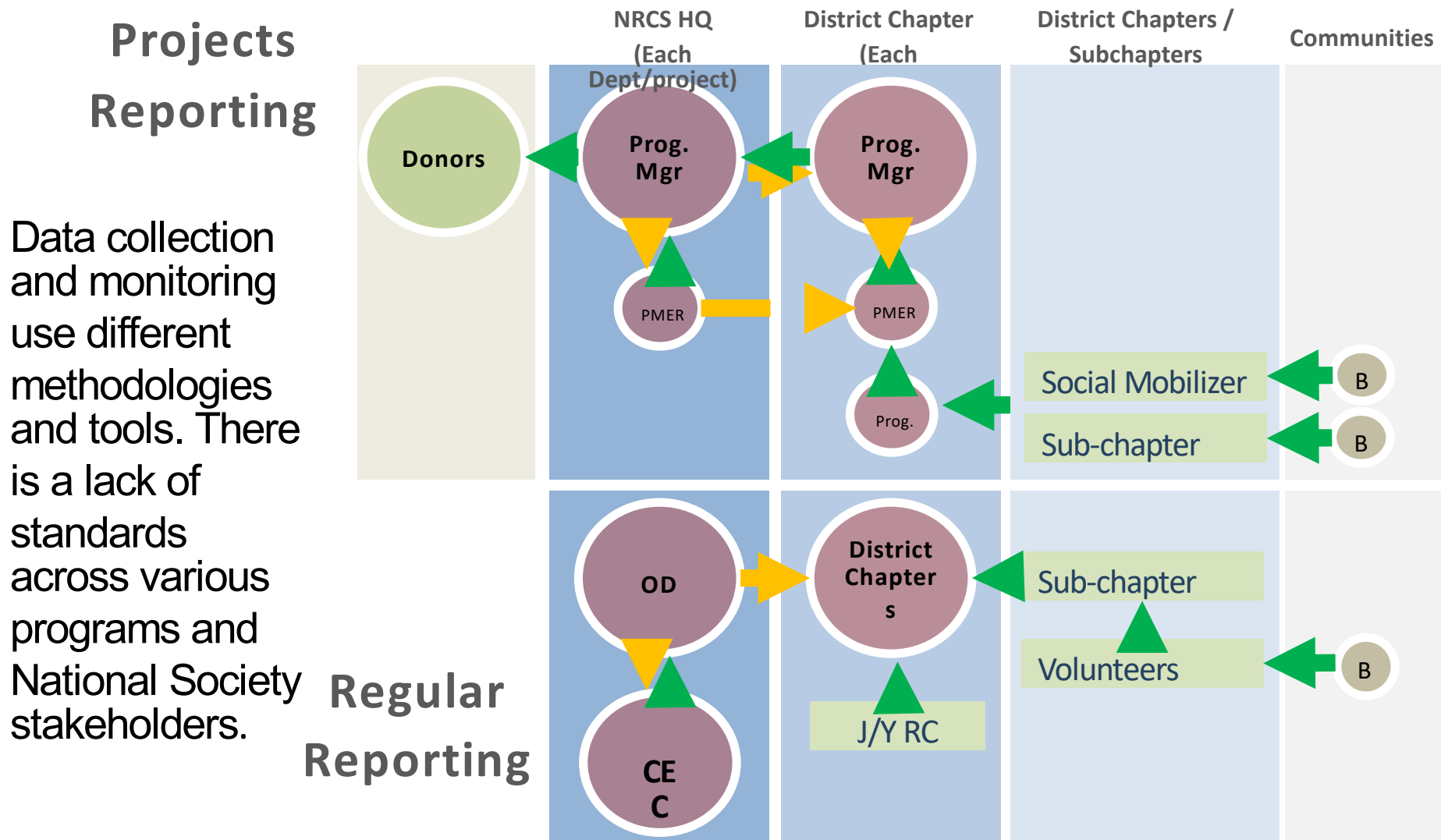
System / Tools	Indicators	Uti	SA DD	SADD Uti	Entry Freq.
RMS	Staff				
	Volunteers				
	Members				
	Warehouse				
	Assets				
	Assessment				
	Projects				
	Map				
	Events				
	Vulnerabilities				
	RDRT				
	Outreach recovery				
FDRS					
DMIS					
HMIS					
PMER					
Forms / Reports					

System / Tools	Indicators	Uti	SADD	SADD Uti	Entry Freq.
GRM / ITT	DRR				
	Health				
	WASH				
	Shelter				
	Livelihood				
	Migration				
	SFIs				
FDRS	7 Indicators				
	3 Documents				
Appeal Updates	Project updates				
Reports					
DMIS					
Logs					

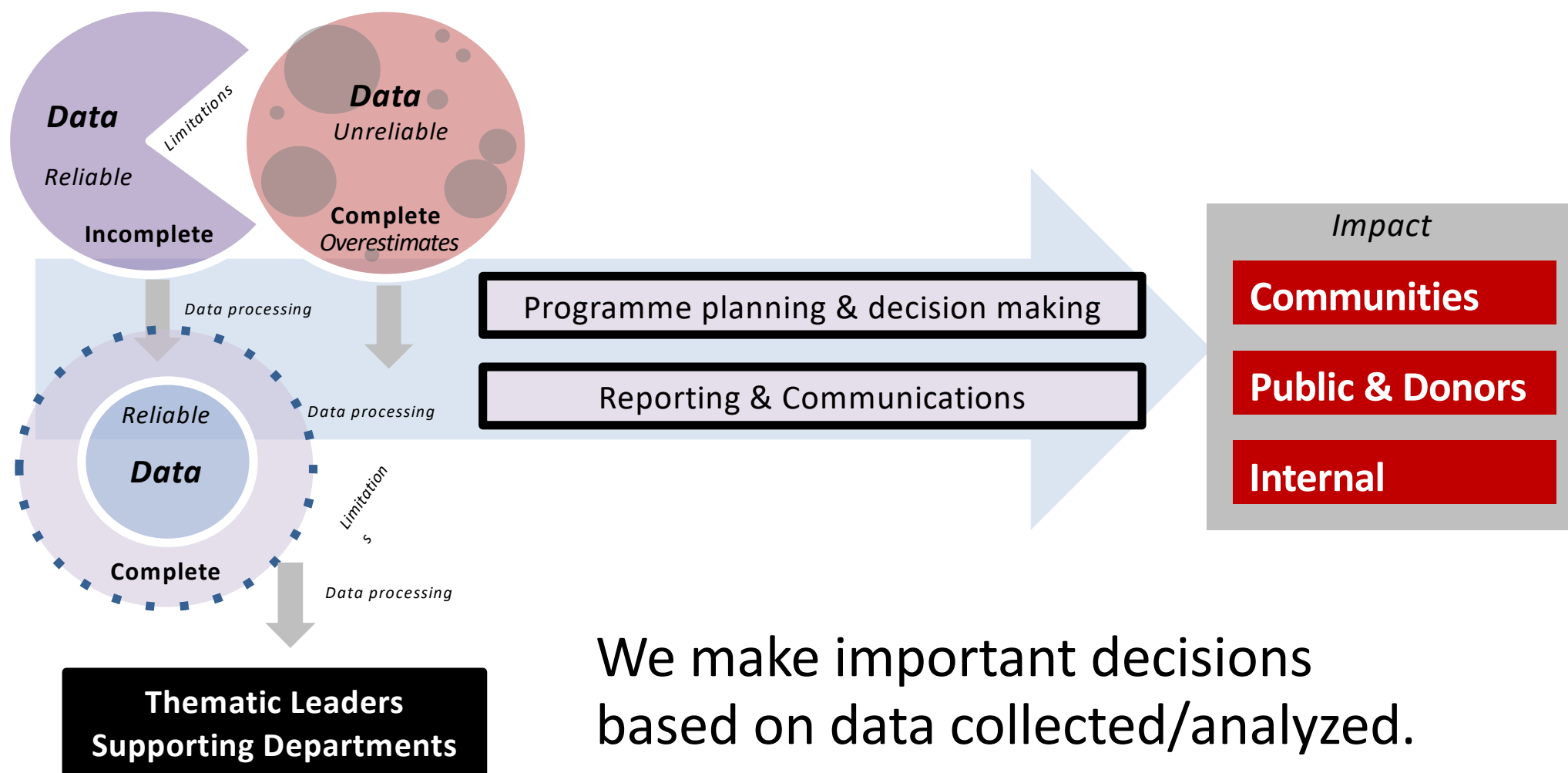


International Federation of Red Cross and Red Crescent Societies
 Fédération internationale des Sociétés de la Croix-Rouge et du Croissant-Rouge
 Federación Internacional de Sociedades de la Cruz Roja y de la Media Luna Roja
 الاتحاد الدولي لجمعيات الصليب الأحمر والهلال الأحمر

Example: Mapping Information Flows



Data to Decisions?



Questioning Quality

What are some of the data workflows in IFRC and your organization?

How can we be more consistent with metrics, measurement, and methodologies?

How can we better compare, analyze, summarize and report?

THANK YOU

Fadzli Saari

Amritpall Singh, Harminder
Singh

Heather Leson



International Federation of Red Cross and Red Crescent Societies
Fédération internationale des Sociétés de la Croix-Rouge et du Croissant-Rouge
Federación Internacional de Sociedades de la Cruz Roja y de la Media Luna Roja
الاتحاد الدولي لجمعيات الصليب الأحمر والهلال الأحمر

DATA PLAYBOOK: SLIDEDECK 23